

Duplex Enabler

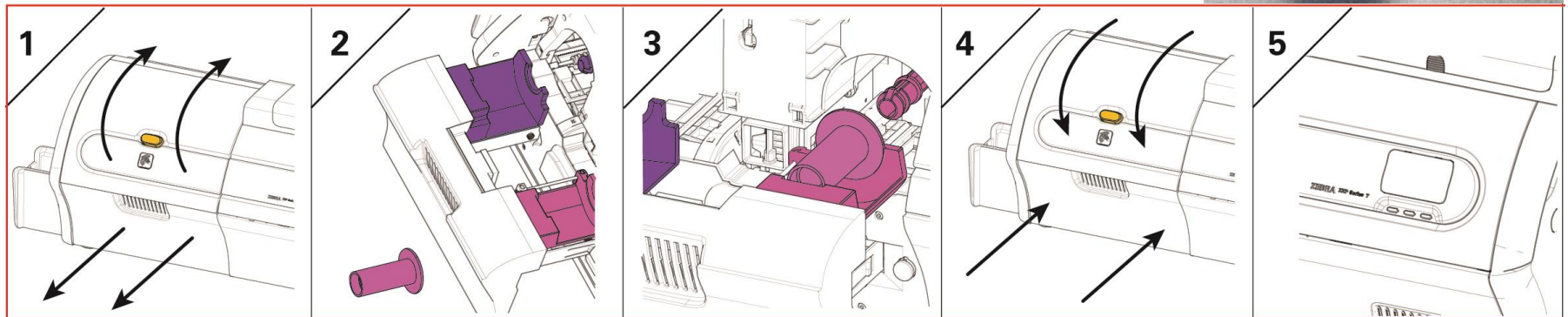


■ P1037750-099

KIT,UPGRADE DUPLEX ENABLING

■ Converts single side to dual side in the field

- Can only be used once
- If it is upgraded in the field the customer should put a label on it to indicate it has been converted to dual sided



Duplex Enabler (cont)



- Picture below represents labels that will show unit has been converted
 - One label will be placed on the box
 - One label will be placed on the backside of the printer

