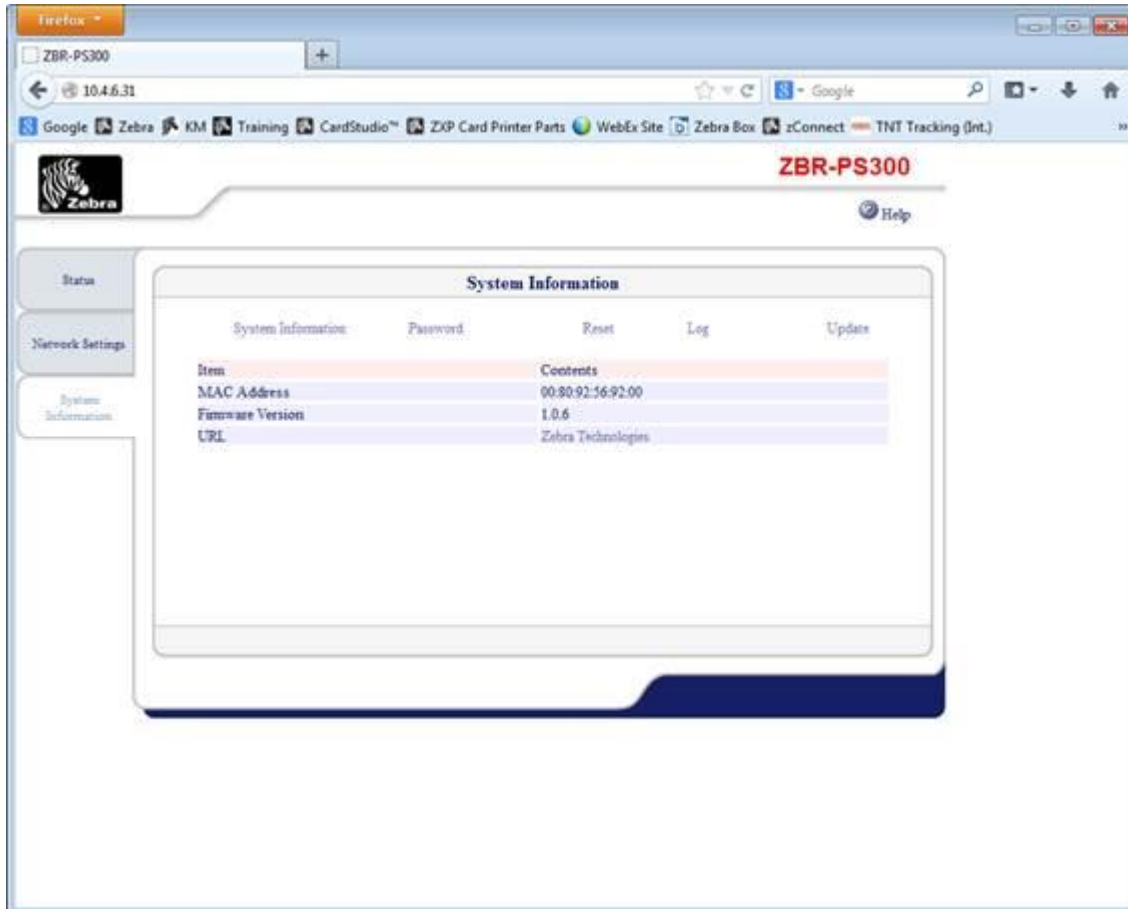


Print server Reset ZXPS1 & 3

Standard printers: (Firmware V2.03)

Hold the reset button for 5-10 second when you power on the printer.

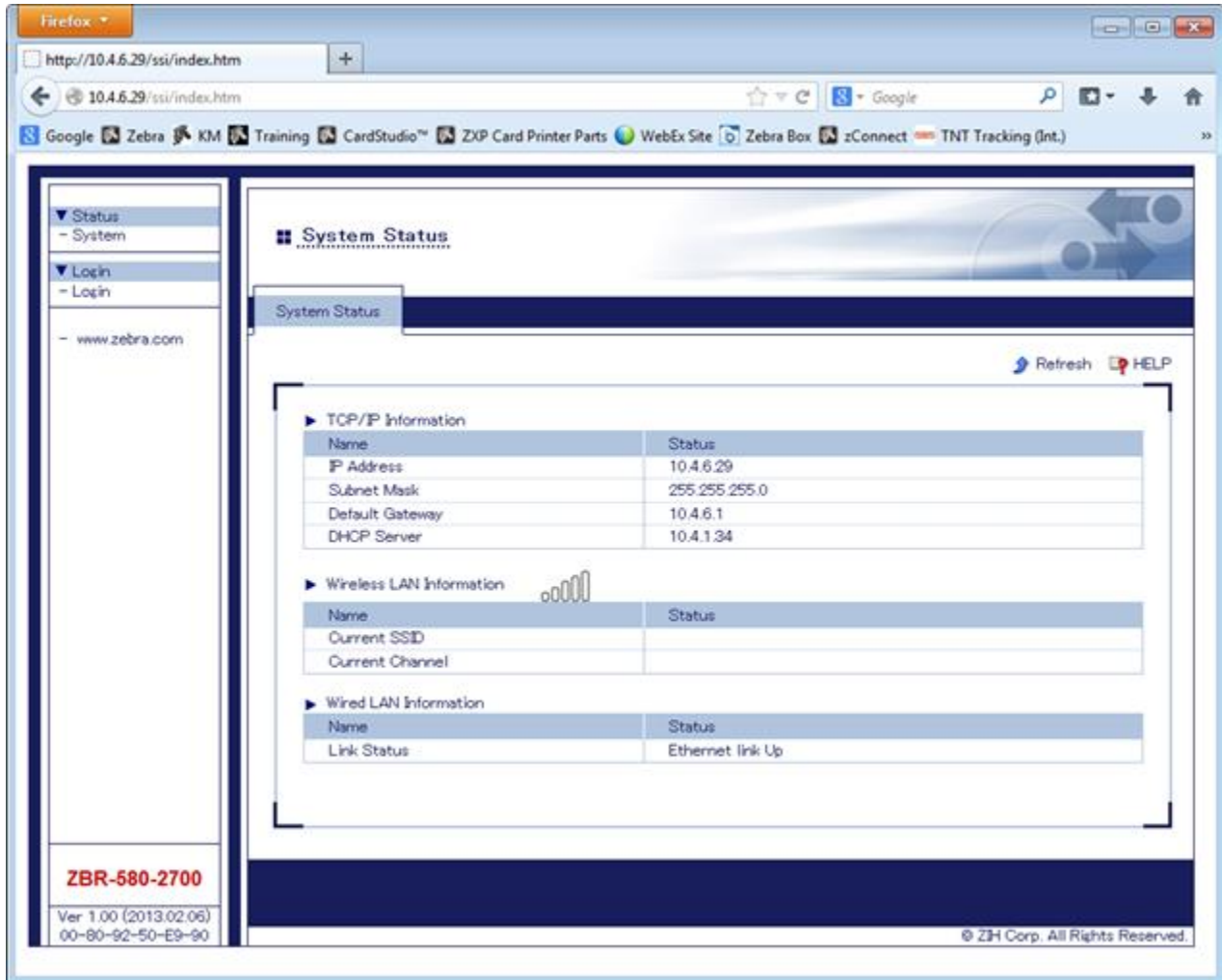
A restart of the printer with the on off switch is required to complete the reset.



Decathlon printers: (Firmware V2.05)

Hold the reset button for 5 second when the printer is powered on.

After release of the button the printer will reboot.



The screenshot shows a Firefox browser window with the address bar displaying `http://10.4.6.29/ssi/index.htm`. The page content is titled "System Status" and includes a navigation menu on the left with options for Status, Login, and www.zebra.com. The main content area displays network information in three sections:

- TCP/IP Information**

Name	Status
IP Address	10.4.6.29
Subnet Mask	255.255.255.0
Default Gateway	10.4.6.1
DHCP Server	10.4.1.34
- Wireless LAN Information**

Name	Status
Current SSID	
Current Channel	
- Wired LAN Information**

Name	Status
Link Status	Ethernet link Up

At the bottom left of the page, the phone number **ZBR-580-2700** is displayed, along with version information: Ver 1.00 (2013.02.06) and 00-80-92-50-E9-90. The bottom right corner contains the copyright notice: © ZH Corp. All Rights Reserved.

Reset button print server:

