

Network Setup Wizard

Use the Network Setup Wizard for initial setup of your Zebra printer with a ZebraNet Wireless Print Server. This setup requires connecting the printer to the local PC. Depending on what interface option you have, you can use either a serial, parallel, or USB connection.

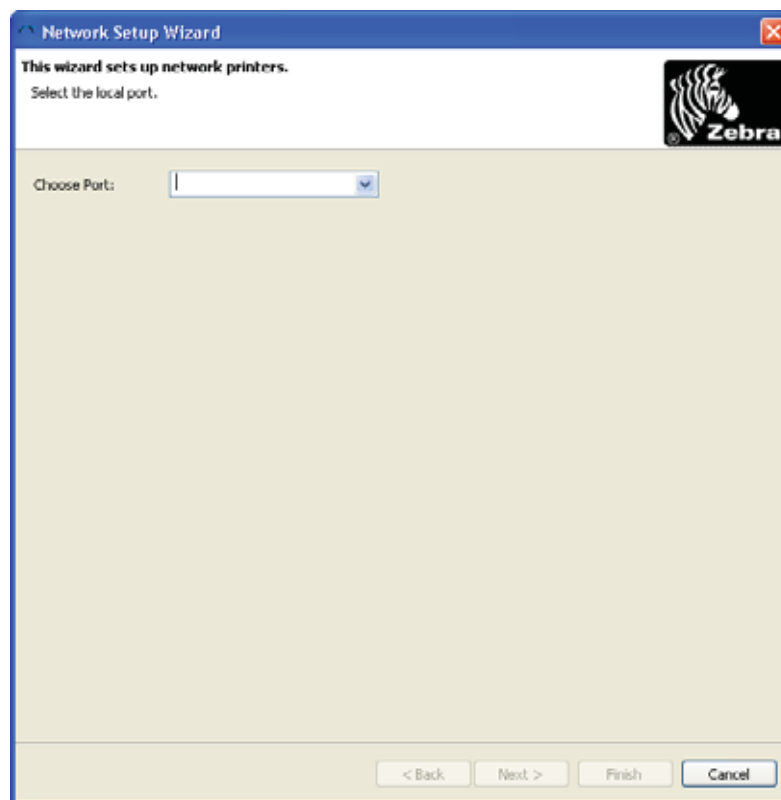
To select a network:

1. From the menu bar, select Tools > Network Setup Wizard.

This *Network Setup Wizard* dialog box opens.



Important • The Choose Port drop-down provides the option to select a port, Local Printer, or to save the settings that will be sent to the printer to a file.



2. Select the port you want, and click Next>.

3. Select the Connectivity Option based on Table 2.

This *Network Setup Wizard* dialog box opens.

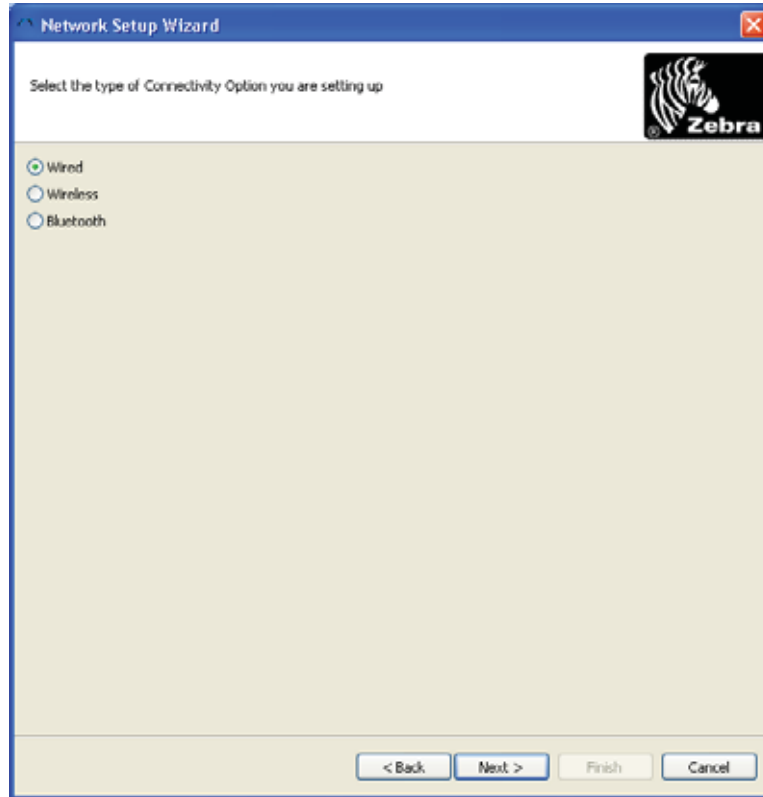


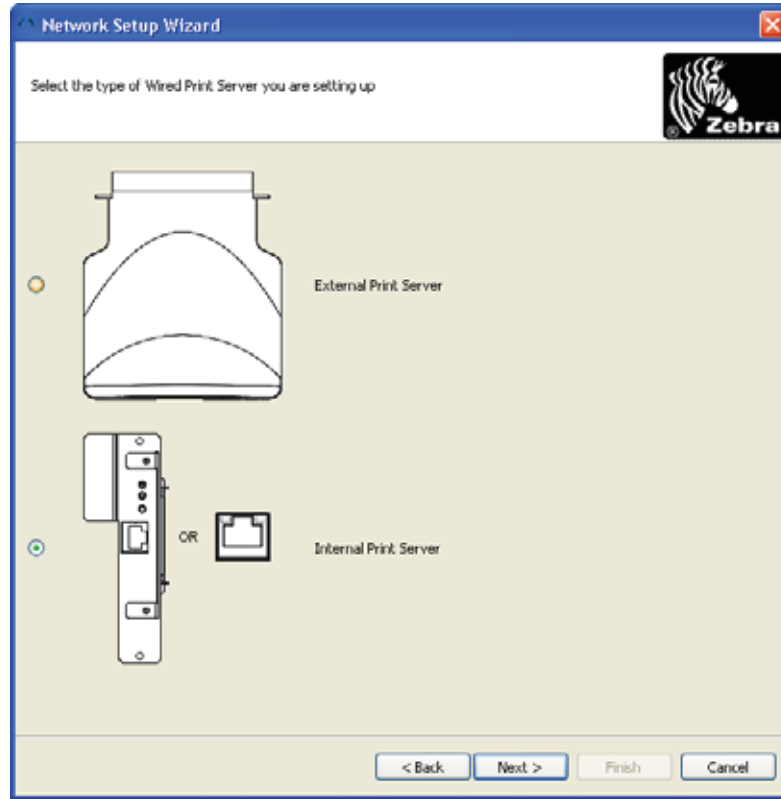
Table 2 • Connectivity Options

If you choose ...	Then go to ...
Wired	<i>Wired</i> on page 131.
Wireless	<i>Wireless</i> on page 134.
Bluetooth	<i>Bluetooth</i> on page 137.

Wired

1. If you selected Wired, click Next>.

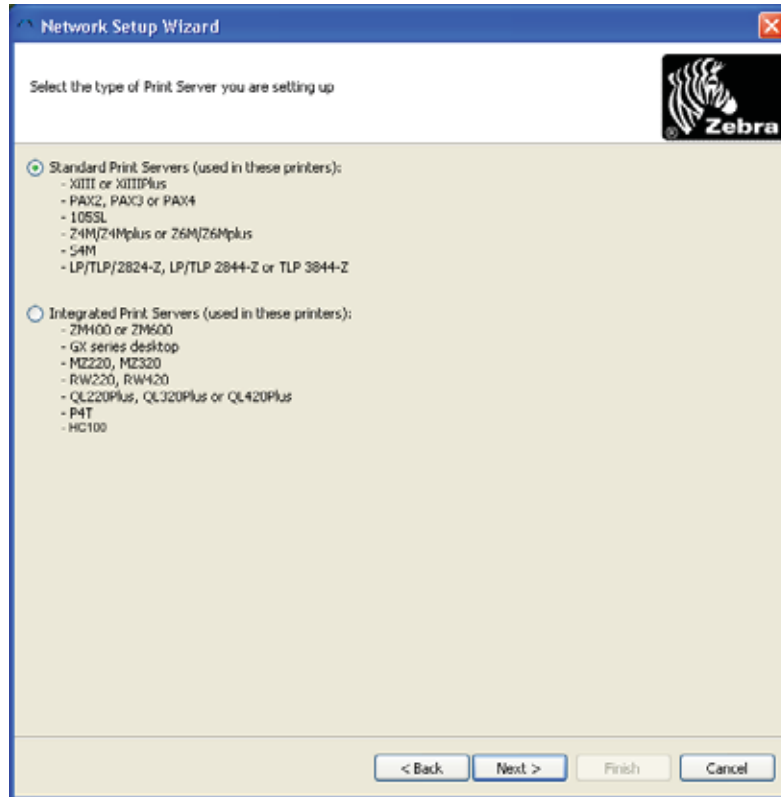
This *Network Setup Wizard* dialog box opens.



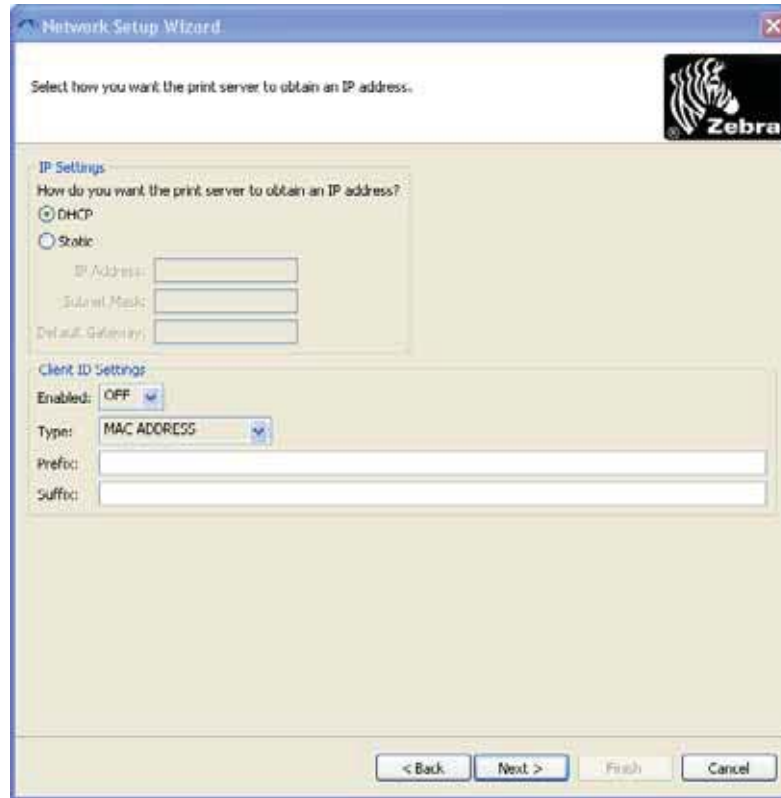
2. From this table, select your print server and proceed to the noted step:

If you selected the...	Then...
External Print Server	Skip to step 3 .
Internal Print Server	Continue as follows.

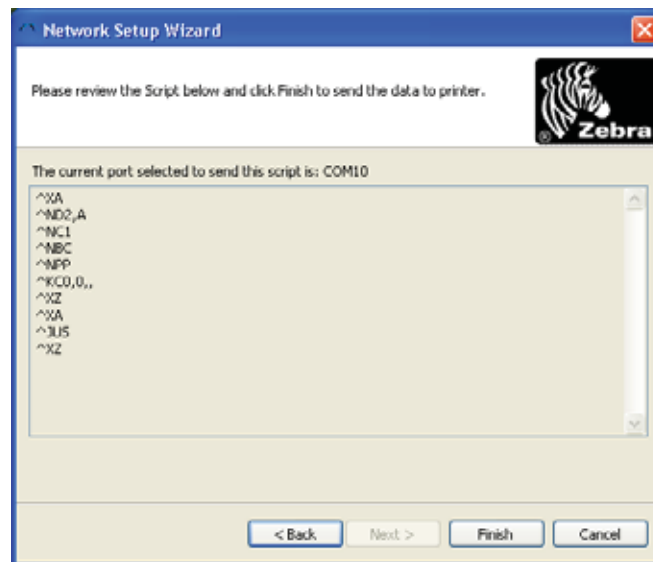
If you selected Internal Print Server, this *Network Setup Wizard* dialog box opens.



3. Select the applicable printer server for your printer, click Next>.
 This *Network Setup Wizard* dialog box opens.



4. Make the applicable selections, click Next>.
 This *Network Setup Wizard* dialog box opens.

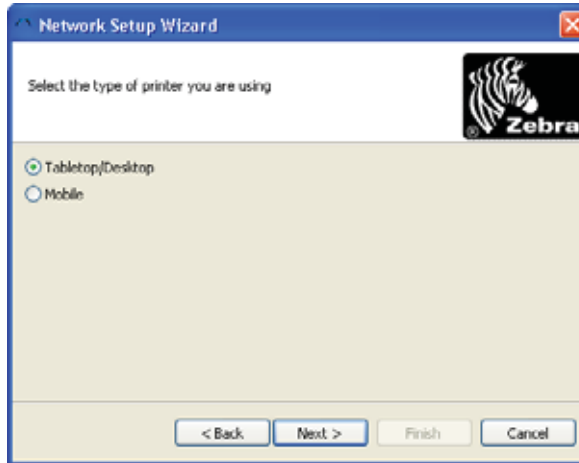


5. Select Finish.

Wireless

1. If you selected Wireless, click Next>.

This *Network Setup Wizard* dialog box opens.



2. Select the type of printer, click Next>.

This *Network Setup Wizard* dialog box opens.



3. Make the applicable selections, click Next>.
 This *Network Setup Wizard* dialog box opens.

Network Setup Wizard

Please enter your wireless settings below. All security options may not be available in your printer. Please refer to the Wireless Print Server and Wireless Plus Print Server User Guide for supported security protocols.

General Security

ESSID: 125

Security Mode: None

Security Username:

Security Password:

WEP Options

Authentication Type: Open

WEP Index: 1

Encr. Key Storage: Hex String

When using hex WEP keys, do not use a leading 0x

WEP Key 1:

WEP Key 2:

WEP Key 3:

WEP Key 4:

Kerberos Settings

Kerberos User:

Kerberos Password:

Kerberos Realm:

Kerberos KDC:

WPA

PSK Type: Hex String

PSK Name:

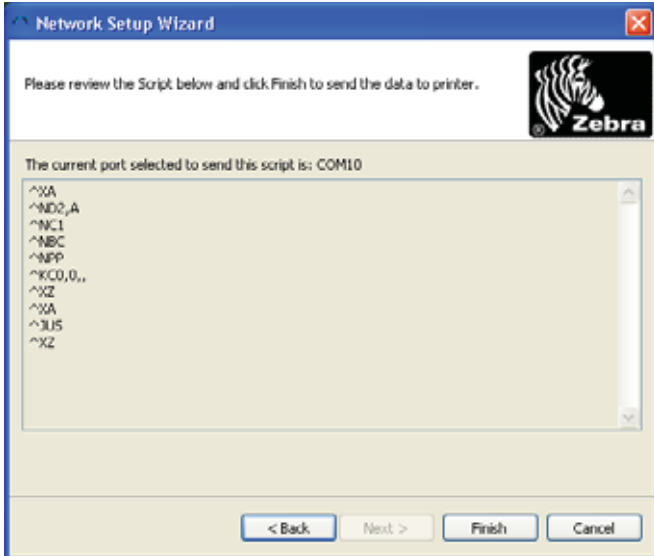

EAP

Optional Private Key:

Certificates... Advanced Options Restore Defaults

< Back Next > Finish Cancel

4. Make the applicable selections, click Next>.
This table shows what dialog box opens.

If you selected ...	Then...
Tabletop/Desktop	<p>This <i>Network Setup Wizard</i> dialog box opens.</p> 
Mobile	<p>This <i>Network Setup Wizard</i> dialog box opens.</p> 

5. Select Finish.