

ZebraDesigner Driver Passthrough

This feature allows you to send the printer native language (ZPL, EPL, or CPCL) directly through the driver to your Zebra printer. ZebraDesigner Drive version 2.6.23 or above is required.

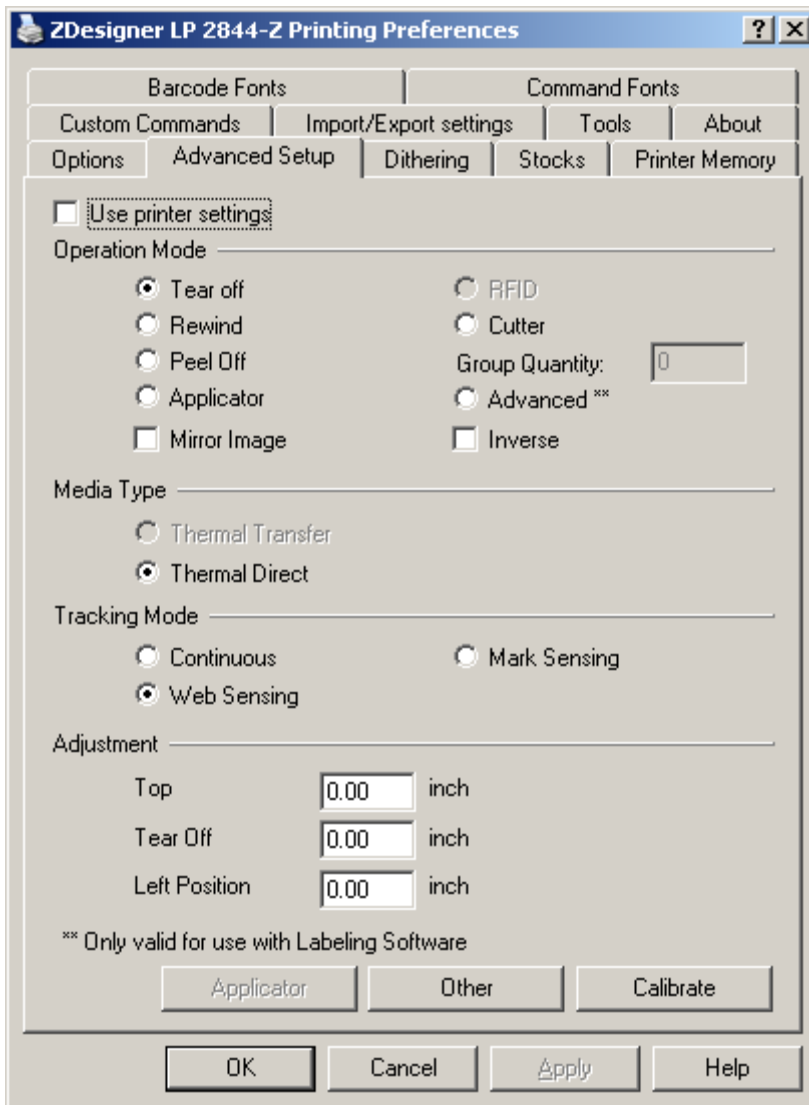
Here are instructions to locate, change, enable or disable this feature with the ZebraDesigner driver. Click - **Start, Settings,**

XP, 2000, 2003 – Printers and Faxes

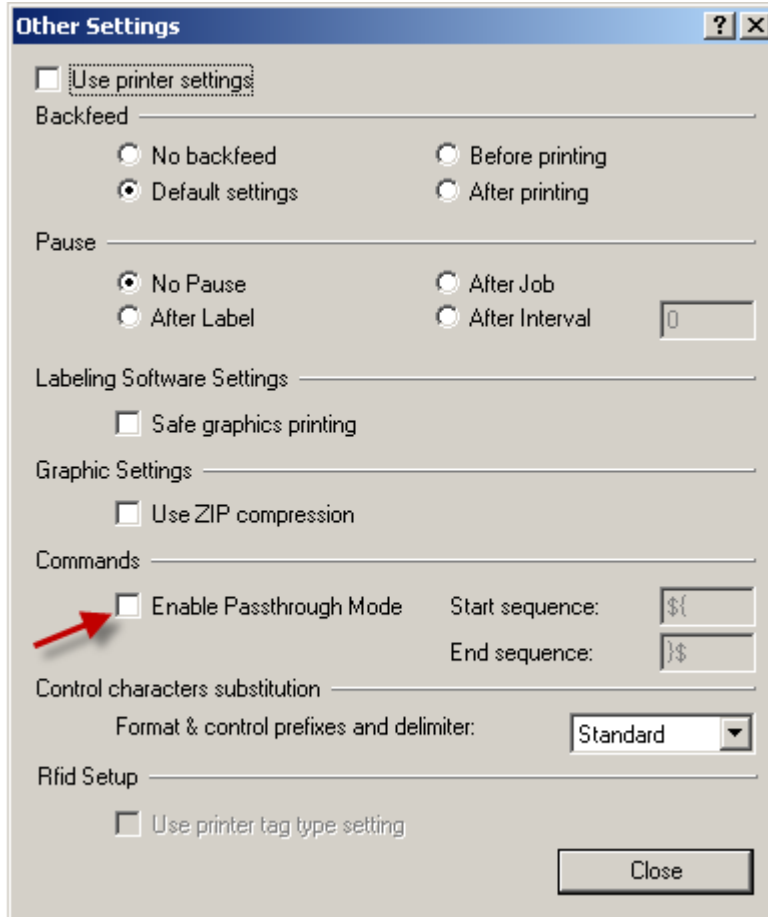
Vista, 2008 – Printers

Windows 7 – Devices and Printers

Right click on driver and select - Printing Preferences, click the Advanced Setup Tab, then for ZPL printers click the Other option...



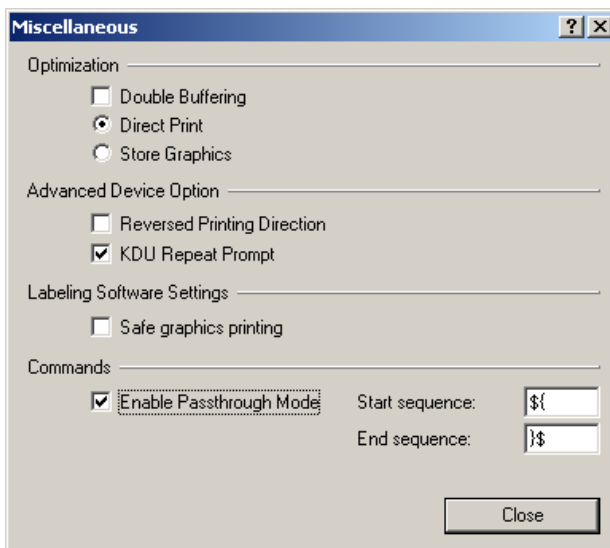
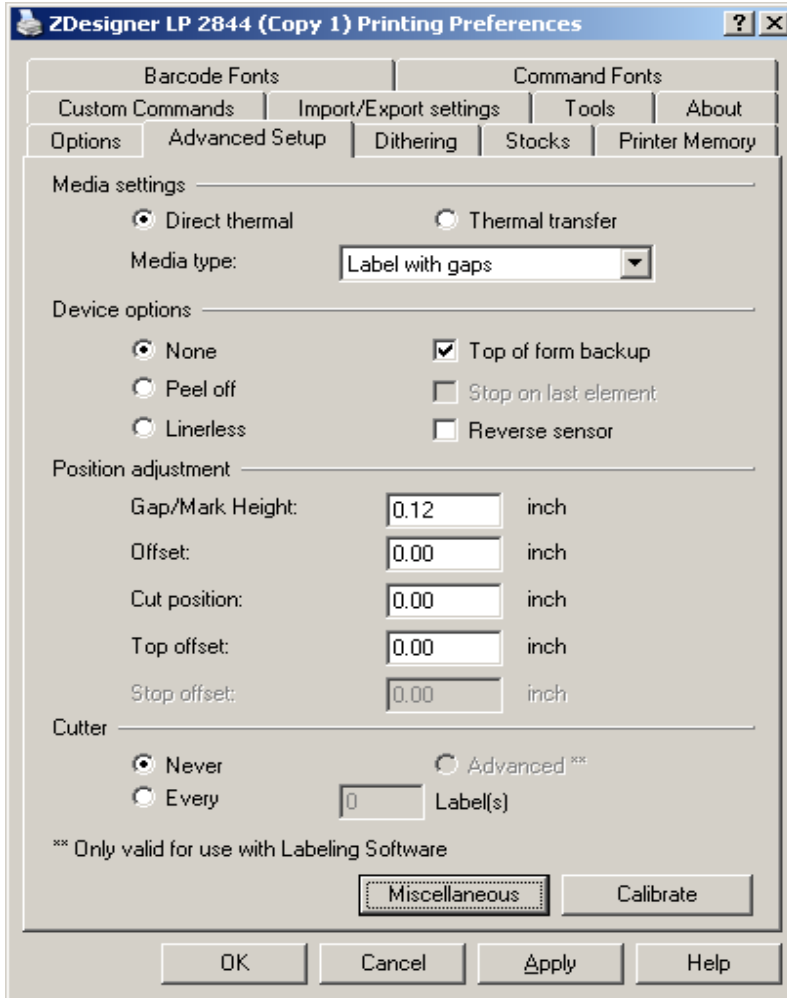
The Other settings screen appears with these options for a ZPL printer.



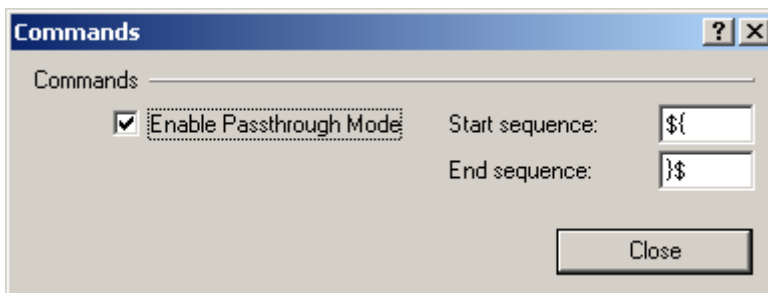
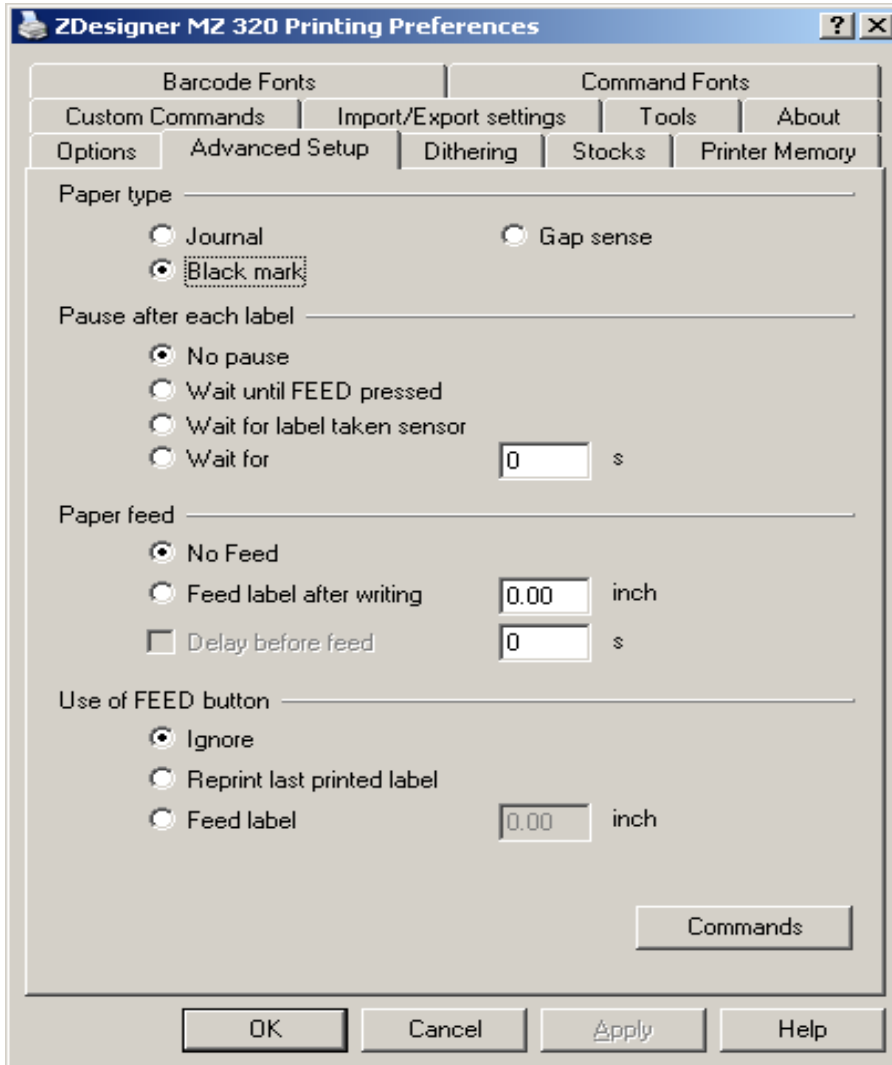
In each printer language the **Commands** Enable Passthrough Mode check box will enable the feature. Here you also have the option to change the Start/End sequence to something more suited to your application if the default characters cause conflicts for you. However, we do recommend staying with the defaults if at all possible since the feature was tested using those. Then click Close.

In all instances Enable Passthrough Mode is unchecked by default and must be enabled. Each printer language has a different option preceding the **Commands** option.

For an EPL printer, LP2844 for example, click the Miscellaneous option



For a CPCL printer, MZ320 for example, click the Command option.



Passthrough Macros

The Passthrough Macro allows you to send commands (native language commands - ZPL, EPL, CPL) to the printer without any interpretation or alteration by the driver. The Start and End sequence characters are used to define the boundaries of the data that you want sent to the printer. This can be useful if you need to send a non-printing command to the printer during the middle of a label within a bar code, for example.

Passthrough label design steps

1. Set the ZebraDesigner driver as your default printer driver.
2. Check that the Passthrough options you want to use have been enabled. Steps to do this are above.
3. Within your application, setup the correct Page Setup parameters for the label.
4. Select a type font from the applications font dropdown list you require.
5. On the label, enter the Starting sequence characters (\${ or whatever you created in the driver) and enter your data/character string. Let the application wrap the text as needed and when finished, enter the End sequence characters (}\$ or whatever you created in the driver).

Note – to print bar codes with the ZebraDesigner driver's passthrough method the full ZPL, EPL, or CPCL code for the bar code must be included.

Each of the examples below will print text, a Code 39 bar code, and a PDF417 bar code. If you are not familiar with each printer language Programming Guides are available from www.zebra.com with additional examples.

ZPL Example:

```
${  
^MMT  
^PW609  
^LL0406  
^LS0  
^BY2,3,71^FT39,176^B3N,N,,Y,N  
^FD123456L^FS  
^FT39,65^A0N,28,28^FH\^FDText^FS  
^BY1,4^FT39,296^B7N,4,0,,,N  
^FH\^FDZebra Technologies Corporation^FS  
^PQ1,0,1,Y  
}$
```

Both the EPL and CPCL languages require the Start and End Sequence (`{ ... }` by default) to begin and end every line of code. The last line of code must also be trailed by CR-LF (press the Enter key at least 2 or 3 times)

EPL Example:

```
{I8,A,001}$  
  
{Q406,024}$  
{q831}$  
{rN}$  
{S4}$  
{D7}$  
{ZT}$  
{JF}$  
{OD}$  
{R212,0}$  
{f100}$  
{N}$  
{B39,105,0,3,2,6,71,B,"123456L"}$  
{A39,37,0,4,1,1,N,"Text"}$  
{b39,216,P,406,406,s0,x2,y4,r90,l1,f0,o0,"Zebra Technologies  
Corporation"}$  
{P1}$
```

CPCL Example:

```
{! 0 200 200 406 1}$  
{PW 406}$  
{TONE 0}$  
{SPEED 3}$  
{ON-FEED IGNORE}$  
{NO-PACE}$  
{JOURNAL}$  
{BT 7 0 0}$  
{B 39 1 30 71 39 105 123456L}$  
{T 4 0 39 37 Text}$  
{B PDF-417 39 216 XD 3 YD 4 C 1 S 0}$  
{Zebra Technologies Corporation}$  
{ENDPDF}$  
{PRINT}$
```

Note – The EPL and CPCL examples above were printed successfully through Notepad. It was necessary to clear margin values under Page Setup in order to print.