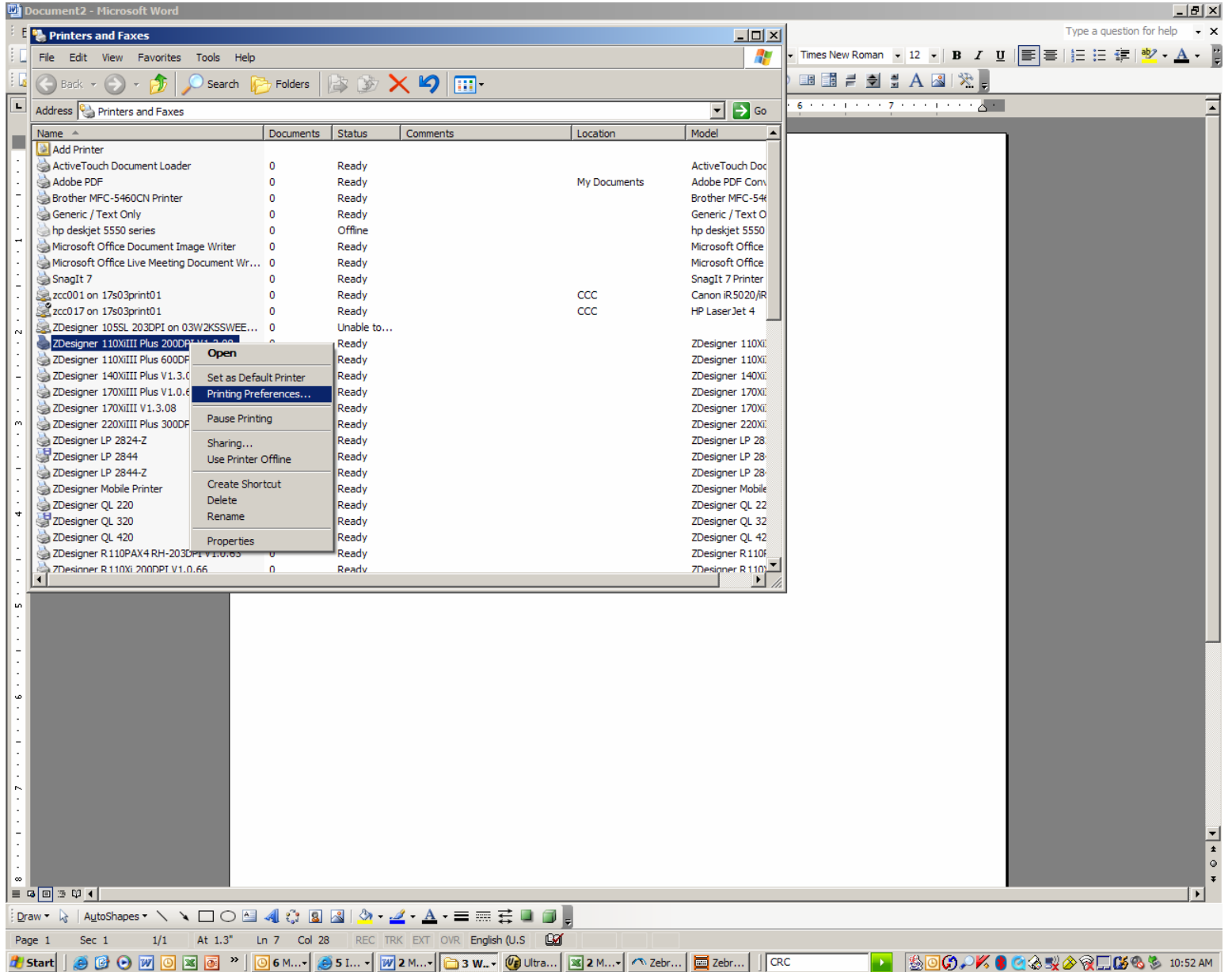


# ZebraDesigner Driver - Creating a new Stock type

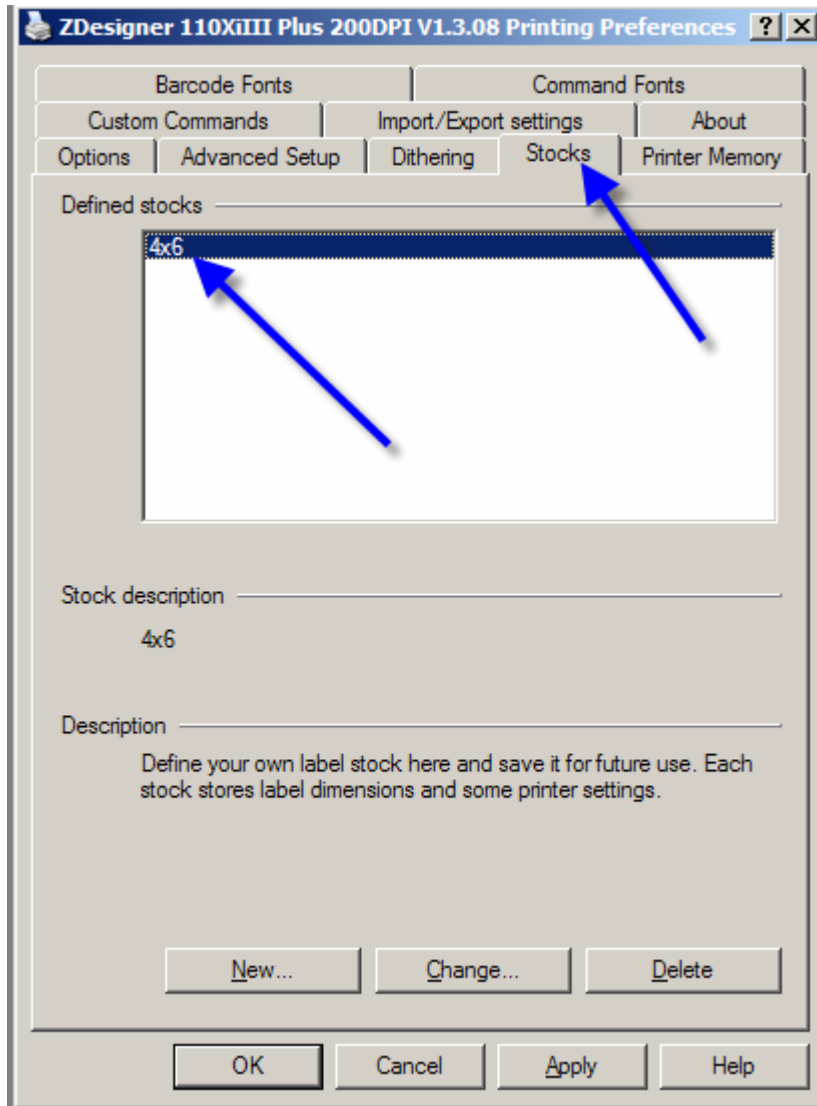
With Win XP select Start/Settings/Printers and Faxes

Right click the printer driver

Select Printing Preferences

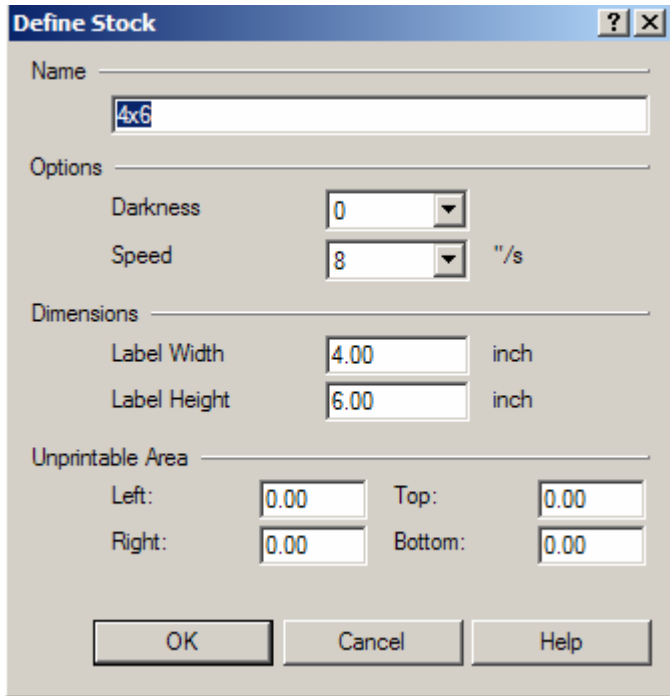


Next select the Stocks tab and enter a description to create a Defined stock



You can select Change... to edit an existing stock or New... to define a new stock.

The following screen then appears and allows you to lock in place the available settings.



The image shows a dialog box titled "Define Stock" with a blue header bar containing a question mark icon and a close button (X). The dialog is organized into several sections:

- Name:** A text input field containing "4x6".
- Options:** Two dropdown menus. The first is labeled "Darkness" and is set to "0". The second is labeled "Speed" and is set to "8", with a unit of "/s" to its right.
- Dimensions:** Two text input fields. "Label Width" is set to "4.00" with the unit "inch" to its right. "Label Height" is set to "6.00" with the unit "inch" to its right.
- Unprintable Area:** Four text input fields arranged in a 2x2 grid. "Left:" and "Right:" are both set to "0.00". "Top:" and "Bottom:" are both set to "0.00".

At the bottom of the dialog, there are three buttons: "OK", "Cancel", and "Help".

Click OK to complete and save settings. Then close out of the driver.

Right click the driver and this time select Properties/Printing Preferences. A list of each Defined Stock is available in the Stock drop down. Select the desired Stock and click Apply then OK. When you close the driver and select Properties/Printing Preferences again, the selected Stock will remain without diverting back to User defined.

