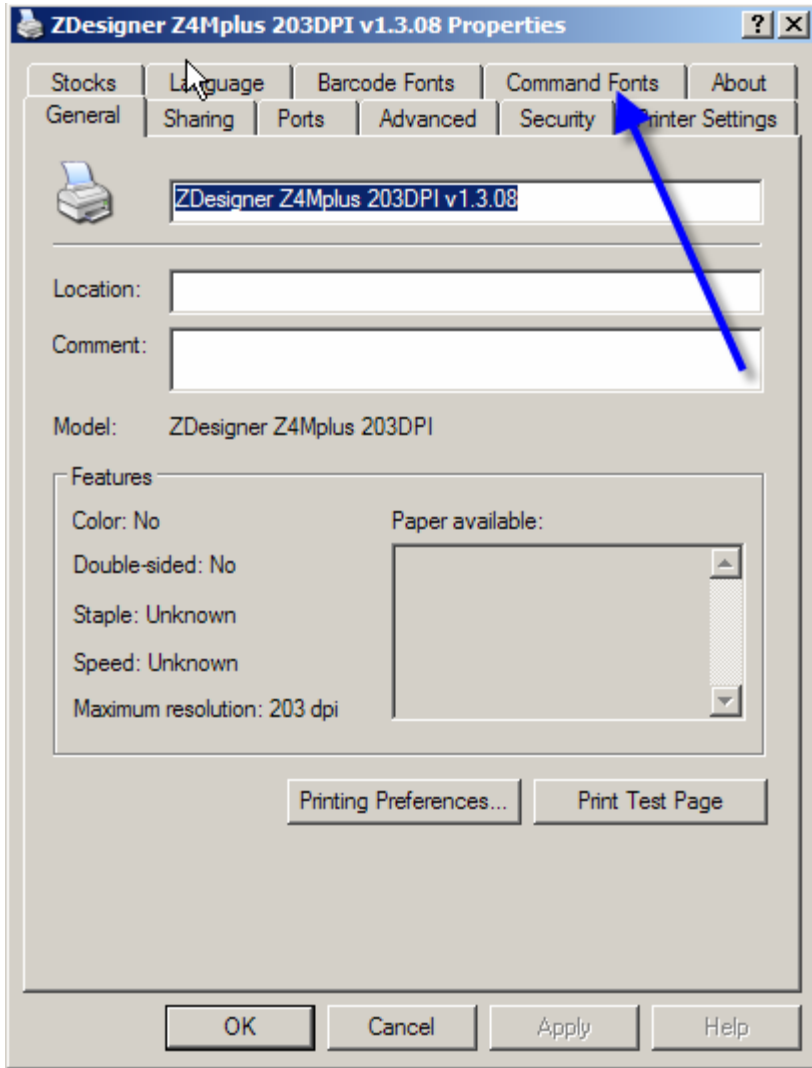


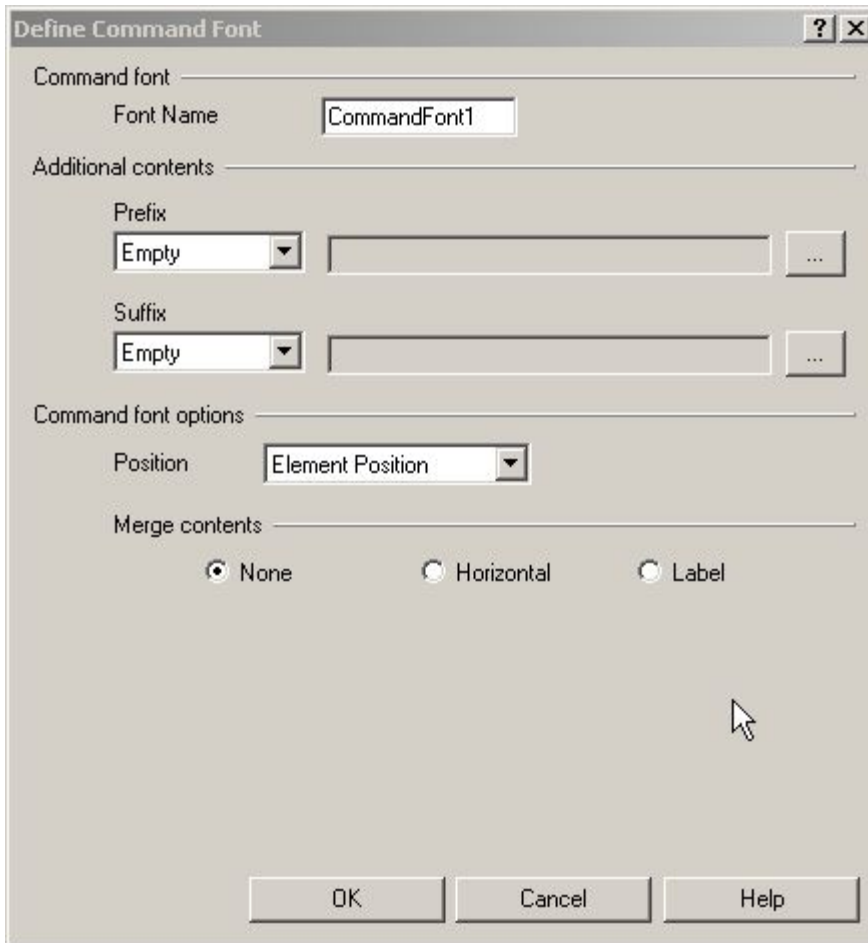
ZebraDesigner Driver Command Font Pass-through

The following instructions can be used to set up the Command Font option of the ZebraDesigner Driver. This option allows you to send printer code directly to a Zebra printer from a document or ZebraDesigner label file.

After Start/Settings/Printers, right click a Zebra printer and select Properties. Then select the Command Fonts tab. . .

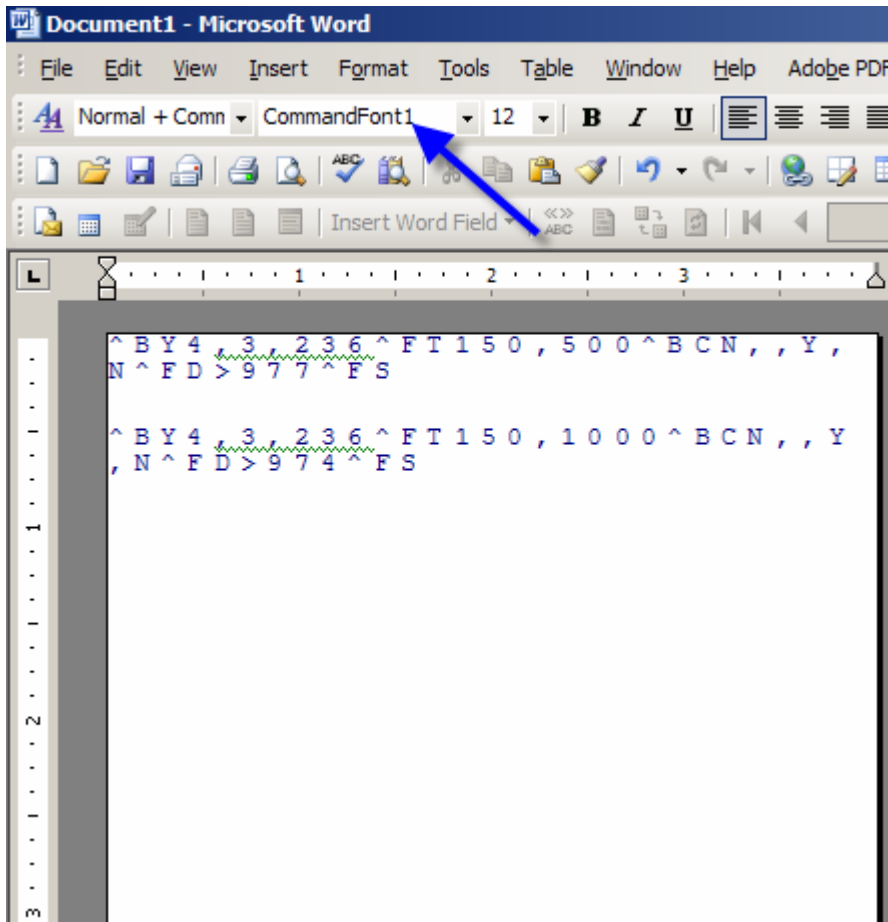


Click New... to add a Command Font



The Font Name entered will become an available font within other programs such as Microsoft Word or ZebraDesigner software.





Any text that is included on a label or within a doc file with the font name that you defined will be passed to the printer as a printer command. For any label you need to print by sending code directly to the printer, just copy the CPCL, EPL, or ZPL anywhere on a label or doc file and adjust the code to print where you want and the size you want to print. For more information on printer code based on the Zebra printer model, programming guides are available for download from www.zebra.com.

The following sample code could be used to print Code 128 barcodes with a ZPL printer that when scanned will perform a Carriage Return & Line Feed:

```
^BY4,3,236^FT150,500^BCN,,Y,N^FD>977^FS
```

```
^BY4,3,236^FT150,1000^BCN,,Y,N^FD>974^FS
```