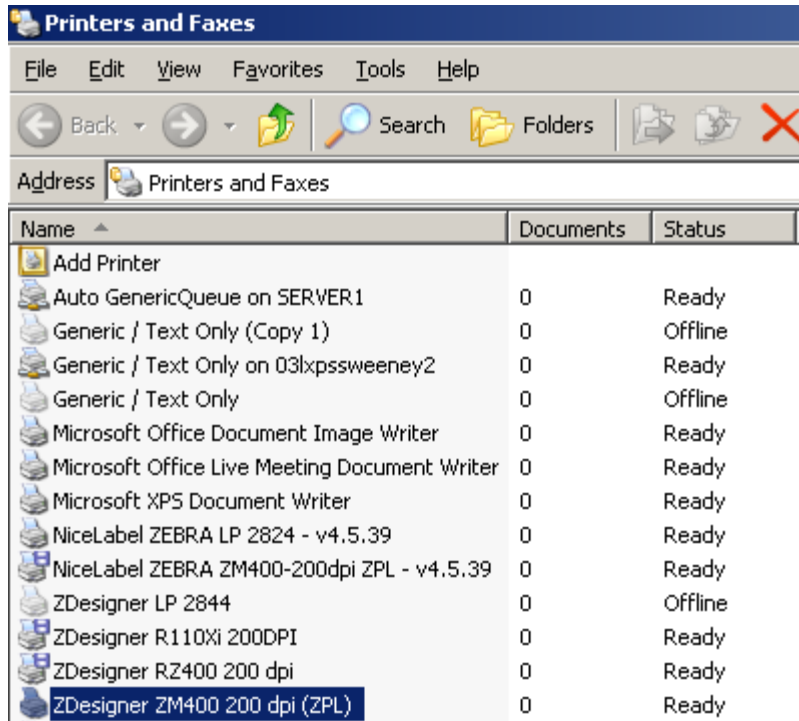


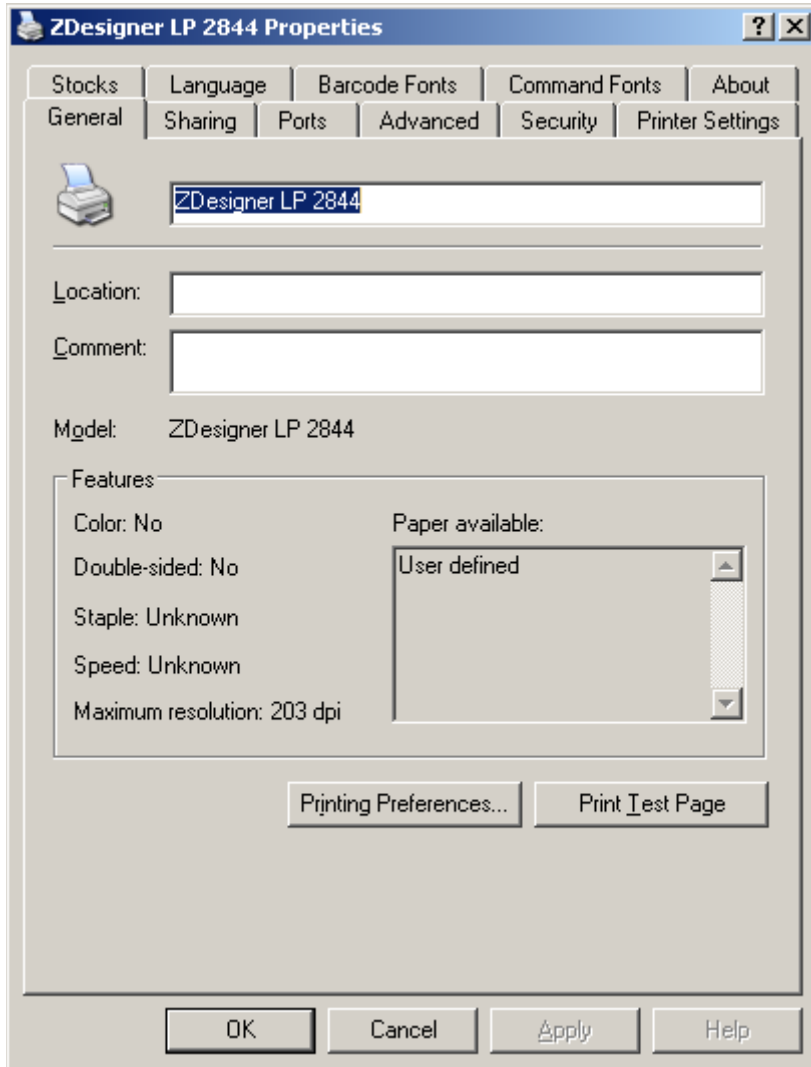
Page Size Setup with ZebraDesigner Driver v2.6.23 and above

Unchecked by default, the “Always use drivers settings” is new to the 2.6.23 driver and has been key to resolving multiple instances of page size issue within applications.

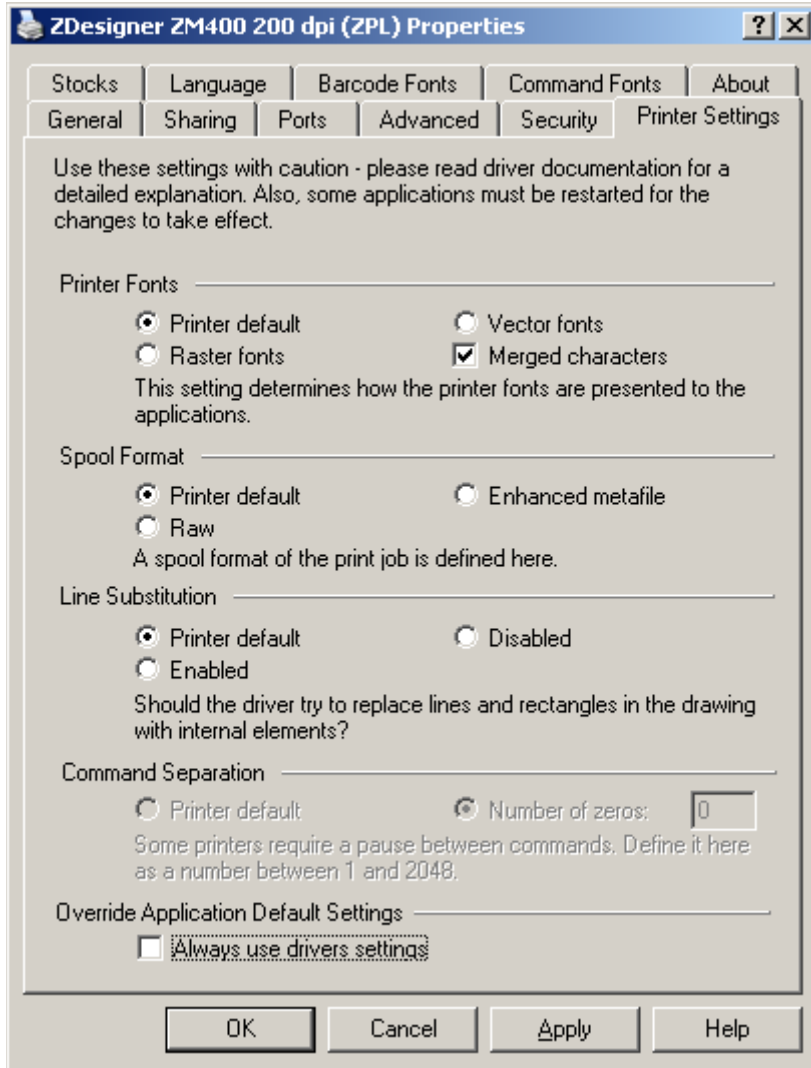
To access Printer Settings you first need to point to the driver within your operating system (Printer and Faxes in Windows XP for example) then Right Click the ZDesigner driver.



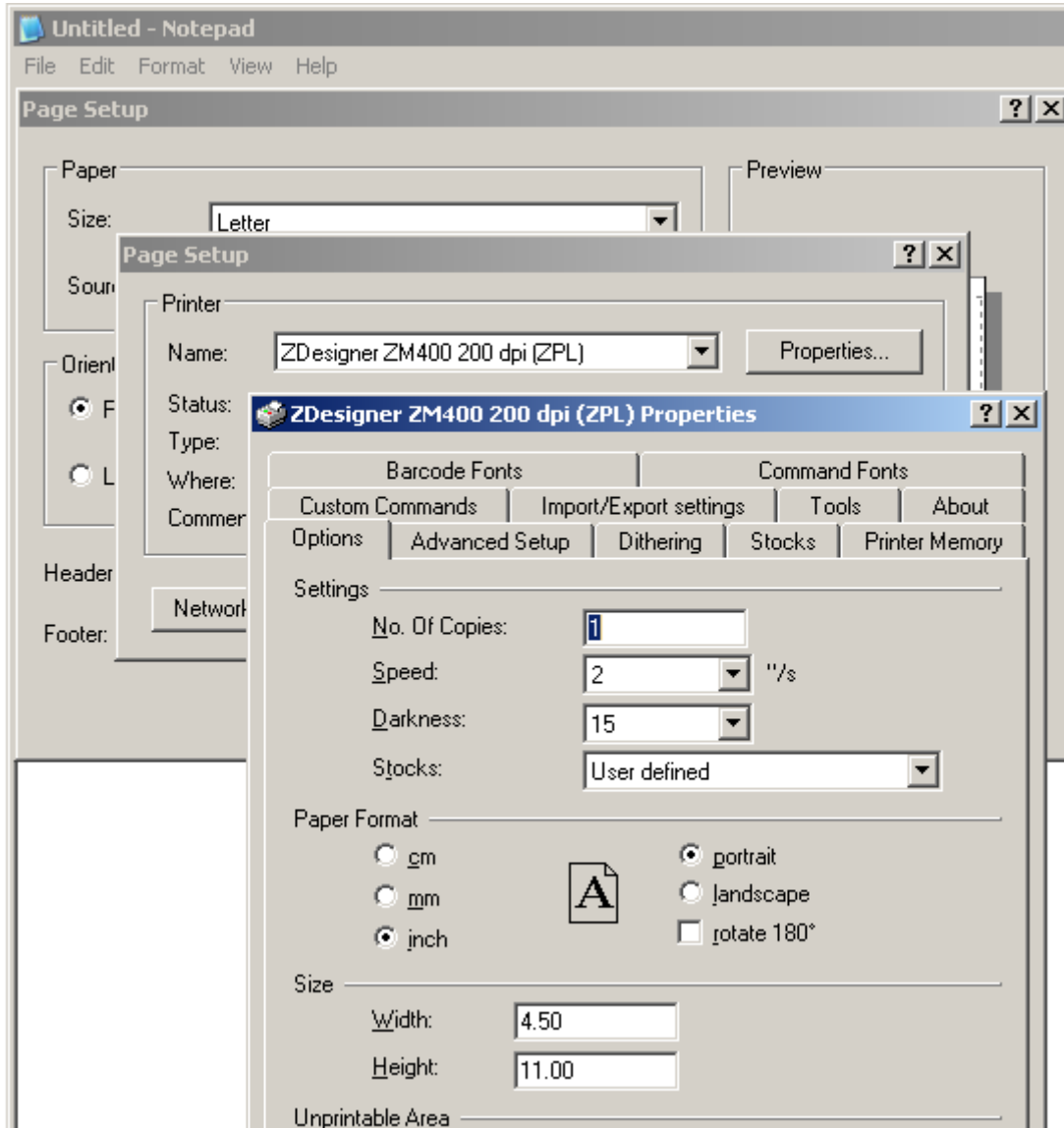
Select Properties and the following screen appears with a tab for Printer Settings.



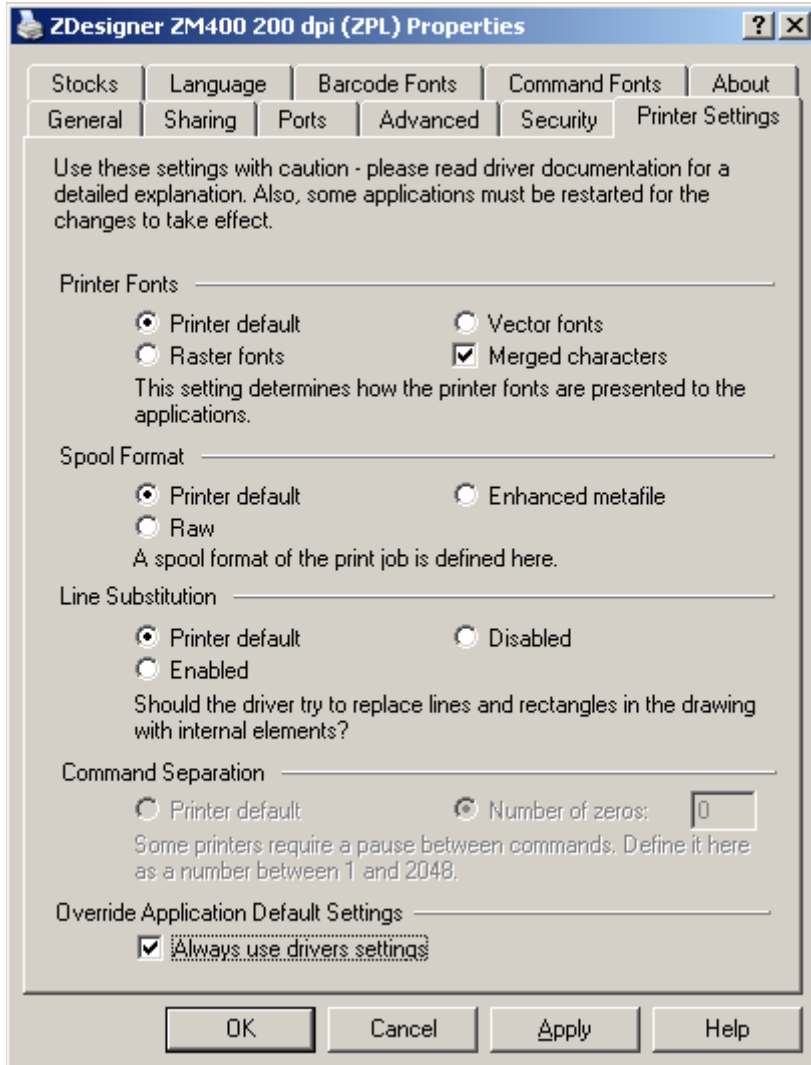
After clicking Printer Settings, this window will appear. With the check box available at the bottom to “Always use driver settings.”



These are page size results from Notepad when the “Always use drivers settings” was unchecked:



Accessed Printer Settings and checked the option for “Always use driver settings.”



Page size results from Notepad when the “Always use drivers settings” is checked:

