

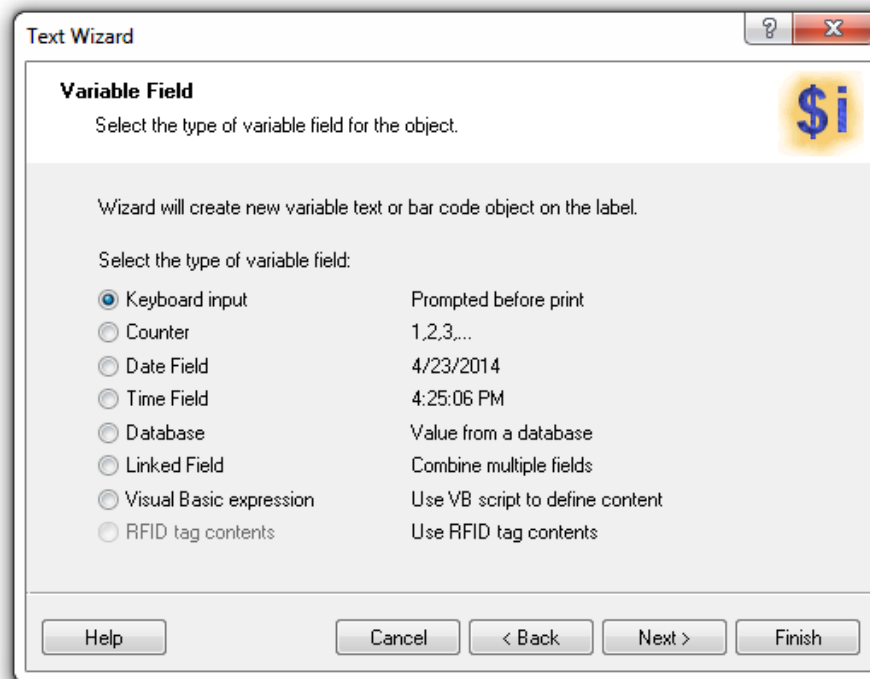
Adding a character in a barcode that is hidden in the Human Readable:

This is used for Zebra Designer Pro 2

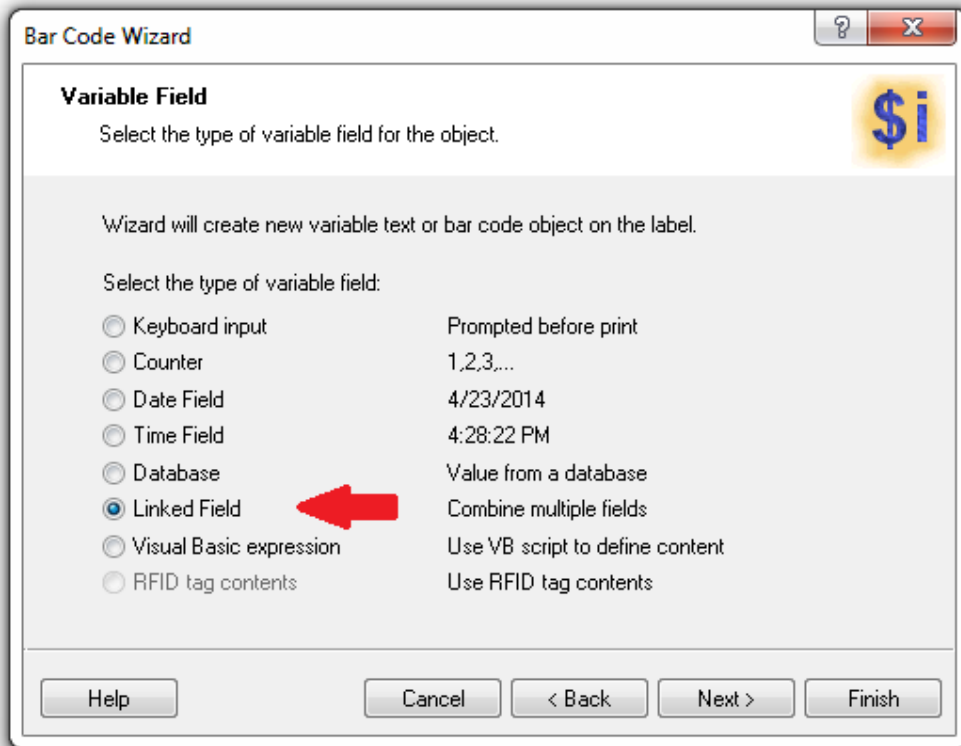
1. Create a text field and set the variable field to what the barcode would typically be set to.

Examples:

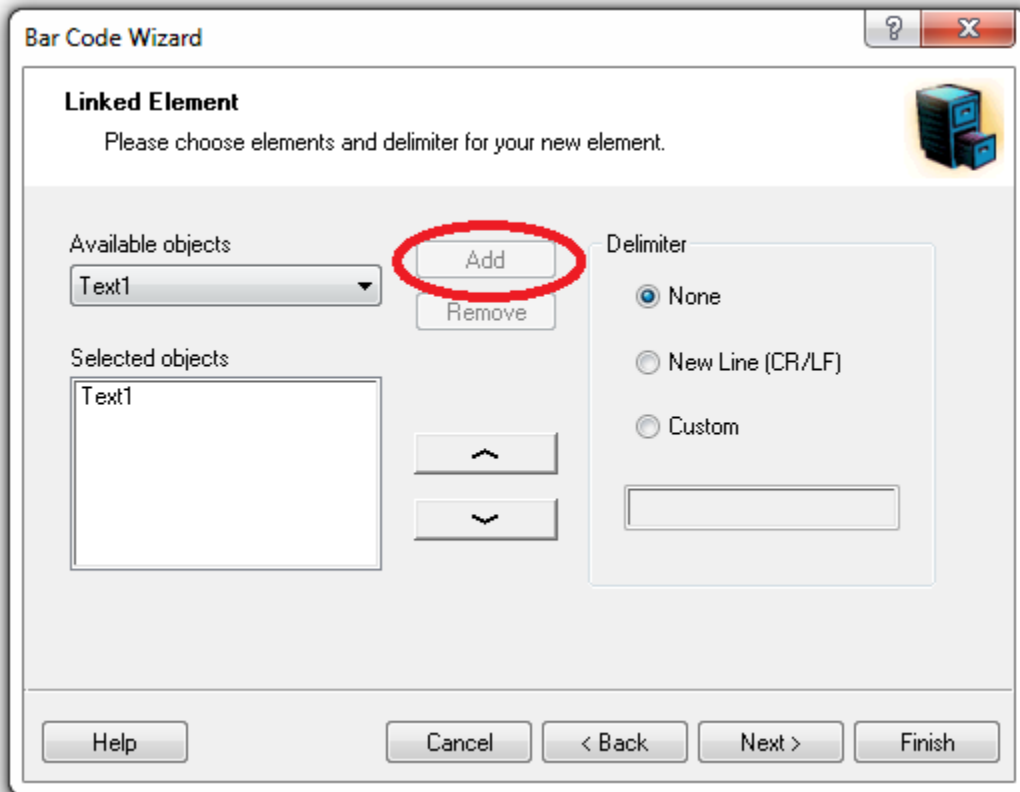
- a. Keyboard input (Manual entry of barcode information.)
- b. Database field (If the barcode information is linked in a database field.)



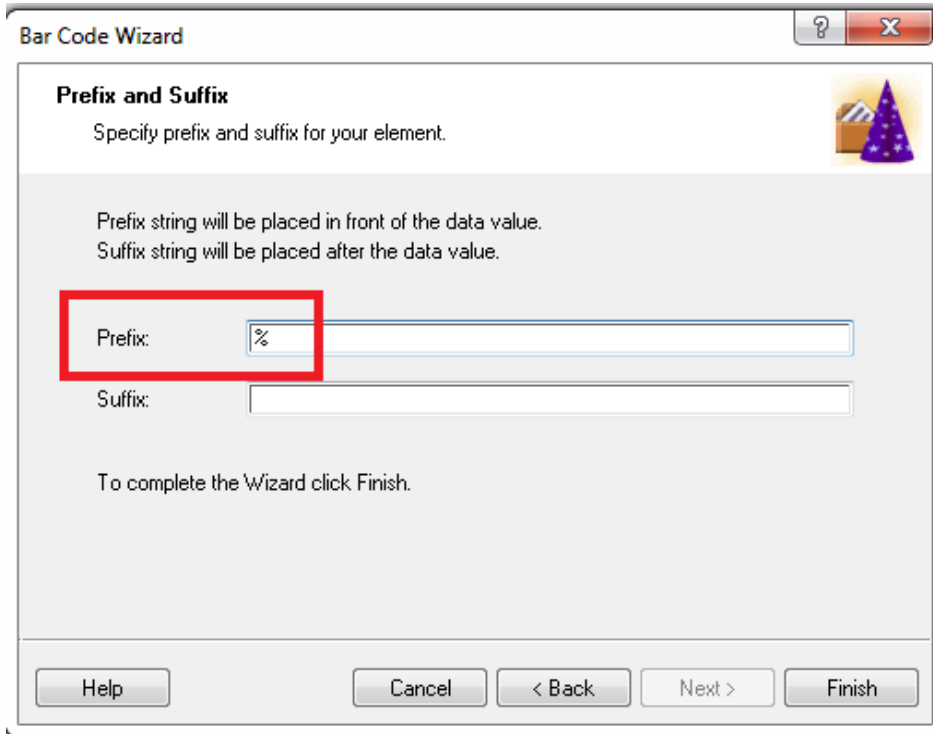
2. Then you want to create a variable barcode and choose “Linked Field.”



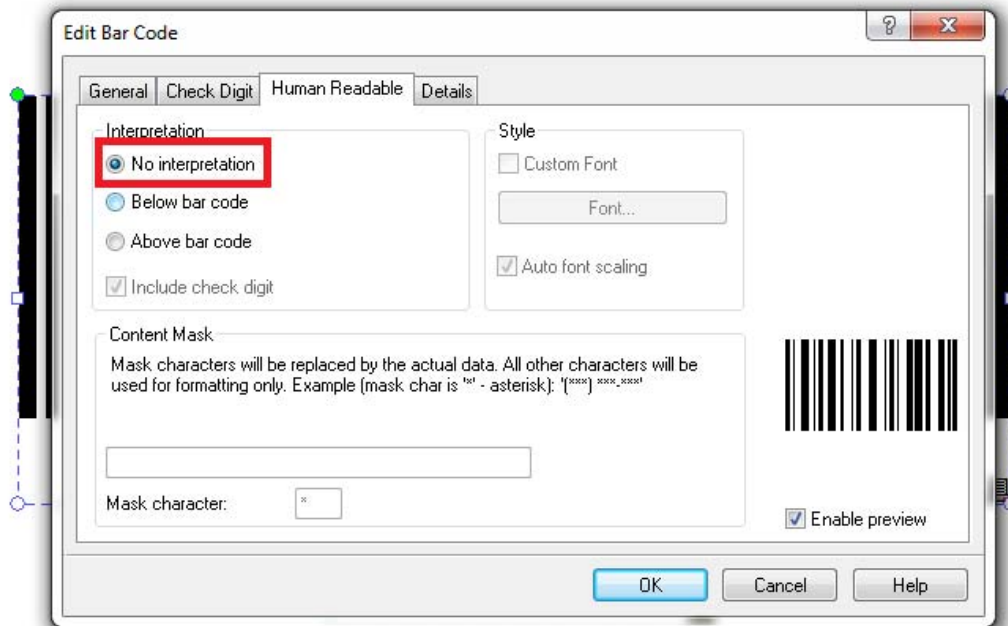
3. Add the text field as the field being linked to the barcode.



4. Since the barcode needs the hidden character, you can use the suffix and prefix options to add it before or after the linked information.



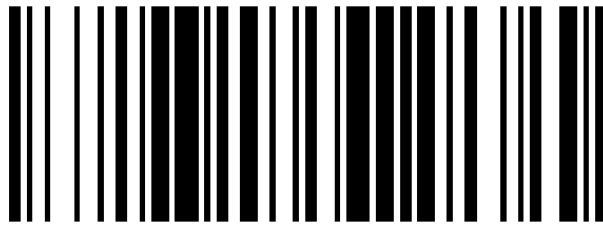
5. Make sure you remove the human readable and set it as "no interpretation."



6. Then just move the text field under the barcode so it appears to be a standard interpretation of the barcode data.



**** Here is what it would look with a (%) as a prefix****



12345