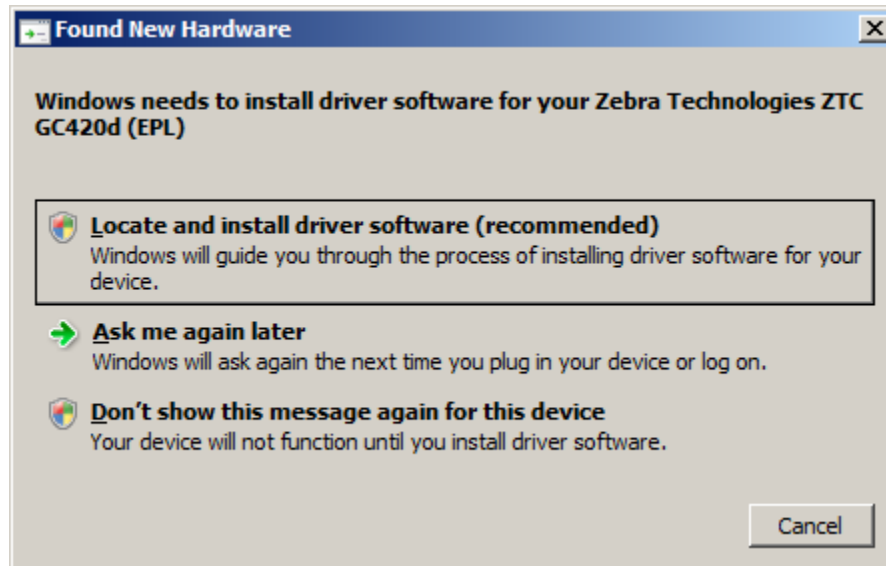


Installing a USB Port for the ZebraDesigner Driver

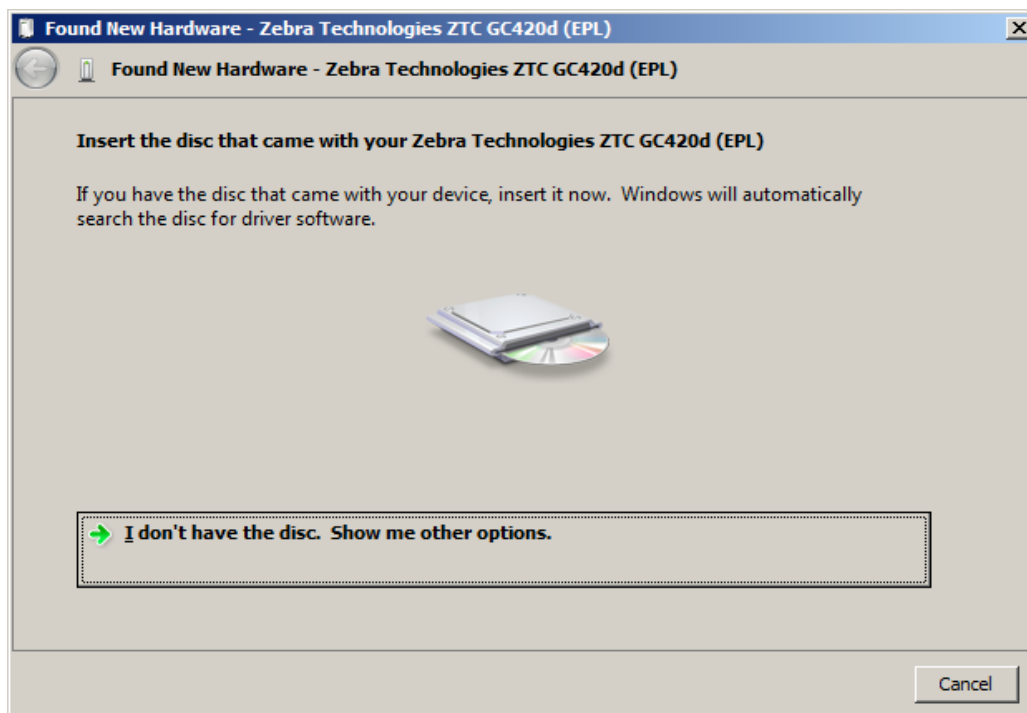
These instructions are for Zebra printers and for customers using Windows Vista or prior Microsoft operating systems. The screen captures below are from a PC running Windows Vista x64 and the driver installed is version 1.7.03.16 released in February of 2014.

The following screens occur if a ZebraDesigner driver does not already exist and will be installed for the first time. The key to success is to follow and correctly answer the prompts of the Found New Hardware Wizard. Otherwise, the prompts will repeat each time you cycle power or a new printer is connected. Windows creates the virtual USB ports by following this process.

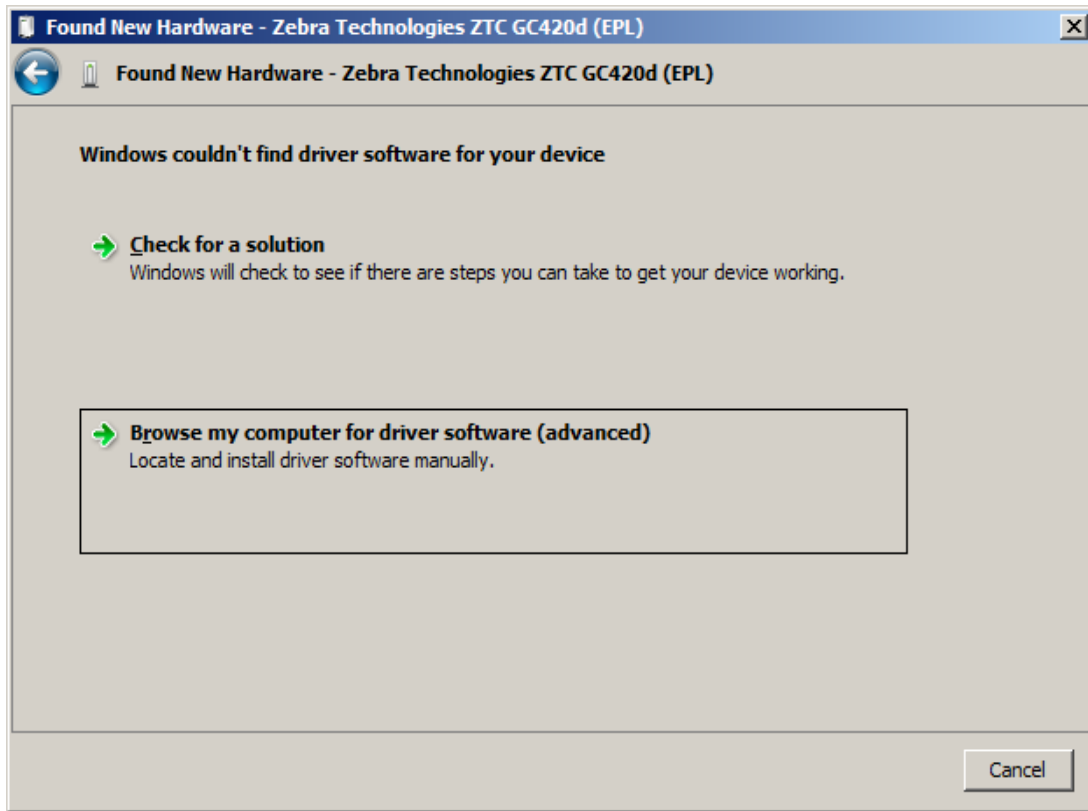
Begin by clicking “Locate and install driver software (recommended)”



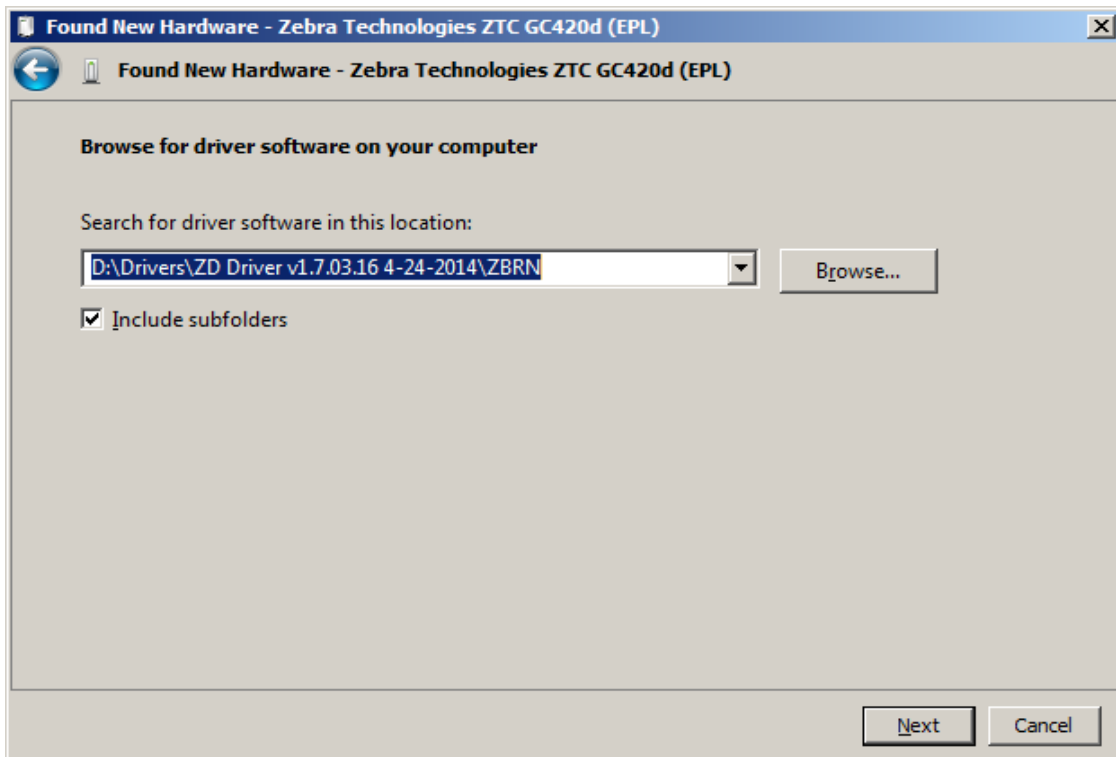
Select I don't have the disc. Show me other options.



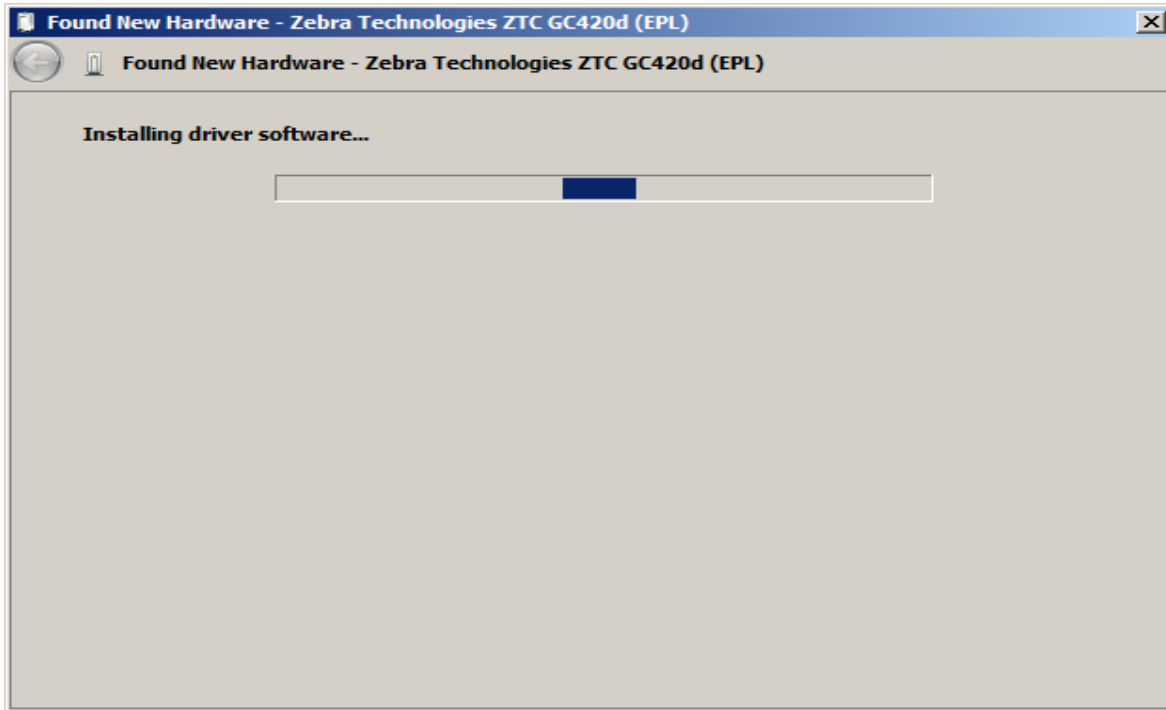
Select “Browse my computer for driver software (advanced).”



It is recommended that you download the most current version of the ZebraDesigner driver from Zebra.com. Once you have the driver and have extracted files, Browse to the location and to the \ZBRN folder



You should see a screen similar to this as the driver software installs...



...then a screen similar to this one after a few moments when the installation completes successfully.



After installation is complete you should now be able to power cycle the printer or the PC without seeing the Found New Hardware Wizard. Each new printer you connect that is supported by the ZebraDesigner driver will also install automatically without having to repeat the Found New Hardware Wizard steps above.

In Windows Vista or above, it is recommended that you use Print Management and not Printers or Devices and Printers to access your driver and change settings.

