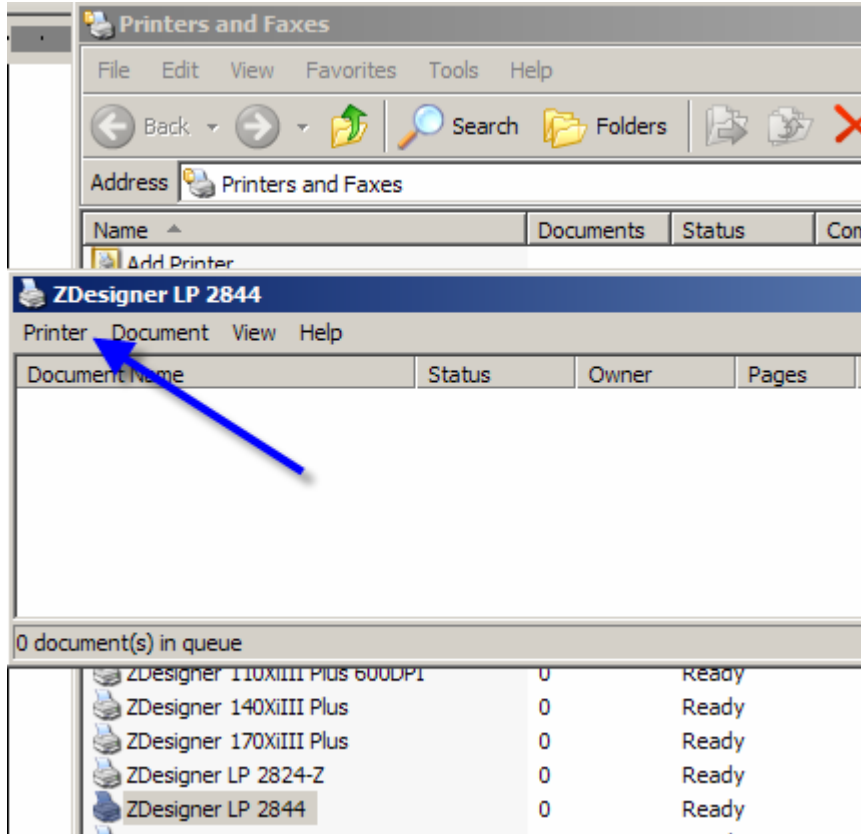
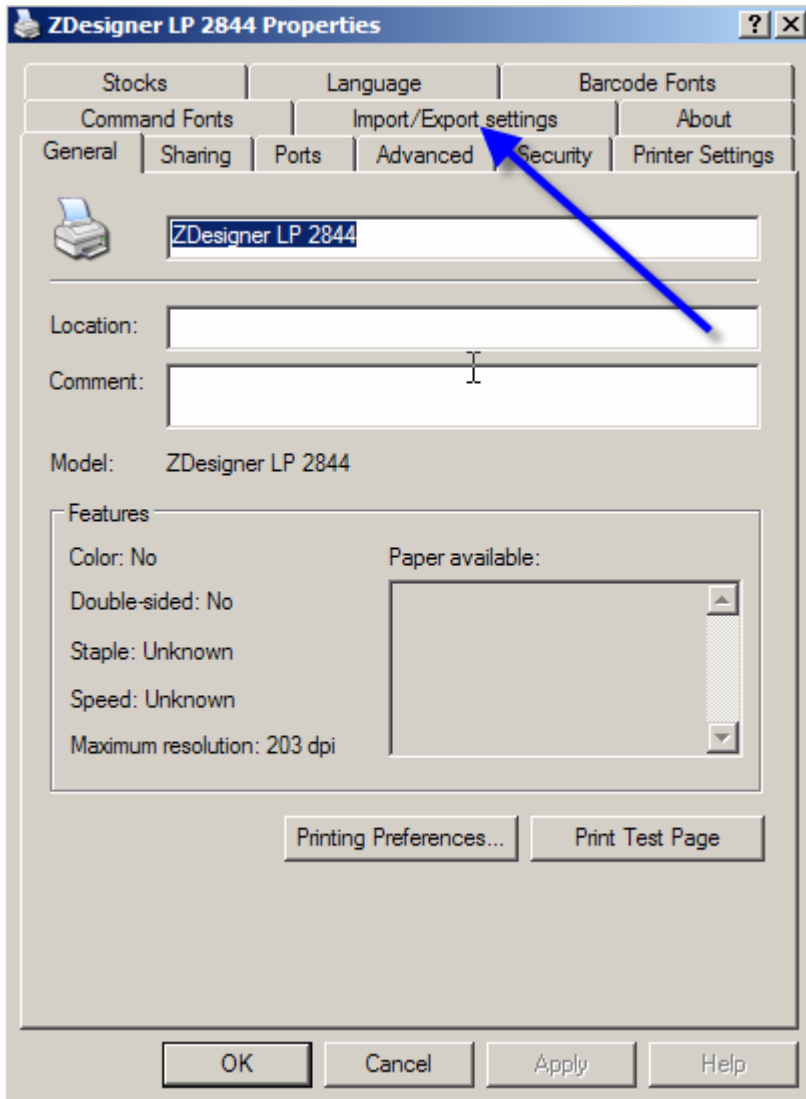


Exporting a ZebraDesigner driver settings file.

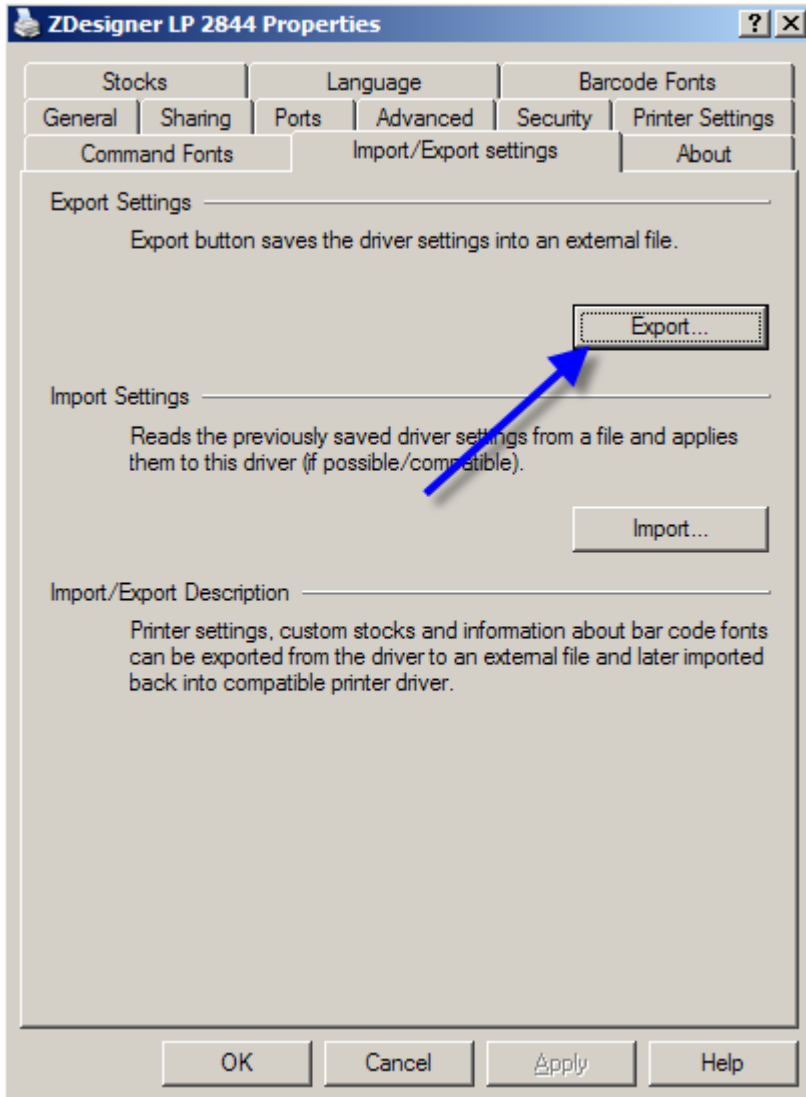
First select Start / Settings / Printers and Faxes...



Then choose the ZDesigner driver and click Printer / Properties.



Next choose the Import/Export settings Tab.



Then select Export... and you will have the option to save the driver settings as a .dsr file. Note the directory where you save this file and the file can then be emailed for testing.