

Adding or Changing Barcodes with the ZebraDesigner Driver

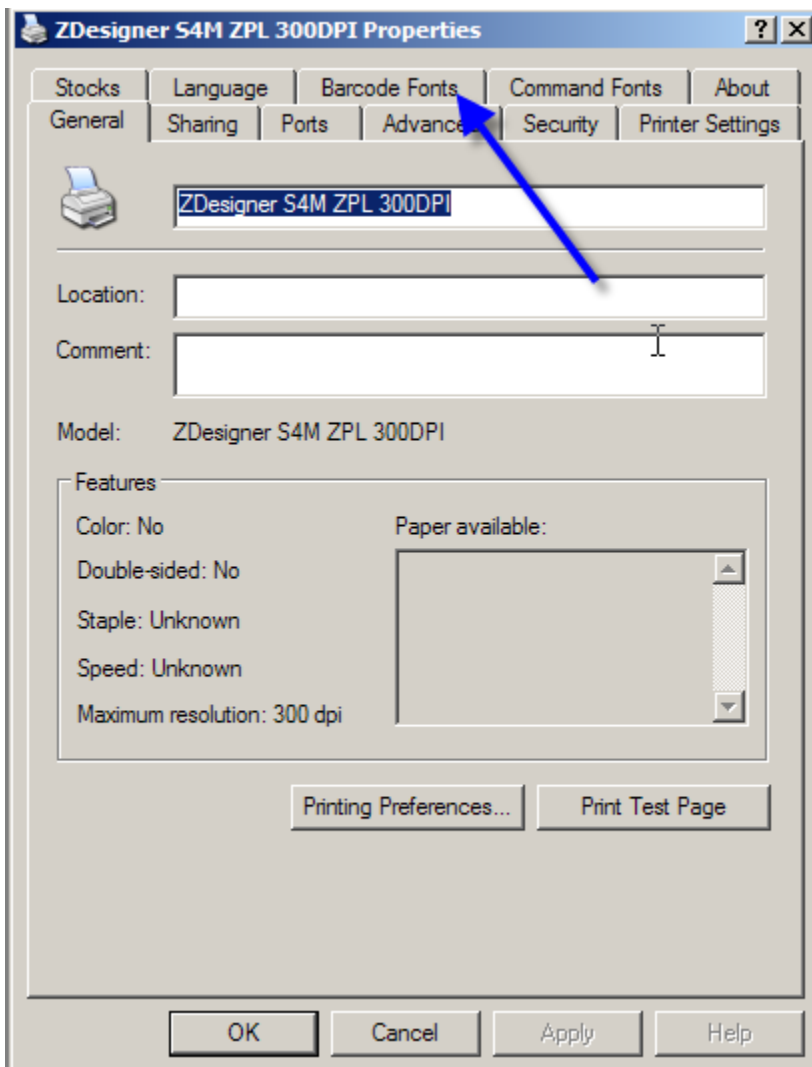
The driver supports 4 common barcodes by default.

Code128
Code 39
EAN 8
EAN 13

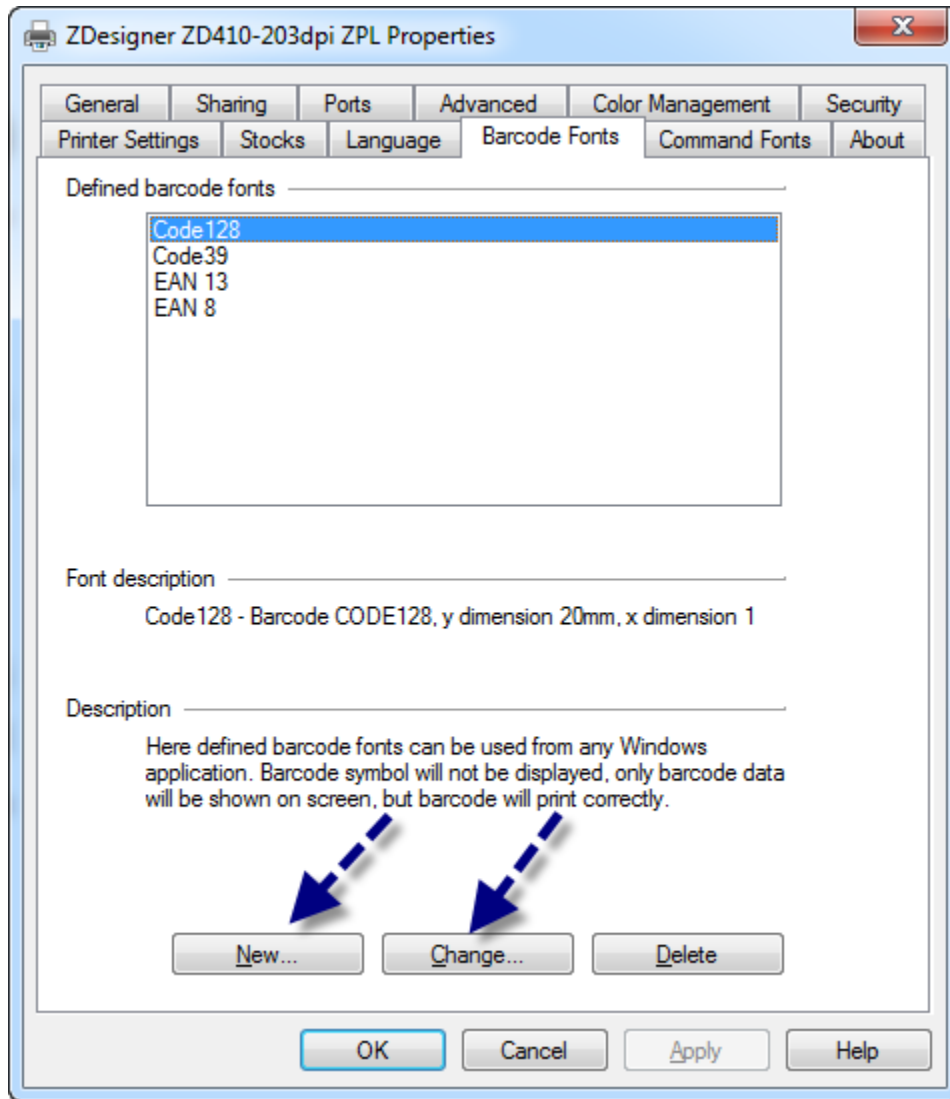
Additional barcodes can also be added. The list of available barcodes to be added depends on the printer model.

You can use the following instructions to either add new barcodes or make changes to various settings for existing barcodes.

From Start/Settings/Printers and Faxes or MS icon, All Programs, Devices and Printers, right click the printer, choose Printer Properties and click the Barcode Fonts tab.

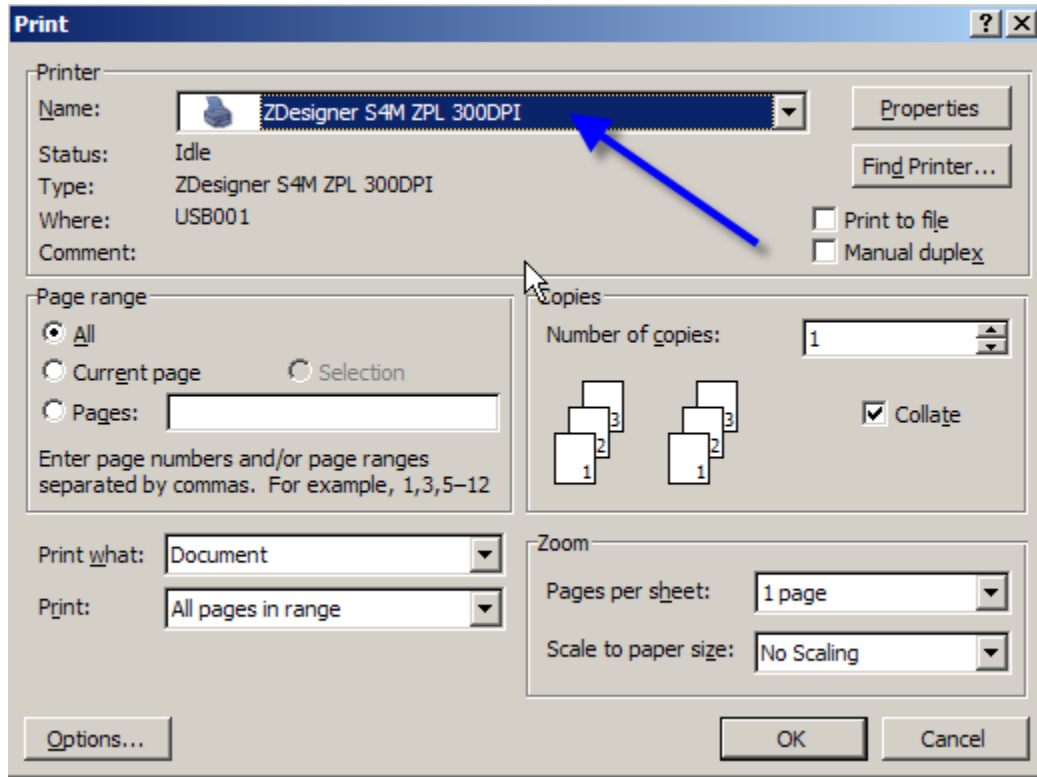


The default list of defined barcodes will display. To edit changeable settings for an existing barcode, highlight the barcode and click Change... To add a barcode that does not appear on the list, click New...



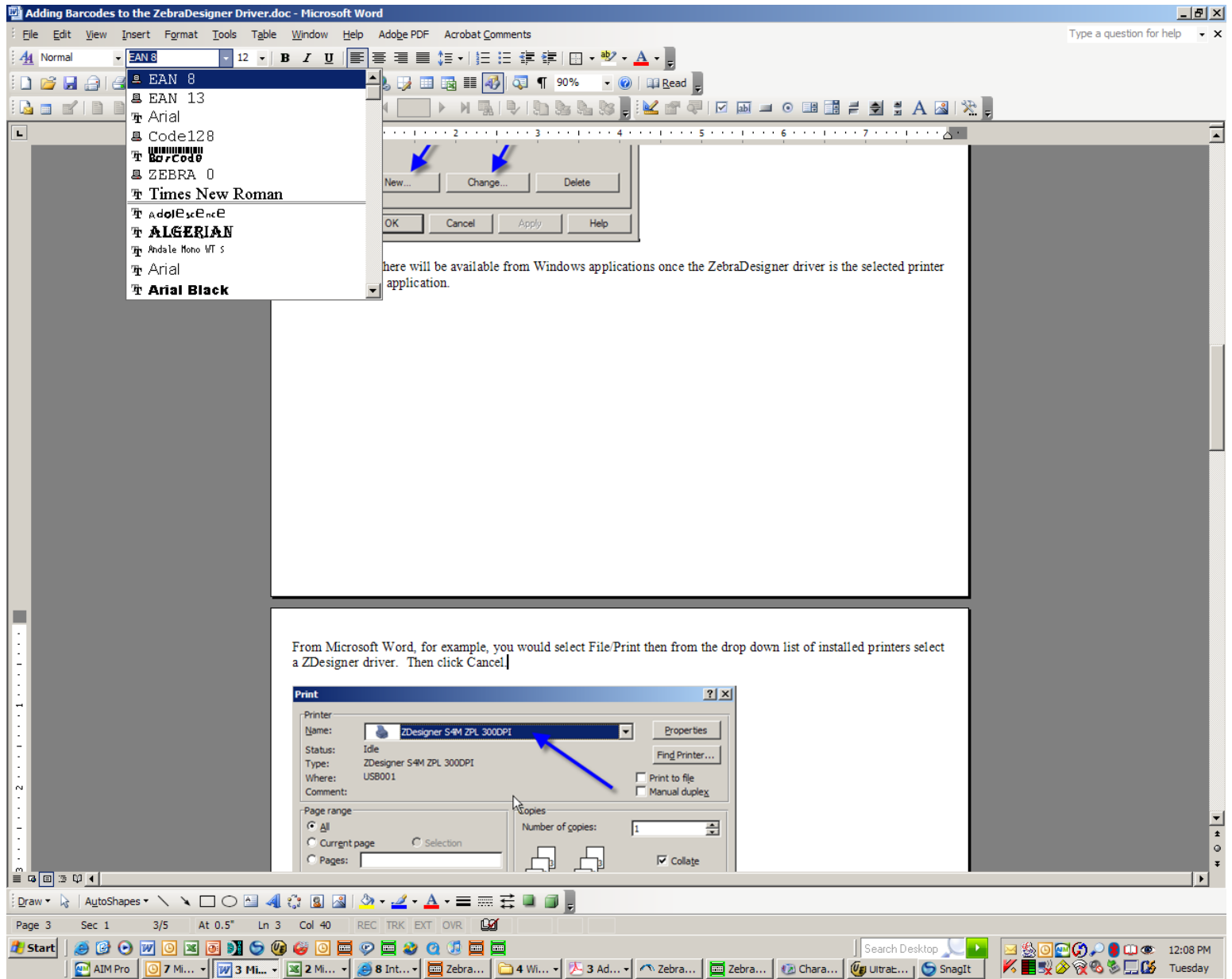
Barcodes listed here will be available from Windows applications once the ZebraDesigner driver is the selected printer driver within the application.

From Microsoft Word, for example, you would select File/Print then from the drop down list of installed printers select a ZDesigner driver. Then click Cancel.



This sets the ZDesigner driver as the selected printer. It is not necessary to click OK at this point, since this would send the current page content to the printer.

The drop down font list from MS Word will then include Zebra barcode fonts and the printer code created by the driver will treat them as internal fonts to the printer.



This example shows the changeable options for a CODE128 Zebra printer Barcode Font.

