



Adding a New Printer Barcode in SAP® Smart Forms™

The SAP system only contains the commonly used barcodes and therefore the Zebra printer actually supports many more than the SAP system details as available.

In some industries or customer applications newer barcodes are becoming more commonly used.

This guide will detail what you need to make sure it has been added into the SAP system for use with Smart Forms.

Note:

The System and Printer Bar Codes must have already been completed or the barcode will not be available, if this has not been completed please refer to the “Adding Barcode in SAP6” help-sheet.

The barcode must also have been added to your SmartStyle, if this has not been completed please refer to the “Adding a New Printer Barcode in SAP® SmartStyles” help-sheet.

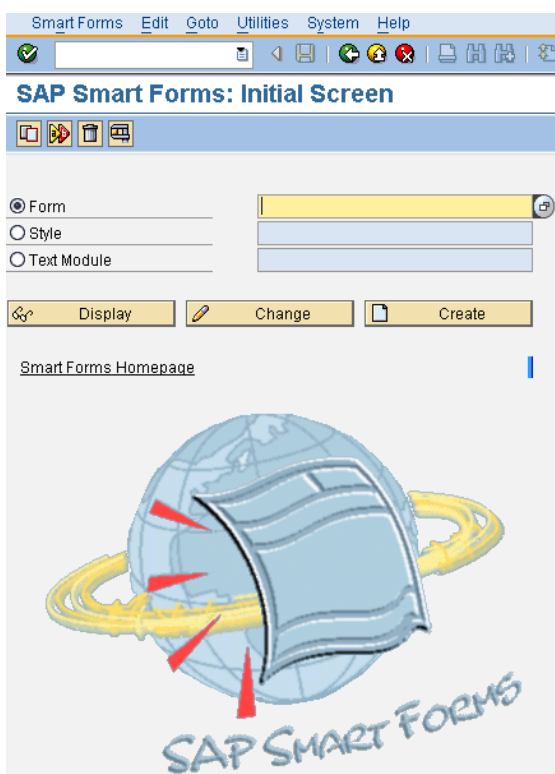
This process details how to add a new printer barcode called Data Matrix into Smart Forms and to perform a quick test print to check it has been successful.

Once you have logged into your SAP system you need to go to Smart Forms.

- In the Transaction Quick Access field at the top left of the screen, enter SMARTFORMS then press Enter

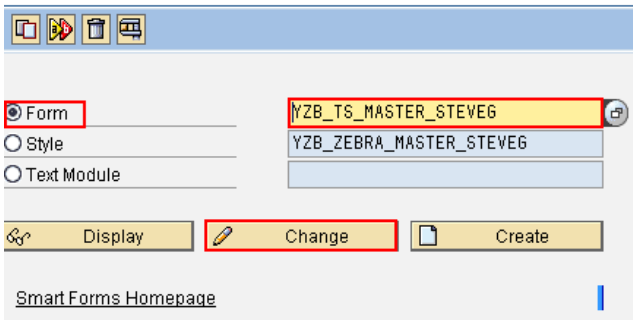


- This will display the SAP Smart Forms: Initial Screen



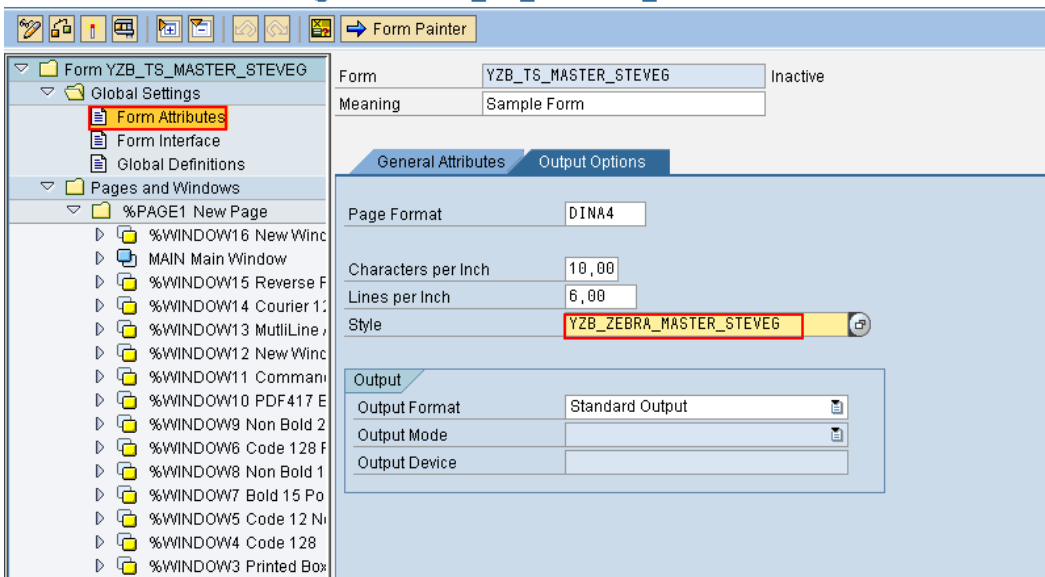
- I am using the Smart Form YZB_TS_MASTER_STEVEG which I need to add the barcode into
- In the Form field you will need to enter the Smart Form name being used

SAP Smart Forms: Initial Screen



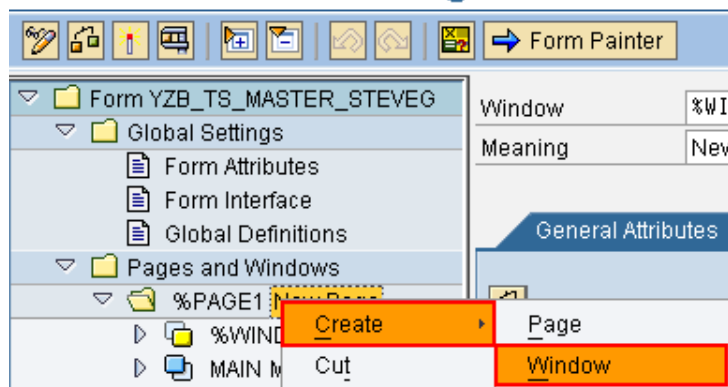
- Then select Change
- This will display the SAP Form Builder page

SAP Form Builder: Change Form YZB_TS_MASTER_STEVEG

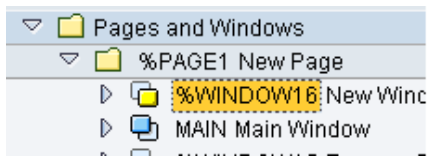


- Highlight the Form Attributes field and double click to display the settings
- Ensure the Style (SmartStyle) is selected that you previously added the barcode into or the available items will not include the new barcode (I am using YZB_ZEBRA_MASTER_STEVEG)
- Go to the Pages and Windows folder and locate the %PAGE 1 New Page Highlight the field and right click

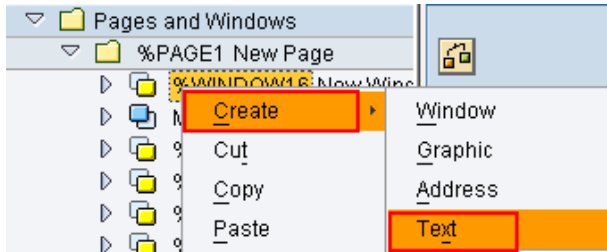
SAP Form Builder: Change Window %WIN



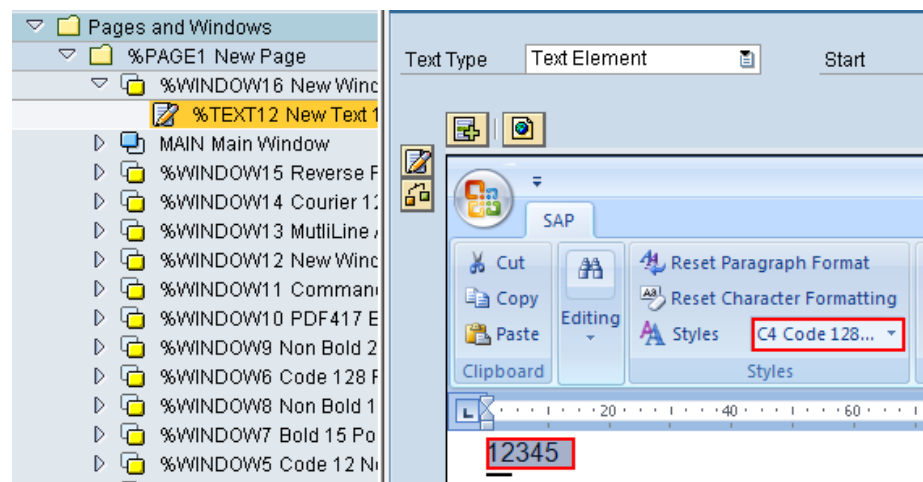
- Select Create, Window
- This will add a new Window to the view – my Window is called WINDOW16



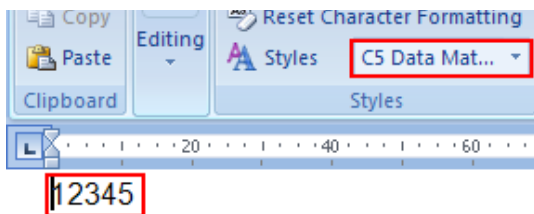
- To create the data in the window select Window16 and right click, Then Create, Text




- This will display the page for the new TEXT field (my text field is called TEXT12)



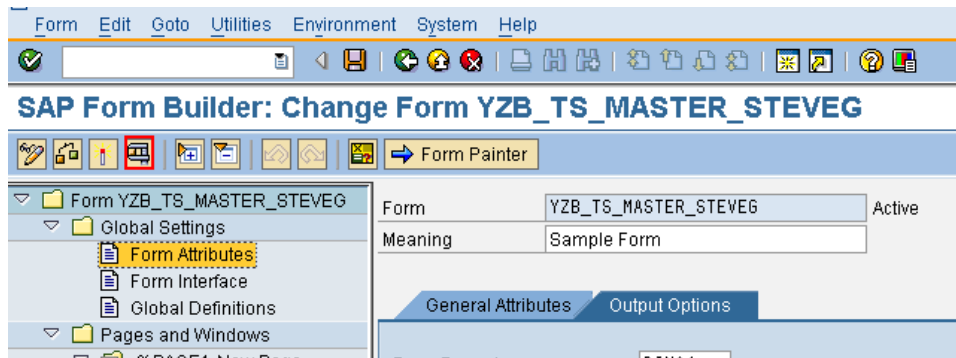
- If you enter some data in the page like 12345 then select the drop down Style you want to use:- C4 Code 128 or to use the new field select C5 Data Matrix



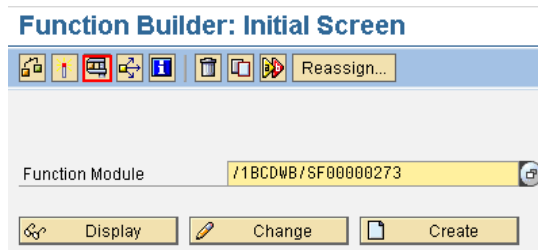
- This field will be sent as that Barcode (or font if a font is selected)
- Select the Save / Disk icon at the top of the screen to save the item 
- Select Form, Activate to Activate the new Smart Form

Testing the Smart Form

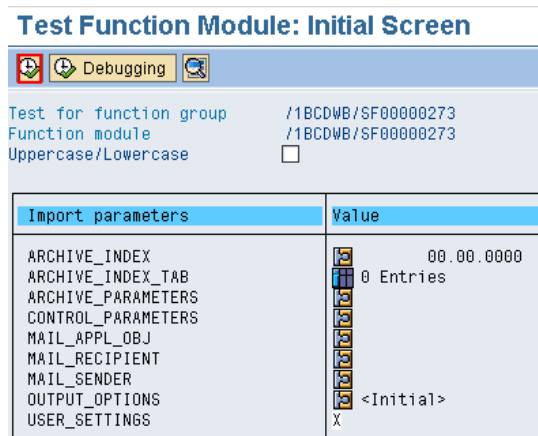
- To Test the Smart Form actually works and contains the new barcode select the Test button (Vice icon) from the top of the page or press F8



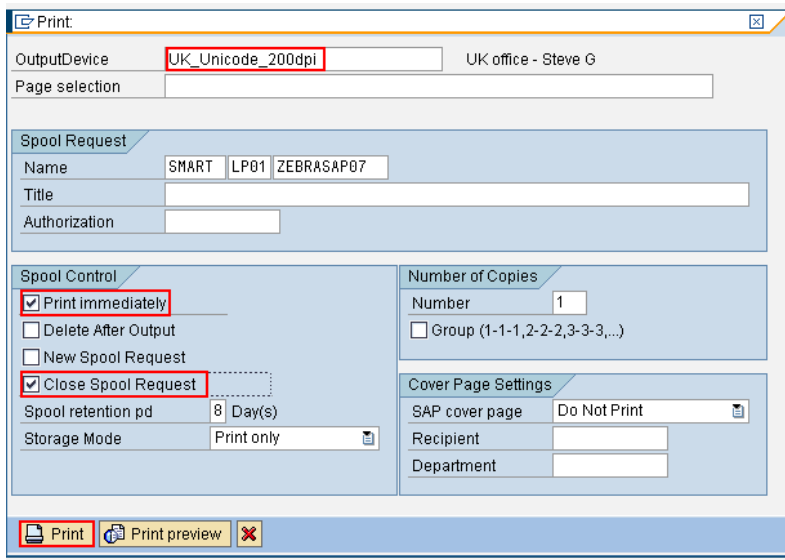
- At the Function Builder screen
Select the Test button (Vice icon) or press F8 a 2nd time



- At the Test Function Module screen
Select the Execute button (Clock with Green Tick icon) or press F8

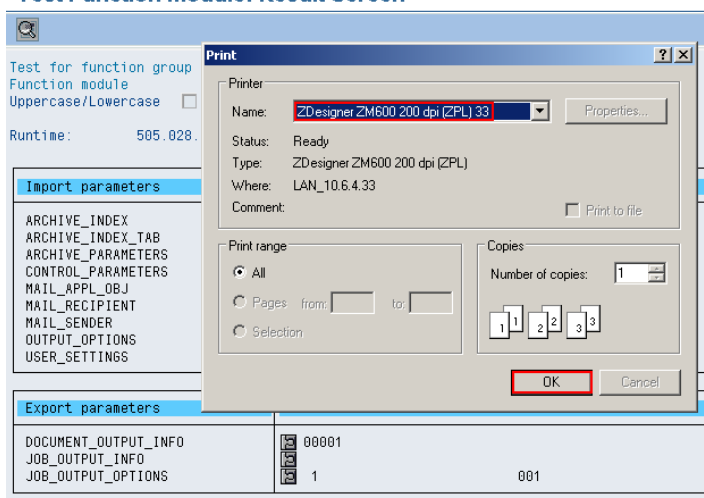


- The Print output screen should now be displayed



- Select the Output Device you want to test print to
- Select the Print immediately check box
- Select the Close Spool Request check box
- Select the Print button
- The Test Function Module: Result Screen should be displayed and the job will print.
I have my system set to have the user select the printer at print time (G selection)
I select the printer and choose the OK button to Print.

Test Function Module: Result Screen



The label prints for me as below:

