

## Windows 10 Bluetooth Setup with Zebra Printers

These instructions use a ZQ510 as an example but will work with any Bluetooth capable Zebra printer.

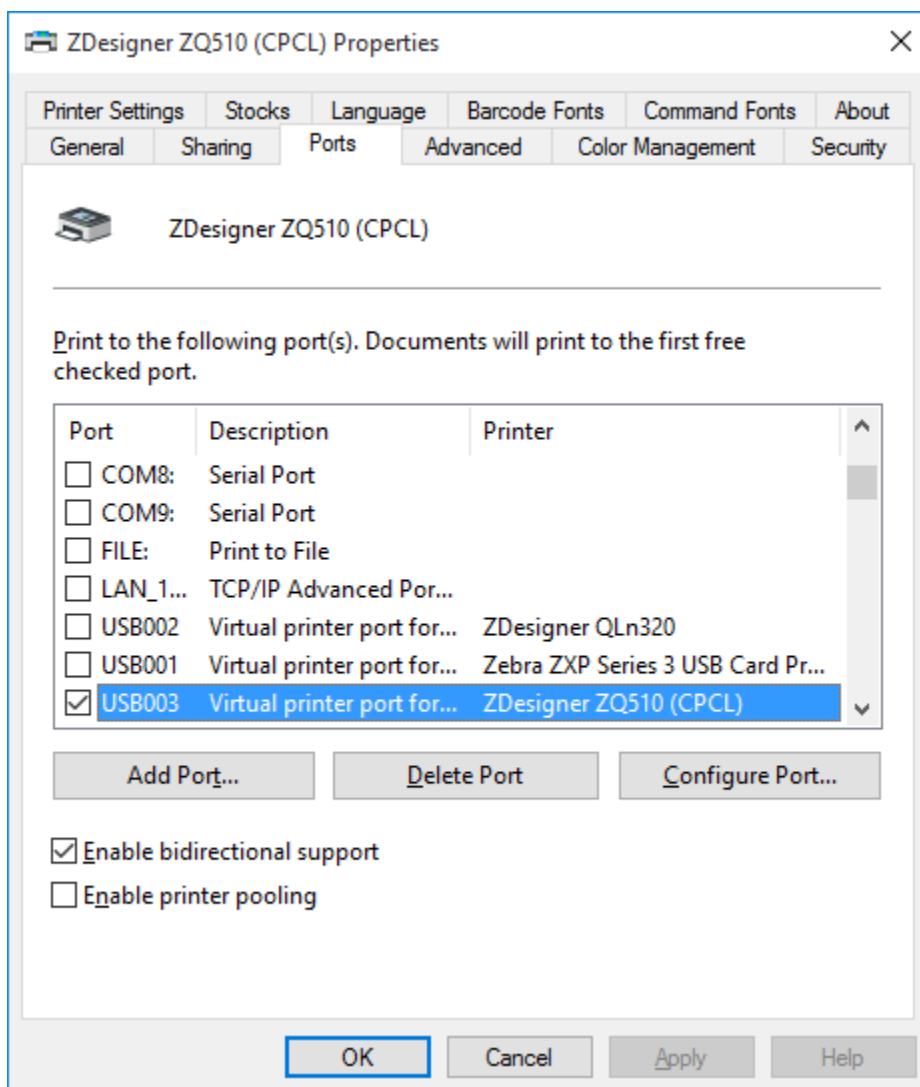
1. Ensure that you have the ZebraDesigner driver installed and available.

If you are not certain click this link:

SO6673 = Installing ZebraDesigner Driver for USB Printer

<https://km.zebra.com/kb/index?page=content&id=SO6673>

2. With the driver installed, connect your Zebra mobile printer via USB and make sure that you can communicate with the printer. Plug and Play from Windows 10 will automatically create a ZDesigner Driver instance for your printer with a USB port.



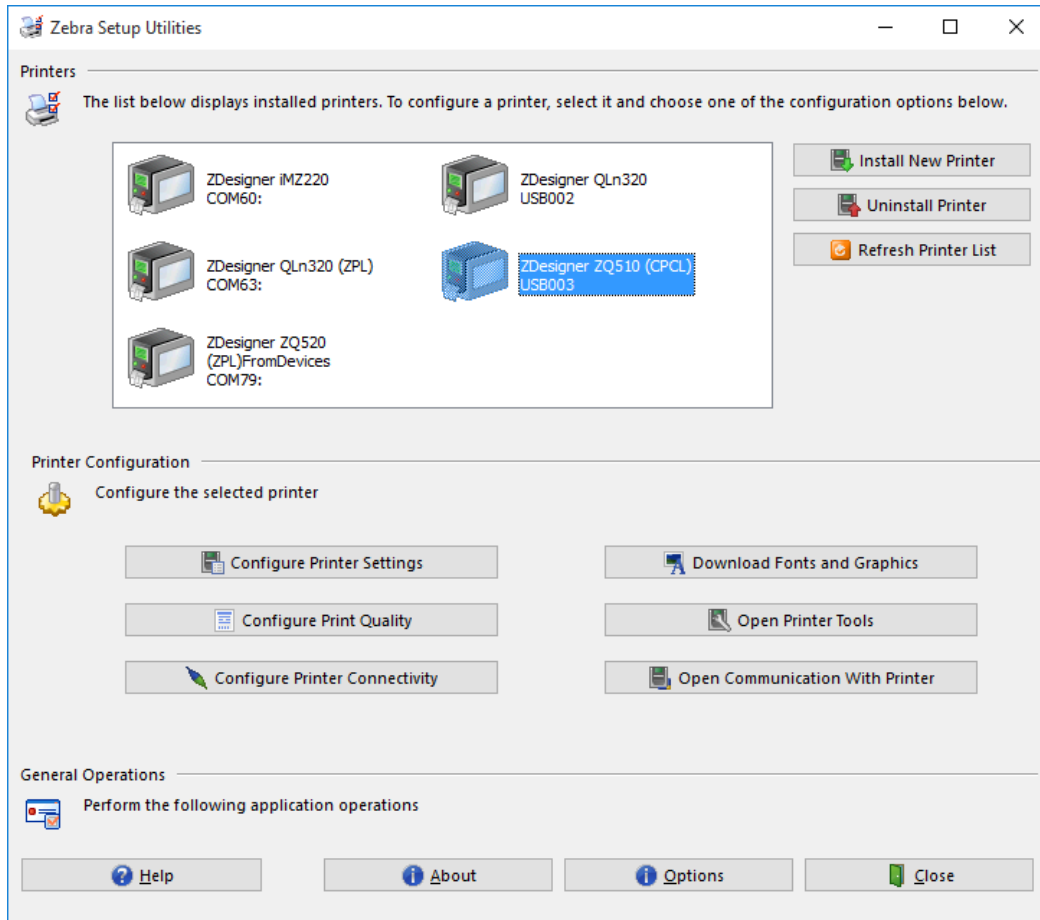
3. Download and install the Zebra Setup Utility (ZSU)

You can access the following link for details:

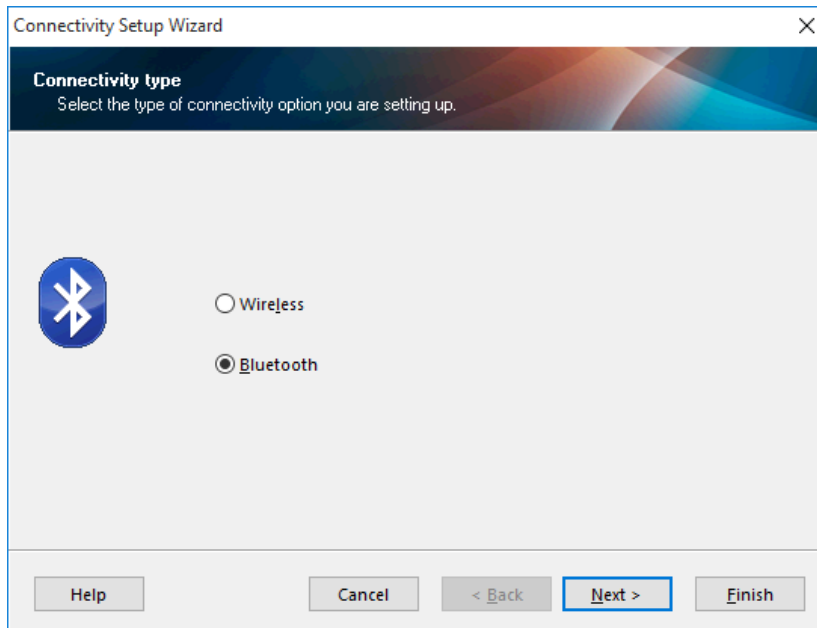
SO8205 = Bluetooth Setup using the Zebra Setup Utility

<https://km.zebra.com/kb/index?page=content&id=SO8205>

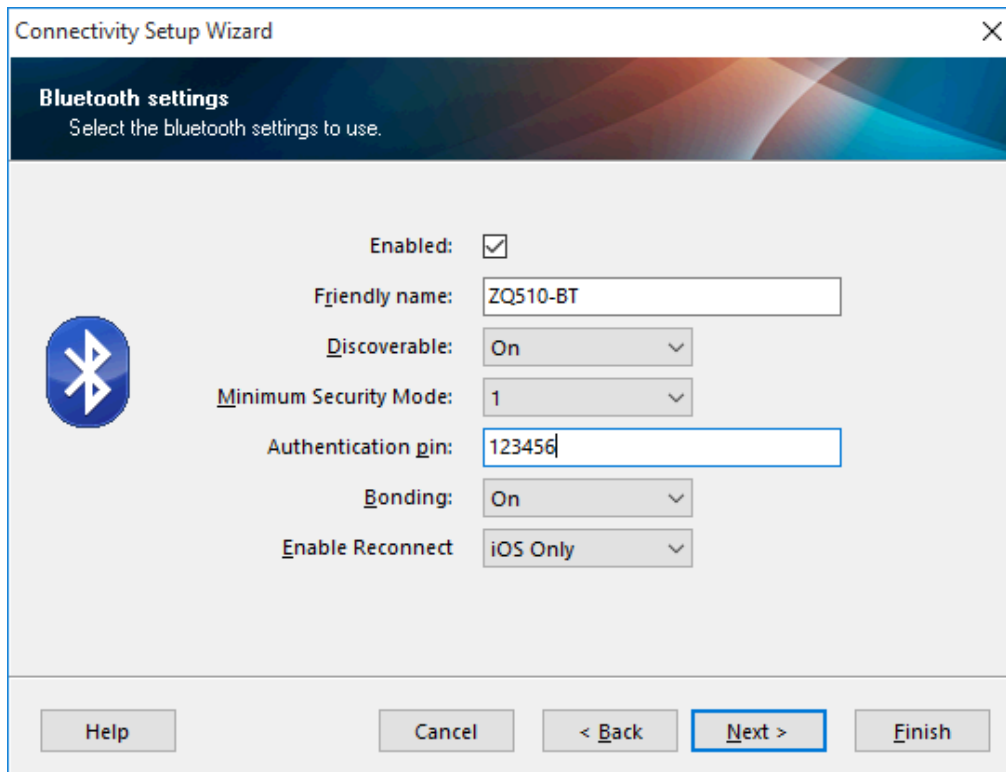
4. Once you have started the ZSU, select the ZDesigner driver for your USB connected Zebra printer and choose Configure Printer Connectivity.



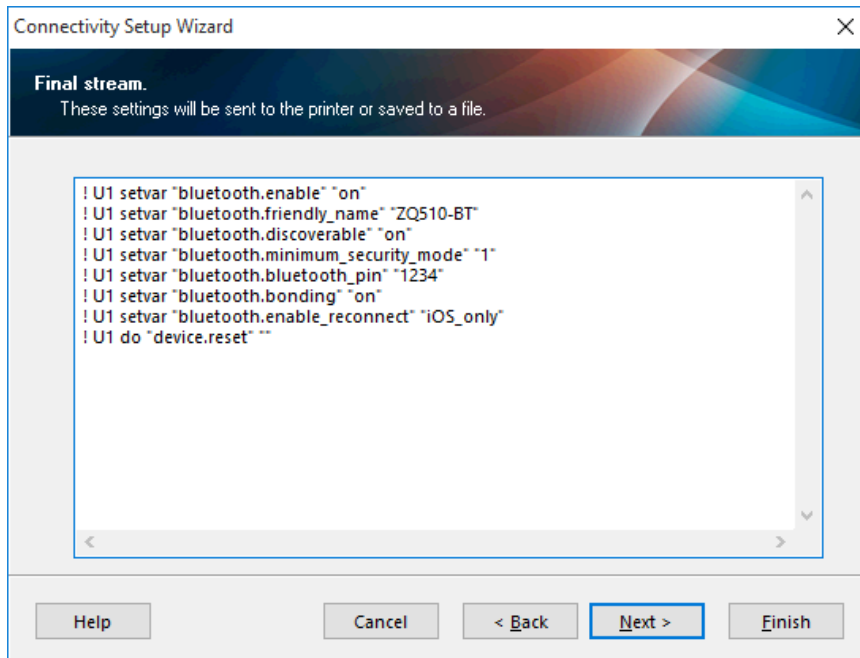
5. Select Bluetooth and click Next



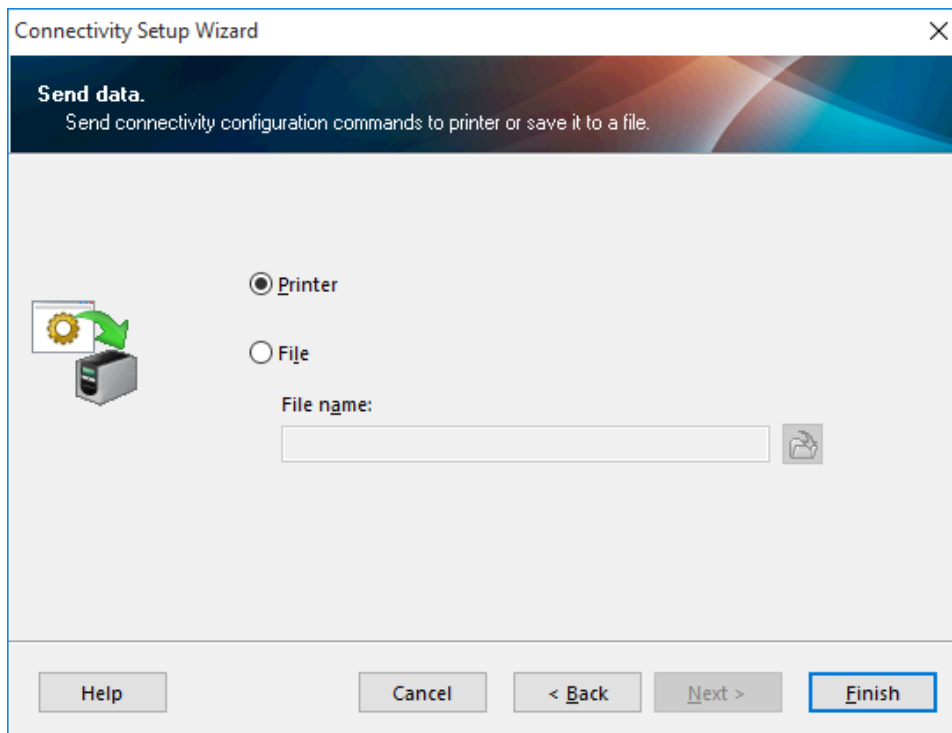
6. Enter a Friendly name and an Authentication pin number of your choice. You can leave the default values for the remaining Bluetooth settings and click Next.



7. Click Next >



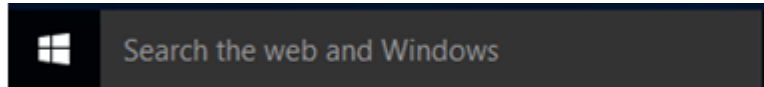
8. Unless you have some need to capture the settings to a file, leave this option set to Printer and click Finish.



(In the case of a ZQ510 the printer displays RESTARTING after receiving the Bluetooth settings)

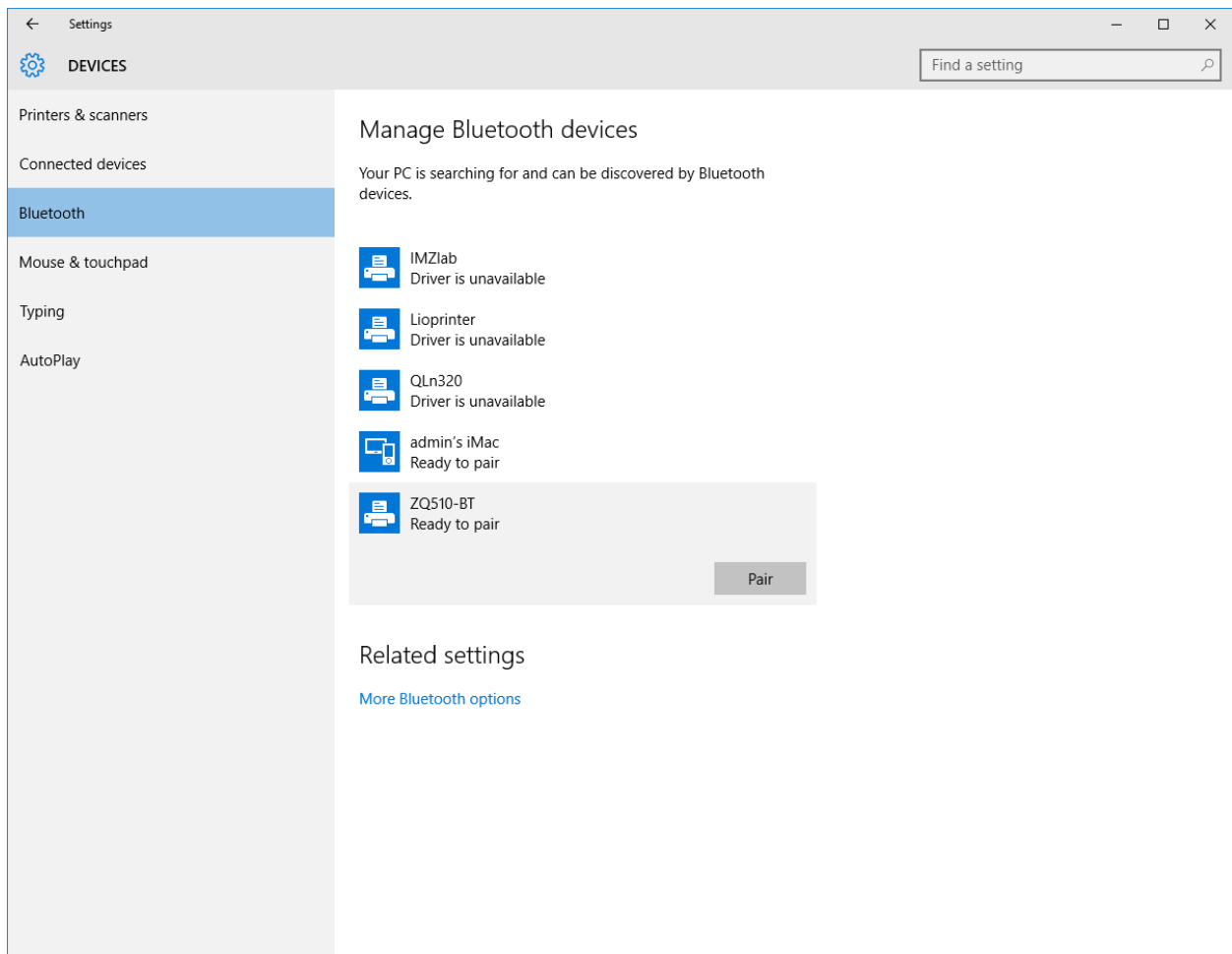
You can now close the ZSU and disconnect the USB cable from the printer.

9. In the Windows 10 “Search the web and Windows box” type in Bluetooth and select Bluetooth Settings.

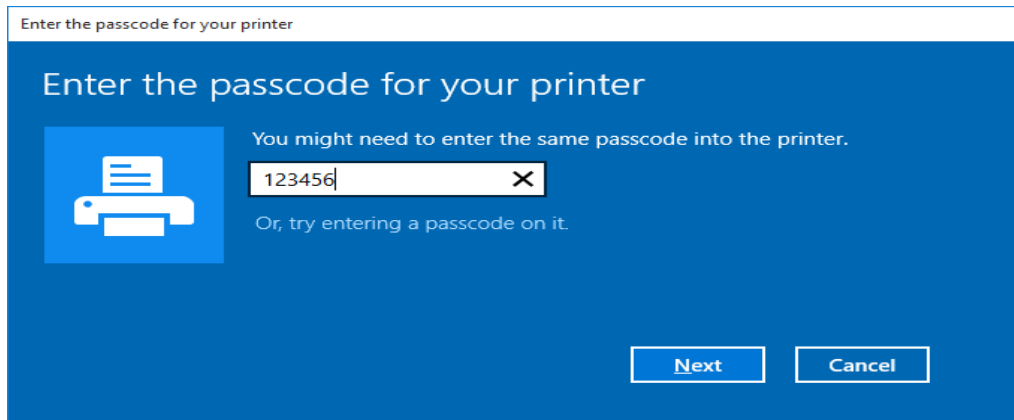


After a few moments, Windows should list your Zebra Bluetooth printer

10. Highlight the printer with the Friendly name you had entered in the Zebra Setup Utility and click Pair

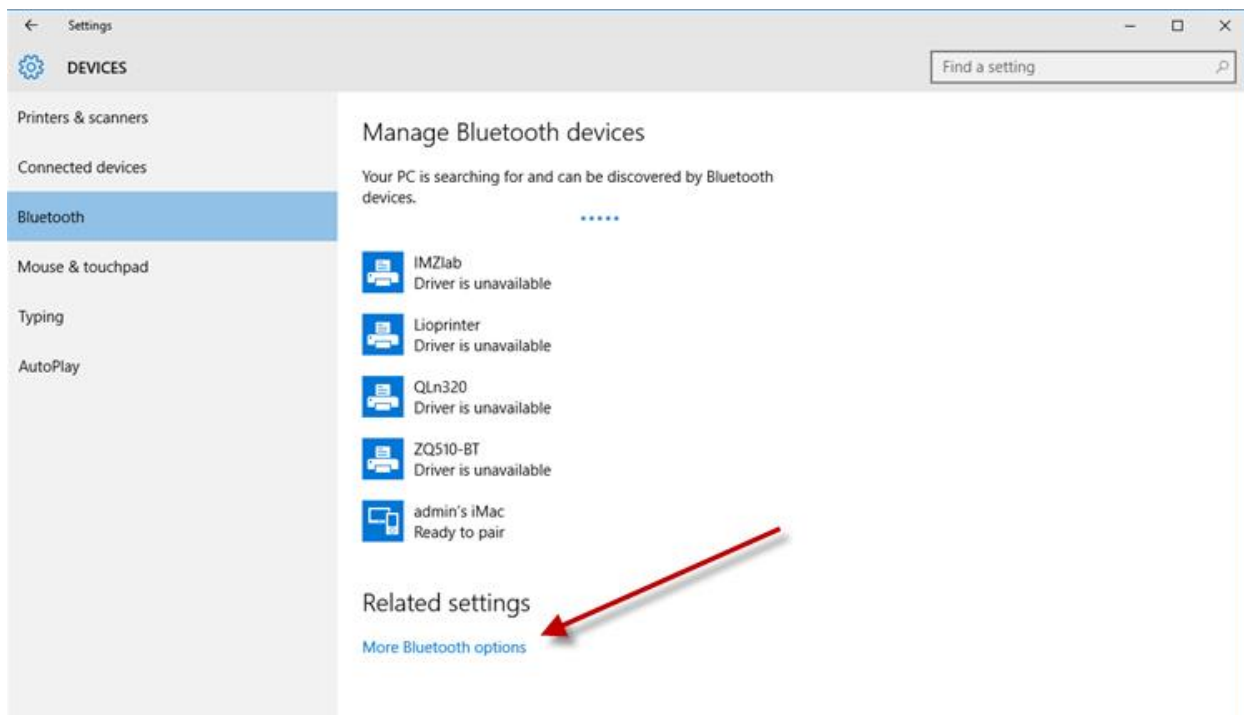


11. When prompted, enter the passcode you had also created in the ZSU and click Next



The screen may quickly flash Connected but then will show "Driver is unavailable"

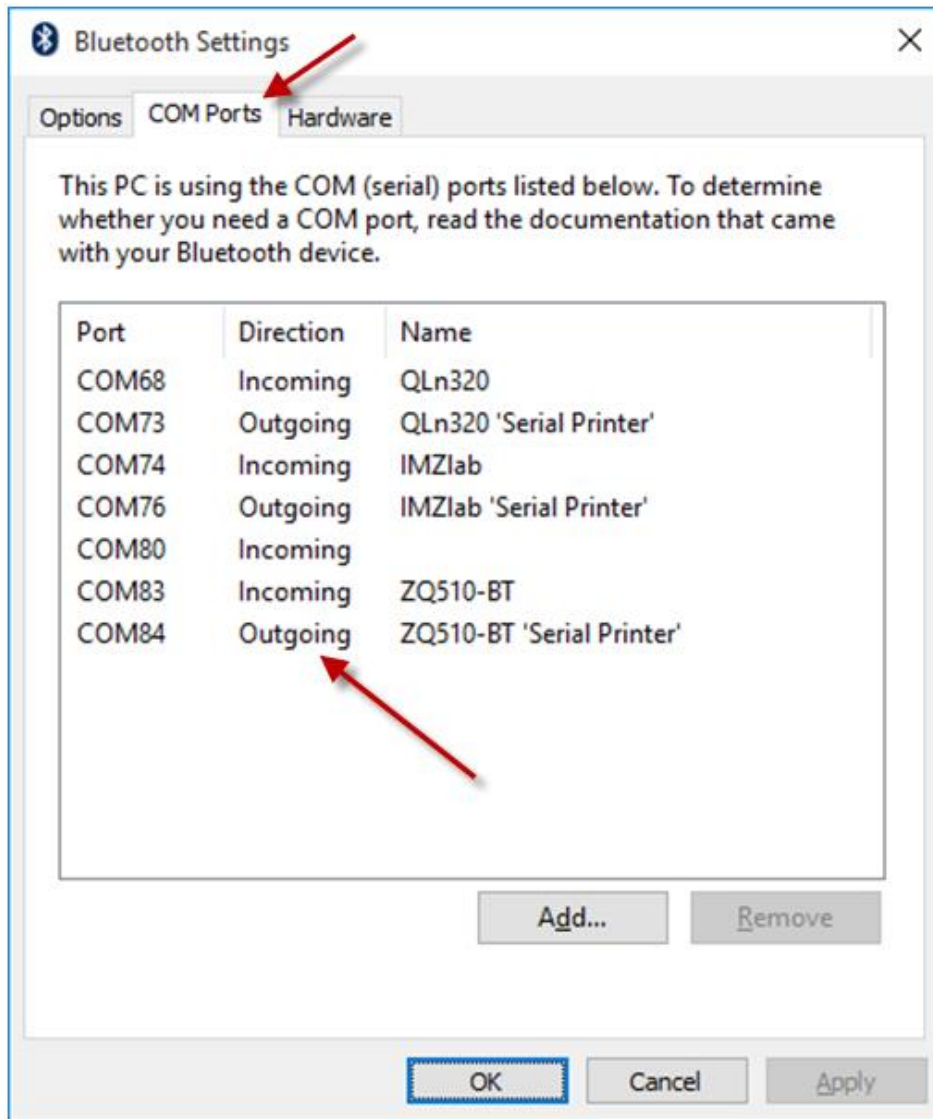
12. Click More Bluetooth options



**It is critical that you follow these next instructions closely and choose the COM port created by Windows 10. It will not work and will result in Error if you do not or cannot select the COM port created by Windows 10.**

13. From the Bluetooth Settings box that appears, click the COM Ports tab and confirm the Outgoing port listed for the Zebra printer and its Friendly name that you had previously created. In this example the COM84 is exceptionally high due to passed pairing attempts that failed because of known issues in the earlier versions of Windows 10. The latest updates have addressed those issues so your Windows 10 installation must be up to date.

(See SO8986 - Windows 10 Bluetooth pairing issue when using the Zebra Driver)

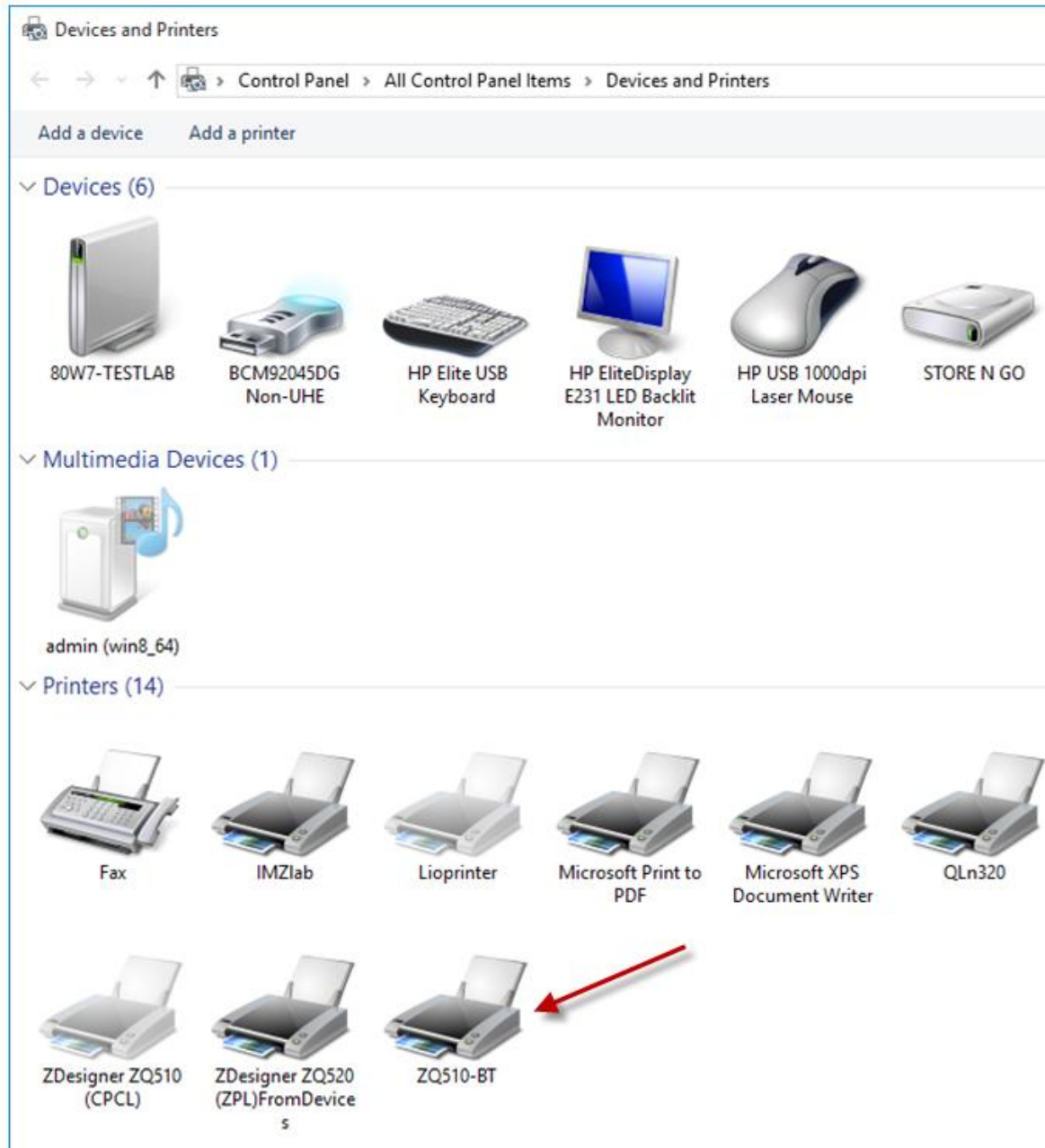


14. If Devices and Printers is already open, close it and re-open.

Manage Bluetooth devices and Bluetooth Settings should also be closed.

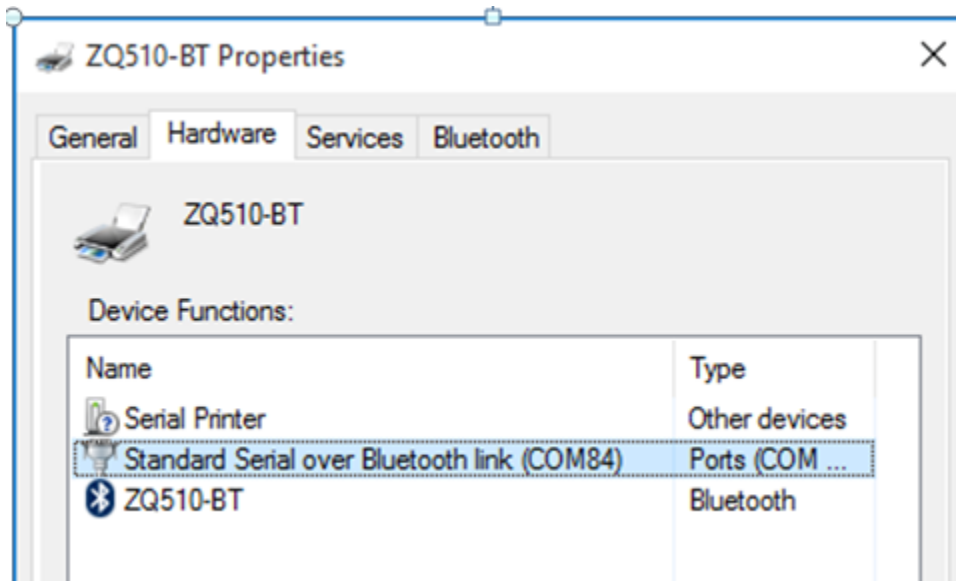
Your printer with its friendly name should be listed.

15. Right click the printer and choose Properties...





...This shows the COM port created by Windows 10

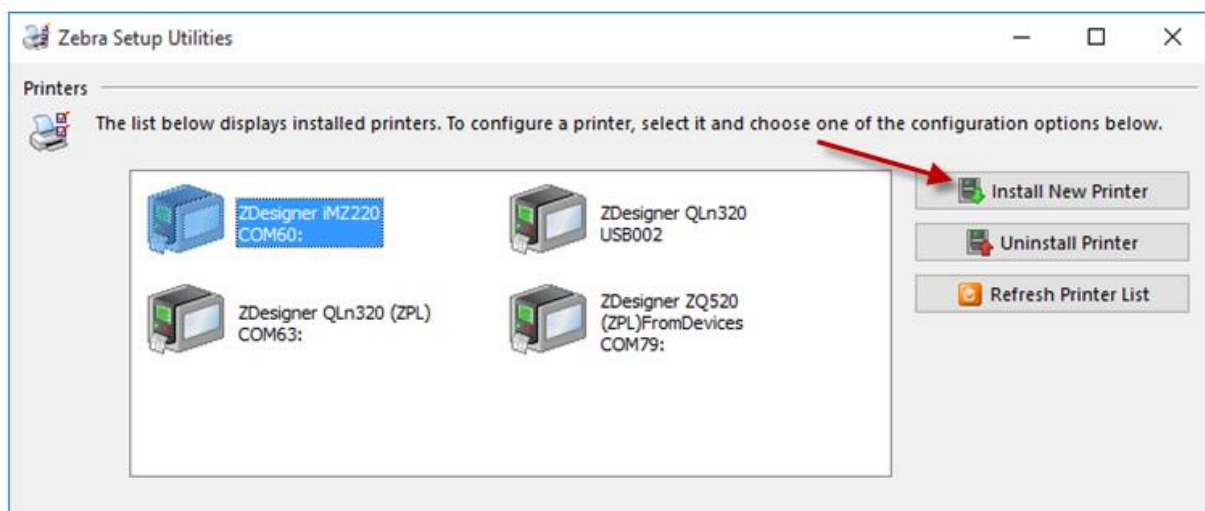


**In order to print successfully with no Errors, you must select this COM Port**

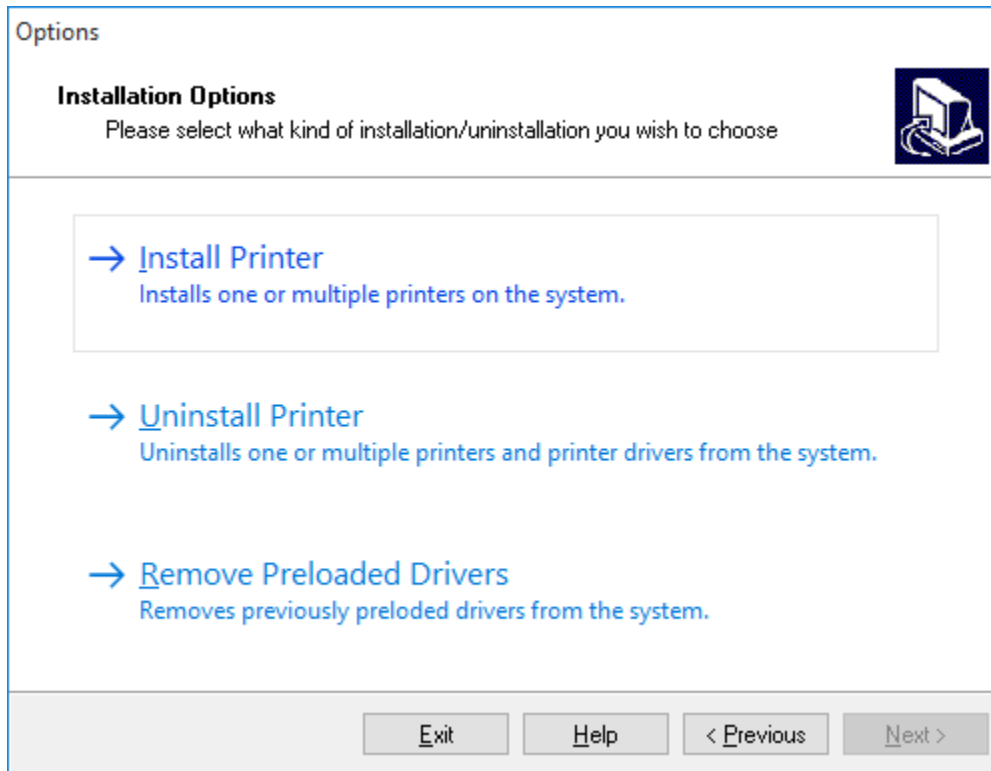
**It has proven to be necessary to manually add a new printer.**

16. Open the Zebra Setup Utility, if you did not download and install a new version of the Zebra Setup Utility at the beginning of this process, check the About screen to ensure that you are running a current version that will install a current ZDesigner driver (v1.1.9.1155 or newer).

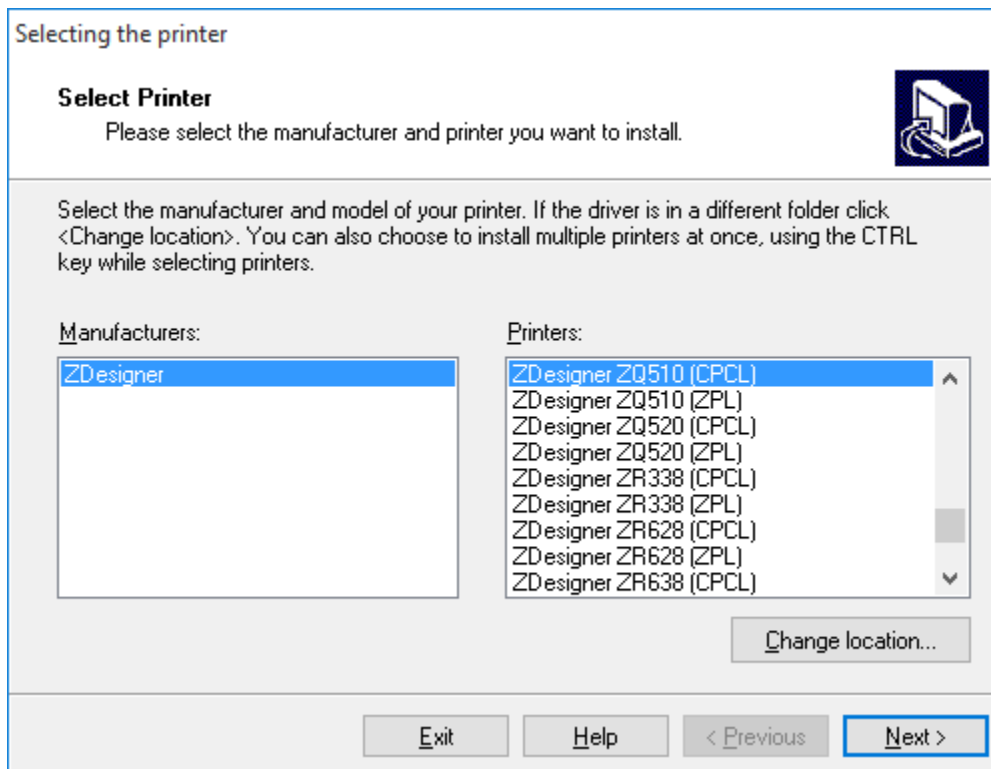
Select Install New Printer



17. At the Options screen Choose Install Printer



18. Select your printer model and the language you wish to use then click Next>



## 19. Temporarily select LPT3

**Options**

**Printer Options**  
Please select port, printer name and language.

Enter the name for your printer. Also, select the port your printer is connected to. When you are done, select <Next> to install the printer and add an icon to the Printers folder.

Driver version: 5.1.07.5682  
Printer name: ZDesigner ZQ510 (CPCL)

Available ports:

- COM8:
- COM9:
- FILE:
- LAN\_10.80.209.104
- LPT1:
- LPT2:
- LPT3:**

I want to use this printer as the Windows default printer.

Select language: English

## 20. Uncheck "Launch installation of Zebra Font Downloader Setup Wizard" and click Finish

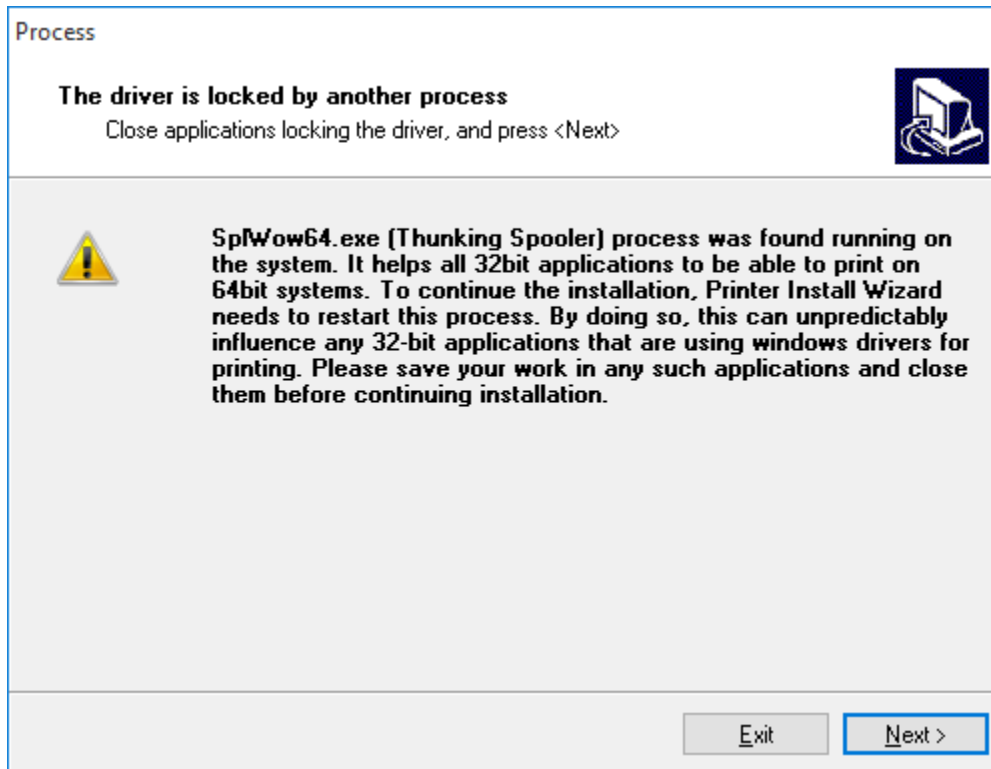
**Read me**

**Additional Install Options**  
Please choose if you want to install any of the following applications.

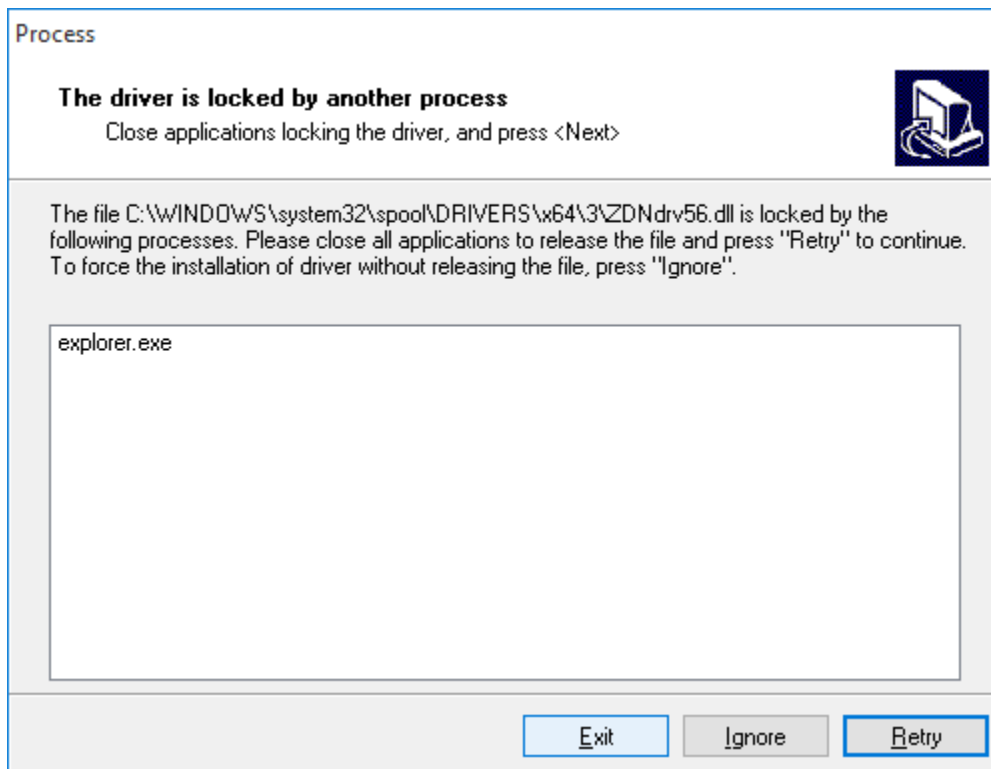
Launch installation of Zebra Font Downloader Setup Wizard  
 Launch installation of Zebra Status Monitor Setup Wizard

Setup will launch Zebra Font Downloader Setup Wizard or Zebra Status Monitor Setup Wizard. Zebra Font Downloader and Zebra Status Monitor are applications which will simplify the use of printers. If you want to launch the installation later just run them in the driver installation folder zebrafd.exe

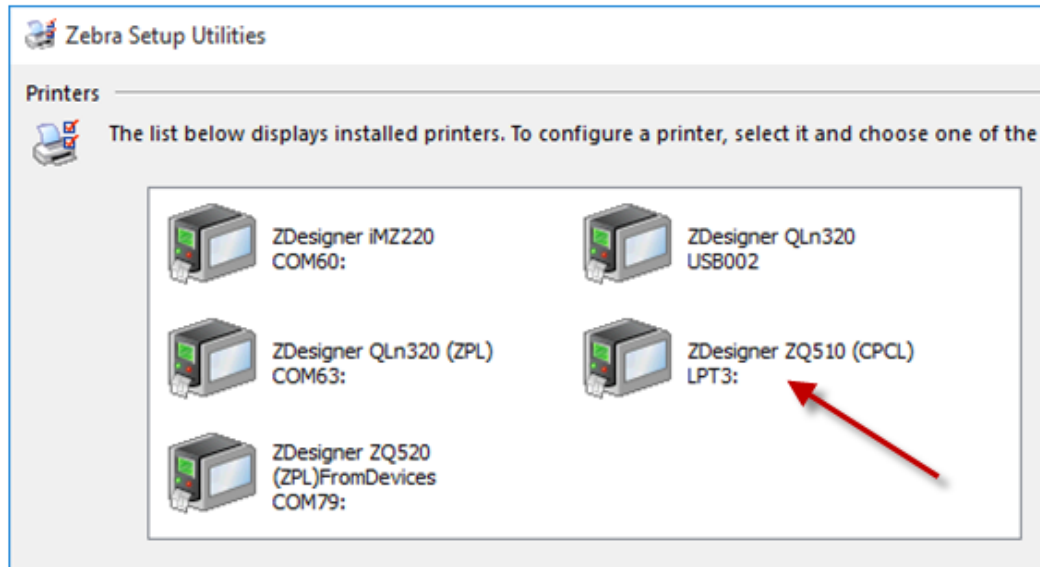
21. If this message displays, ignore and click Next



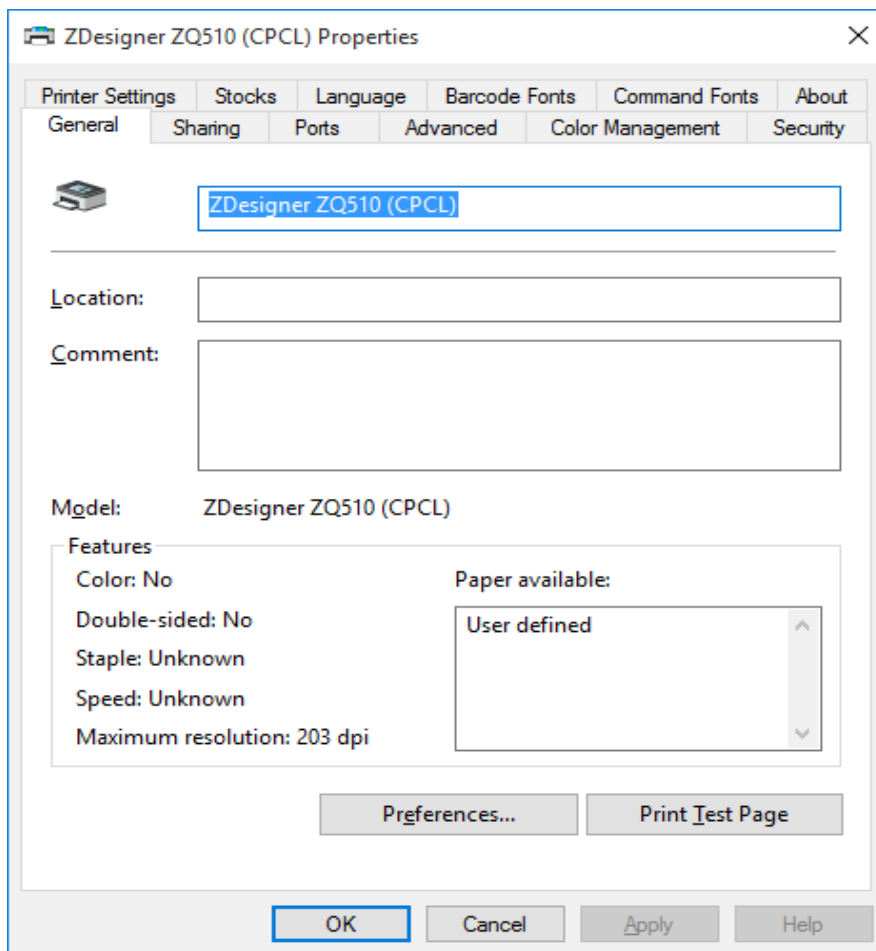
22. Click Ignore and then OK to the next message to complete the install.



Once completed the new printer will display in the ZSU.

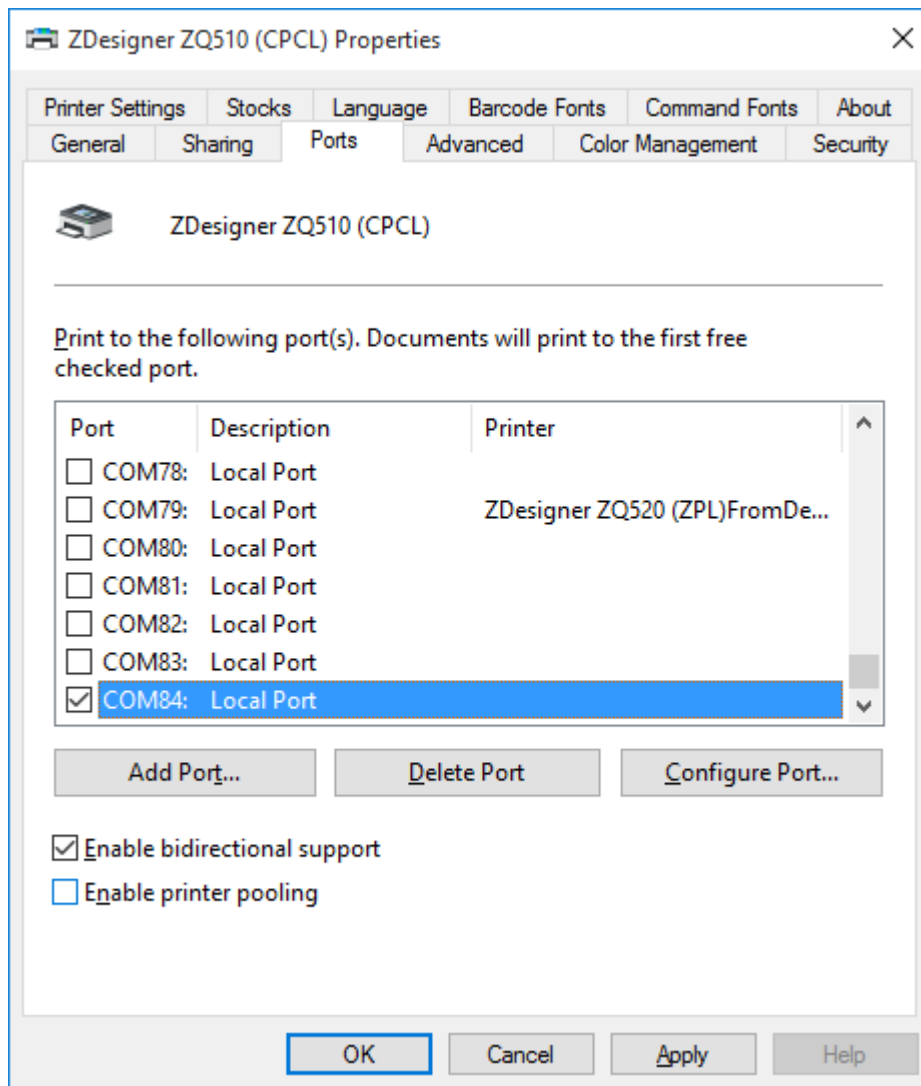


23. Re-open Devices and Printers then right click and choose Printer Properties

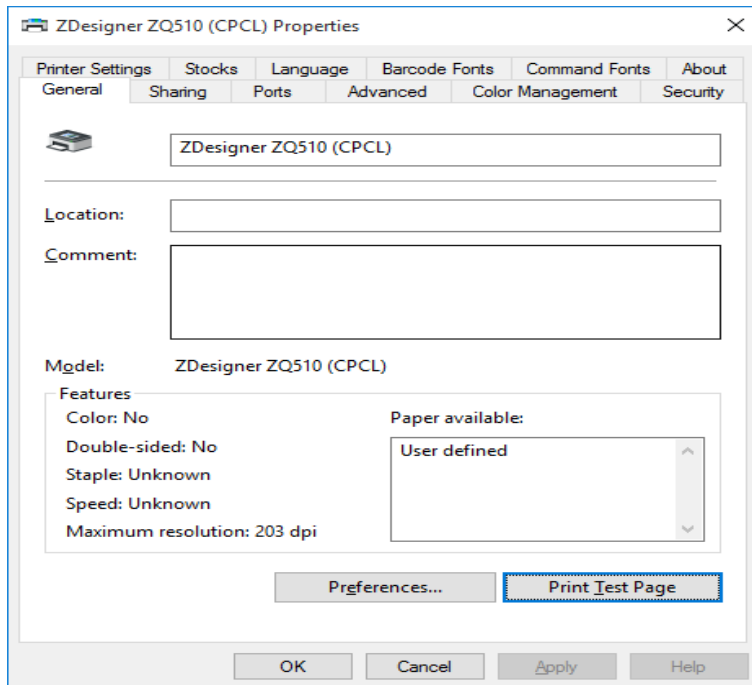


24. Choose Ports and confirm that the Outgoing Port created by Win 10, in this case COM 84, is now available to select.

25. Select the port and click Apply

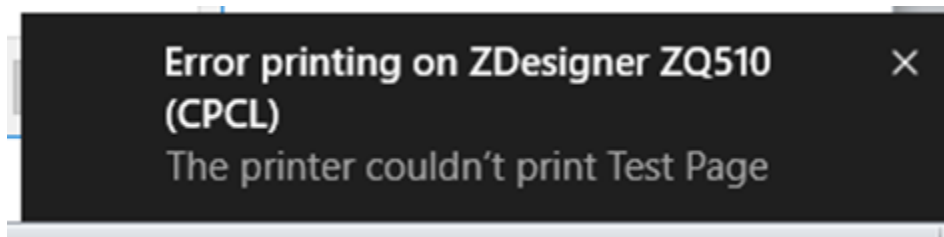


26. Click the General tab and select Print Test Page.



With the correct port selected, a Test Page prints with no error message.

If the correct Port is not available you cannot select a different COM port. When you attempt to print you will receive an Error printing from the operating system and from Devices and Printers...



Document Name	Status	Owner	Pages	Size	Submitted
Test Page		admin	1	3.58 KB	1:19:23 PM 12
Test Page	Error - Printing	admin	1	3.58 KB	1:18:43 PM 12

2 document(s) in queue

This means that your Windows 10 is missing a key update that corrected this Microsoft issue. We only have suggested steps available from the internet to help with the task of updating your Windows 10 operating system. You can try completing all steps in the link below to correct the Microsoft issues with the earlier version of the Windows 10 and ensure that your operating system is fully up to date.

SO8986 - Windows 10 Bluetooth pairing issue when using the Zebra Driver  
<https://km.zebra.com/kb/index?page=content&id=SO8986>

At this point it is not a Zebra or ZebraDesigner driver issue. This was a known MS operating system issue affecting all driver manufacturers that MS updates has resolved.

**One other note** - Make sure your mobile printer has not gone into a sleep mode. Sending a job when the printer is in sleep mode, also results in a temporary Error Printing message from the operating system that is corrected as soon as the printer is powered back up.