



Routing a Output File to a Text File in Windows from SAP

Revision 2

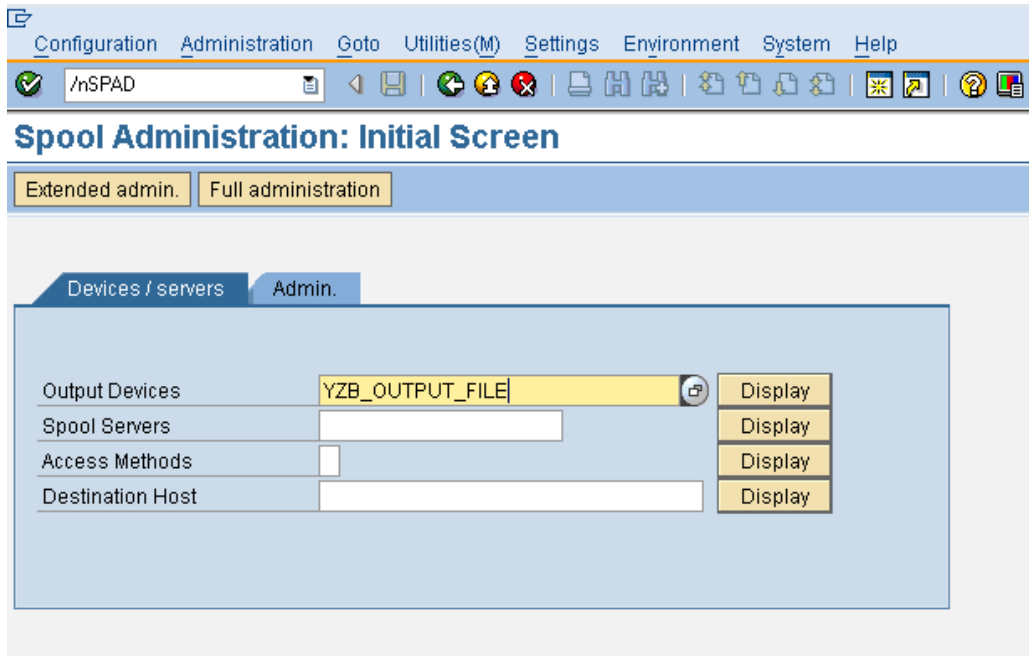
December 21, 2010

These instructions and images were written based off of Microsoft Windows XP Professional. Images and text may slightly differ with different Windows Products. This document details how to capture the output file using the Generic Text printer available in all versions of Microsoft Windows.

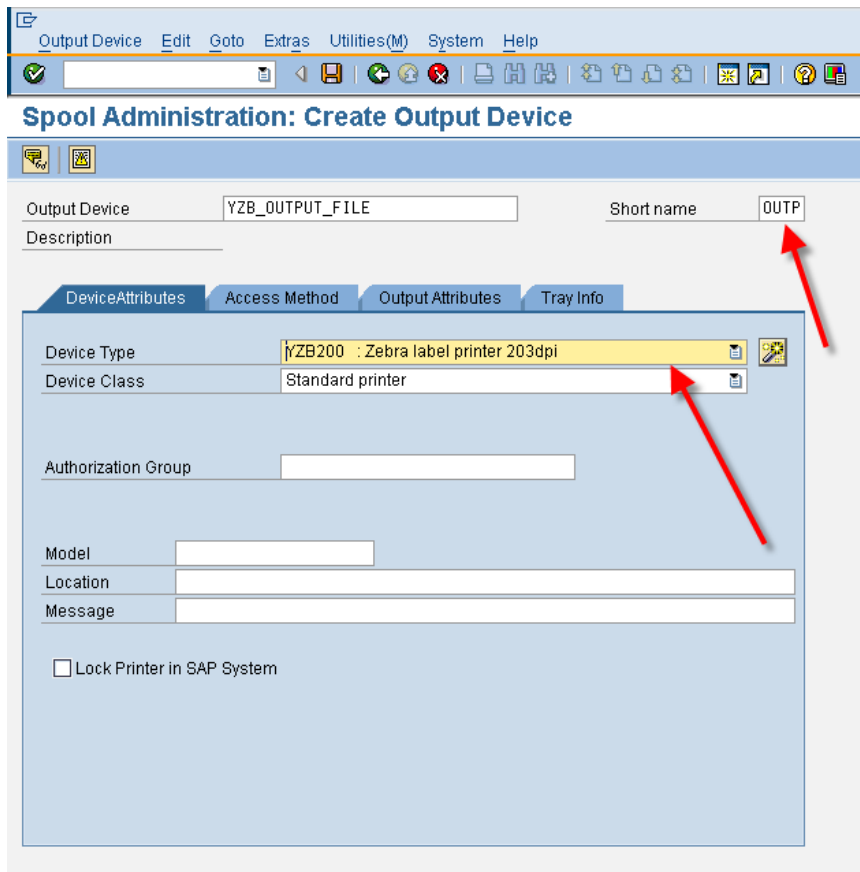
1. In SAP, navigate to the SPAD transaction

/nSPAD

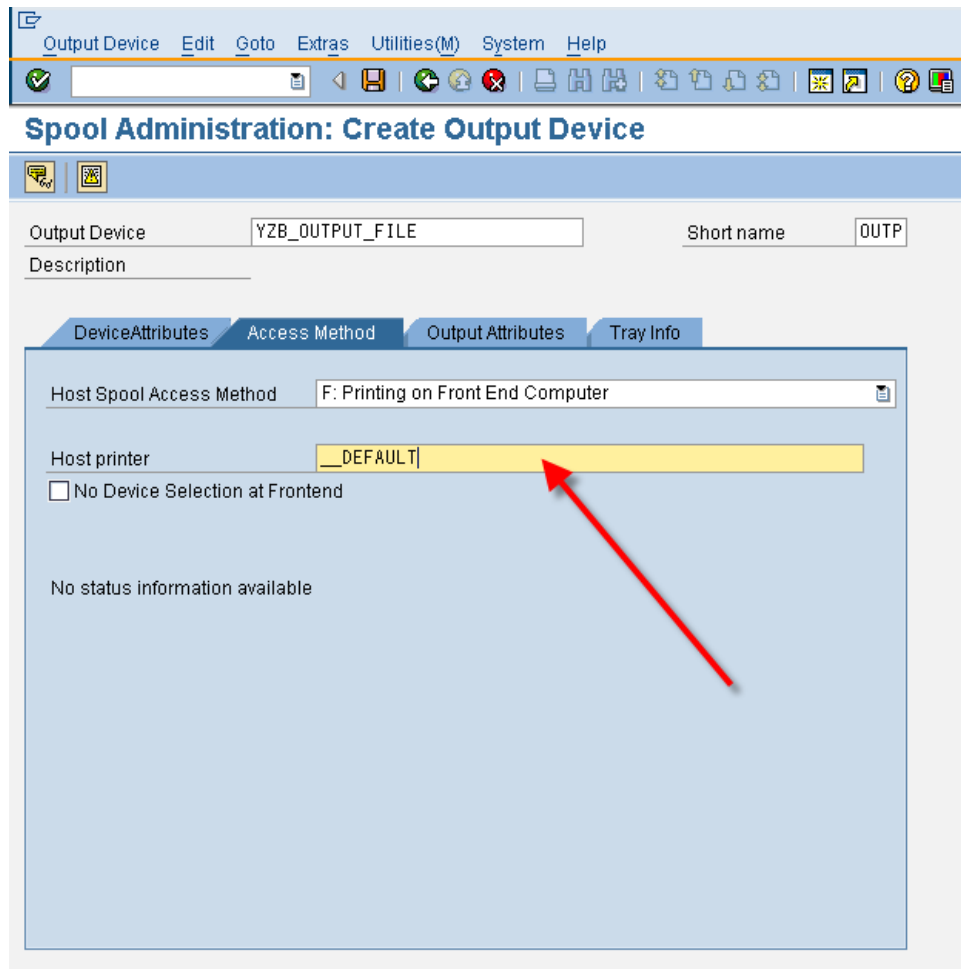
2. Create a output Device and name it.



3. Enter in a Short name and choose the appropriate Zebra Device type.



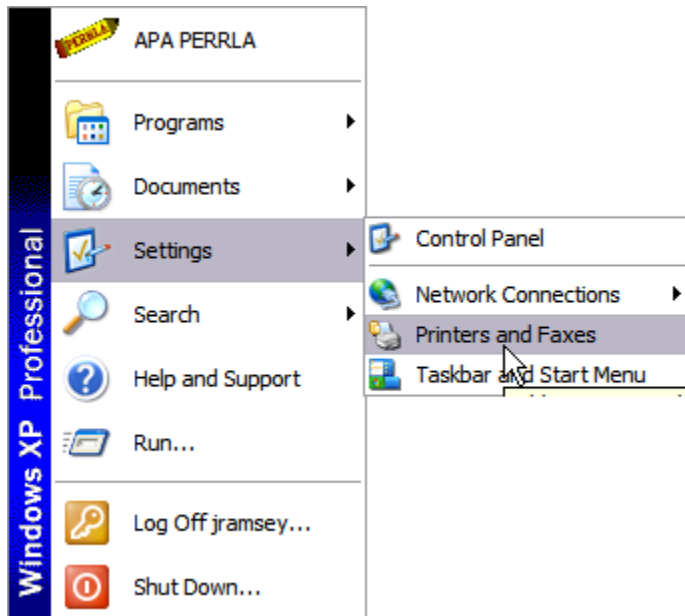
4. Choose the Access Method Tab



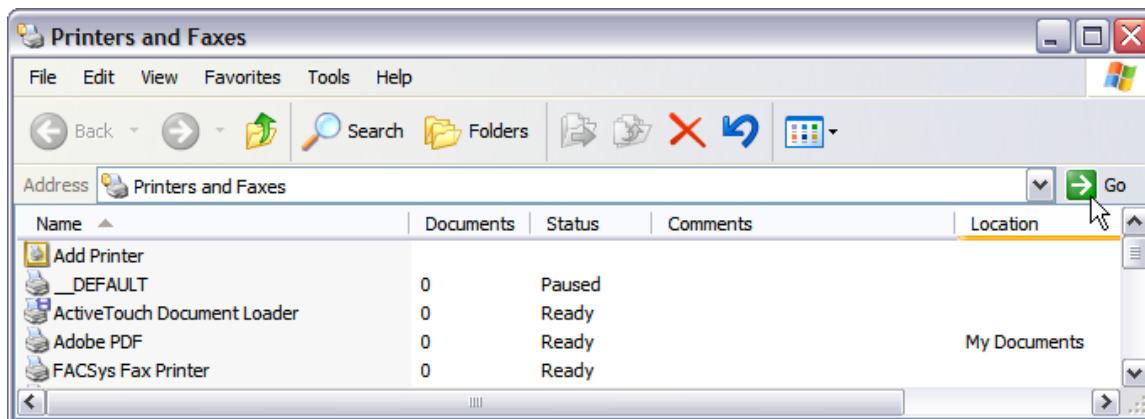
5. Press the Save Button 

6. You have now created an Output Device that will route to the default printer on your local Windows machine.

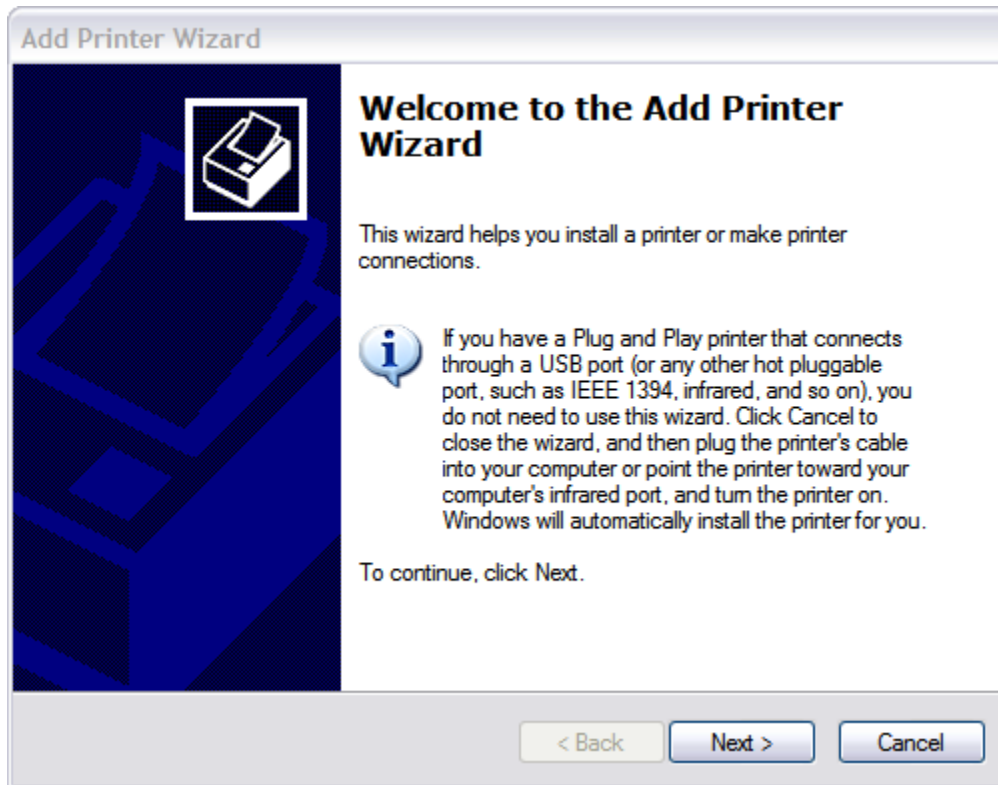
1. Click on **Start / Settings / Printers and Faxes**



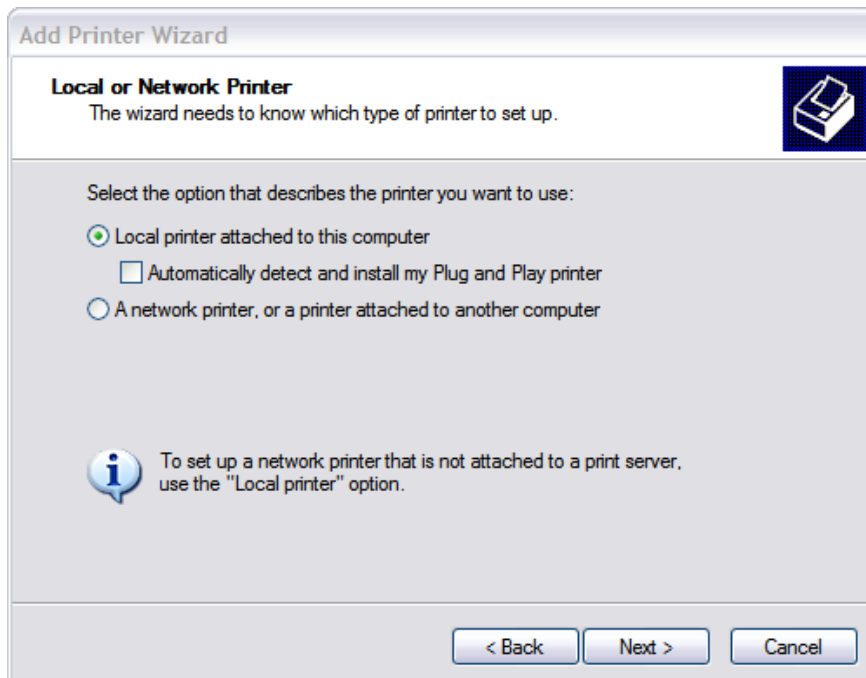
2. This will open the Printers and Faxes Window



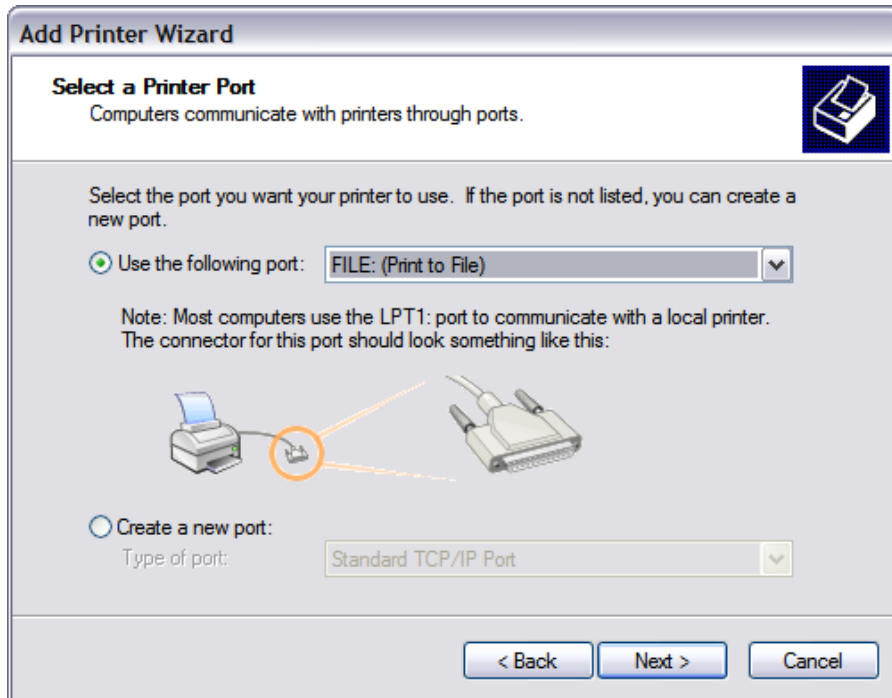
3. Double Click on **Add Printer**, then Click **Next**



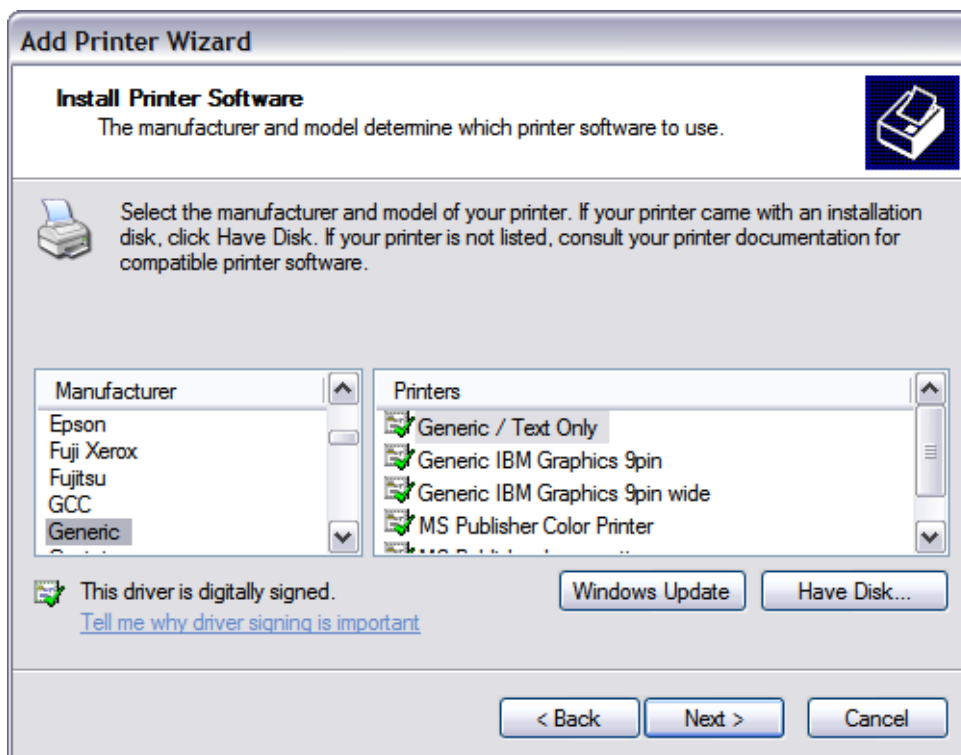
4. Choose **Local Printer** the Click **Next**



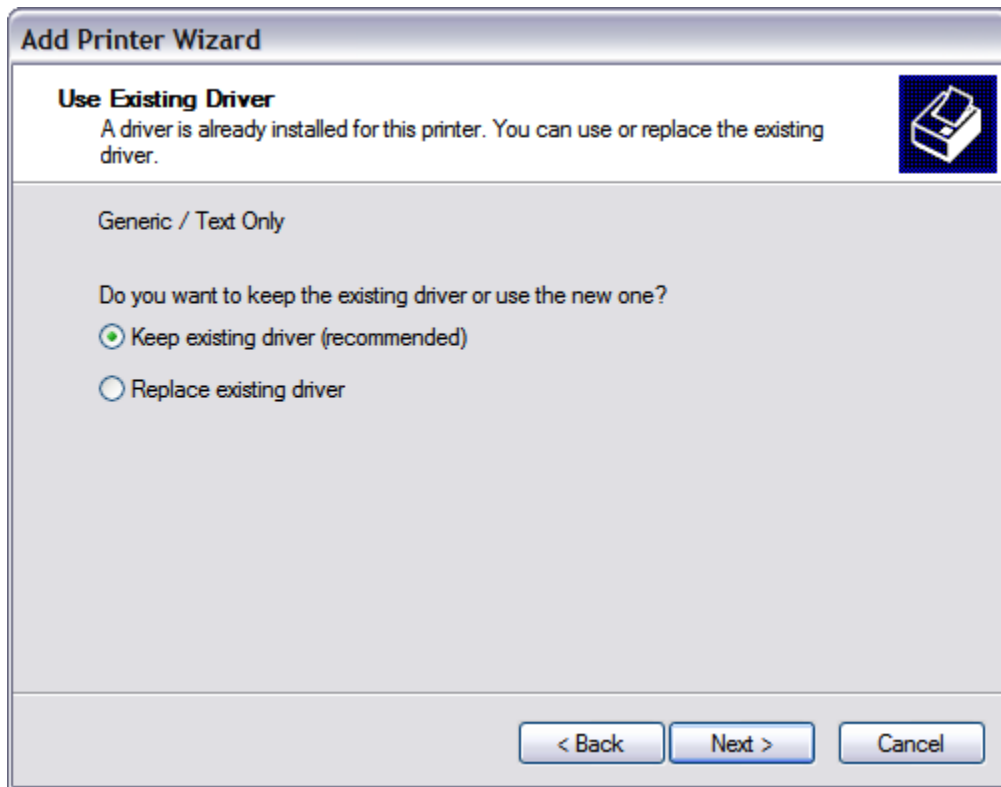
5. Choose Use the following port:: and choose **FILE: (Print to File)** in the drop down menu, then click **Next**.



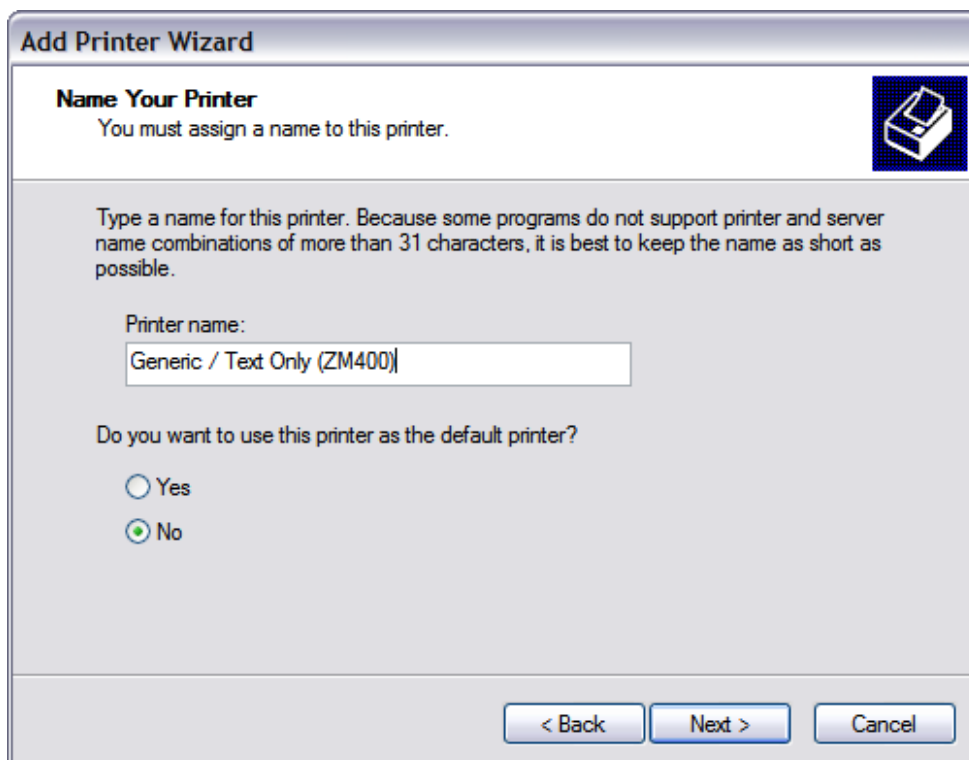
6. This opens the Install Printer Software window. Under manufacturer, choose Generic and under Printers, choose Generic / Text Only



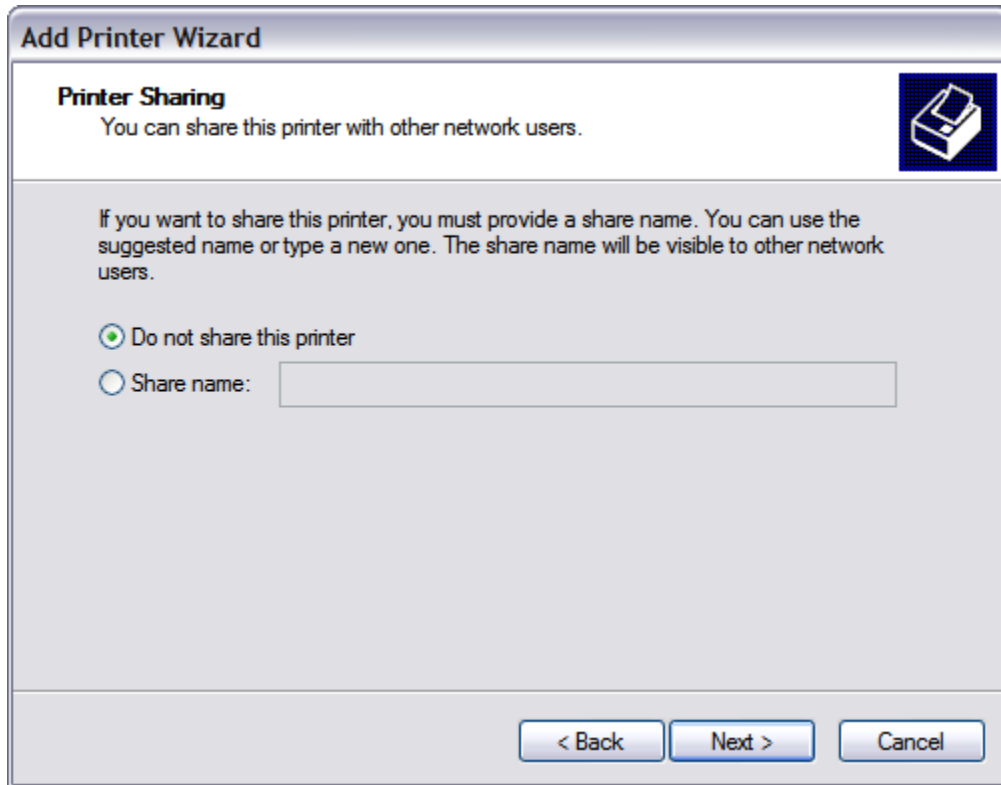
8. Click on the Keep existing driver, then Click **Next**



9. Add a printer name and make sure **NO** is chosen for this being a default printer, then Click **Next**

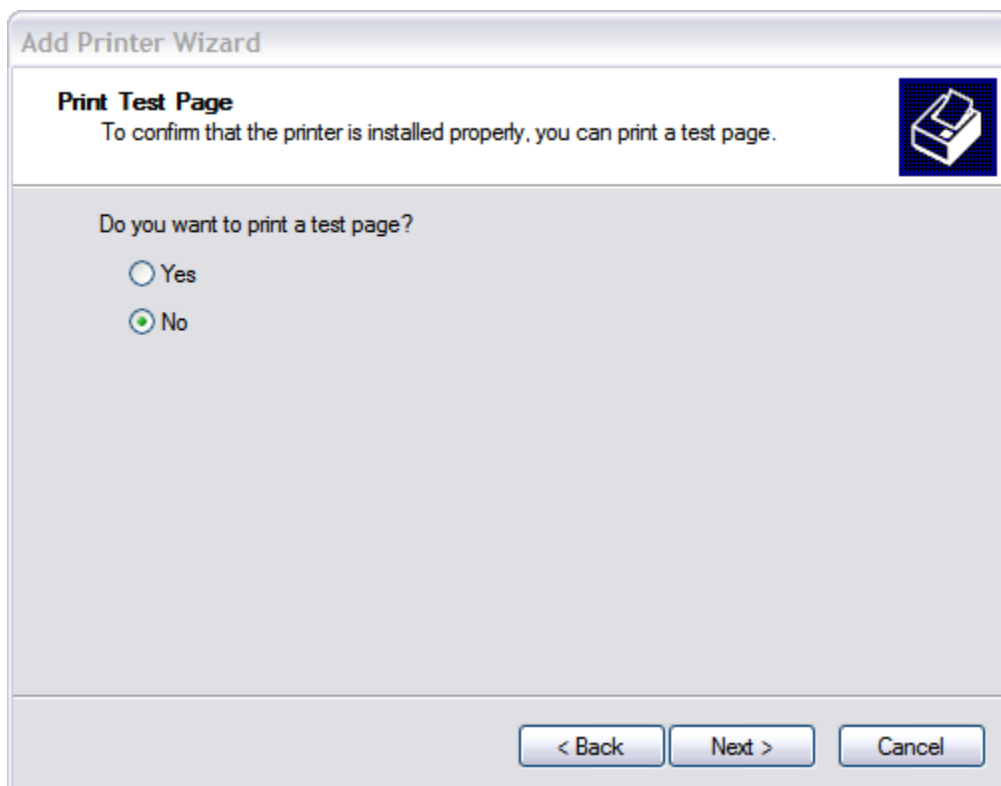


9. Insure that *Do not share this printer* is clicked, Click **Next**



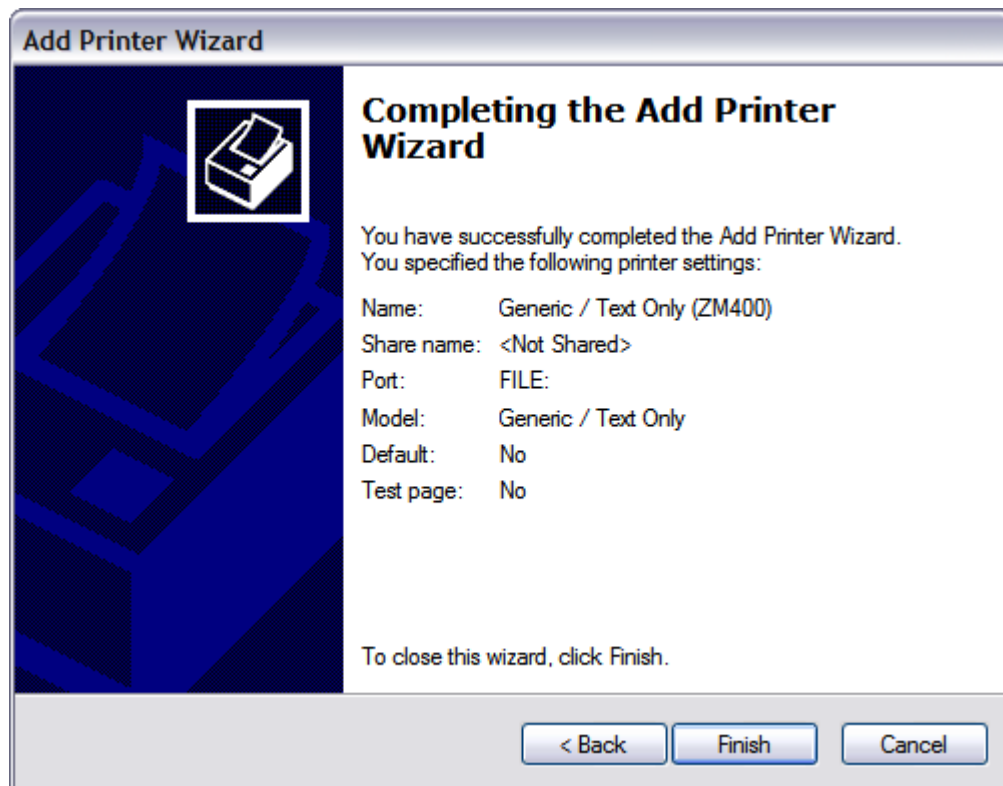
The screenshot shows the 'Add Printer Wizard' dialog box. The title bar reads 'Add Printer Wizard'. The main heading is 'Printer Sharing' with a sub-heading 'You can share this printer with other network users.' and a printer icon. Below this, a paragraph explains that a share name is required for sharing. There are two radio buttons: 'Do not share this printer' (which is selected) and 'Share name:' followed by an empty text input field. At the bottom, there are three buttons: '< Back', 'Next >', and 'Cancel'.

10. Insure that the No radio button is not checked and then Click **Next**.

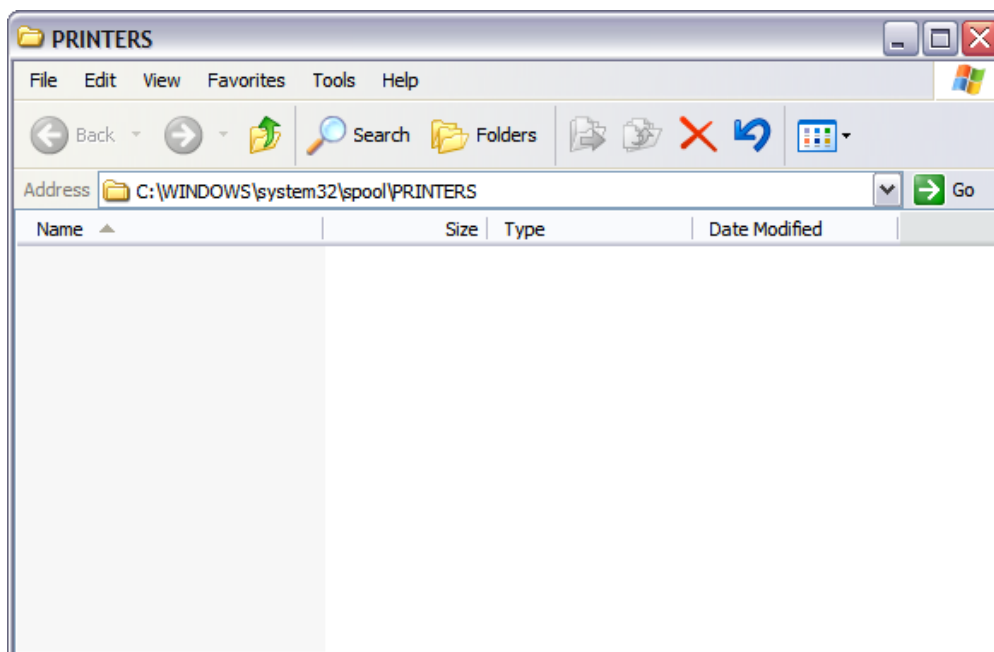


The screenshot shows the 'Add Printer Wizard' dialog box. The title bar reads 'Add Printer Wizard'. The main heading is 'Print Test Page' with a sub-heading 'To confirm that the printer is installed properly, you can print a test page.' and a printer icon. Below this, the question 'Do you want to print a test page?' is followed by two radio buttons: 'Yes' (which is not selected) and 'No' (which is selected). At the bottom, there are three buttons: '< Back', 'Next >', and 'Cancel'.

11. This completes your Generic Text Setup. Click **Finish**



12. The default URL where the file will be stored is:
C:\WINDOWS\system32\spool\PRINTERS



13. You are now ready to send a print job to this new printer. Be aware that you likely need to change the printer on your application to route through this new printer.