



Application Note: ZSN018081-V1

Date: 01/18/2008

**Product Affected:** ZBI 2.0 Key Manager & Downloader

**Tasks:**

1. **Install ZBI 2.0 Key Manager & Downloader**
2. **Activate purchased ZBI 2.0 keys using ZBI 2.0 Key Manager & Downloader**
3. **Use the ZBI 2.0 Key Manager & Downloader to discover ZBI printers**
4. **Activate/enable ZBI 2.0 on ZBI-Ready printers**
5. **View Remaining Printer Activations**

When purchasing a key or group of keys from the [www.zebrasoftware.com](http://www.zebrasoftware.com) web site, the ZBI 2.0 Key Manager & Downloader must also be downloaded. This utility is used to transfer the ZBI 2.0 keys onto ZBI 2.0 capable printers.

When purchasing a ZBI 2.0 Key kit, the ZBI 2.0 Key Manager & Downloader is included on the accompanying CD.

**Instructions:**

**1) 1. To install the ZBI 2.0 Key Manager & Downloader:**

**Note:** If installing over an existing installation of the Firmware Downloader, you should "remove" first, instead of "repair", and then install the new version after the old version has been removed.



Download the utility from [www.zebrasoftware.com](http://www.zebrasoftware.com) or, from the CD, double click on the setup.exe file. The Firmware Downloader Setup wizard will appear.



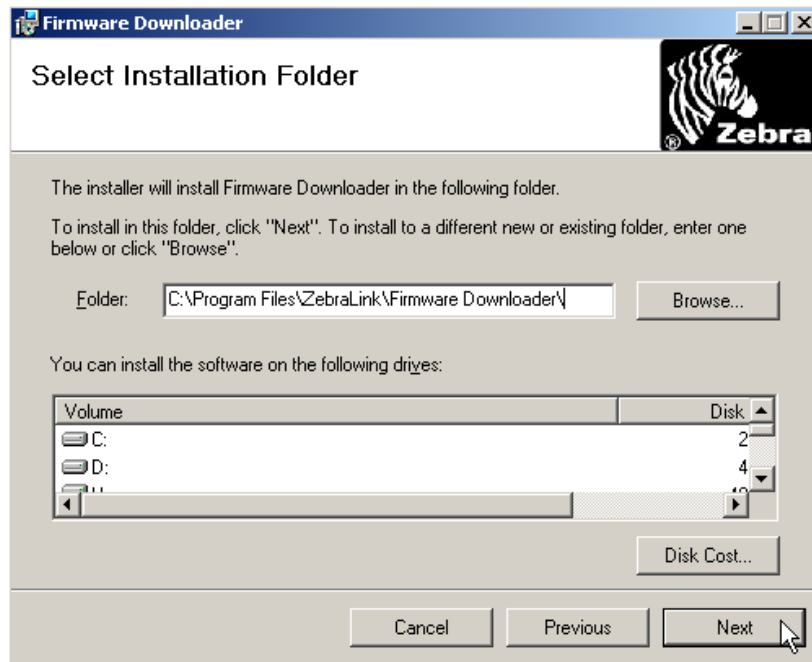
Click "Next" to continue.

Click the appropriate radio button to indicate acceptance of the End User License Agreement.

Click "Next" to continue.

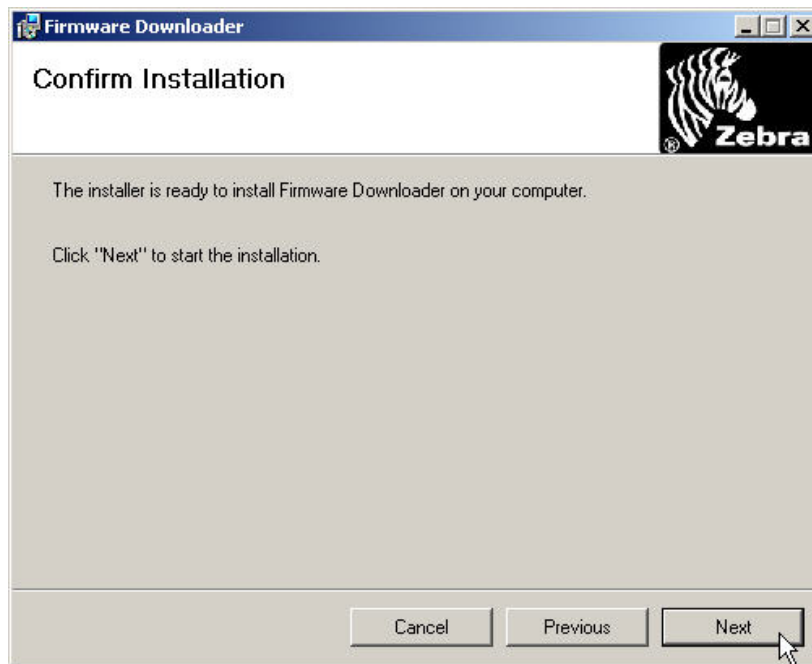


Select the correct folder in which to install the downloader. To view available disk space, click on the “Disk Cost” button.



Click “Next” to continue. A Confirm Installation Window appears.

Click “Next” to begin the installation.

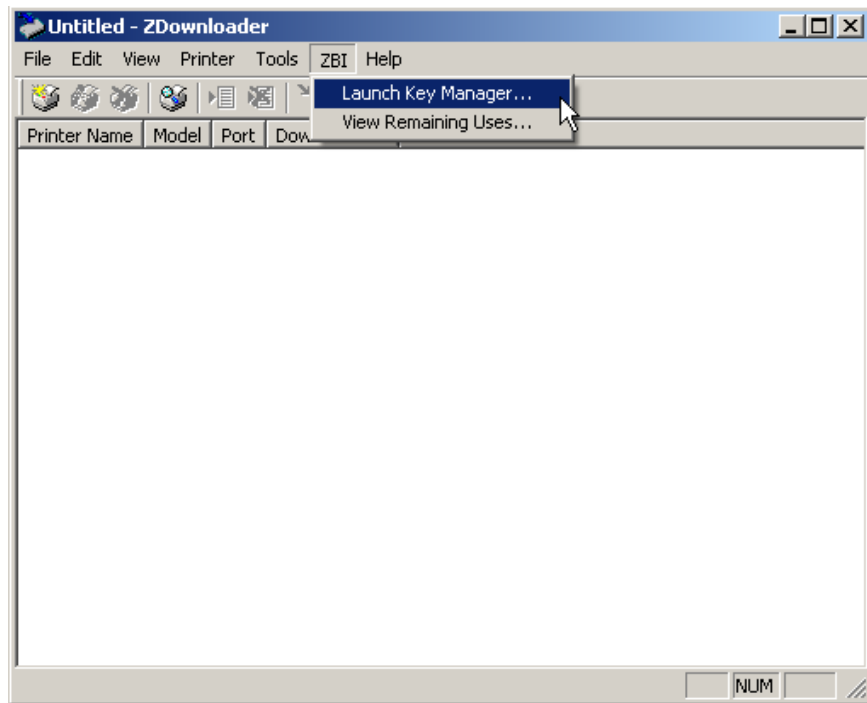


Click “Close” to exit after successful installation.

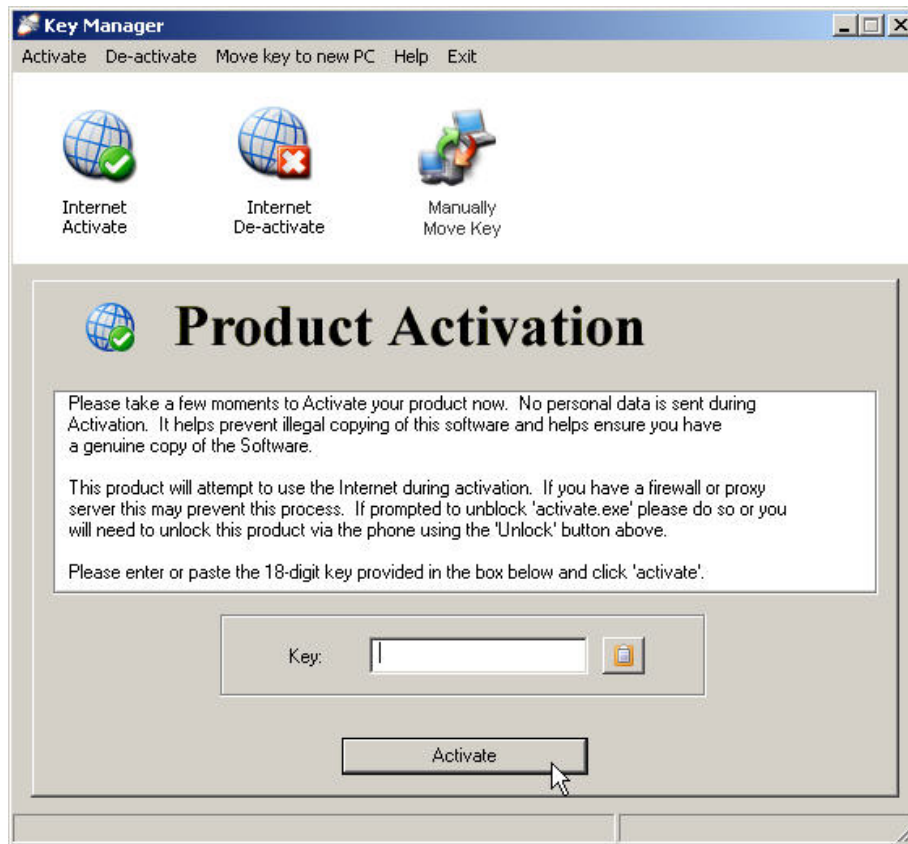
## 2) To activate a purchased ZBI 2.0 key using the ZBI 2.0 Key Manager & Downloader

From the Start Menu, select Program Files→ZebraLink→Firmware Downloader→FirmwareDownloader.

Once the Firmware Downloader is running, click the ZBI Menu Option along the top of the window. Select “Launch Key Manager”.



When the Key Manager Application comes up, enter the ZBI 2.0 Activation Key in the empty box marked Key:



Click “Activate” to cause the Key Manager to activate the Key. The Key Manager will attempt to connect to a web server to authenticate the Key. If successful, the Key Manager will display the message “Product Successfully Activated”.

If the attempt to authenticate the Key is not successful, the Key Manager will report that it was not able to contact the authentication server.

**Note:** In order for ZBI Keys to be available for distribution to printer, they must first be activated via the Key Manager. This authenticates them for use. Each Key can only be authenticated once. Performing this step requires an internet connection. Once the Keys have been authenticated they can be distributed to printers. It is not necessary for the Key Manager to connect to the authenticating web server while distributing ZBI keys to printers.

When the key has been successfully activated, the message below will appear:



### 3) To Discover Printers Using the ZBI 2.0 Key Manager & Downloader


#### Add Printers to the List


There are two ways to add printers to the list: Auto-Detect and Manual.

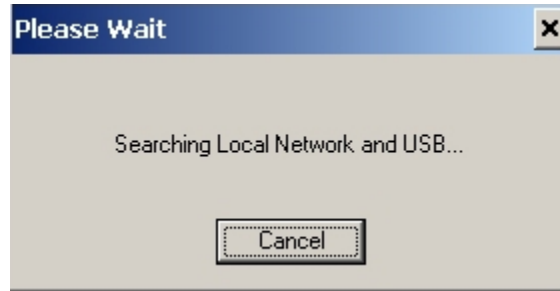
If your printer is connecting via an USB or an IP Ethernet interface, use Auto-Detect to add the printer(s).

If your printer is connecting via the serial or parallel interfaces, or is not detected by using the Auto-Detect method, use the Manual add method.

#### Auto-detect Printers

**Note:** When using Microsoft® Windows Vista®, printers may not be discovered over a network using the Printer → Auto-Detect  function; they must be added manually (see below).

To Auto-Detect printers connected via the USB or IP Ethernet interfaces, press the “Auto-Detect” Toolbar button  and choose the menu option “Printer→Auto-Detect” or right click on the list and select “Auto-Detect Printers”. Once you start an Auto-Detect, the dialog box shown below will appear.




**Auto-Detect Dialog Box**

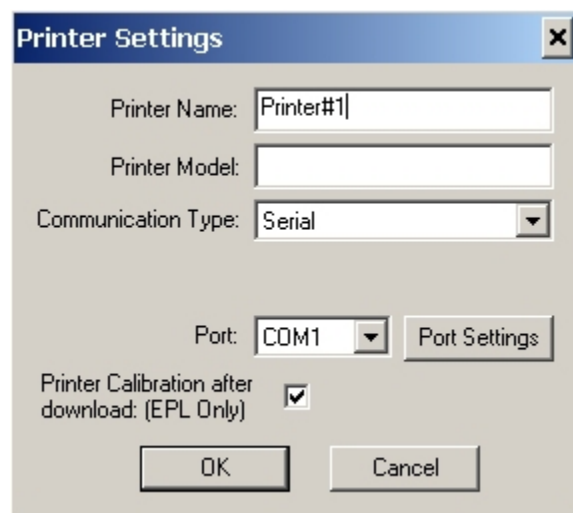
You can cancel Auto-Detection at any time by pressing the Cancel button.

Once the Auto-Detection is complete, the printers detected will be added to the printer list.

**NOTE:** Ethernet connected printers are detected by the application broadcasting a UDP packet out onto the network. UDP port number 4201 is used for the discovery process. Some networks filter out UDP packets. This means that it may not be possible to detect all printers on your network. See your network administrator for more information. If you are not able to Auto-Detect your network printers, follow the manual add instructions in the next section.

### Manual Add Printers

To manually add a printer to the list press the “Add Printer” toolbar button , choose the menu options “Printer→Add...” or right click on the list and select “Add Printer...”. When you add a printer the dialog shown below appears.

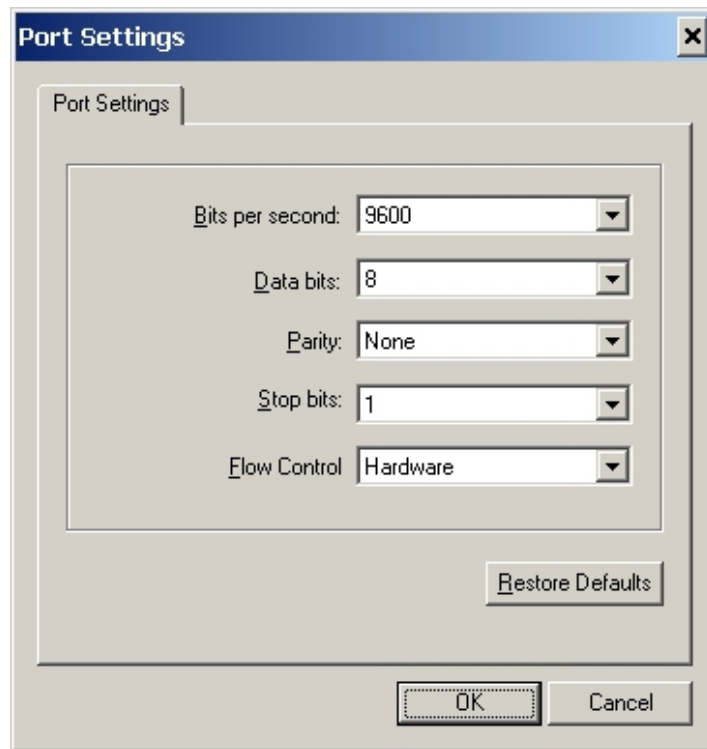


**Configuring a Serial Printer**

Enter the Printer Name, Model, Communication Type, etc for the printer you wish to add.

### Adding a Serial Printer

The available Serial ports will be shown in the Port combo box. Select the serial port to which the printer is connected. The computer's serial port settings must match the printer's serial port settings. The printer's serial port settings can be viewed by performing an AutoSense on the printer (see the user's manual for details) and reading the Dump Mode status labels serial configuration data (example: 9600,N,8,1 which matches the Port Setting displayed below). Configure the port settings by pressing the Port Settings button. The dialog shown below will appear.



### Serial Port Settings

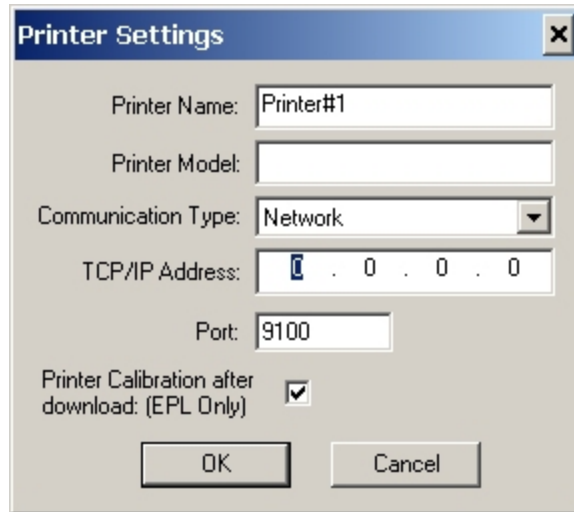
### Adding a Parallel Printer

To add a parallel printer, select the Parallel Communication Type. The available parallel ports will be shown in the Port combo box. Select the port to which the printer is connected.



## Adding a Network Printer

To add an Ethernet printer, select the Network Communication Type. Then enter the TCP/IP address and the communications port number for the printer. Press the printer's (or the PrintServer Ethernet adapter's) networking configuration status button next to the ethernet interface on the printer and status label will print.



The image shows a 'Printer Settings' dialog box with the following fields and options:


- Printer Name: Printer#1
- Printer Model: (empty)
- Communication Type: Network (dropdown menu)
- TCP/IP Address: . 0 . 0 . 0 (with a small icon on the left)
- Port: 9100
- Printer Calibration after download: (EPL Only)
- Buttons: OK and Cancel

### Configuring a Network Printer

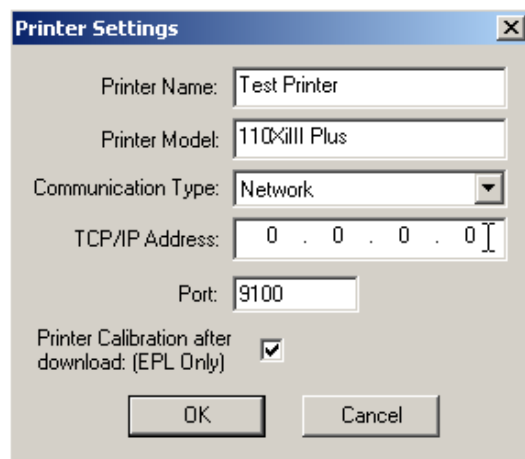
## Adding a USB Printer

USB printers can only be added by using Auto-Detect. All printers connected via the USB interface will have the list designation of USB. The program can support as many USB printers as the computer can support. The maximum number of USB devices that can be supported by the computer (typically) would be 255.


## Modify Discovered Printers in the List

To change printer settings for a printer that is already in the list, select the printer and press the “Modify Printer” toolbar button , select the “Printer→Modify...” menu option, or right click on the printer in the list and select “Modify Printer...”. The Printer Settings dialog will appear as shown in Figure 3. If the printer you are modifying is a USB printer the printer settings dialog will resemble the dialog box shown below.

**Note:** When “Print Configuration Label after Download” is selected, the printer will perform sensor calibration then print a configuration label. This ensures that the media sensor is calibrated correctly as a firmware download will overwrite any existing values.





## Delete Discovered Printers from the List

To delete printers from the list, press the “Delete Printer(s)” toolbar button , select the “Printer→Delete” menu option, or right click on the printer(s) to be deleted and select “Delete Printer(s)”.

## Print the Test Page on a Discovered Printer

Below are the three ways in which a Test Page can be printed;

Select the Printer(s) desired and press the “Print Test Page” toolbar button  or .

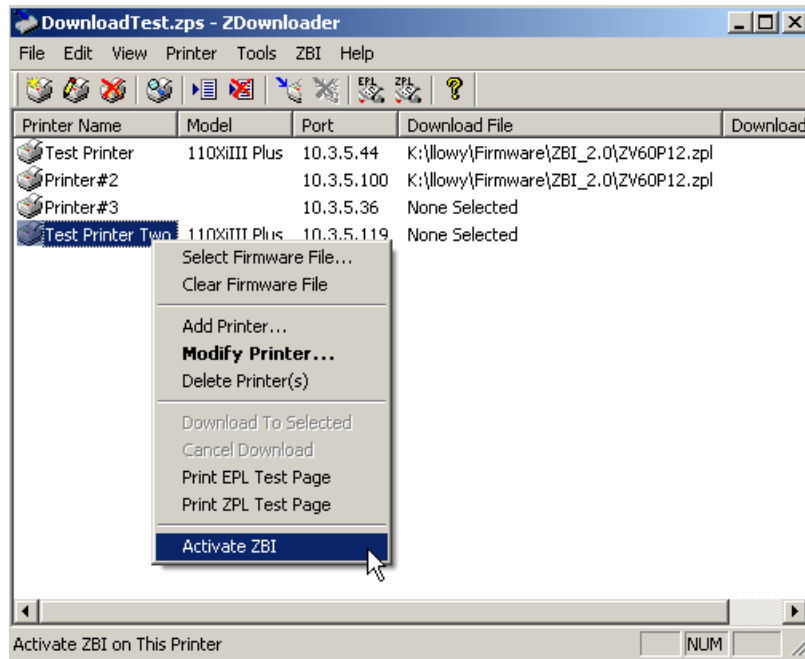
Select the menu option “Printer→Print EPL Test Page” or “Printer→Print ZPL Test Page.”

Right click on the selected printers and select “Print EPL Test Page”, or “Print ZPL Test Page”.

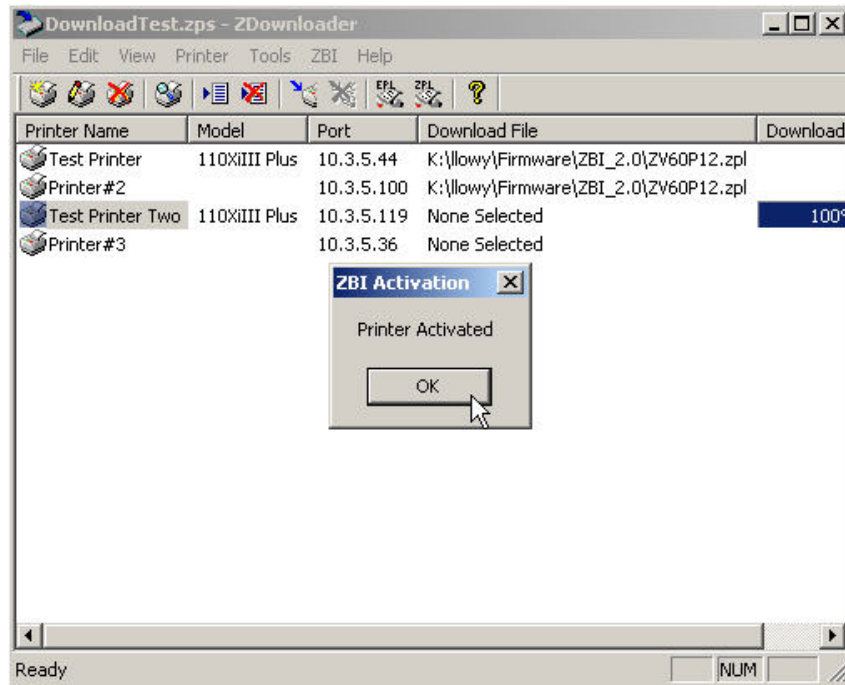
#### 4) Activate/enable ZBI 2.0 on ZBI 2.0 capable printers

**Note:** Prior to activating/enabling a ZBI 2.0 capable printer, the firmware version displayed on the front panel of the printer will end in a “Z”, ie: V60.16.0Z or V53.16.0Z. Once a key is present on the printer, (it has been activated/enabled for ZBI 2.0) the firmware version on the front panel will no longer display a “Z” at the end, ie; V60.16.0 or V53.16.0.

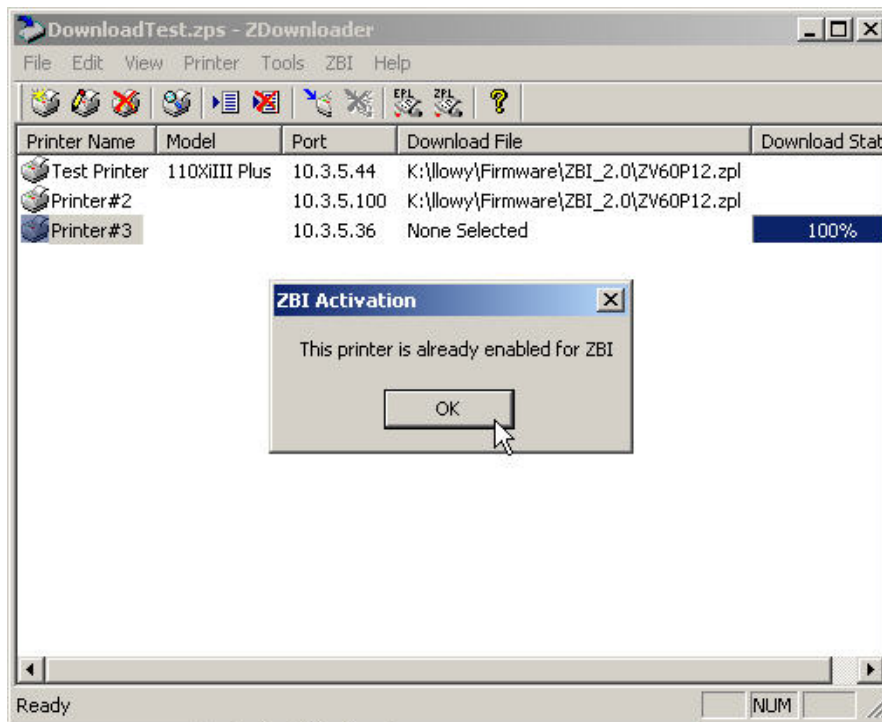
To activate a printer in the list, after the printer list is complete, right click on the desired printer or printers to be activated and select “Activate ZBI”.



The following dialog box appears when the activation is successful:

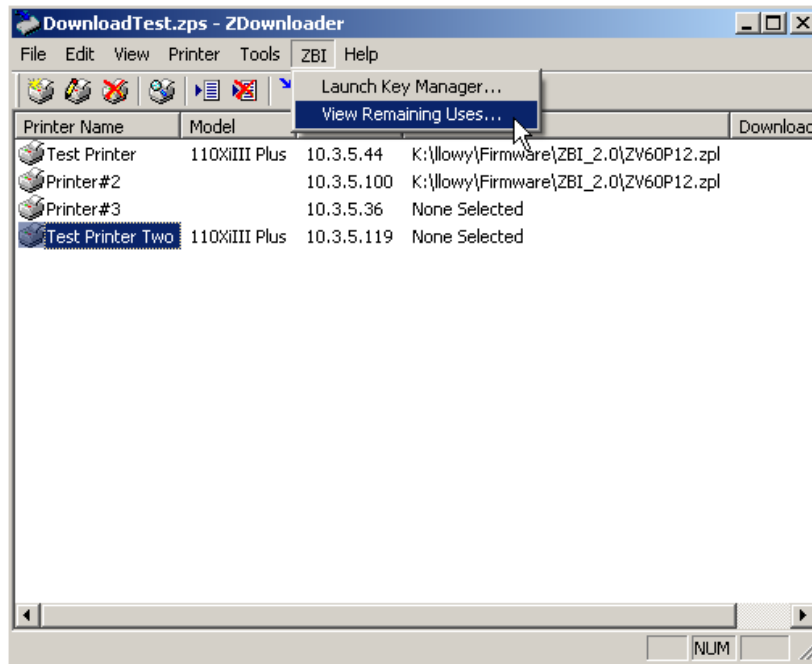


If ZBI 2.0 has already been activated, or enabled, the following dialog box will appear:



### 5) View Remaining Printer Activations

To view the number of purchased printer activations remaining, click on the ZBI menu option and select “View Remaining Uses”



The number of remaining activations will appear in a dialog as shown below:

