



## Zebra Technologies

# Cutter Catch Tray Option Installation Instructions

This kit includes parts and documentation necessary to install the cutter catch tray on the 105*Se*, *SL*, *XiII*, *XiIII*, *XiIIIPlus* Series, and R-140 Printers. Read these instructions thoroughly before attempting to install this option.

Adding the cutter catch tray to these printers requires the assembly, installation, and adjustment of several parts and should be performed by a qualified service technician.

The service technician must follow the step-by-step procedures provided in these instructions. Figures 2 and 3 illustrate a properly positioned and adjusted cutter catch tray.

## Reference Materials

31460L <i>S</i> -Series User Guide	38452L <i>S</i> -Series Maintenance Manual
11342L 105 <i>SL</i> User Guide	32056L 105 <i>SL</i> Maintenance Manual
13372 105 <i>SL</i> User Guide (CD)	31560 <i>S</i> -Series Maintenance Manual (CD)
48460L <i>XiII</i> Series User Guide	48452L <i>XiII</i> Series Maintenance Manual
11992L <i>XiIII</i> Series User Guide	48152L <i>XiIII</i> Series Maintenance Manual
13383L <i>Xi IIIPlus</i> Series User Guide	13185L 110 <i>XiIIIPlus</i> Maintenance Manual
48040L R-140 User Guide	48560 <i>Xi</i> Series Maintenance Manual (CD)
13371 <i>Xi</i> Series User Guide (CD)	(includes 13185L, 48152L, and 48452L)

## Tools Required



Phillips Screwdriver Set

Adjustable Wrench

## Kit List

Kit	Printer
47459	90 <i>XiII</i> , 90/96 <i>XiIII</i> / <i>XiIIIPlus</i>
48459	105 <i>Se</i> , <i>SL</i> and 140 <i>XiII</i> , <i>XiIII</i> , <i>XiIIIPlus</i> , and R-140
46459	170 <i>XiII</i> , <i>XiIII</i> , <i>XiIIIPlus</i>
22459	220 <i>XiII</i> , <i>XiIII</i> , <i>XiIIIPlus</i>

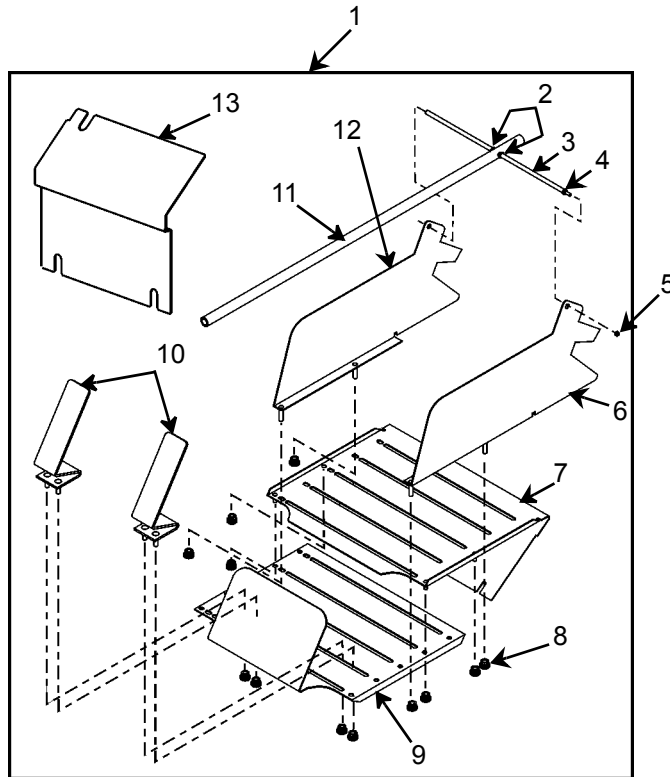
## Cutter Catch Tray Option Installation Instructions

### Parts List

Table 1. Parts

✓	Item	Part Number	Description	Qty
	1	N/A	Cutter Tray Assembly	1
	2	<b>01666</b>	O-ring	2
	3	N/A	Pivot Shaft (90/96)	1
		N/A	Pivot Shaft (105 and 140)	1
		<b>46319</b>	Pivot Shaft (170)	1
		N/A	Pivot Shaft (220)	1
	4	<b>Q10018</b>	E-ring	1
	5	<b>01822</b>	Nut, 4-40	1
	6	<b>30318</b>	Adjustable Guide	1
	7	N/A	Upper Cutter Tray (90/96)	1
		N/A	Upper Cutter Tray (105 and 140)	1
		<b>46315</b>	Upper Cutter Tray (170)	1
		N/A	Upper Cutter Tray (220)	1
	8	<b>01815</b>	Knurled Nut, 6-32	12
	9	N/A	Lower Cutter Tray (90/96)	1
		N/A	Lower Cutter Tray (105 and 140)	1
		<b>46316</b>	Lower Cutter Tray (170)	1
		<b>22189</b>	Lower Cutter Tray (220)	1
	10	<b>01813</b>	Stop Guide	2
	11	<b>01846</b>	Anti-Wind Tube	1
	12	<b>30317</b>	Stationary Guide	1
	13	<b>47342</b>	Front Cover Bracket (90/96)	1
		<b>48342</b>	Front Cover Bracket (105 and 140)	1
		<b>38342</b>	Front Cover Bracket (170)	1
		<b>22342</b>	Front Cover Bracket (220)	1
<b>N/A—Not available as a separate service item.</b>				

Figure 1. Catch Tray Assembly — Width and Length Adjustments



## Install Instructions

1. Turn Off (●) the printer and remove the AC power cord and all data cables.
2. Open the media door.

### Install the Catch Tray and Front Cover Bracket



**Note** • If the printer has a rewind option installed, the front cover bracket, mentioned in steps 1 and 2 below and shown in Figure 3, is not present. A curved rewind plate is installed instead. In step 3, this rewind plate is replaced by the front cover bracket, included in this kit.

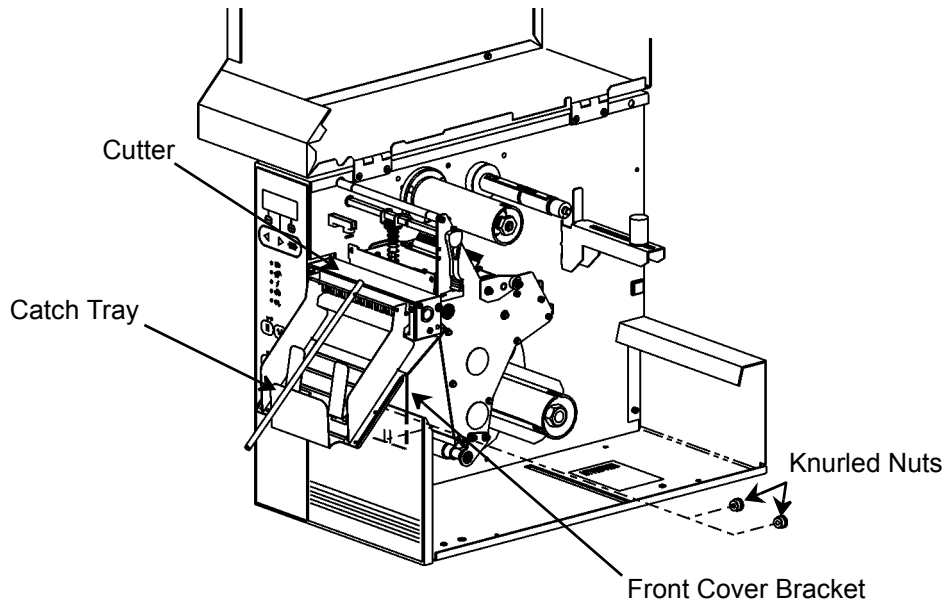


**Note** • If your printer has no factory options but does have a field-installed cutter, use the front cover bracket that comes with the printer.

**Note** • If your printer has a cutter, but you want to print and rewind, disable the cutter and use the curved rewind plate with the cutter locating tabs.

1. Refer to Figure 2. With the media door open, locate the two knurled nuts securing the front cover bracket against the inside wall of the printer's lower front cover. Remove these two knurled nuts and the front cover bracket.

**Figure 2. Install the Cutter Catch Tray Assembly (105SL shown)**



2. Install the cutter catch tray assembly and the front cover bracket onto the mounting screws. Reinstall the knurl nuts.

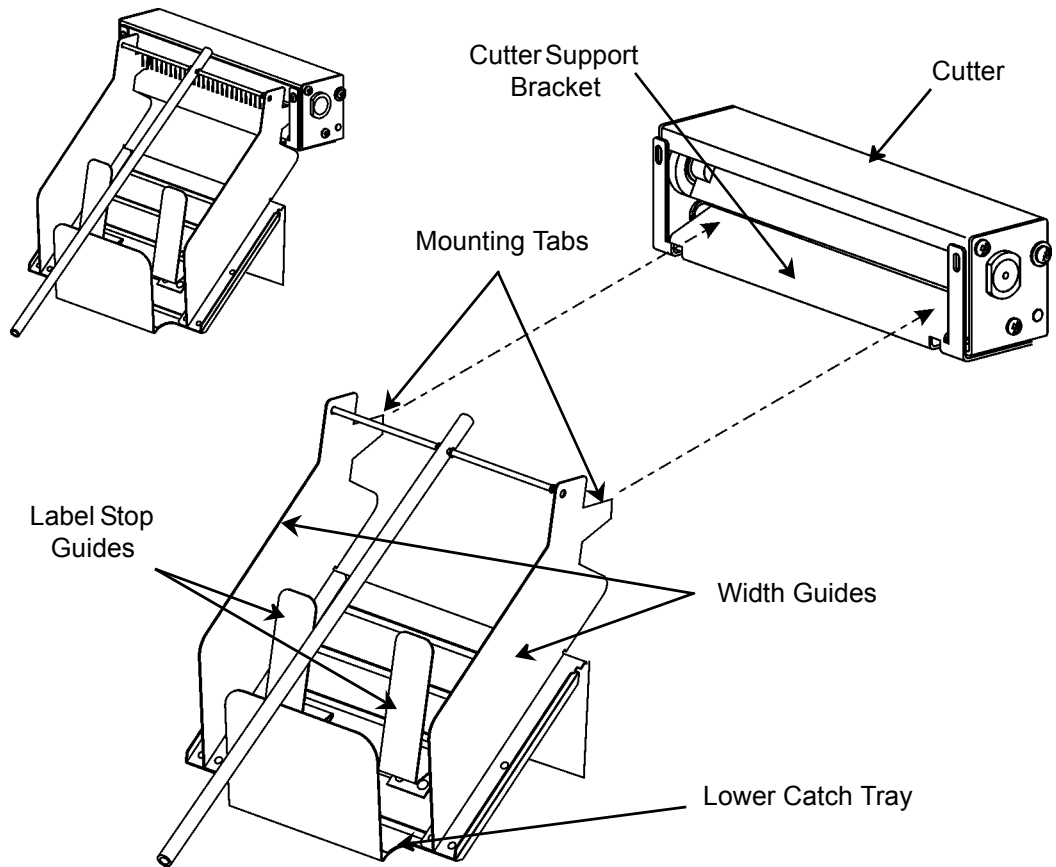


**Note** • The mounting tabs on the stationary and adjustable width guides must fit inside the cutter mechanism, and should rest on the angled surface of the cutter support bracket.

3. Close the media door.
4. Reinstall the AC power cord and turn On (I) the printer.
5. Feed and cut one label and place it in the catch tray.

### Adjust the Catch Tray

**Figure 3. Install the Cutter Catch Tray Assembly**



Refer to Figure 3.

The catch tray can be disassembled and reassembled to accommodate various label lengths and widths. The specific label length and width will determine which adjustment is required.

1. If the initial assembled length of the tray is too long, position the two label stop guides where needed to hold the labels.
2. If the label is longer than the initial assembled length of the tray, remove the two label stop guides, remove the eight remaining knurled brass nuts, extend the lower cutter tray as needed, and then reassemble the catch tray.
3. If the label is long and has residual curl, attach the shaft assembly. (Refer to Install the Shaft Assembly on page 6)
4. If labels of different lengths are printed from time to time, adjust the catch tray for the longest label. When shorter labels are printed, install the label stop guides.
5. Adjust the positions of the left and right width guides so they are close to, but not touching the labels.

## Cutter Catch Tray Option Installation Instructions



**Note** • During reassembly of the catch tray, be sure the mounting tabs on the stationary and adjustable width guides fit inside the cutter mechanism and rest on the angled surface of the cutter support bracket. The width guides should also rest on the surface of the front cover bracket as shown in Figure 2.

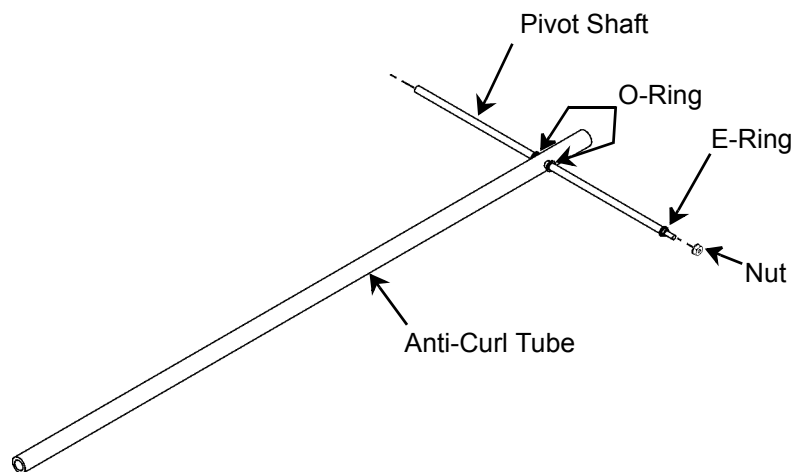
6. Feed and cut several labels to insure proper stacking operation of the label catch tray.

### Install the Shaft Assembly

Refer to Figure 4.

The shaft assembly consists of a pivot shaft mounted horizontally on the catch tray assembly and an anti-curl tube used as a weight to hold down the labels and remove any residual curl.

**Figure 4. Anti-Curl Shaft Assembly**



1. Remove the nut from the threaded end of the pivot shaft.
2. Refer to Figure 3. Insert the opposite end of the pivot shaft in the opening at the top of the stationary guide.
3. Insert the threaded end of the pivot shaft into the adjustable guide.
4. Reinstall the nut onto the threaded end of the pivot shaft and tighten.
5. Position the anti-curl tube so it rests on the center of the labels. Disassemble and reassemble the catch tray as necessary to ensure the lower end of the anti-curl tube rests on the labels as they are cut and stacked.