

Command Line Dos to USB

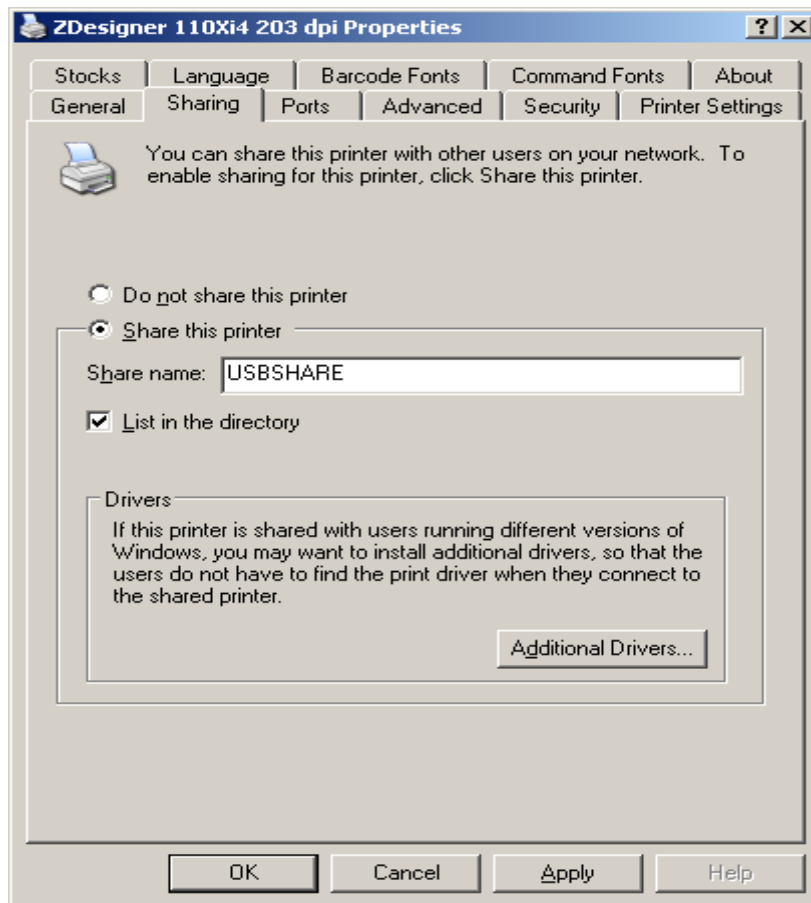
To print to a USB device from DOS, perform the following:

1. Install a Windows USB driver for the USB Zebra printer of your choice.

Download driver from:

http://www.zebra.com/id/zebra/na/en/index/drivers_downloads/drivers.html

2. Amend the printers SHARING options and give the driver a sharing name.



3. Create a text file containing printer programming code.

4. Open the DOS prompt (Start > Run > cmd > Press OK)

5. At the DOS prompt, set the drive and directory in DOS to the location of FILE.TXT

6. Type: COPY FILE.TXT \\COMPUTERNAME\USBSHARE

After pressing the enter button, the contents of the FILE.TXT would then be sent to the USB printer.