



A Zebra Technologies White Paper

Mapping Font Location on a Zebra Printer – SAP

Contents

Overview 3

Feedback 3

Instructions..... 4

Overview

This white paper contains instructions on how to map a font location on a Zebra printer using SAP. Specifically, this document details how to change what memory location the True Type font is being stored on in the Zebra Printer. You will be guided through launching SPAD for your device, navigating to the “Printer init” file, and finally modifying the correct font locations in the “Printer init” file.

This file is available in a Chinese-language version [here](#).

中文版本可在[这里](#)找到。

This file is available in a Spanish-language version [here](#).

Este archivo esta disponible en Español - oprima [aquí](#).

This file is available in a Portuguese-language version [here](#).

Este ficheiro está disponível na versão Portuguesa, clique [aqui](#).

Feedback

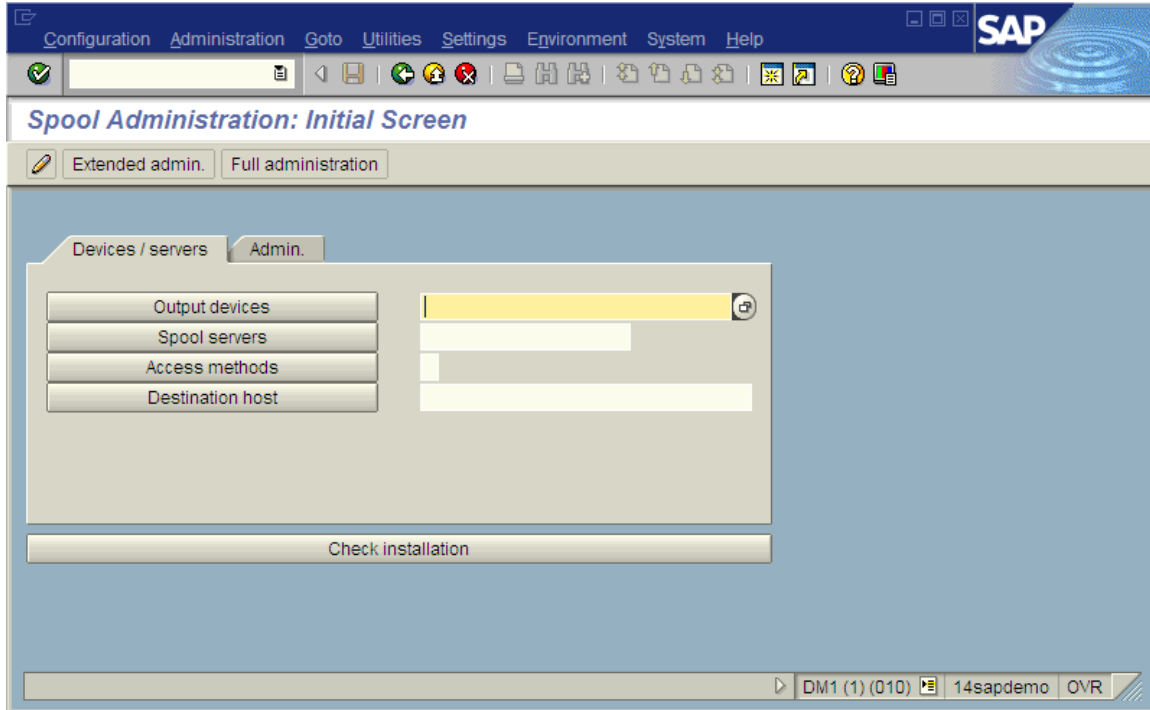
We value all feedback. Please add your comments/suggestions to the article in the [Zebra Support Portal](#).

Instructions

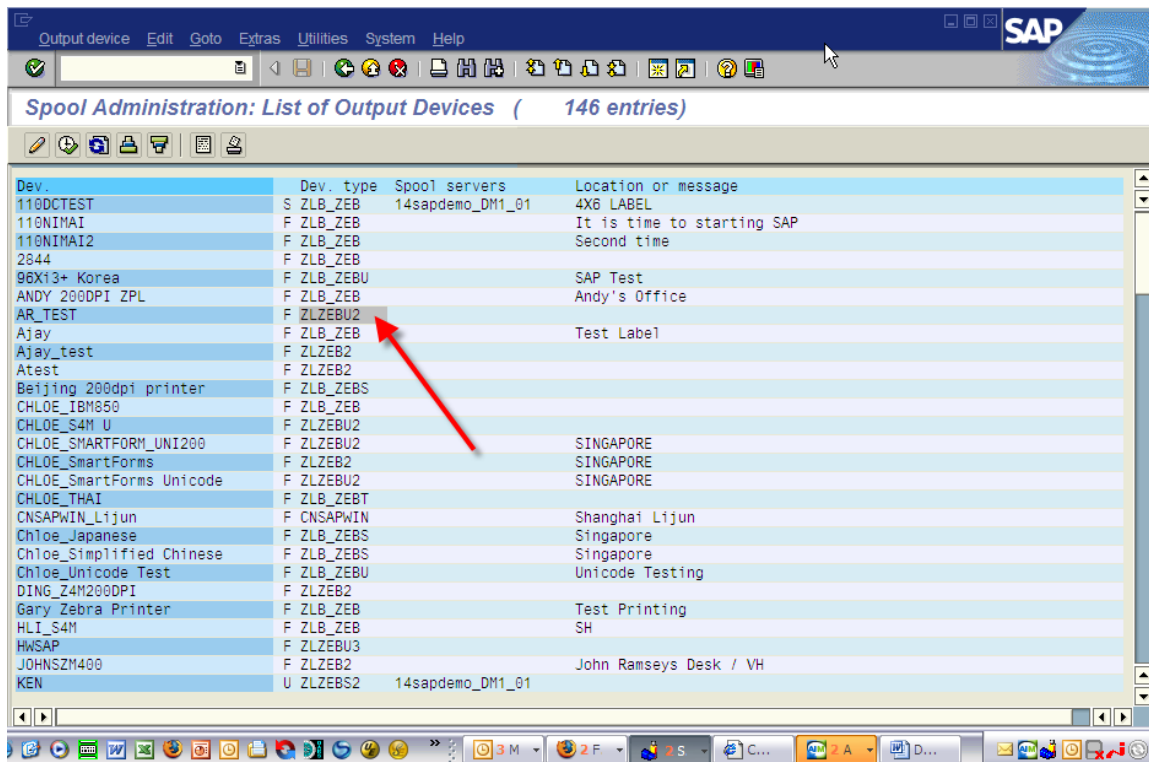
1. Go to transaction SPAD and press Enter.



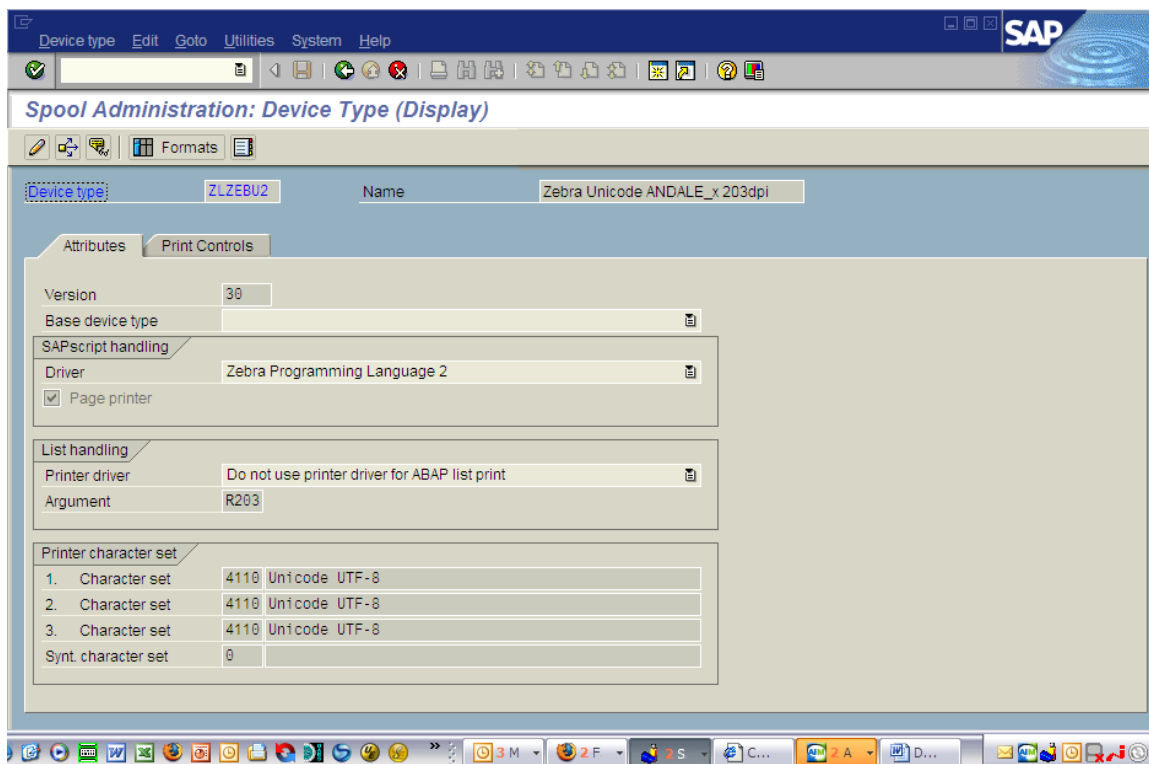
2. Click on "Output devices".



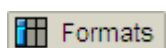
- This will open the “Spool Administration: List of Output Devices” window. Navigate to find the device type you want to use, and then double-click the device type under “Dev. type”.



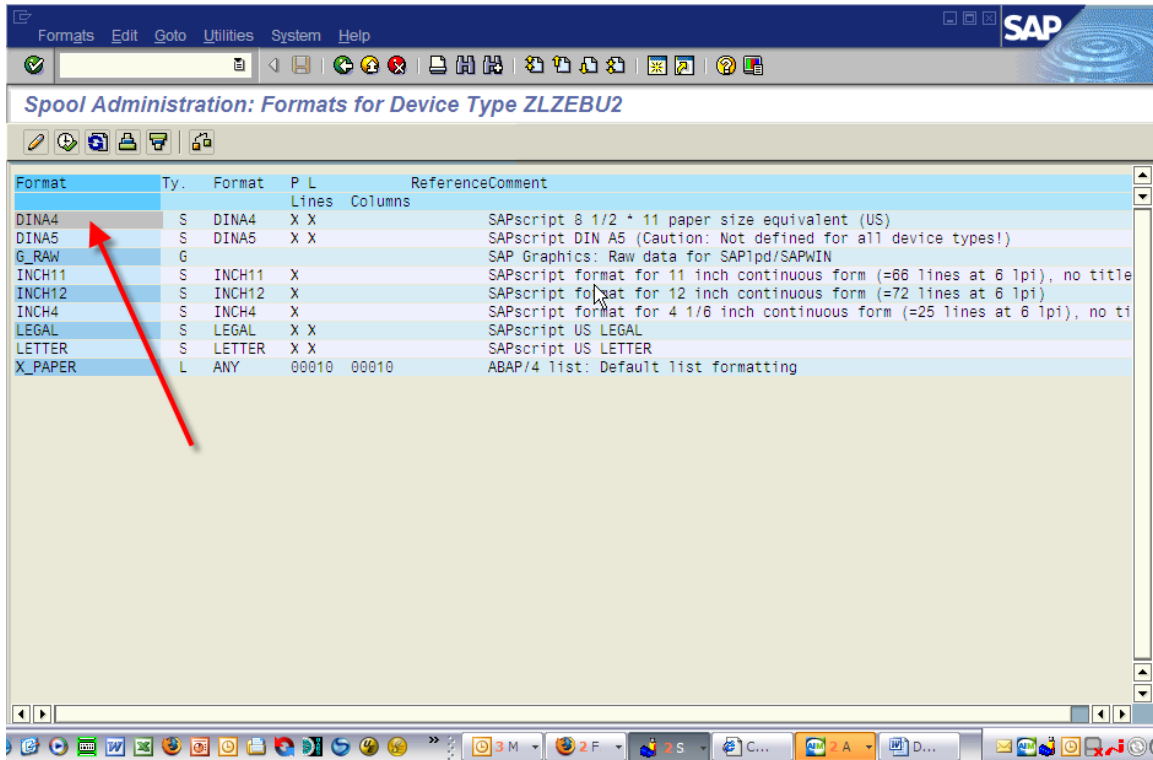
- This will open the “Spool Administration: Device Type” window.



- Click the Formats button.



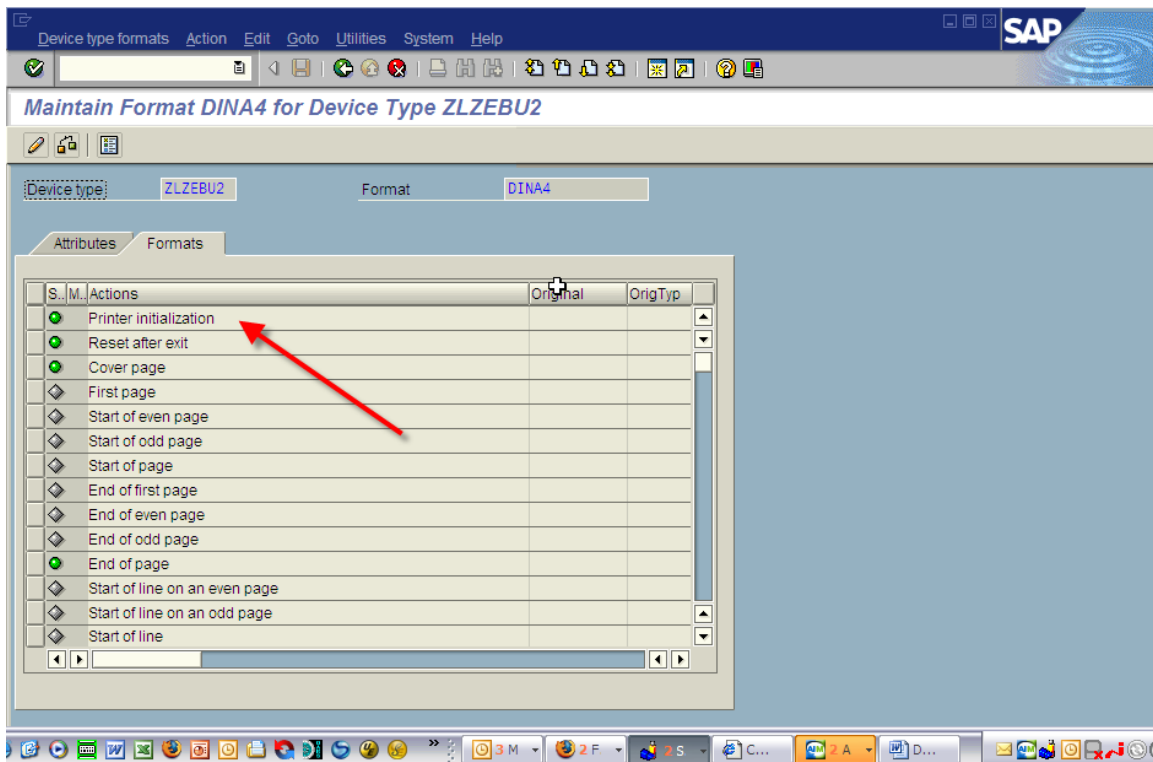
6. Double-click on the appropriate Format type.



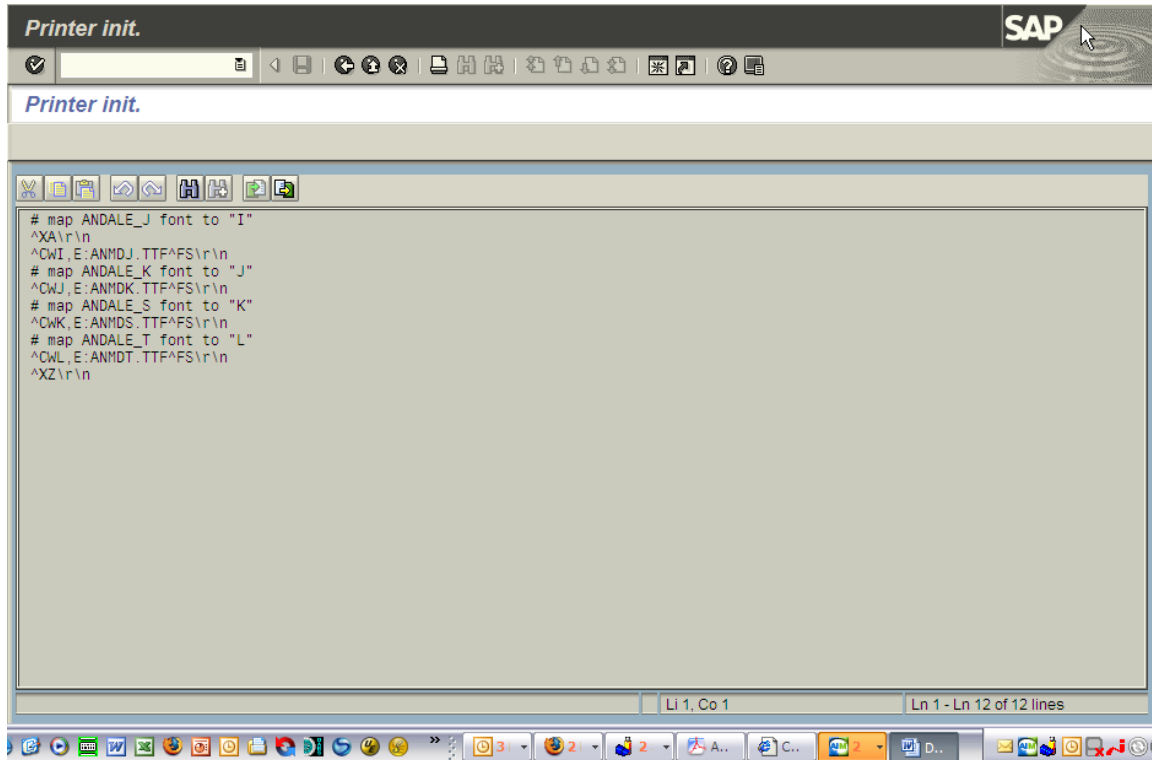
7. Click “Change”.



8. Double-click on “Printer initialization”.



9. This opens the Printer init screen.



10. Once you open the Printer Init. file, you will need to modify the font location. In the example listed above, there are four font locations that need to be changed. To change the font location, simply change the “^CWI,E” to be “^CWI,B”.

Zebra designates the following letters for their memory locations:
B: Memory PCMICA Card
E: Flash Memory

Note: Font name extensions should be .TTF, not .FNT.

Document Control

Version	Date	Description
1.0	8 th June 2009	Initial release
2.0	20 th July 2011	Converted to white paper standards
3.0	1 st July 2012	Updated Chinese link into document
4.0	16 th September 2012	Updated Spanish and Portuguese link into document

Disclaimer

*All links and information provided within this document are correct at time of writing
 Created for Zebra Global ISV Program by Zebra Development Services*



CORPORATE HEADQUARTERS
 Zebra Technologies Corporation
 475 Half Day Road, Suite 500
 Lincolnshire IL 60069 USA
 T: +1 847 634 6700
 +1 800 268 1736
 F: +1 847 913 8766

www.zebra.com

USA
 Zebra Technologies Corporation
 333 Corporate Woods Parkway
 Vernon Hills, IL 60061-3109
 U.S.A.
 T: +1 847 793 2600 or
 +1 800 423 0442
 F: +1 847 913 8766

LATIN AMERICA Zebra Technologies International, LLC
 9800 NW 41st Street, Suite 200
 Doral, FL 33178 USA T: +1 305 558 8470
 F: +1 305 558 8485

EMEA
 Zebra Technologies Europe Limited
 Dukes Meadow Millboard Road Bourne End
 Buckinghamshire SL8 5XF, UK
 T: +44 (0)1628 556000
 F: +44 (0)1628 556001

ASIA-PACIFIC
 Zebra Technologies Asia Pacific Pte Ltd
 71 Robinson Road #05-02/03
 Singapore 068895
 T: +65 6858 0722
 F: +65 6885 0838

OTHER LOCATIONS USA
 California, Georgia, Rhode Island, Texas, Wisconsin

EUROPE
 France, Germany, Italy, Netherlands, Poland, Spain, Sweden

ASIA-PACIFIC
 Australia, China, Japan, South Korea

LATIN AMERICA
 Argentina, Brazil, Florida (USA), Mexico

AFRICA/MIDDLE EAST India, Russia, South Africa, United Arab Emirates

Copyrights

©2010 ZIH Corp. Zebra and the Zebra head graphic are registered trademarks of ZIH Corp
All rights reserved. All other trademarks are the property of their respective owners.

P/N: WH86