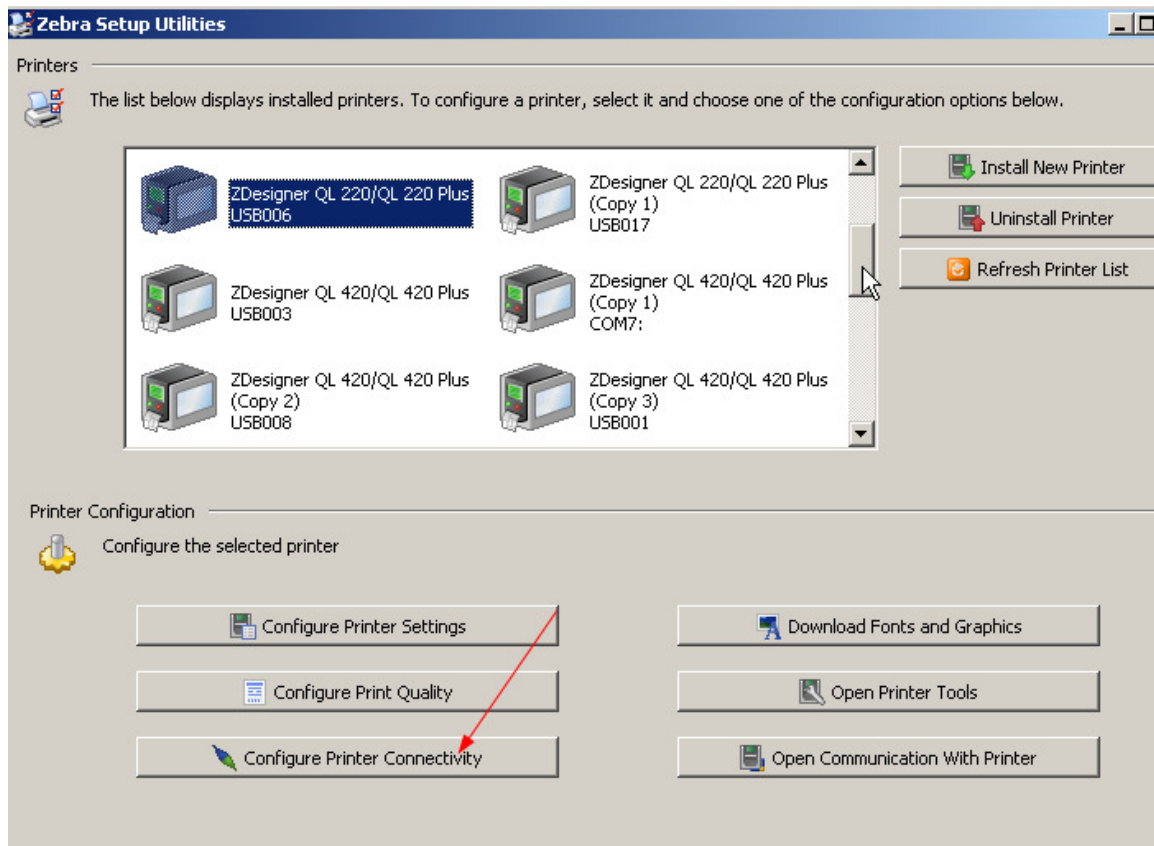
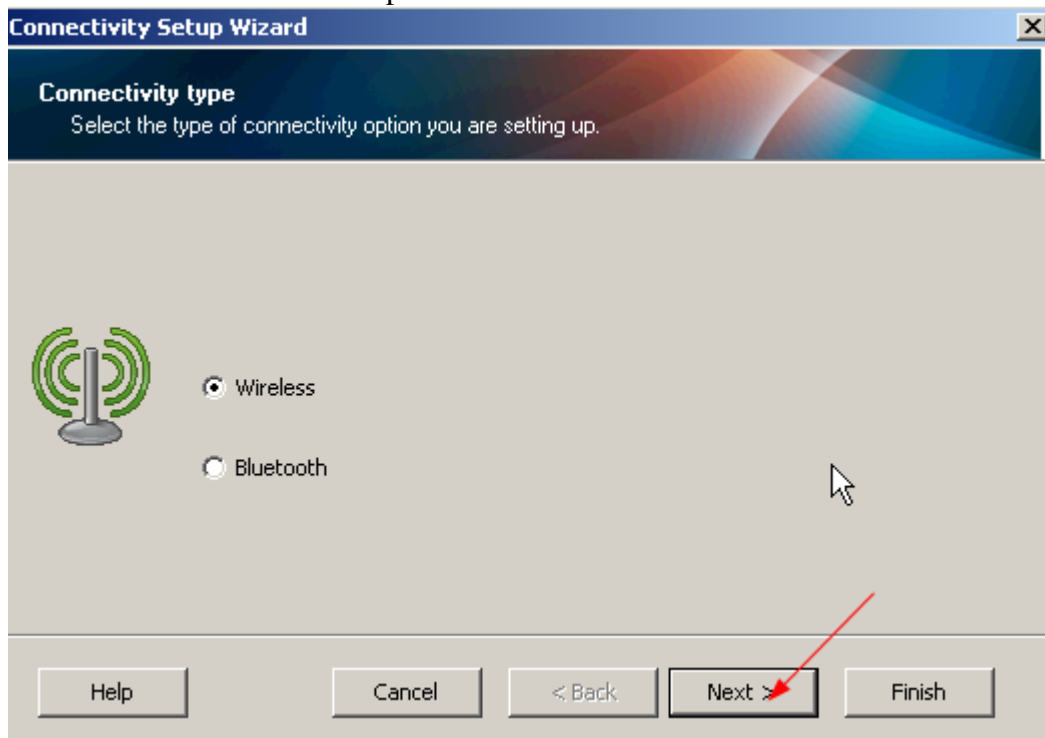


Loading a PEAP root certificate to a mobile printer with Zebra Setup Utilities

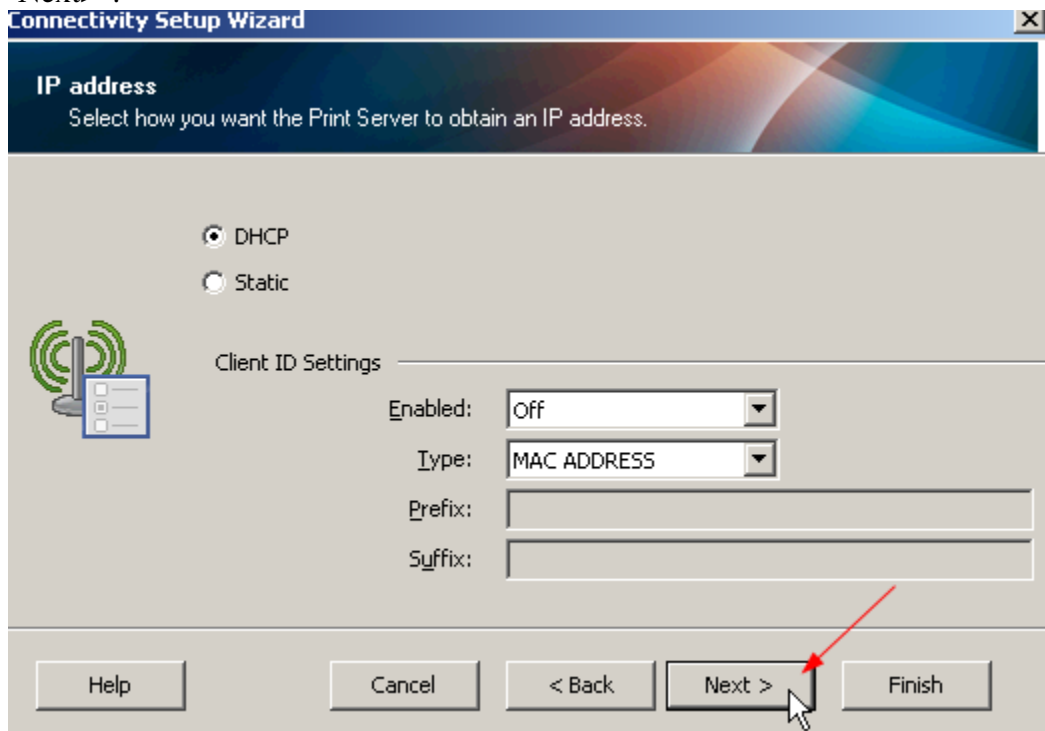
Open the Zebra Setup Utilities and highlight the printer and choose the “Configure Printer Connectivity” button.



Then choose the “Wireless” option.



Choose which the appropriate IP address for your network configuration. Then choose “Next>”.



Then choose the “EAP-TTLS” option and choose “Next>”.



The screenshot shows the 'Wireless settings' step of the Connectivity Setup Wizard. The window title is 'Connectivity Setup Wizard'. The main heading is 'Wireless settings. Define wireless settings.' Below this, a message states: 'Please enter your wireless settings below. Settings for selected security mode will be configured on the following page.' There are four input fields: 'ESSID:' with the value '125', 'Security mode:' with a dropdown menu set to 'EAP-TTLS', 'Security username:', and 'Security password:'. A red arrow points to the 'EAP-TTLS' option in the dropdown menu. Another red arrow points to the 'Next >' button at the bottom. A mouse cursor is visible near the bottom right. A small icon of a wireless printer is on the left side.

ESSID: 125

Security mode: EAP-TTLS

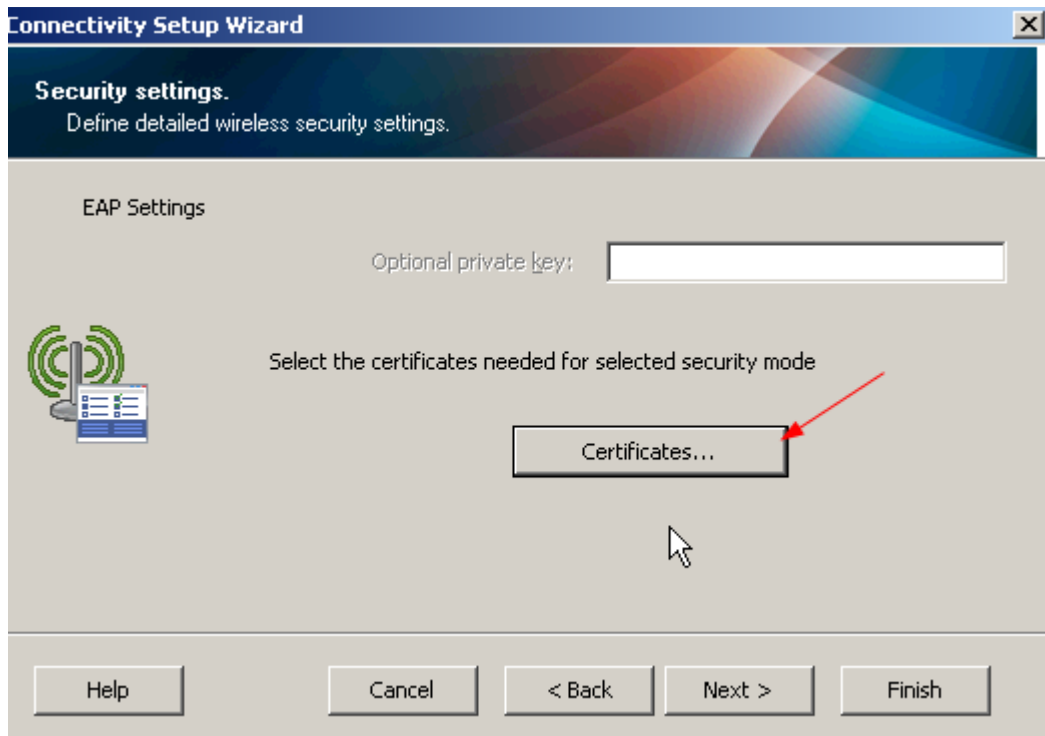
Security username:

Security password:

All security options may not be available in your printer. Please refer to the Wireless Print Server and Wireless Plus Print Server User Guide for supported security protocols.

Help Cancel < Back Next > Finish

Click the “Certificates...” button.



The screenshot shows the 'Security settings' step of the Connectivity Setup Wizard. The window title is 'Connectivity Setup Wizard'. The main heading is 'Security settings. Define detailed wireless security settings.' Below this, the section is titled 'EAP Settings'. There is one input field labeled 'Optional private key:'. A message states: 'Select the certificates needed for selected security mode'. A button labeled 'Certificates...' is highlighted with a red arrow. A mouse cursor is visible near the bottom center. A small icon of a wireless printer is on the left side.

EAP Settings

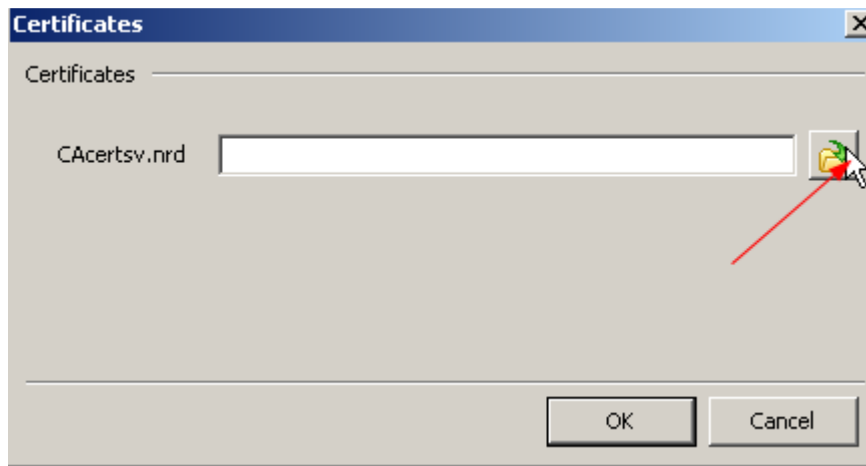
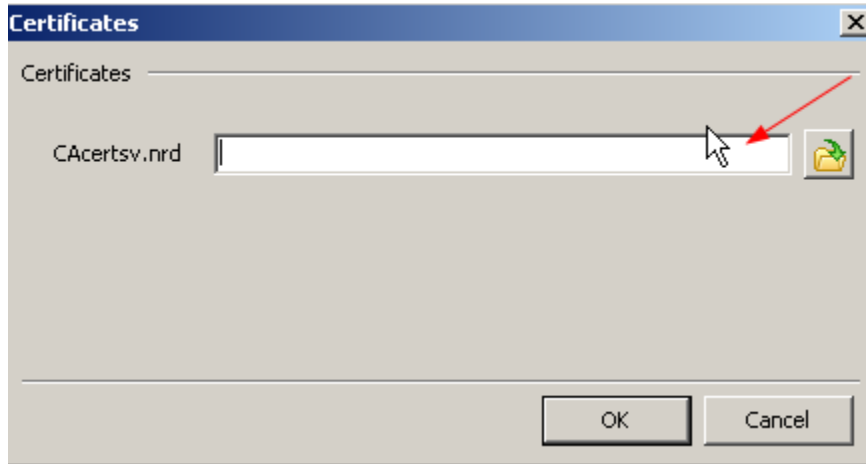
Optional private key:

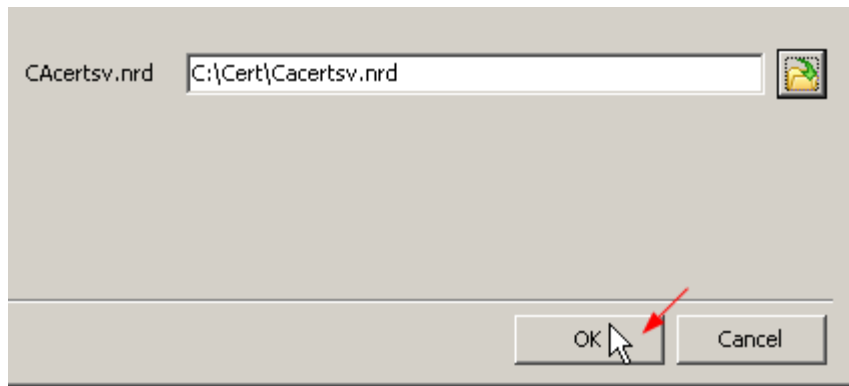
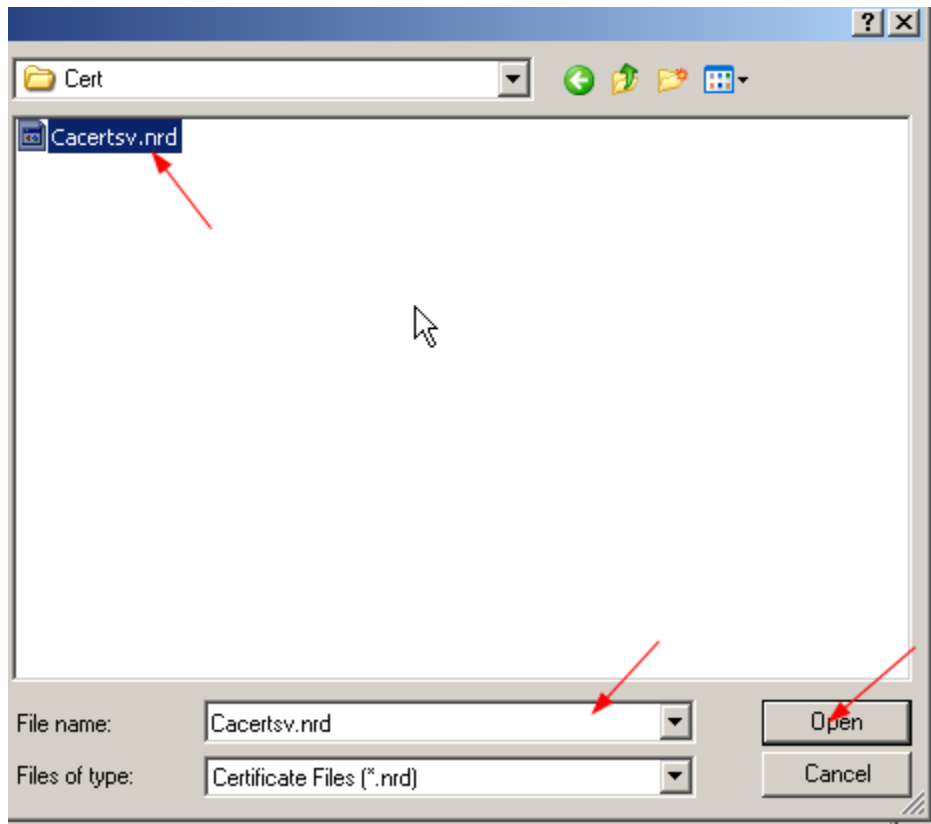
Select the certificates needed for selected security mode

Certificates...

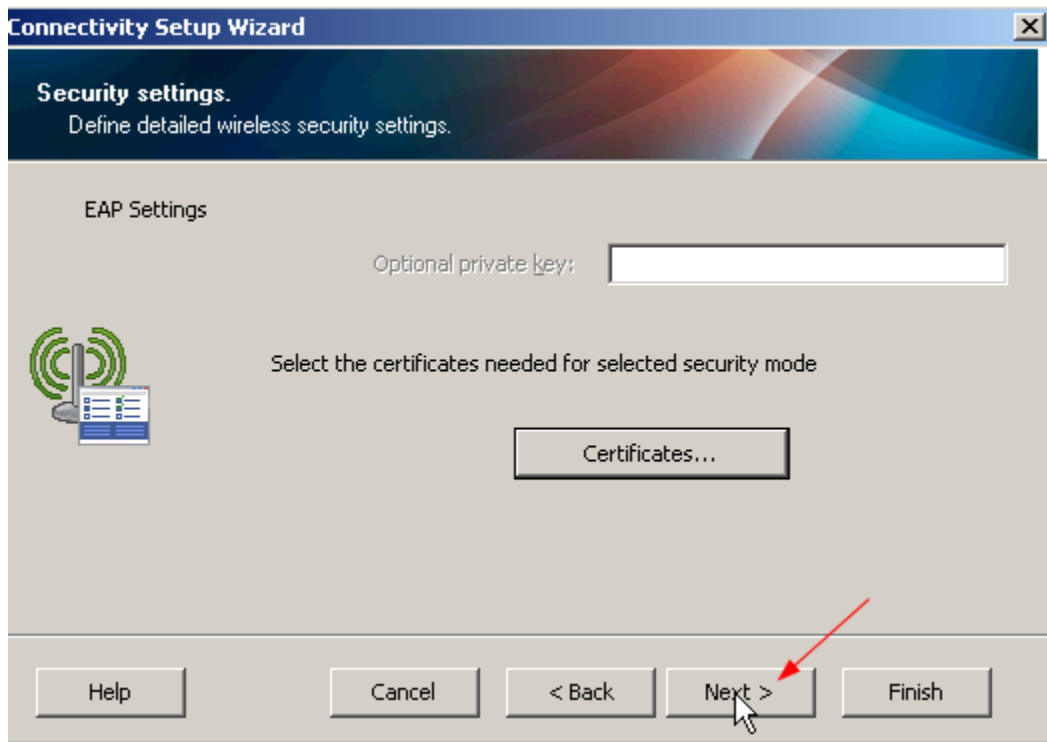
Help Cancel < Back Next > Finish

Then choose the directory the certificate is stored in by choosing the folder icon. Then choose the certificate file. Please note that the root certificate will need to be in .PEM format and renamed as Cavertsv.nrd.

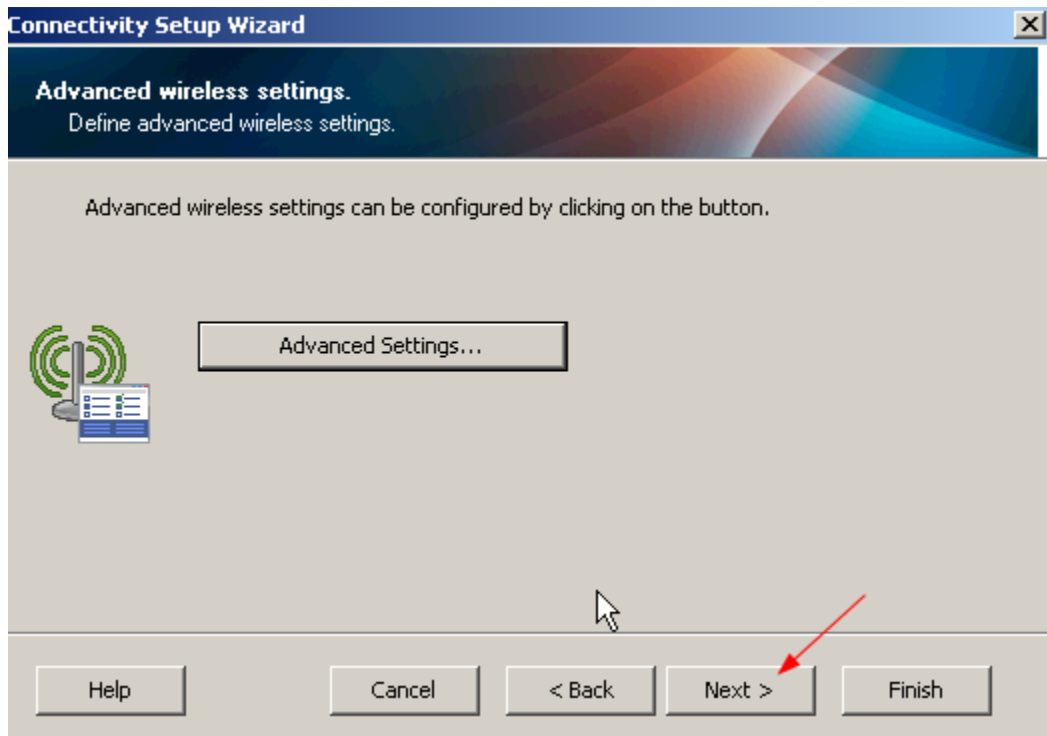




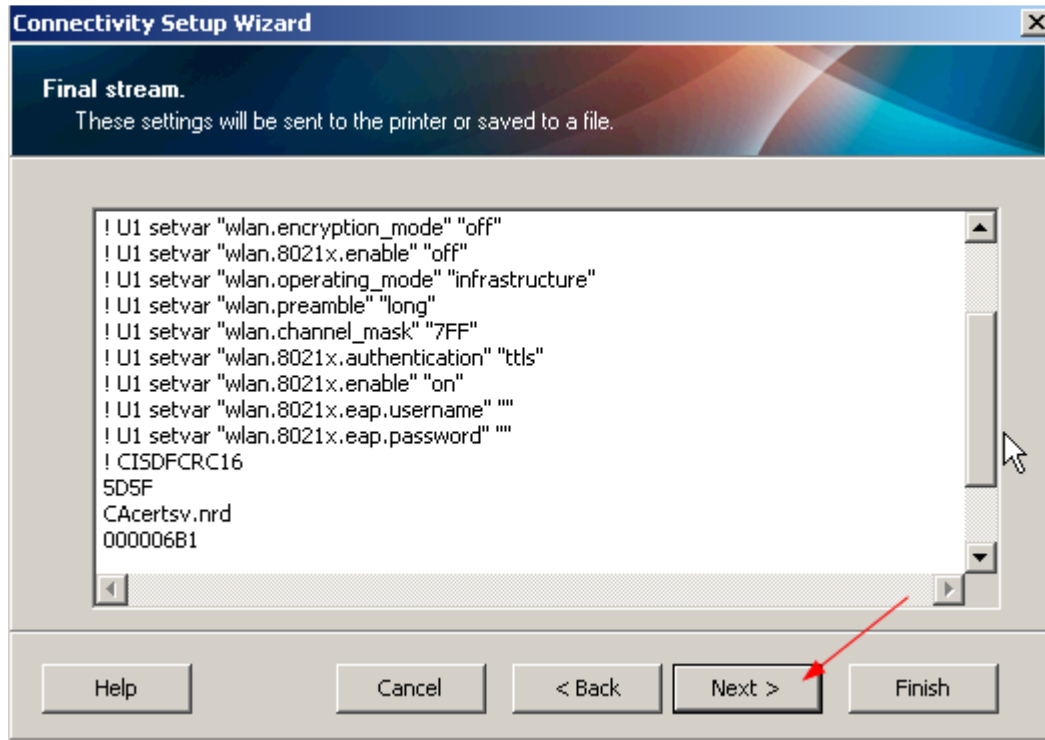
Once the certificate has been loaded choose “Next>”.



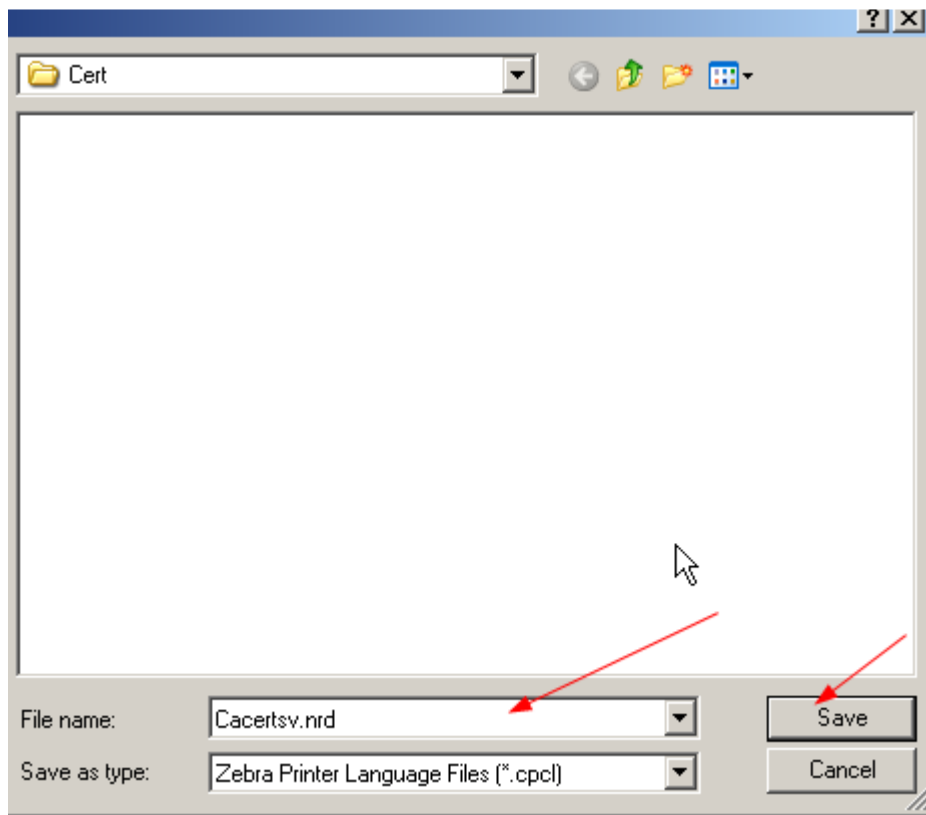
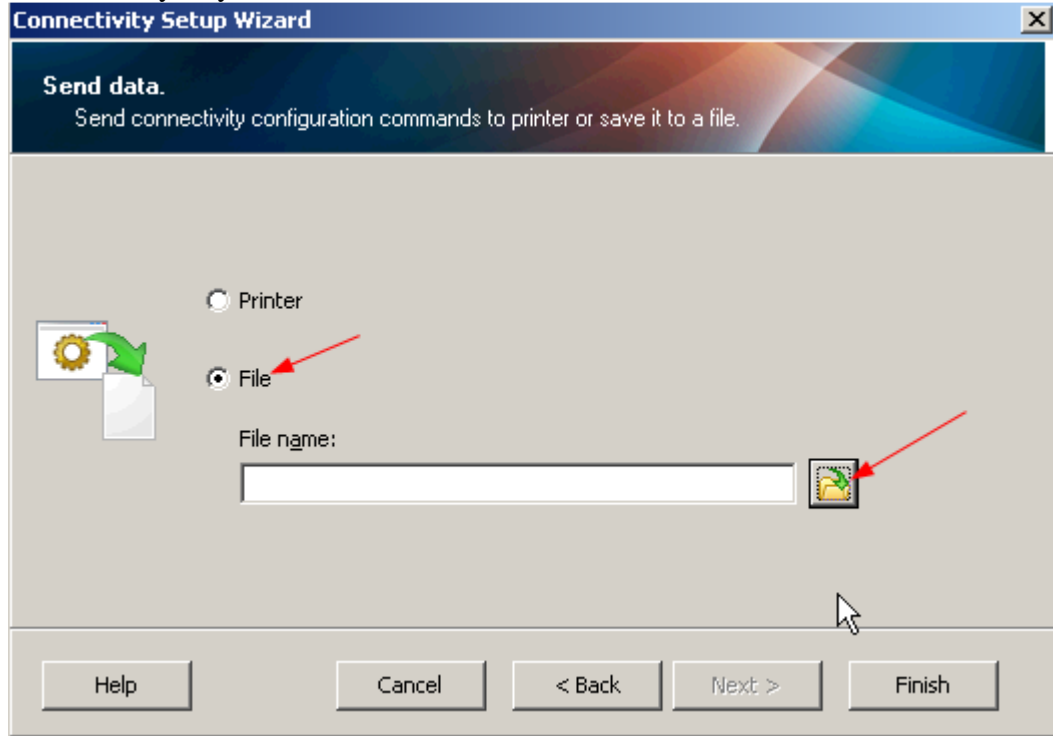
Then choose “Next>”.



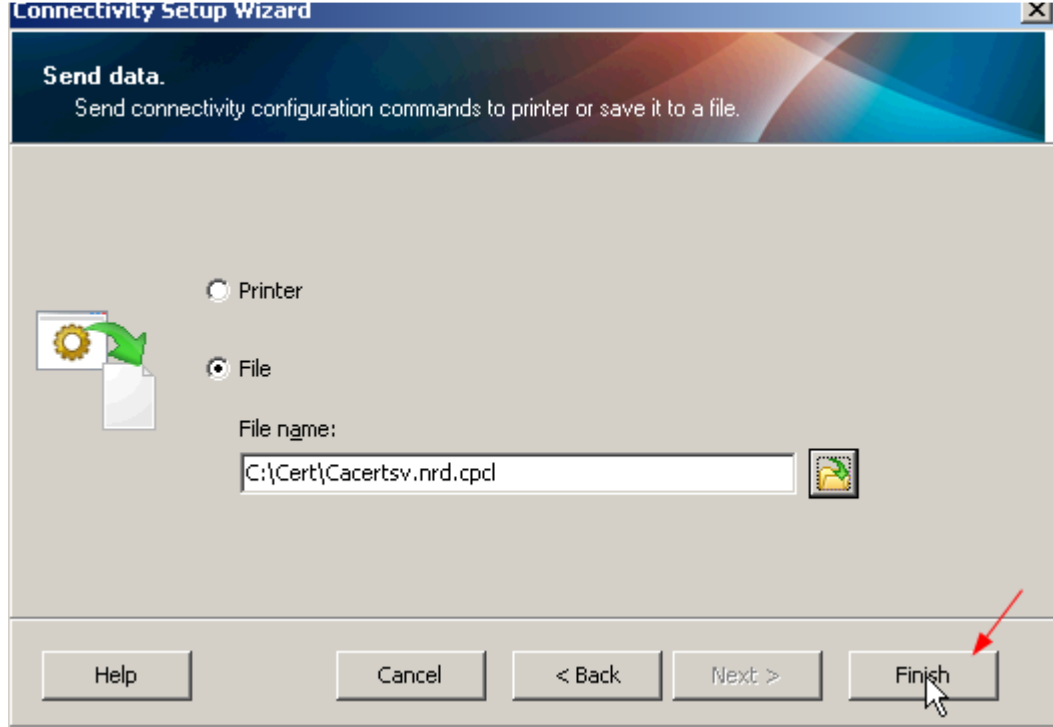
The certificate file will now have command sets as well as a header. Choose “Next>”.



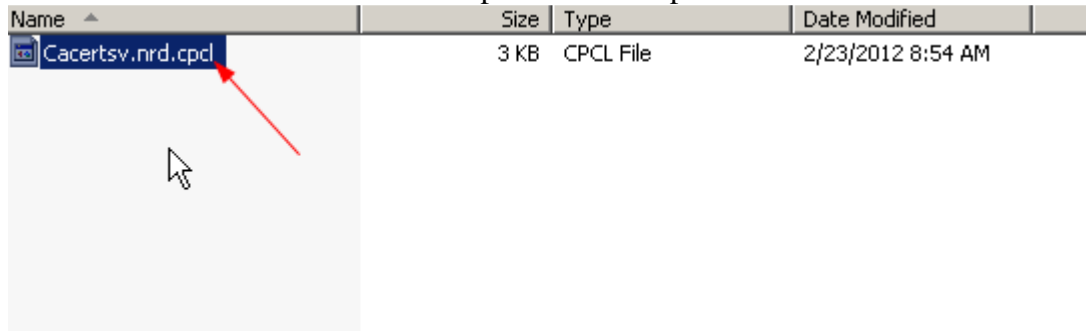
Then choose the “File” option and click on the folder icon to store the new certificate file in a directory of your choice.



Then choose “Finish”.



Locate the file that was created and open it in “Notepad”.



Once opened in “Notepad” edit the file by deleting any command set with a “! U1” leaving just the “! CISDFCRC” header.



```
! U1 setvar "ip.dhcp.enable" "on"
! U1 setvar "wlan.ip.protocol" "dhcp"
! U1 setvar "wlan.essid" "125"
! U1 setvar "wlan.leap_mode" "off"
! U1 setvar "wlan.kerberos.mode" "off"
! U1 setvar "wlan.encryption_mode" "off"
! U1 setvar "wlan.8021x.enable" "off"
! U1 setvar "wlan.operating_mode" "infrastructure"
! U1 setvar "wlan.preamble" "long"
! U1 setvar "wlan.channel_mask" "7FF"
! U1 setvar "wlan.8021x.authentication" "ttls"
! U1 setvar "wlan.8021x.enable" "on"
! U1 setvar "wlan.8021x.eap.username" ""
! U1 setvar "wlan.8021x.eap.password" ""
! CISDFCRC16
5D5F
CAcertsv.nrd
000006B1
E8EB
```

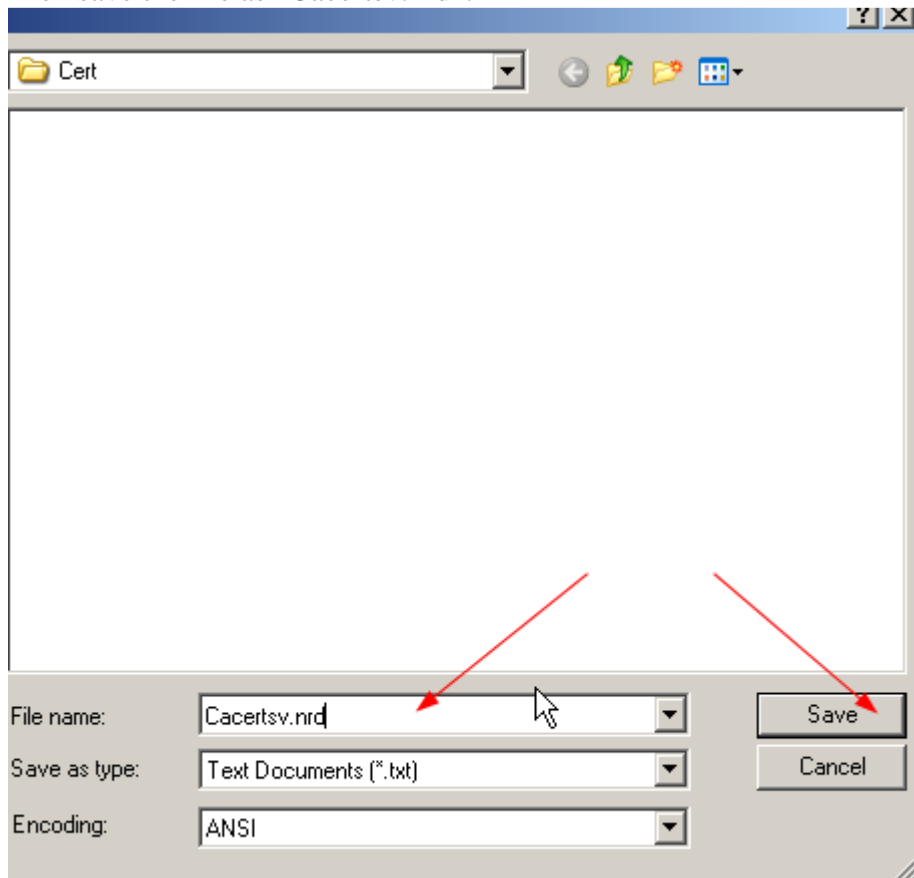
Please note that there is a “ ! U1” command located at the bottom of the file. Ensure that this command is deleted as well.

```
! U1 do "device.reset" ""  
b3JpdHkw0gYIKwYBBQUHMAKGLmh0dHA6Ly9jYS0wMS9Q50kvUk9PVENBX1dEU3RhD  
bmRhbG9uZVJvb3RDQ55jcnQw0gYIKwYBBQUHMAKGLmh0dHA6Ly9jYS0wMi9Q50kvD  
Uk9PVENBX1dEU3RhbmRhbG9uZVJvb3RDQ55jcnQw0QYJKoZIhvcNAQEFBQADggIBD  
AK1XvHABYrSkQ9YqgJmcm1u0E+0DQZANeSrh7vHeChgmbPBW3SUh9B4nTaUkZDkfD  
tlwushb4Bzr82mFzpQ5eE4r2G9a/TQQmWIrChquAd7pzKZ5fu0TymVNF1/yQQJBB9D  
JS73+UzDM52uVZ6bawzxN2es0CwGb/zWtg5MZeykrv2RimEMyu+4o6Xcf8f08tdhD  
YTczx4WmRWCQYMJe5wjry10+udj/mh0Za3p8gGp/kI8DAUHAA/d0YiDiw+HRVd1D  
ZUTLe++iZ1DJBxt0Vi fcmCpd2ze8GI004iYAYA50/MBb6Ke33KhqLEh/tzSI00PpD  
YQL/31r84SDw5Gwbc1f4xH2p1VhzKVmyzJ2IjS0Wm7Z+v1uq/IGzDwSxMTTcaTNeD  
Cgv4JE0dz439/ktmSwHL0m0xv+wgj+wsJPRPc9kGfuPow4m+SLyuTI4y7suMh0R2D  
RD6XLbrfZnSPH67idkF1YXcdfVwcju0Jw2AjurYFYQ9YzB0fsdUfyNmugua2XbmJD  
Y09vrHkUJXwXtCzomBhKGhaba/hyd4wbbwEfI1Q3j53t+RVYQnfshwccMzro0yPcD  
URbPQ5TqQ0vgx1zbnM2unxvwBkC1mn5/L2YITnkEaLS4XQr4w4wCm3QtGkSPpDXE0oZFanLc  
CERTIFICATE-----
```

! U1 do "device.reset" ""

```
PVdEU3RhbmRhbG9uZVJvb3RDQ5xDTj1BSUEsQ049UHVi bG1j JTIwS2V5 JTIwI2V2yD  
dm1jZXMsQ049U2VydmljZXMsQ049Q29uZm1ndXJhdGlvbiXEQz1XRCxEQz1jb20/D  
Y0FDZXJ0aWZpY2F0ZT9iYXN1P29iamVj dENsYXNzPWN1cnRpZmljYXRpb25BdXRoD  
b3JpdHkw0gYIKwYBBQUHMAKGLmh0dHA6Ly9jYS0wMS9Q50kvUk9PVENBX1dEU3RhD  
bmRhbG9uZVJvb3RDQ55jcnQw0gYIKwYBBQUHMAKGLmh0dHA6Ly9jYS0wMi9Q50kvD  
Uk9PVENBX1dEU3RhbmRhbG9uZVJvb3RDQ55jcnQw0QYJKoZIhvcNAQEFBQADggIBD  
AK1XvHABYrSkQ9YqgJmcm1u0E+0DQZANeSrh7vHeChgmbPBW3SUh9B4nTaUkZDkfD  
tlwushb4Bzr82mFzpQ5eE4r2G9a/TQQmWIrChquAd7pzKZ5fu0TymVNF1/yQQJBB9D  
JS73+UzDM52uVZ6bawzxN2es0CwGb/zWtg5MZeykrv2RimEMyu+4o6Xcf8f08tdhD  
YTczx4WmRWCQYMJe5wjry10+udj/mh0Za3p8gGp/kI8DAUHAA/d0YiDiw+HRVd1D  
ZUTLe++iZ1DJBxt0Vi fcmCpd2ze8GI004iYAYA50/MBb6Ke33KhqLEh/tzSI00PpD  
YQL/31r84SDw5Gwbc1f4xH2p1VhzKVmyzJ2IjS0Wm7Z+v1uq/IGzDwSxMTTcaTNeD  
Cgv4JE0dz439/ktmSwHL0m0xv+wgj+wsJPRPc9kGfuPow4m+SLyuTI4y7suMh0R2D  
RD6XLbrfZnSPH67idkF1YXcdfVwcju0Jw2AjurYFYQ9YzB0fsdUfyNmugua2XbmJD  
Y09vrHkUJXwXtCzomBhKGhaba/hyd4wbbwEfI1Q3j53t+RVYQnfshwccMzro0yPcD  
URbPQ5TqQ0vgx1zbnM2unxvwBkC1mn5/L2YITnkEaLS4XQr4w4wCm3QtGkSPpDXE0oZFanLcfcck0dh/NpJNzk20oR+4+3xymHt8tce5IkVI0-----END  
CERTIFICATE-----
```


Then save the file as “Cacertsv.nrd”.



Once saved then locate the file and rename it by changing the extension to .nrd instead of .txt. See example:

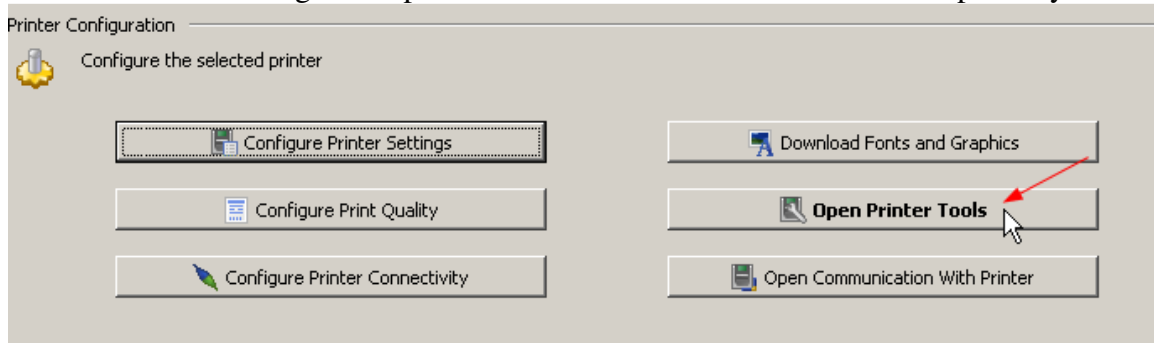
Delete the .txt extension:

Name	Size	Type
Cacertsv.nrd.txt	2 KB	Text Document

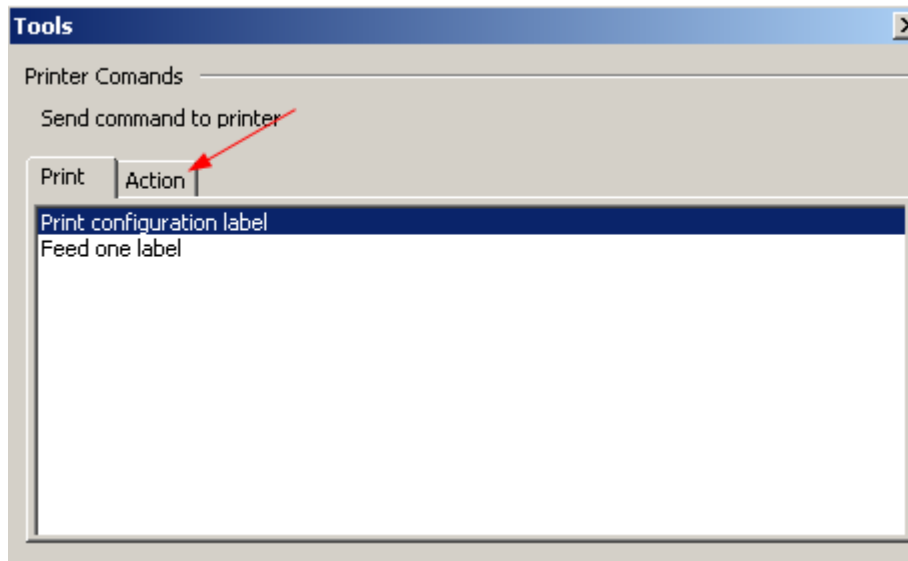
The file should now look like the following:

Name	Size	Type
Cacertsv.nrd	2 KB	NRD File

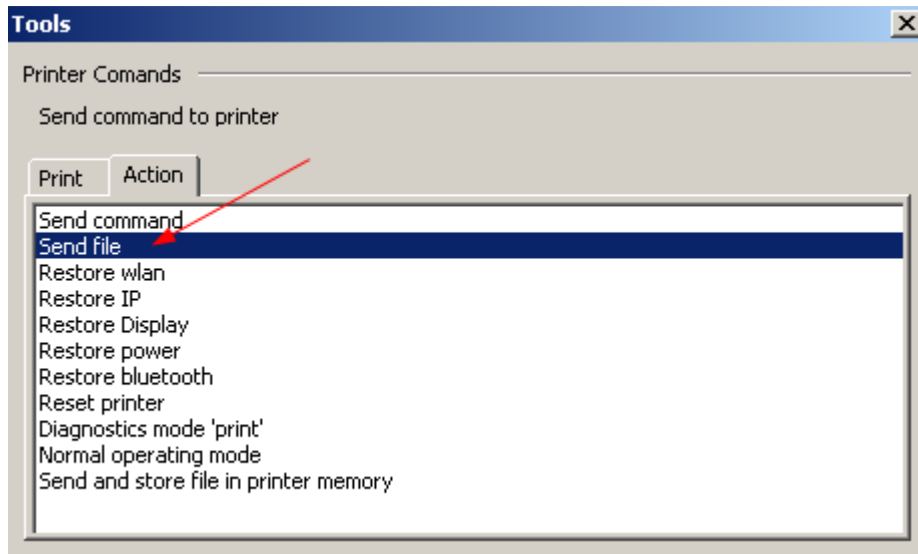
Then send the file using the “Open Printer Tools” button in the Zebra Setup Utility.



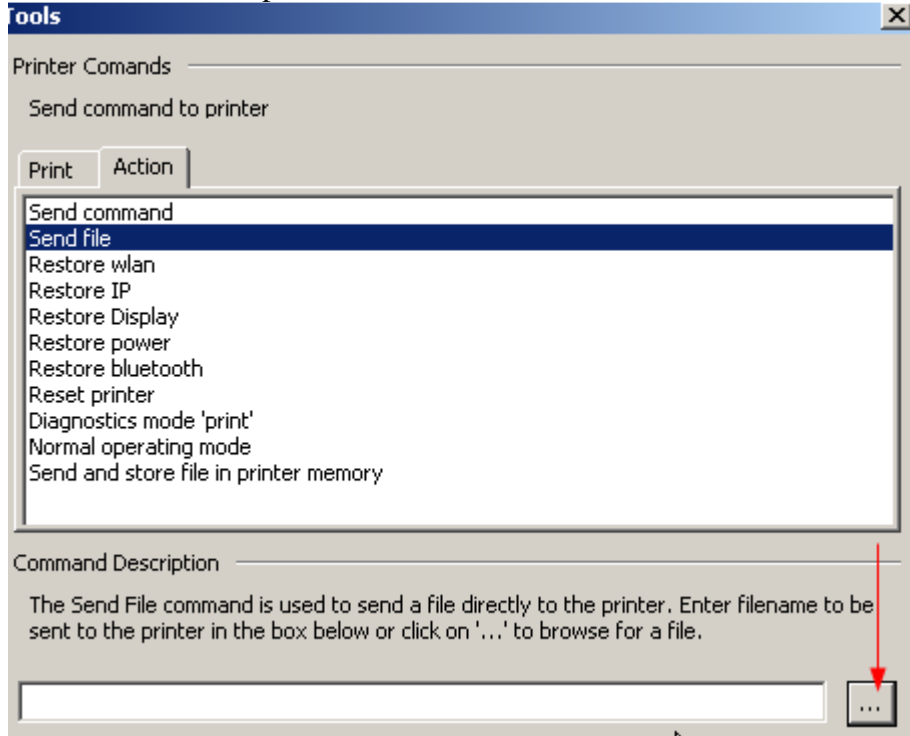
Then choose the “Action” tab.



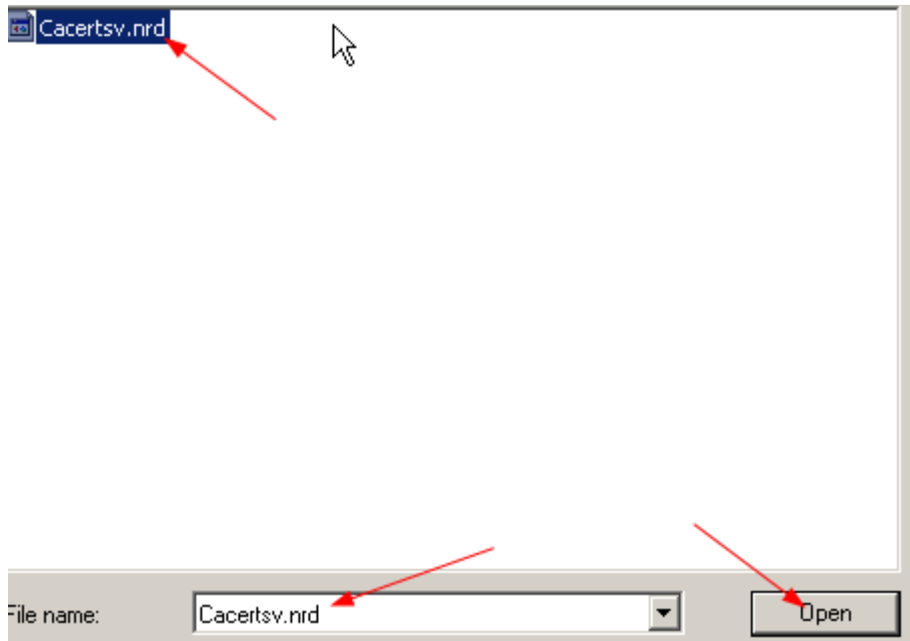
Then choose the “Send File”



Then choose the ellipses box.



Then choose the file that was created and choose "Open".



Then choose “Send” to send the file to the printer.

