

Firmware Download

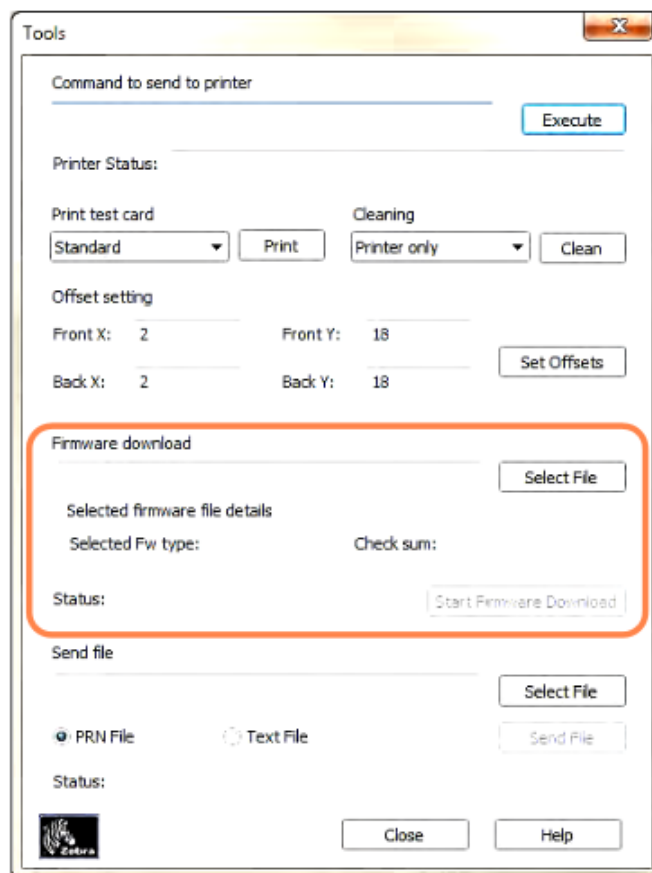
This option is used to install the ZXP Series 3 firmware, downloaded from the Zebra web site at <http://www.zebra.com> under *Drivers & Downloads*.



Important • Do not turn off the power to the printer until the process is done and the OCP displays *READY*. If the download process is interrupted, the printer will not operate.

Step 1. Download the firmware from Zebra web site (<http://www.zebra.com>), and save it to a location you can easily find.

Step 2. In the Tools window, click on the **Select File** button.



Step 3. From the Browse window, “find” the downloaded firmware (BIN file type), and click on the **Open** button.

Step 4. Click on the **Start Firmware Download** button to install the firmware.