

# Creating/Exporting a Graphic to an EPL Printer using ZebraDesigner

R1 7/2013

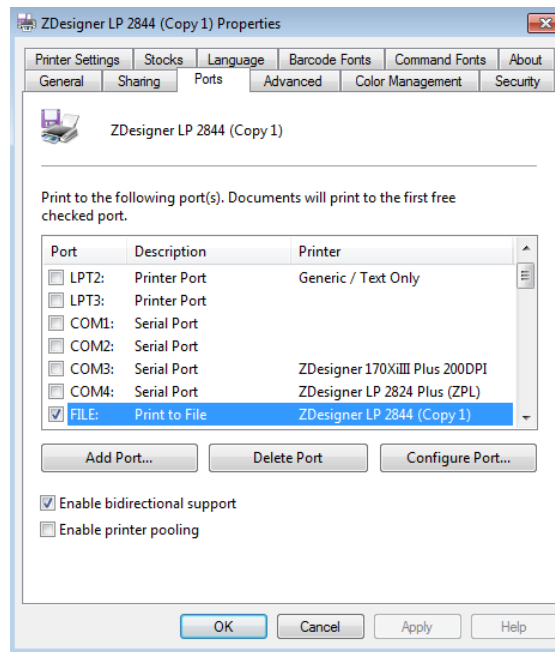
Many newer PCs do not have serial or parallel ports available and the older EPL compatible conversion utilities do not support USB. This document demonstrates using the Zebra Designer Label software and driver to create and export a graphic to an EPL printer.

## Prerequisites – (You need)

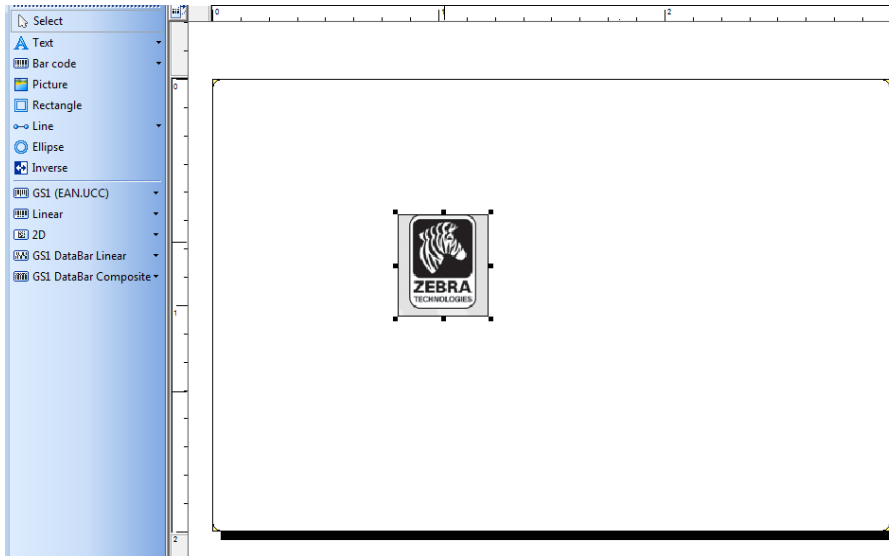
- Zebra Designer Label Software (Free from [www.zebra.com](http://www.zebra.com))
- Zebra Designer Driver with an EPL printer assigned to one of the USB ports
- Notepad ++ (A free source code editor available from <http://notepad-plus-plus.org/> ) This is needed to edit the graphic file before downloading to the printer to produce an uncorrupted EPL graphic.

## Procedure

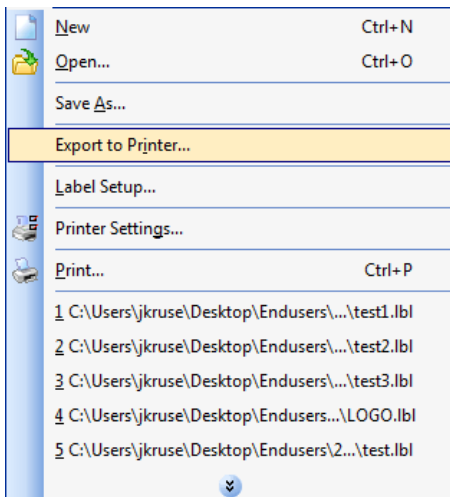
1. Open the control panel and select Printers and Faxes
2. Select your USB connected printer, then right click and select Properties.
3. Select the Properties' Ports Tab **Important:** Note the USB Port Number assigned to that printer. (you may have to widen the Port column to view the USB Port Number)
4. Change the printer from USB to File by checking the File selection in the Port column.



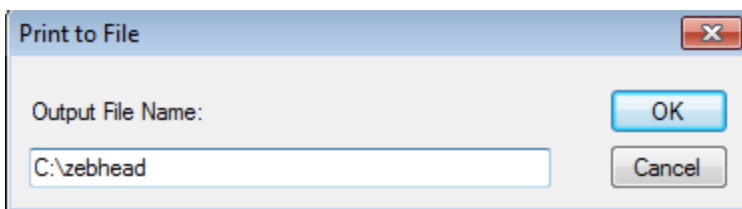
5. Using ZebraDesigner Software create a new label for your printer with your graphic.



6. Export the label format to the printer.

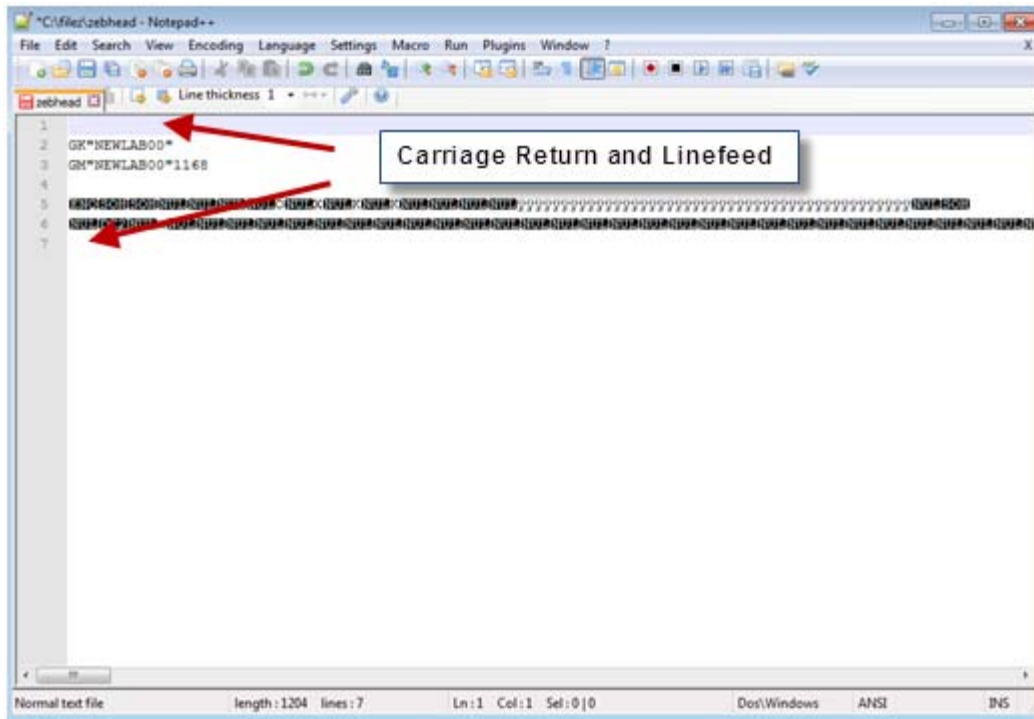


Windows will prompt to save the file. Enter the complete file path.

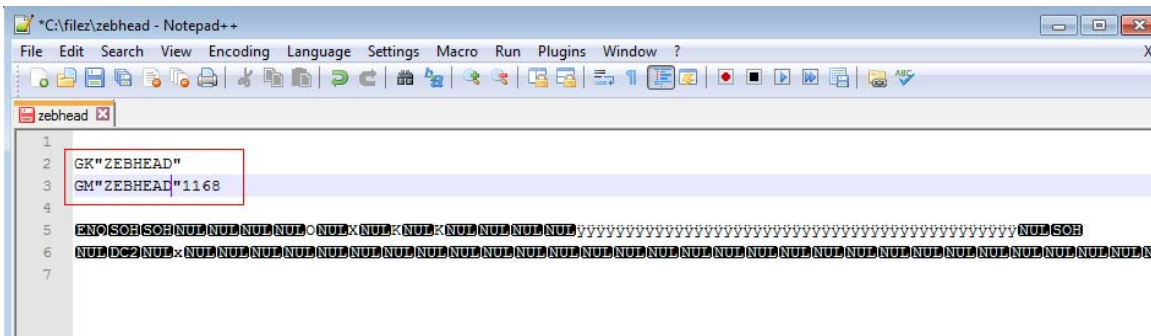




Make sure there is a Carriage Return/Line Feed before the first line of code and after the last line of code.



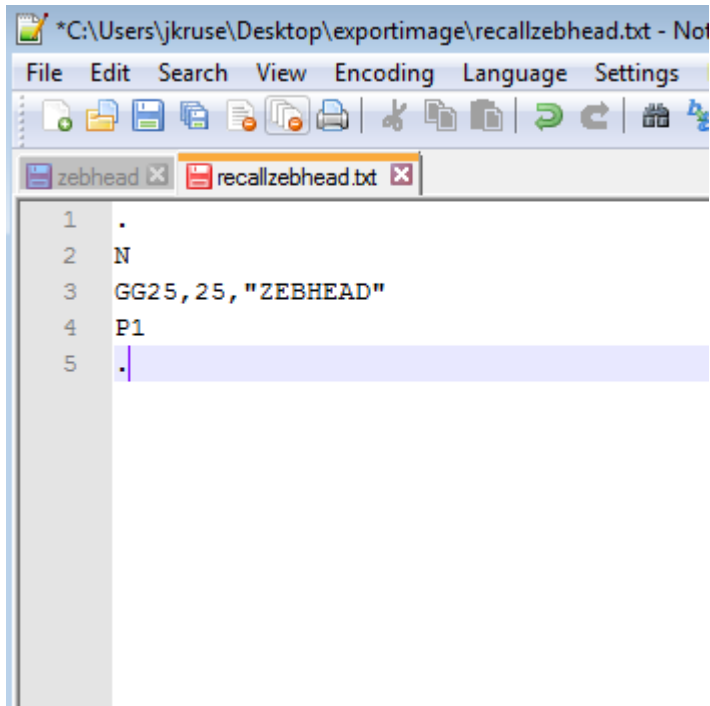
ZebraDesigner will automatically create a name for the graphic, which can be edited. Do not use more than 8 characters in the name.



9. In Windows, reset your printer port back to the originally assigned USB Port

You can now test the saved file using a Zebra tool (ZDesigner driver, Zebra Setup Utilities, etc.) to print the graphic.

The code can be recalled and printed using the GG command. Here is an example of a text file which when sent to the printer will print the image on a label.



```
*C:\Users\jkruse\Desktop\exportimage\recallzebhead.txt - Notepad
File Edit Search View Encoding Language Settings
zzebhead x recallzebhead.txt x
1 .
2 N
3 GG25, 25, "ZEBHEAD"
4 P1
5 .
```