

# Using the ZXP Series 3 Half Panel Ribbon PN 800033-847

The half panel ribbon is used to print color within a 38mm wide window on the front, back, or both sides of the card. The position of the 38mm window is adjustable over the length of the card.

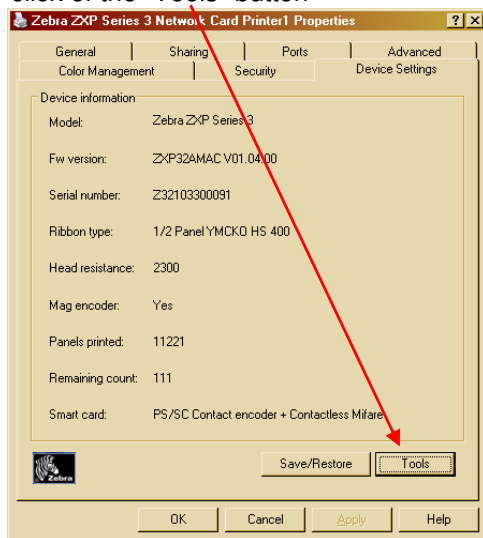
A manual command is used to define the position of window with respect to the leading edge of the card (edge of card which exits the printer first) by setting an offset for each side of the card.

The command is as follows:

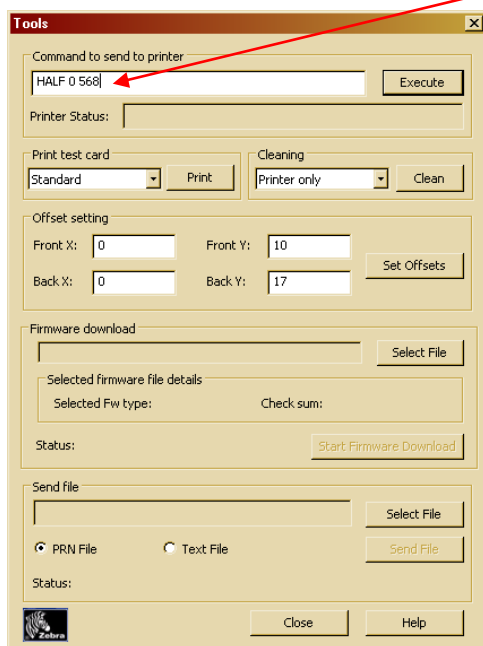
“HALF p1 p2” where p1 is the top side offset and p2 is the back side offset; each variable has a range of 0 to 568. Values below 0 and above 568 will return a command error.

To issue the command to the printer

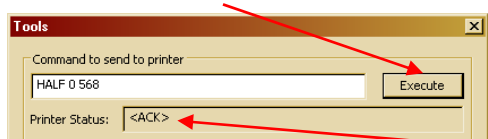
1. Go to the ZXP3 windows driver properties
2. click on the “Device Settings” tab
3. click of the “Tools” button



4. Enter the command in the “Command to send to printer” box



5. Click on the “Execute” button



If successful the printer will respond with <ACK>

As an example the command "HALF 0 568" will print a dual sided card with the color window on the front side of the card next to the leading edge and the color window on the back side of the card next to the trailing edge. Depending on which axis the card is rotated (long versus short) one side may have to be rotated 180 degrees to get the results.