

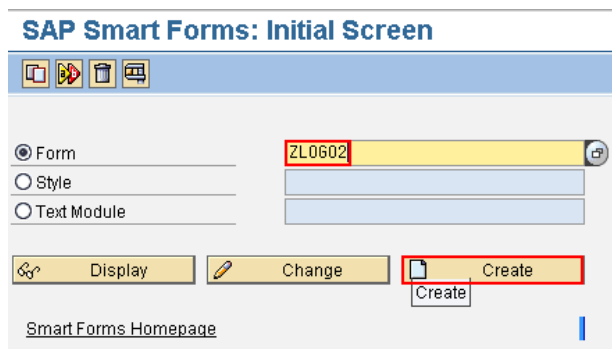


Adding a Black & White BMP logo to SAP® Smart Forms™

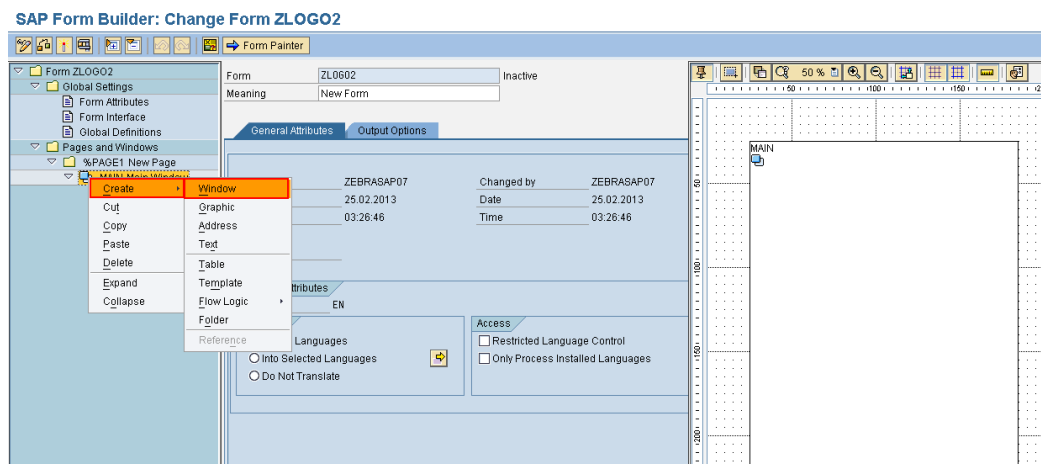
The SAP system only contains certain graphics and logos and therefore to print your company graphics or logos on the Zebra printer you would first have to import them into the SAP system.

This guide will detail what you need to do to add these files into the SAP system. This process details how to add a new logo called ZSGDANCINGZEBRA.

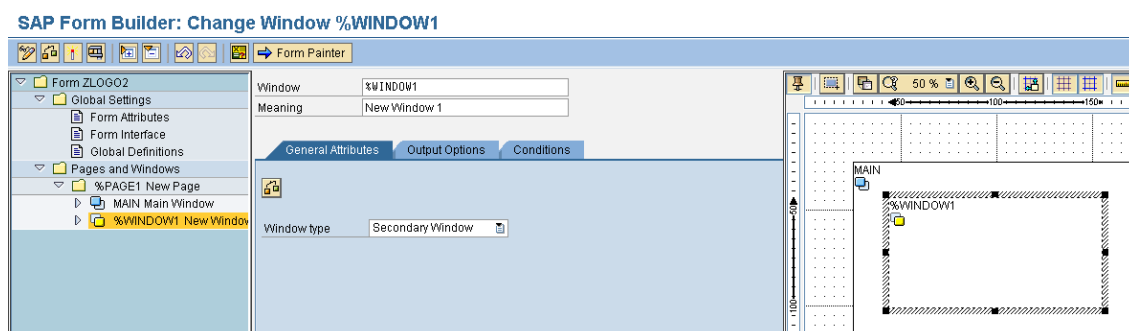
1. Go to Smart Forms
2. Enter the new Form name and select Create (I am using ZLOGO2)



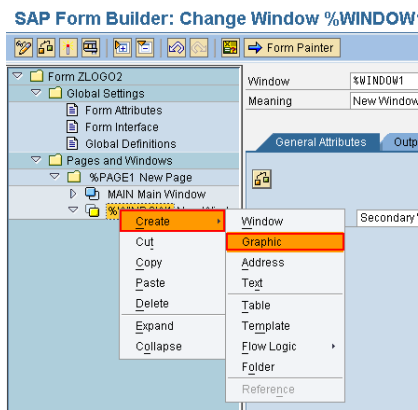
3. Select the MAIN Main Window
4. Right-click and select Create, Window



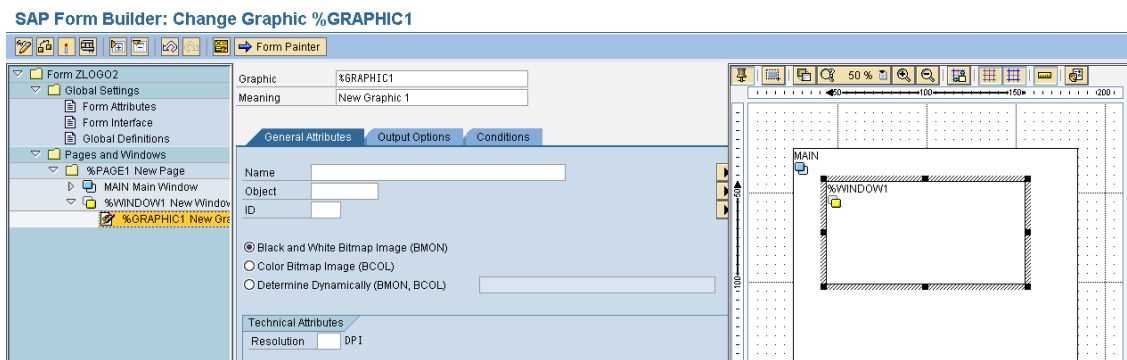
5. This will make a window in the top left, pick up the window and move it onto the MAIN window, then pull the drag-point on the bottom right to drag until larger.



6. Select the %WINDOW1 New Window node and Right-click, Select Create, Graphic



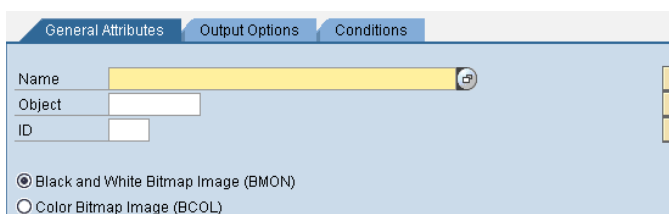
7. This will display the General Attributes tab for the selection of the graphic to be used.



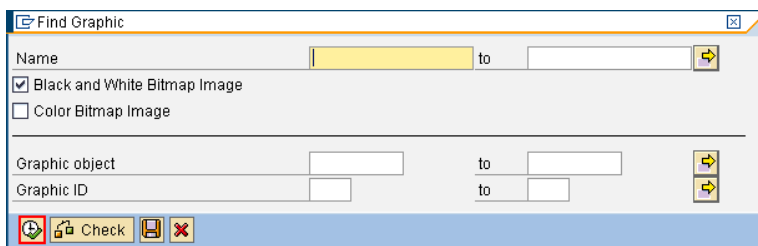
8. Select the Name field and then enter the name of the graphic, alternatively if you click in the field, the icon at the end of the line will allow you to view all the items on the system.

Please Note:

Before selecting the name ensure you have correctly chosen whether the graphic is Black and White or Color, if the item is Color and you have chosen Black and White it will not find it.



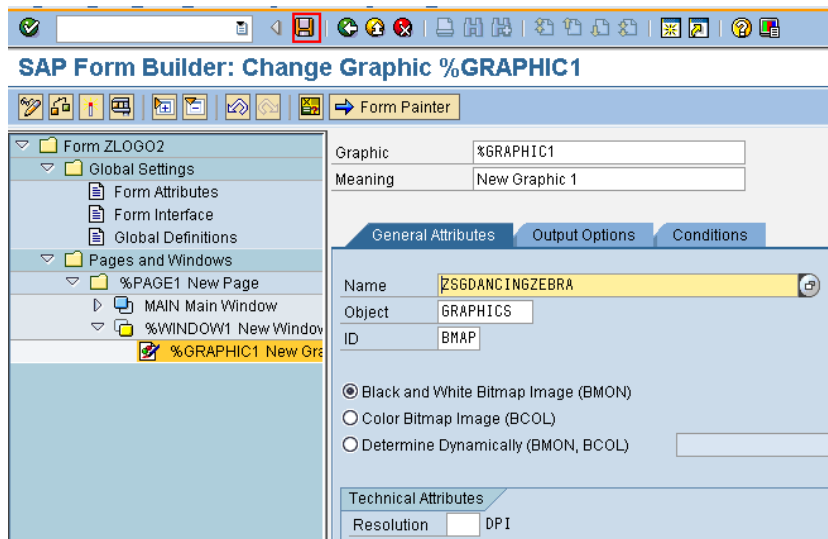
9. I have clicked into the Name field and then selected the selection icon at the end of the field.
10. Then I have selected the bottom left icon (Clock and Green Tick)



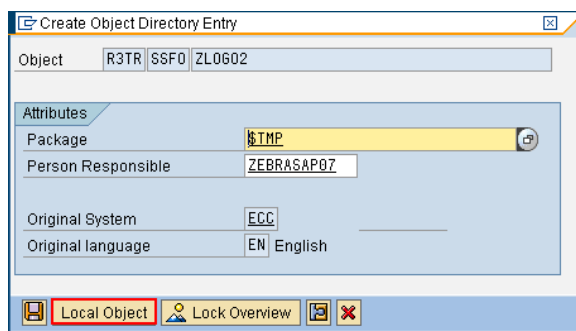
11. If I scroll to the end of the displayed list, On my system there are 3 Zebra items we have added:

| | |
|------------------|---|
| ZEBRA LOGO SMALL | GRAPHICS BMAP Black and White Bitmap Image ZEBRA LOGO SMALL |
| ZSGDANCINGZEBRA | GRAPHICS BMAP Black and White Bitmap Image |
| ZSGLOGO1 | GRAPHICS BMAP Black and White Bitmap Image |

12. I am selecting the ZSGDANCINGZEBRA. So I just double click on the name.
This will fill in the Name, Object & ID fields automatically.



13. Select the Save icon at the top of the screen.
14. The Create Object Directory Entry dialog box will be displayed.
Select the Local Object box



15. Then Select the Save icon again at the top of the screen.
The item is now stored and linked to the Smart Form.
16. To test print the Smart Form you will need to activate it and then can follow the standard test print process.
- This is what my printer prints when using this logo.

