



Exporting Smart Forms™ & Smart Styles from SAP®

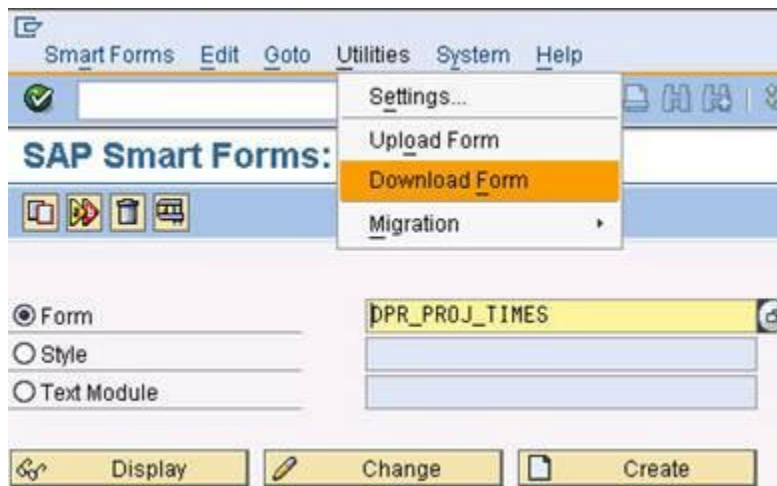
When using Smart Forms in a SAP system you would use Smart Style settings for each barcode, font and character used, this allows each customer the ability to manage their own settings and customise the data used for each Smart Form (or group of Smart Forms).

In order to ensure the Smart Form works or can be tested the Smart Style needs to be linked to each Smart Form and then activated.

This guide details the method of exporting the Smart Form and Smart Style files into an XML format to allow Zebra Technical Support or any customer to import for their own testing.

- **Exporting Smart Forms**

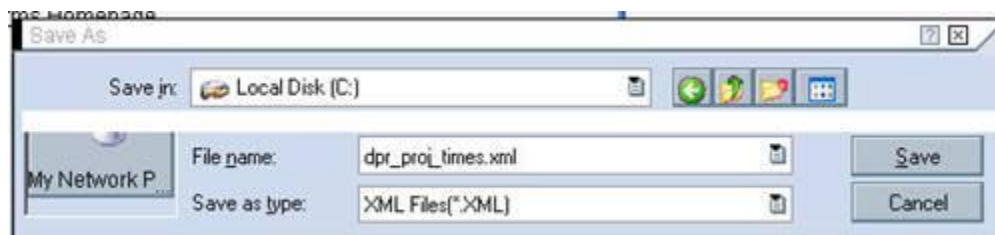
Go to Smart Forms and after entering the Form name select the Utilities, Download Form selection.



- Then ensuring the name is correct select the Green Tick.

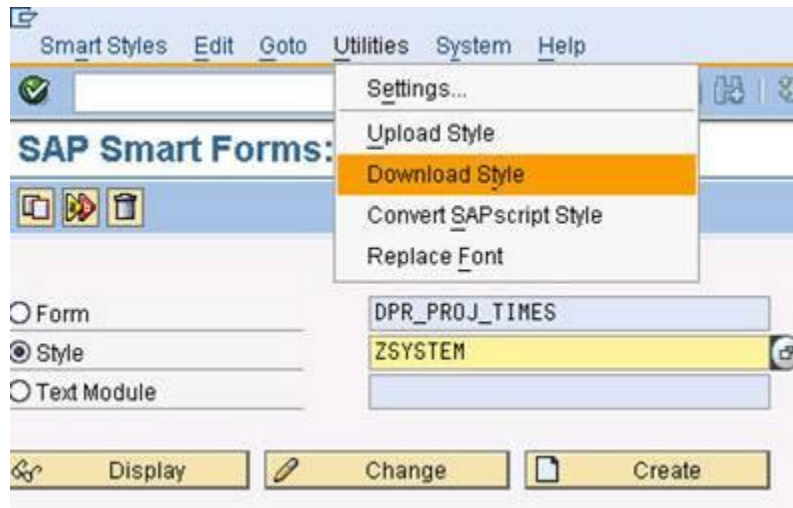


- This will show your Windows PC and directory structure so you can store the XML file. Once you have chosen where it will be select Save.

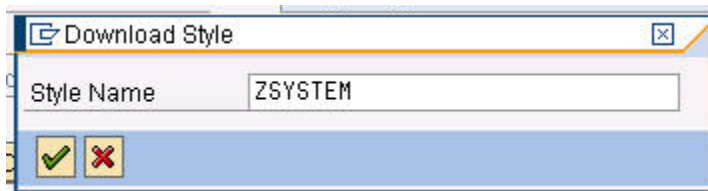


- **Exporting Smart Styles**

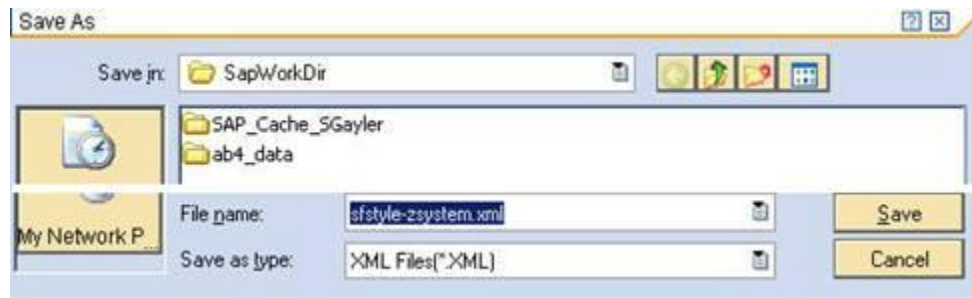
Go to Smart Forms and after entering the Style name select the Utilities, Download Style selection.



- Then ensuring the name is correct select the Green Tick.



- This will show your Windows PC and directory structure so you can store the XML file. Once you have chosen where it will be select save.



Please Note:

It is always a good recommendation to keep an image of the printed label output on file. This can assist any additional support you require from the Zebra Technical Support team to help understand what the output should look like when reviewing on a generic SAP test system.