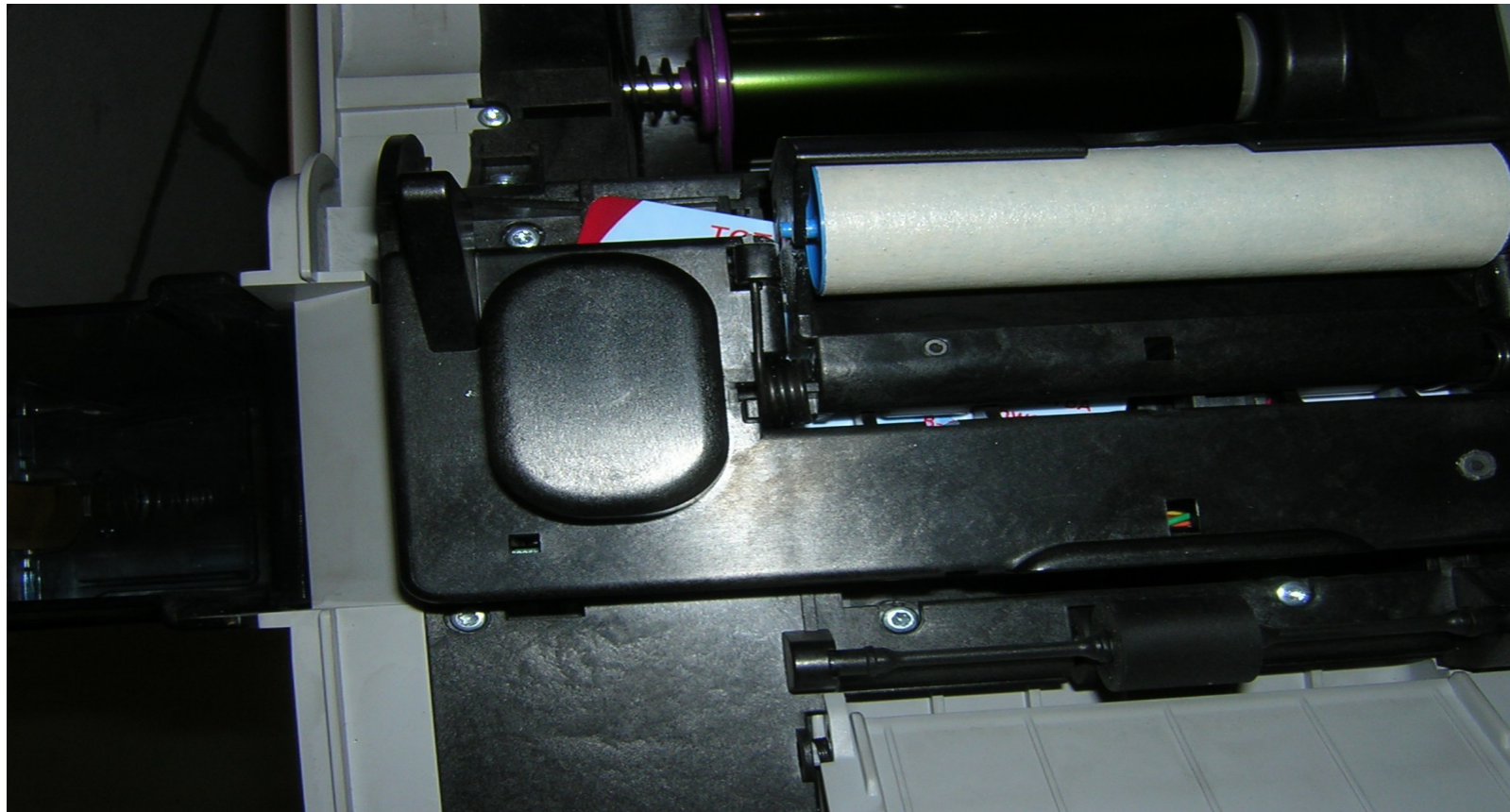


ZXP S8  
Card Center  
X and Y offsets

J. Pavan  
Jan 2013

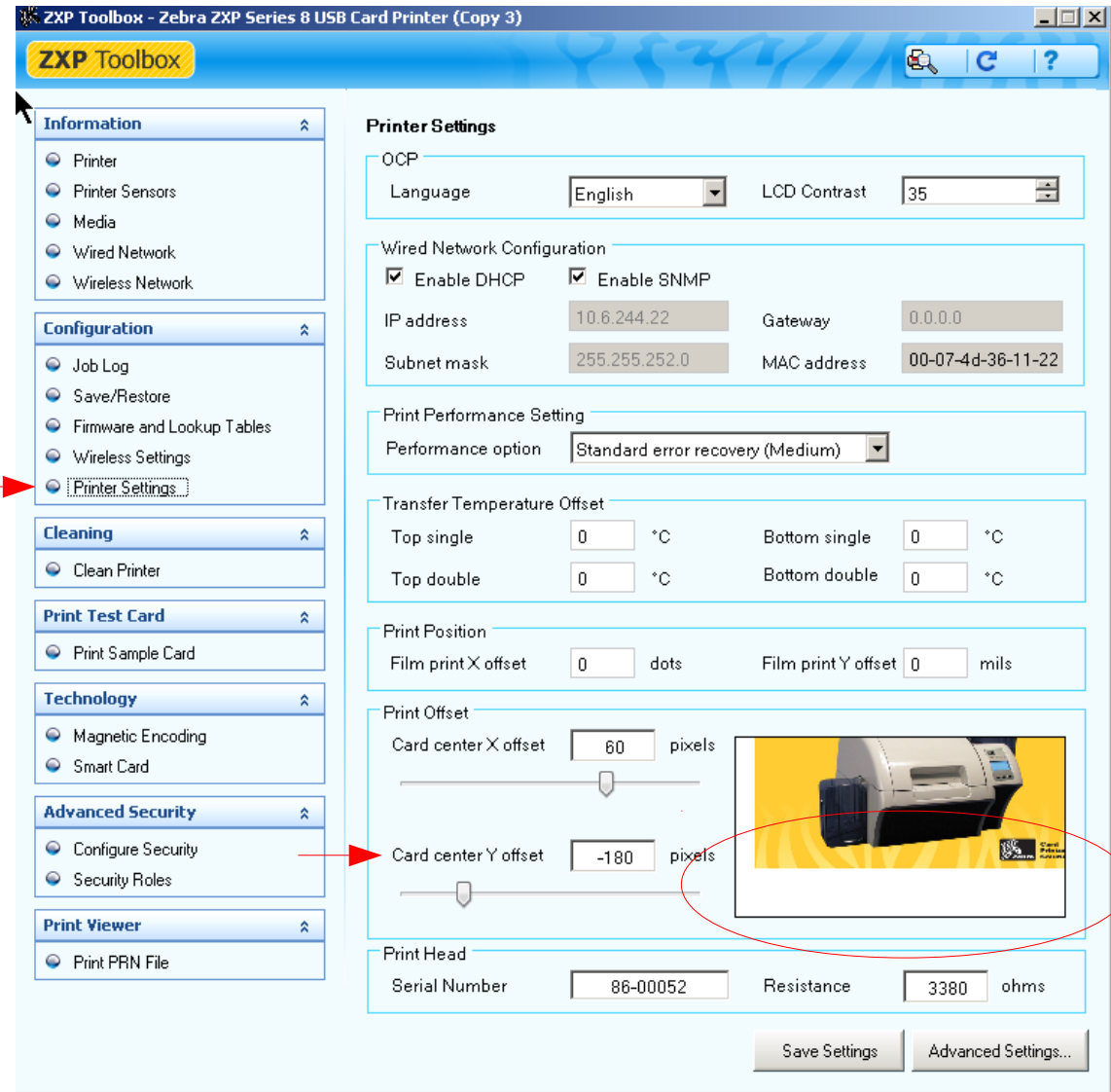
# Issue

When the card jams on its way out, check the X and Y offsets are as shown on next slide. You may see “CARD JAM” error on the OCP.



# Correct Parameters

Check the X and Y offsets in ZXP Toolbox, Printer Settings. The X can vary slightly from printer to printer (60 in this case). The Y **MUST** be at -180. If it is not at -180, make it so. The picture will NOT be centered inside the frame. **THIS IS NORMAL.**



# Incorrect Parameters

**DO NOT** adjust the X and Y offsets to center the picture in the frame. Doing so will result in the card jamming.

