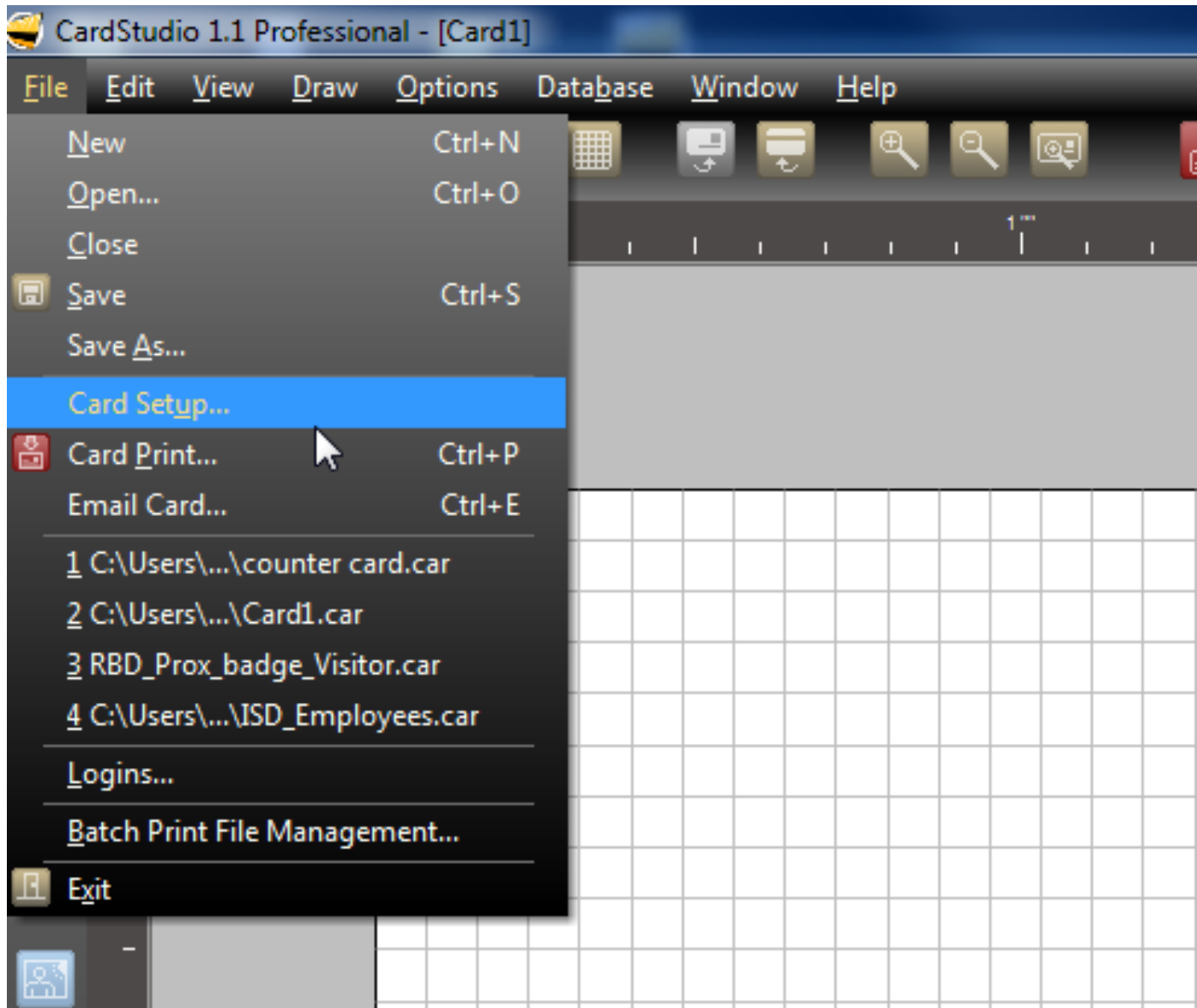
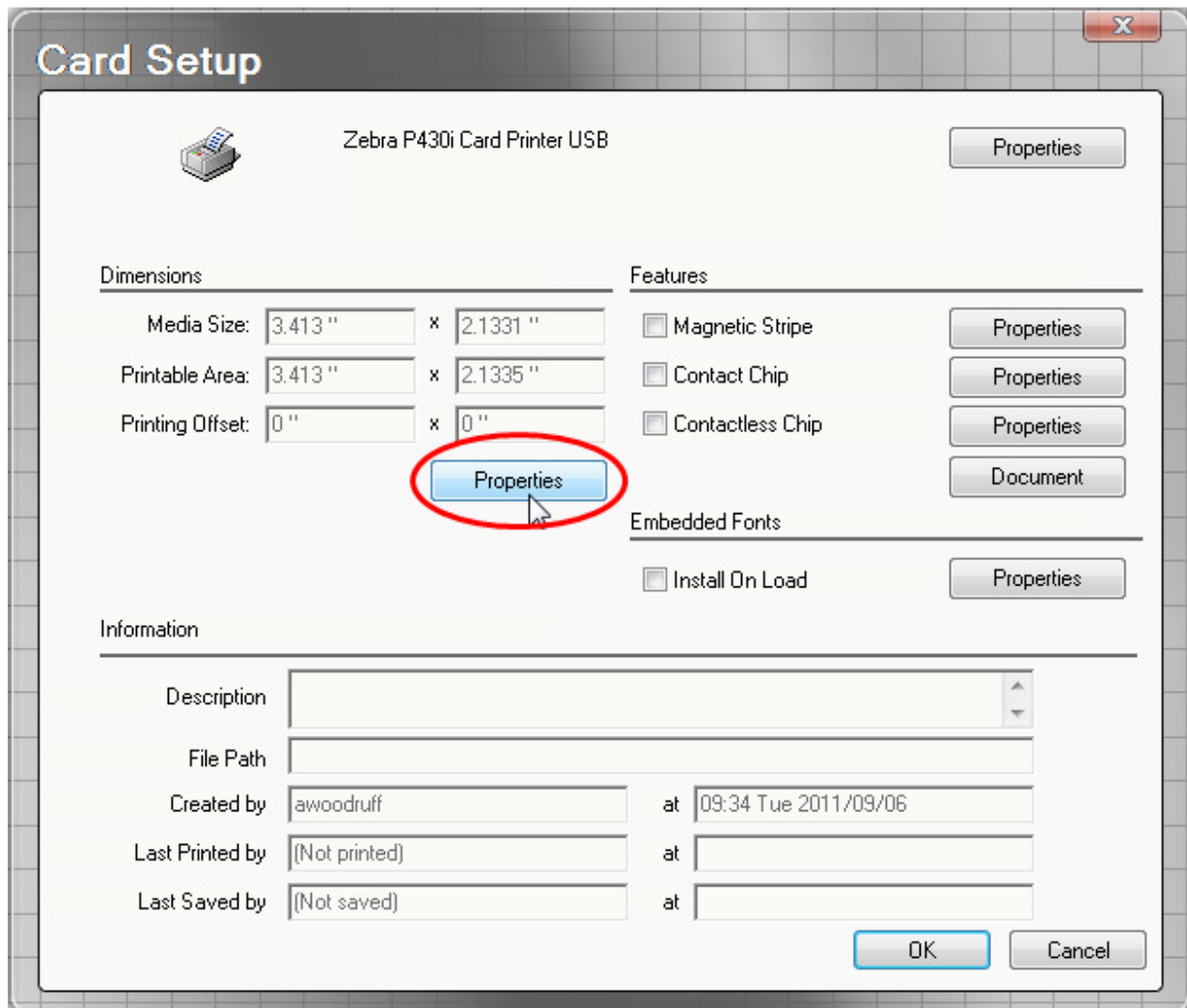


How to change from Landscape to portrait in Card Studio

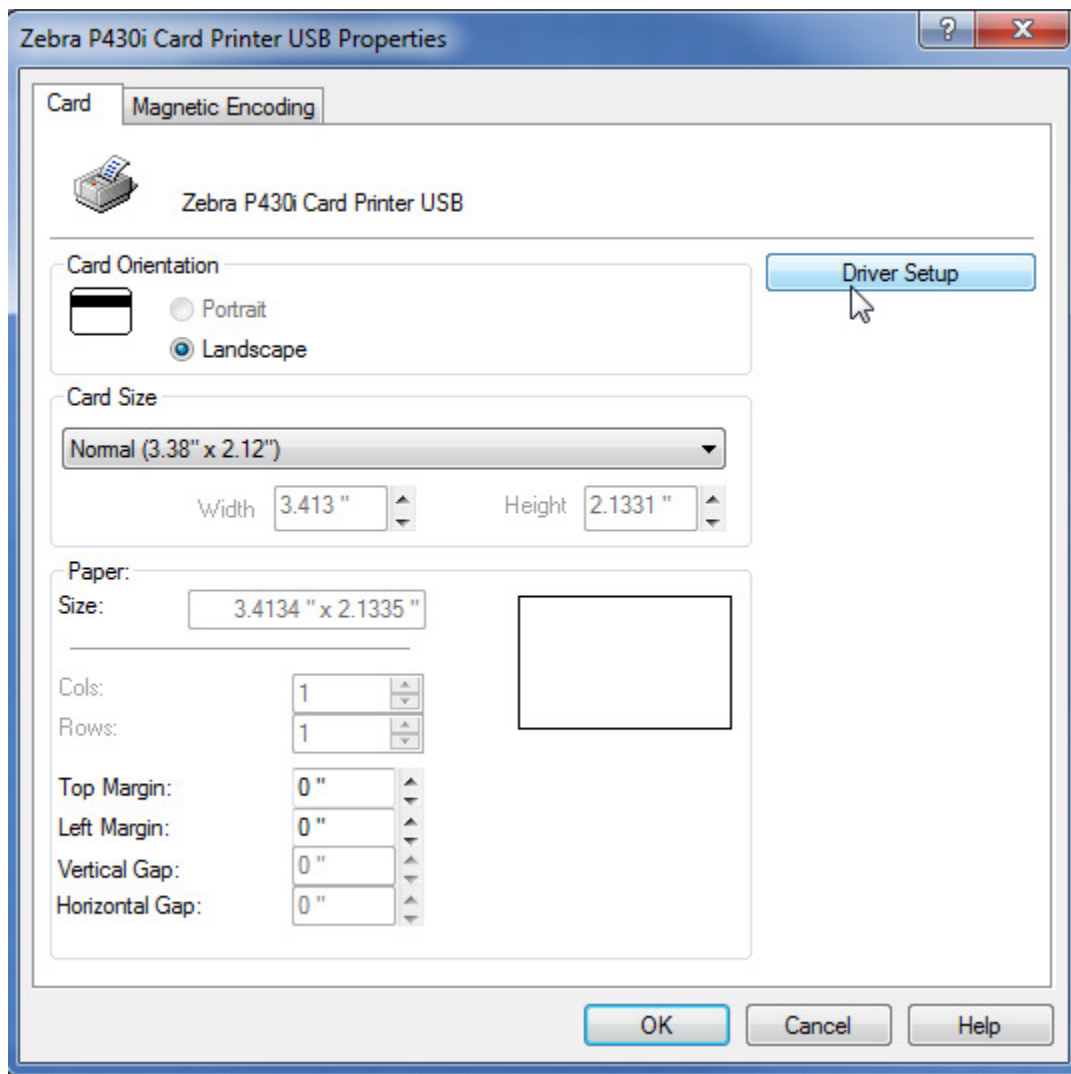
Before creating your card you will need to click on File and choose “Card Setup.”



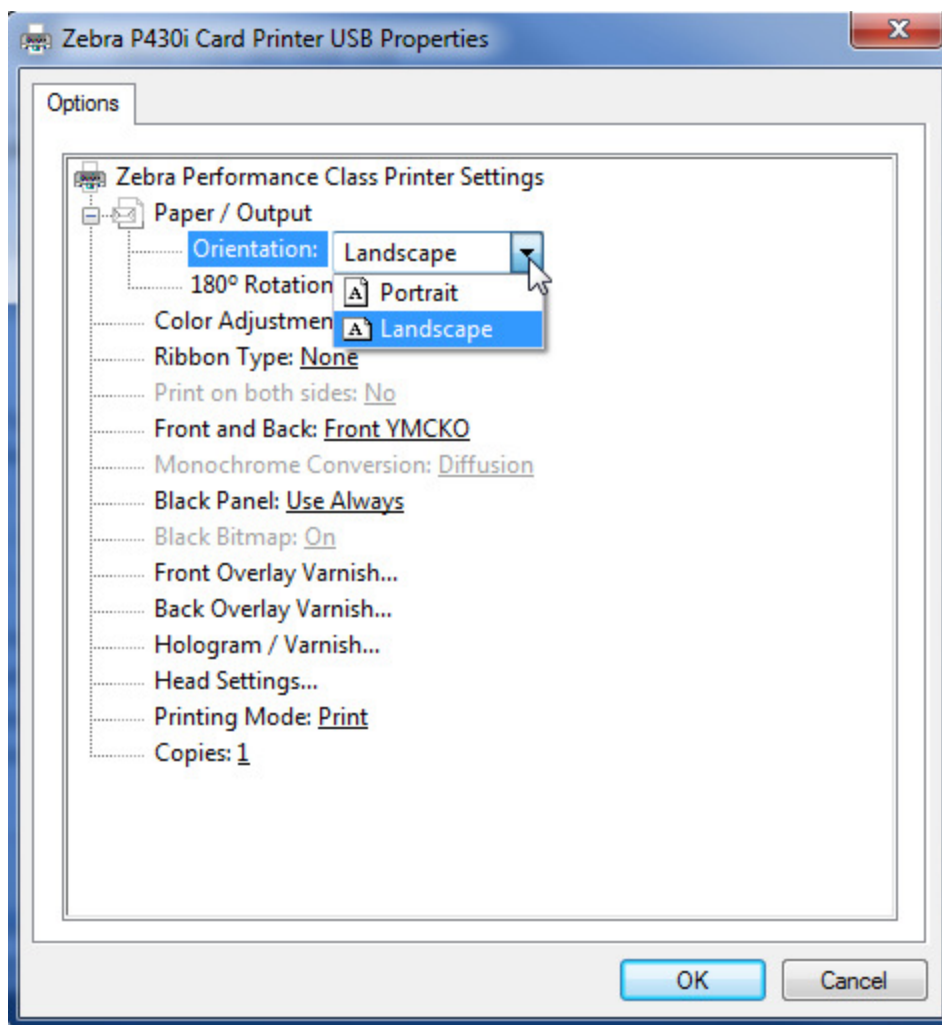
Then, you will need to select “Properties.”



Then you will select “Driver Setup”



In the next window you will need to select your orientation.



Click okay on this screen, and the following screen. After doing so you will be asked to rotate the existing objects on the card or not. In this example we did not create anything on the card so any option is okay. Had you placed a text field or image on the card first, it would then be rotated according to your selection.

