

ZXP Series 3 Tech Note

Image Offset Adjustments



Introduction



Important • Before making any image offset adjustments, check the size of your image. The ZXP Series 3 image size is 1024 x 640. If your image is a different size:

- Resize the image to 1024 x 640.
- or -
- Ensure that your print application fits the image to the card.

This Tech Note explains how to change the X and Y offsets and modify the End of Card (EC) setting for the ZXP Series 3 Card Printer.

Use the X and Y offsets to center the image on the card, or to align the image with an edge. Use the EC setting to move the edge of the image away from or closer to the trailing edge of the card.

Overview

This Tech Note contains the following sections:

Access the Tools Display	3
Change the Front X and Y Offsets	4
Change the Back X and Y Offsets	5
Change the EC Setting	6

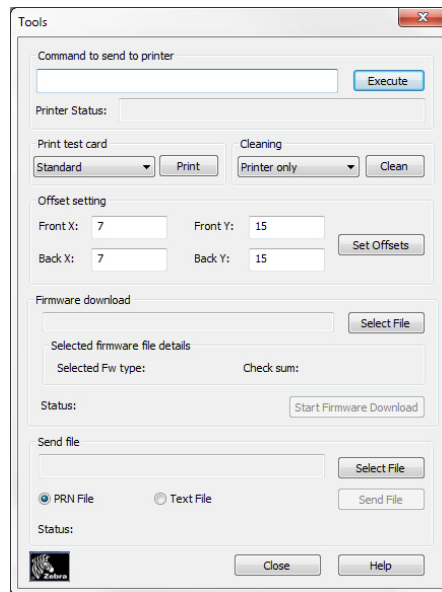


Caution • Adjustments too close to the leading and/or trailing edge of a card may cause ribbon breaks. The closest that an image can be to the leading edge is 0.2 mm. The closest that the image can be to trailing edge is 0.2 mm when set at mid-roll of ribbon.

- To reduce leading-edge white space, decrease the X-offset value; see page 4 and/or 5.
- To reduce trailing-edge white space, decrease the EC value.

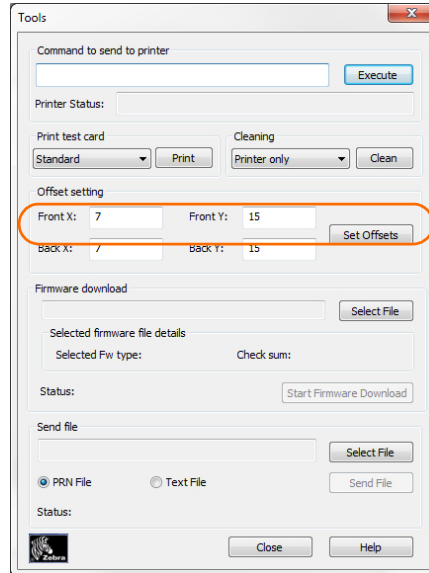
Access the Tools Display

- Step 1.** Go to Start > Devices and Printers.
- Step 2.** From the Printers and Faxes list, right click the Zebra ZXP Series 3 Card Printer; and select **Printer Properties** from the pop-up menu.
- Step 3.** The **Printer Properties** window will open.
- Step 4.** Select the Device Settings tab, and click on the **Tools** button.
- Step 5.** This brings up the Tools display, shown below. Use this dialog box to change the X and Y offsets and to modify the End of Card (EC) setting.

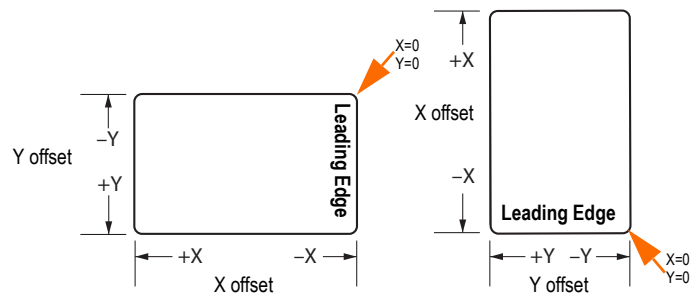


Change the Front X and Y Offsets

Use the Tools dialog box to change the front X and Y offsets.



Front X: This is the number of mils to shift the image along the **long axis** to align it on the card; see figure below. This parameter can be used to center the image on the card, or to align it with an edge. Change the value ($\pm X$) to move the image in the direction indicated in the figure below. The adjustment range is: Min 0, Max 31.



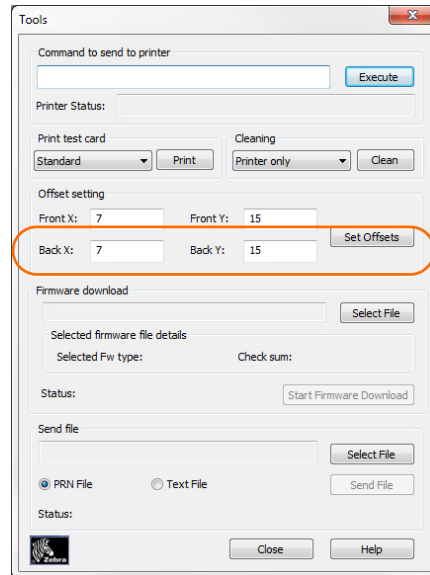
NOTE: The Leading Edge exits the printer first.

Front Y: This is the number of mils to shift the image along the **short axis** to align it on the card; see figure above. This parameter can be used to center the image on the card, or to align it with an edge. Change the value ($\pm Y$) to move the image in the direction indicated in the figure above. The adjustment range is: Min 0, Max 31.

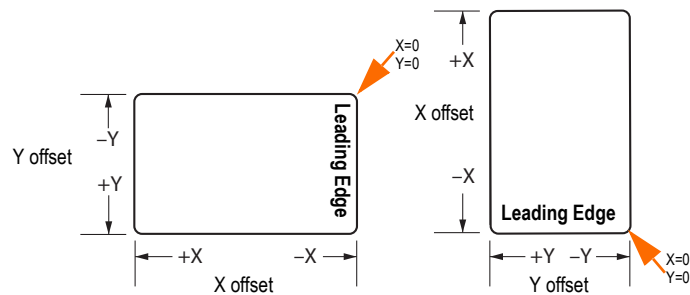
Enter the new settings in the corresponding Front X and Front Y text fields, and click the **Set Offsets** button. When the Warning/Confirmation popup appears, click the **Yes** button to confirm the change; click the **No** button to abandon the operation.

Change the Back X and Y Offsets

Use the Tools dialog box to change the back X and Y offsets.



Back X: This is the number of mils to shift the image along the **long axis** to align it on the card; see figure below. This parameter can be used to center the image on the card, or to align it with an edge. Change the value ($\pm X$) to move the image in the direction indicated in the figure below. The adjustment range is: Min 0, Max 31.



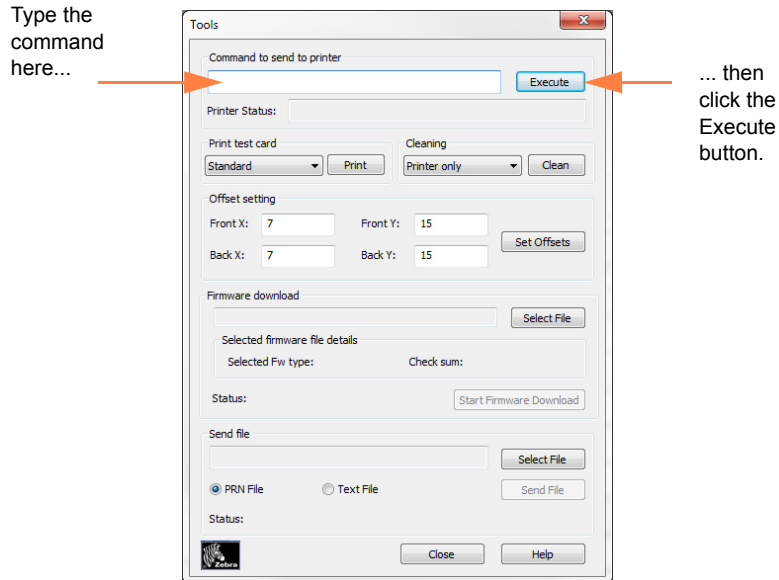
NOTE: The Leading Edge exits the printer first.

Back Y: This is the number of mils to shift the image along the **short axis** to align it on the card; see figure above. This parameter can be used to center the image on the card, or to align it with an edge. Change the value ($\pm Y$) to move the image in the direction indicated in the figure above. The adjustment range is: Min 0, Max 31.

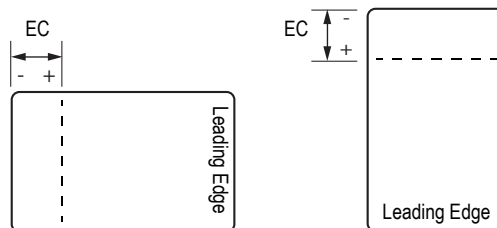
Enter the new settings in the corresponding Back X and Back Y text fields, and click the **Set Offsets** button. When the Warning/Confirmation popup appears, click the **Yes** button to confirm the change; click the **No** button to abandon the operation.

Change the EC Setting

Use the Tools dialog box to modify the End of Card (EC) setting.



- Step 1.** In the *Command to send to printer* field, type the End of Card (+EC) command; and click the **Execute** button.
- Step 2.** Observe the current EC value in the *Printer Status* text box directly below the *Command to send to printer* field; e.g., 5 <ACK>.
- Step 3.** Print a sample card, then examine the card, and determine the new EC value: decrease the current value to move the image edge closer to the card edge, increase the current value to move the image edge away from the card edge. The adjustment range is: Min 0, Max 48.



NOTE: The Leading Edge exits the printer first.

- Step 4.** In the *Command to send to printer* field, type +EC, a space, and the new EC value; and click the **Execute** button.
- Step 5.** Print another sample card, then examine the card and determine the effect of the changed EC value.
- Step 6.** If you are not satisfied with the change, repeat Steps 3 through 5; otherwise the EC adjustment is complete.
- Step 7.** To save the EC setting, type SDATA; and click the **Execute** button.