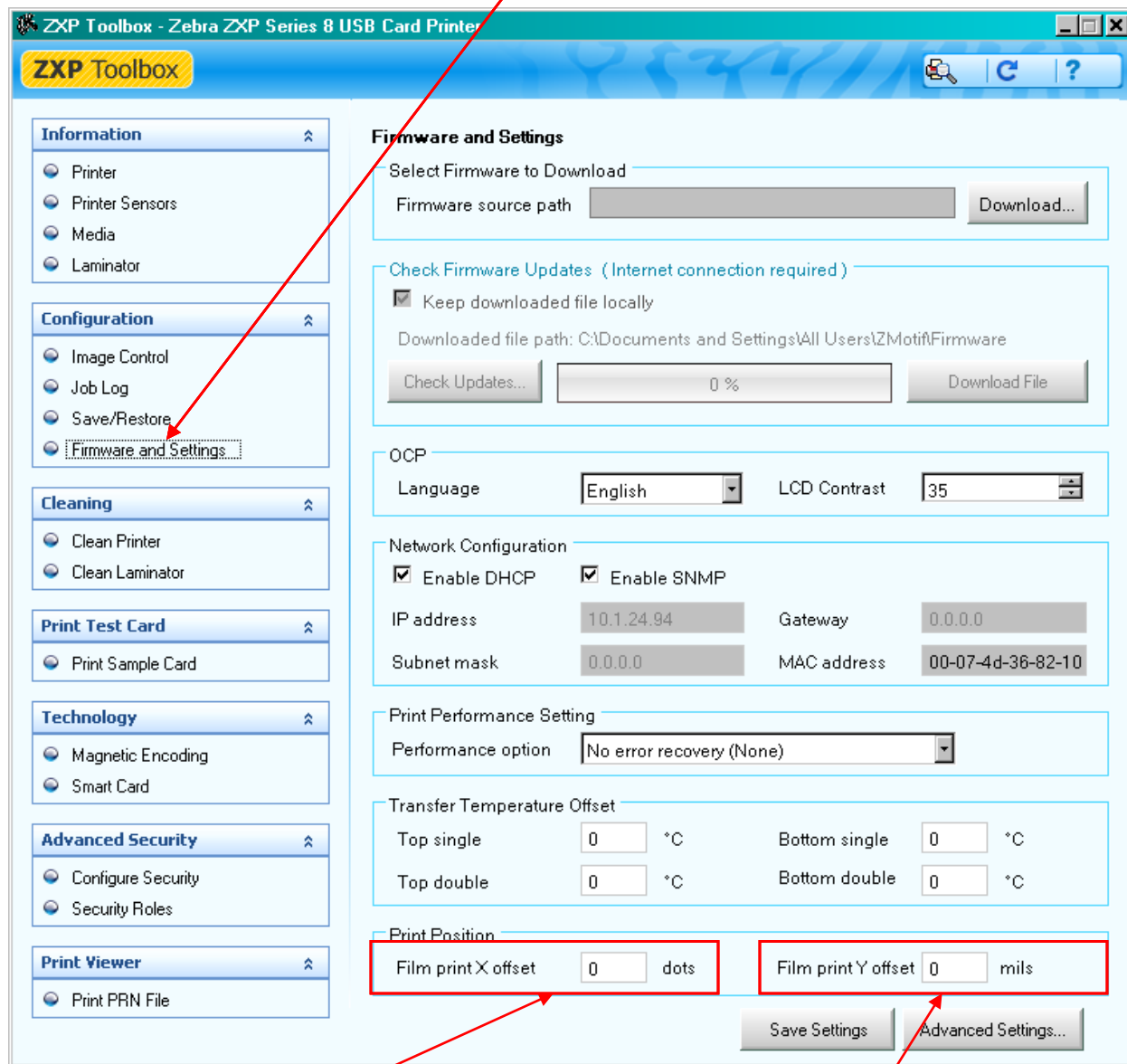


ZXP Series 8 Card Printer

Setting X and Y offsets

Open the ZXP Toolbox and select "Firmware and Settings"



Film print X offset (dots):

This is the number of dots (300 dpi / ~3 mils/dot.) to shift the image to align it on the media. Increasing these values move the image right while decreasing them moves the image left. This parameter can be used to center the image on the card, or to align it with an edge. The adjustment range is: Minimum -50, Maximum 50.

Film print Y offset (mils):

This is the number of mils to shift the image to align it on the media. Increasing these values moves the image up while decreasing them moves the image down. This parameter can be used to center the image on the card, or to align it with an edge. The adjustment range is: Minimum -100, Maximum 100.