

Restricting user rights on your system

System lock down

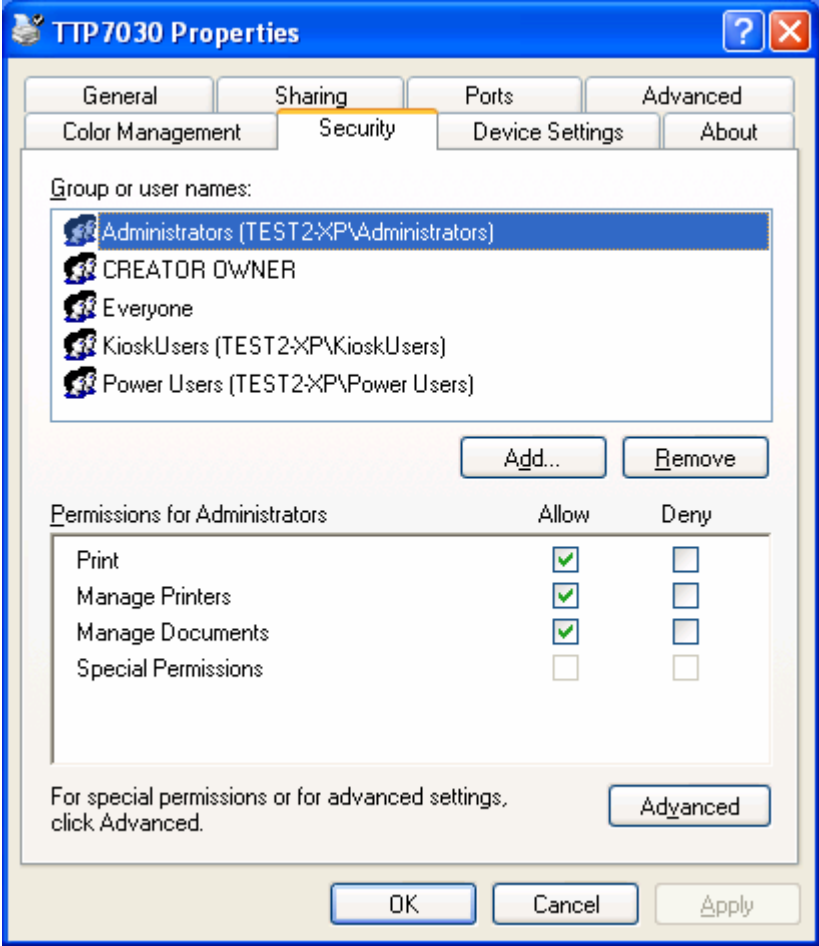
In some situations you may want to lock down the system since the kiosk is in remote locations and you don't want the user to have too much permission.

When you run your application as a restricted user, you may find that some or all of the features you are trying to use are not working anymore, such as status monitoring.

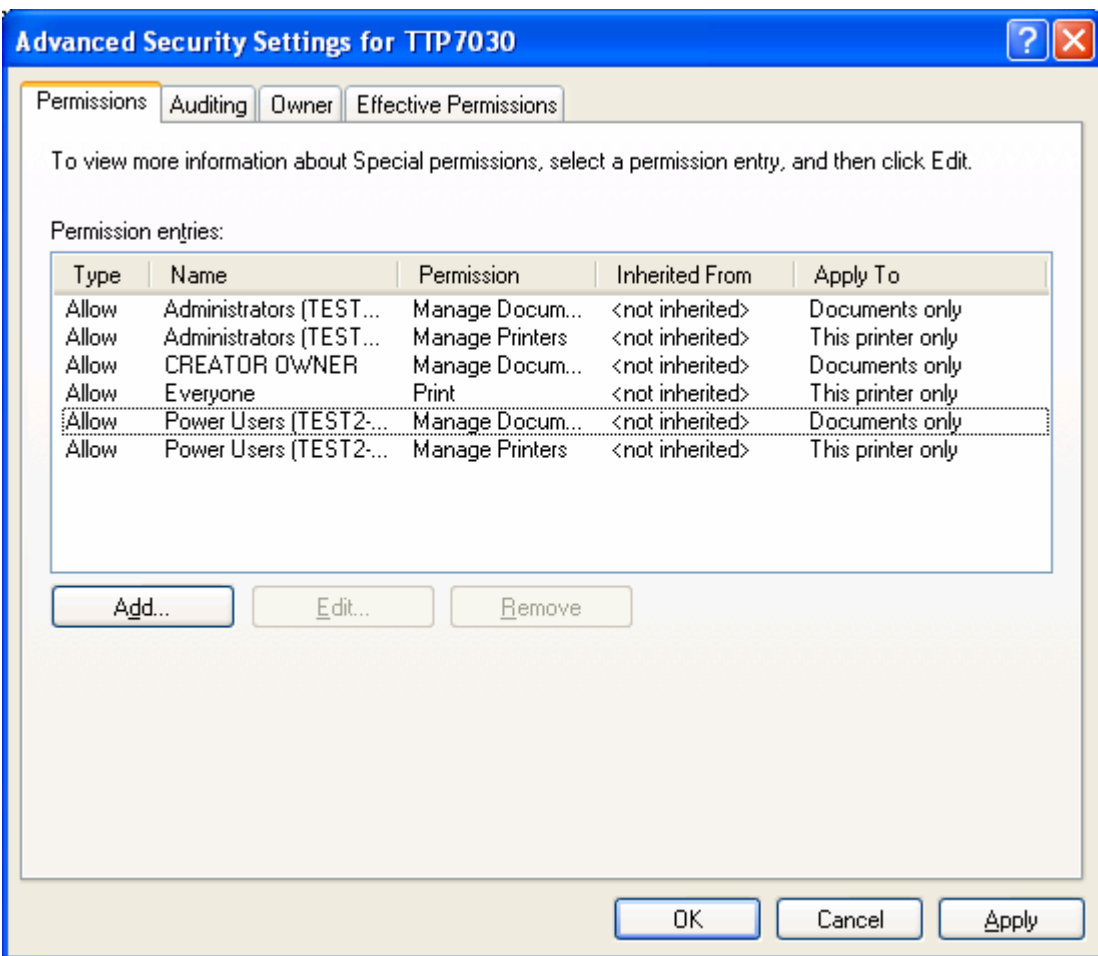
You need to change user permissions to resolve this problem. In order to do this you need to have administrative rights on this PC.

Changing user permissions

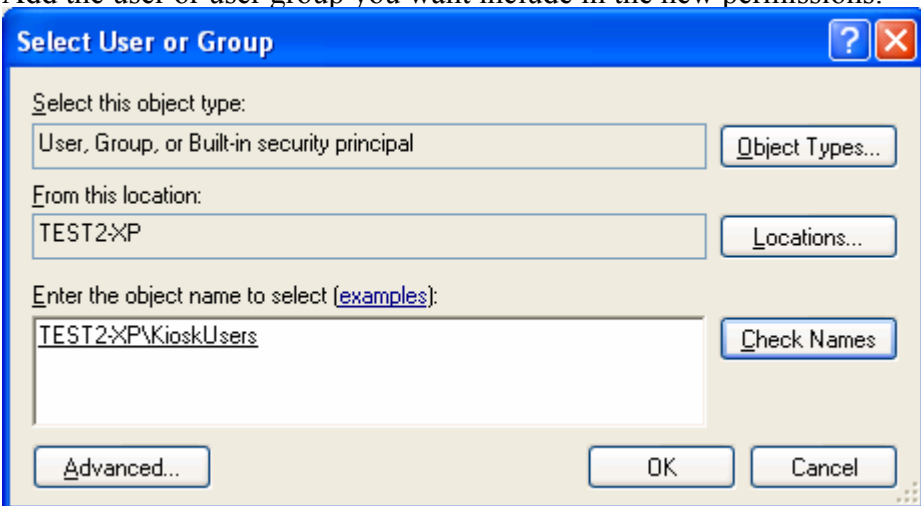
Open the printer properties and select the Security tab.

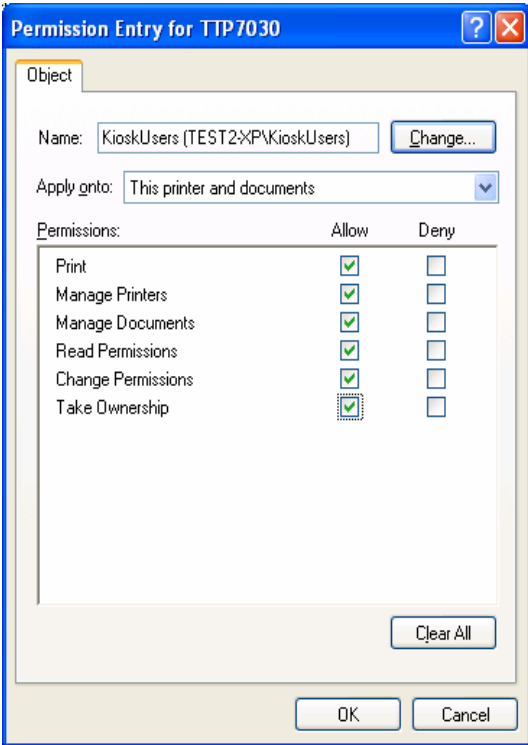


Select Advanced.

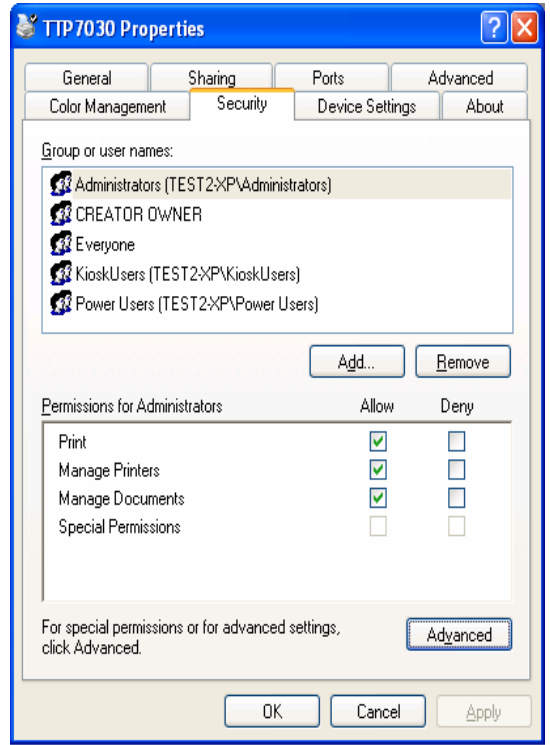


Add the user or user group you want include in the new permissions.





Give the user or group all permissions for the printer.



The new user will appear in the Security window and have Print, Manage Printer and Manage Document rights.

When you now try to use the Language Monitor features or other special printer features you will see that it works as if you were logged in as an administrative user.