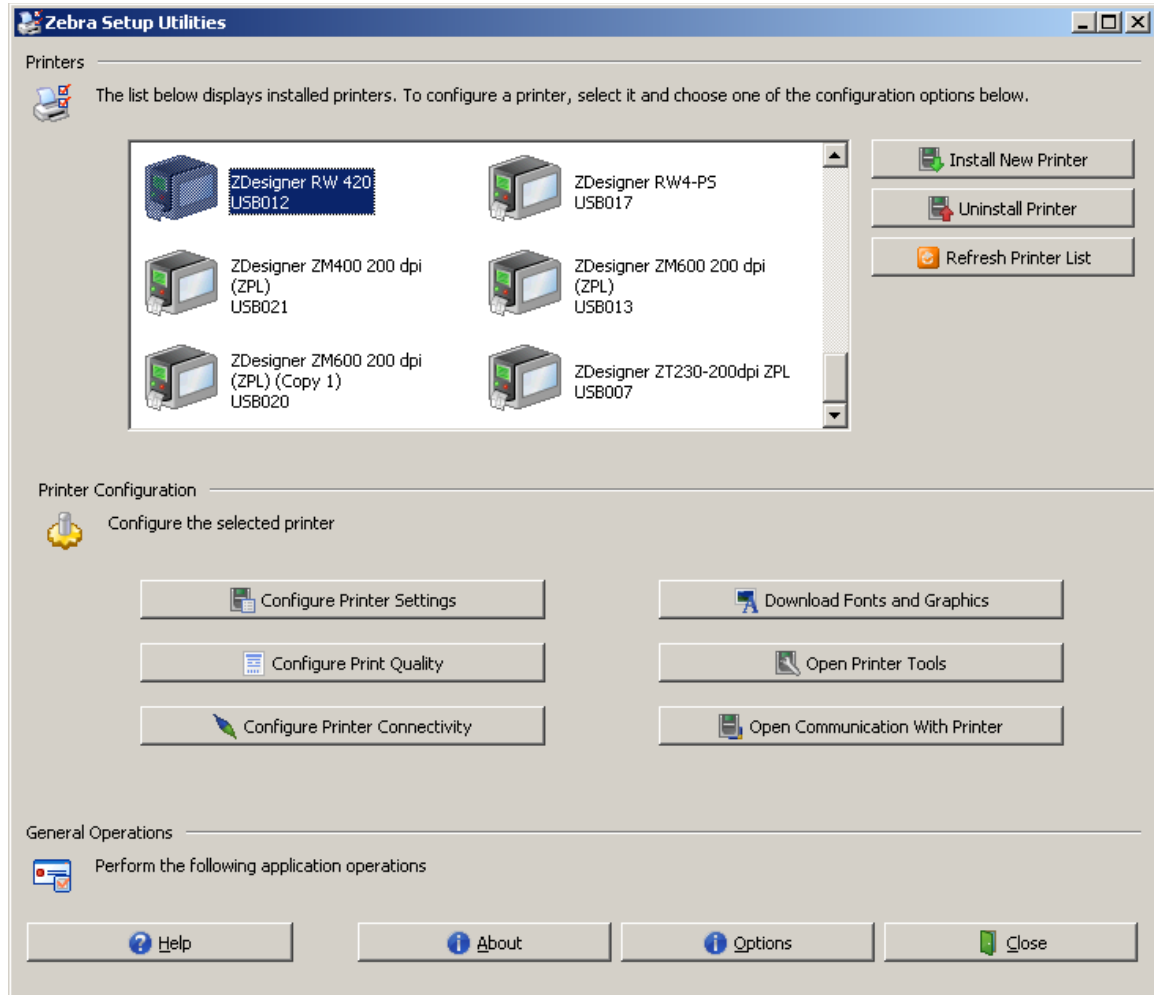
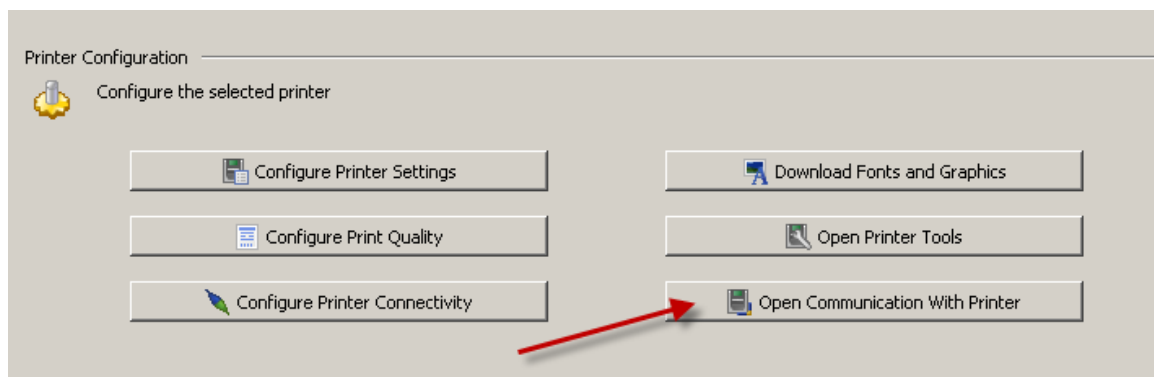


The Zebra Setup Utilities Program can be used to test the Magnetic Card Reader on the Road Warrior Series Printers.

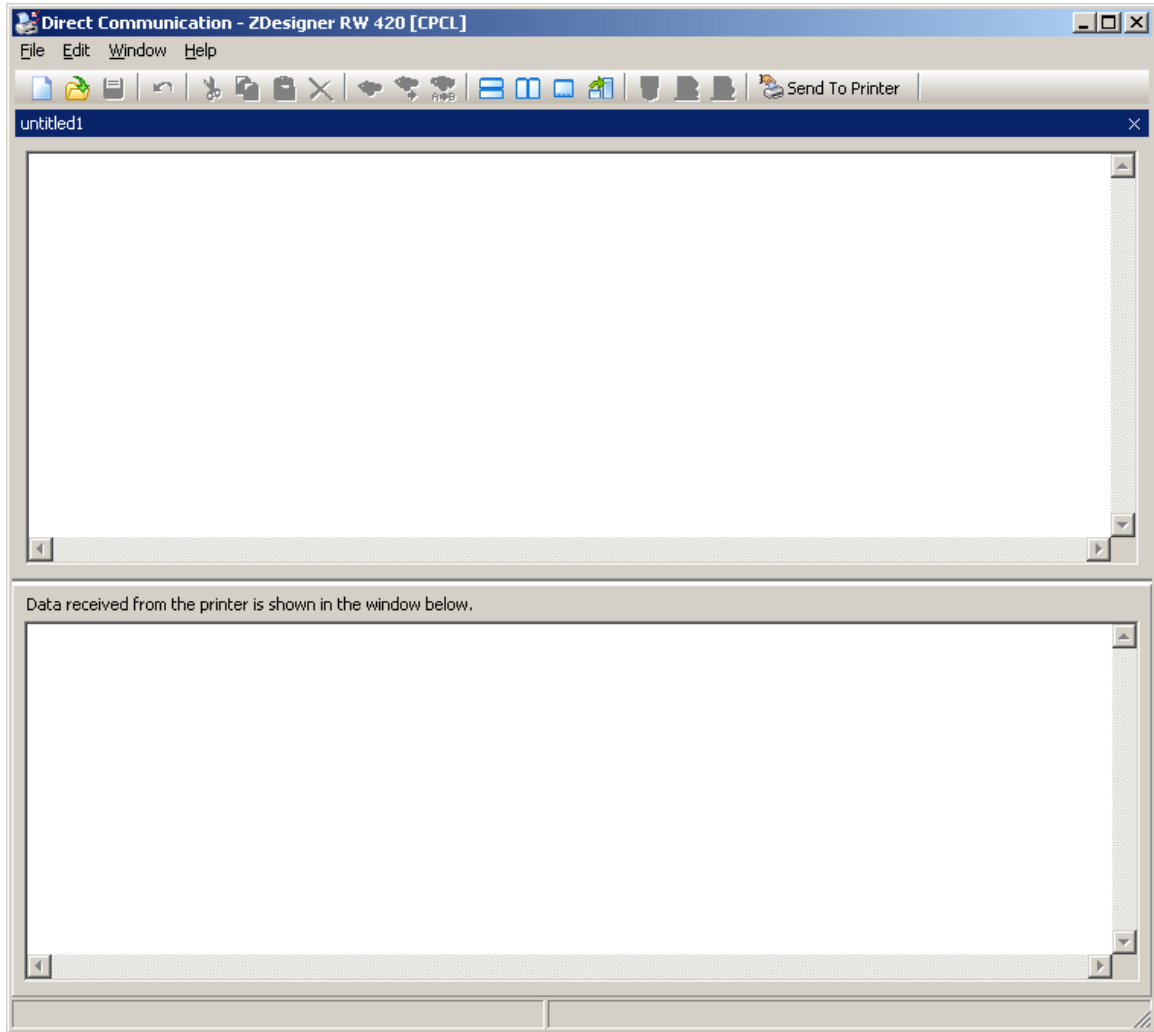
The screenshot below shows the initial screen of the Zebra Setup Utility and how one can choose a Road Warrior Printer.



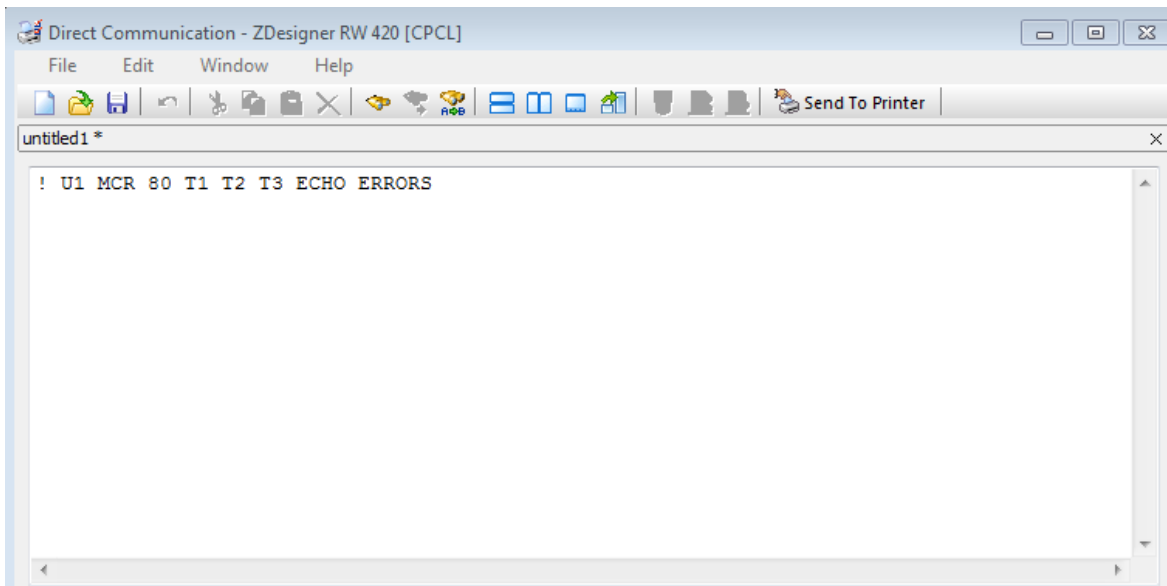
Once the Road Warrior Printer has been chosen, click on the “Open Communications With Printer” button as shown below.



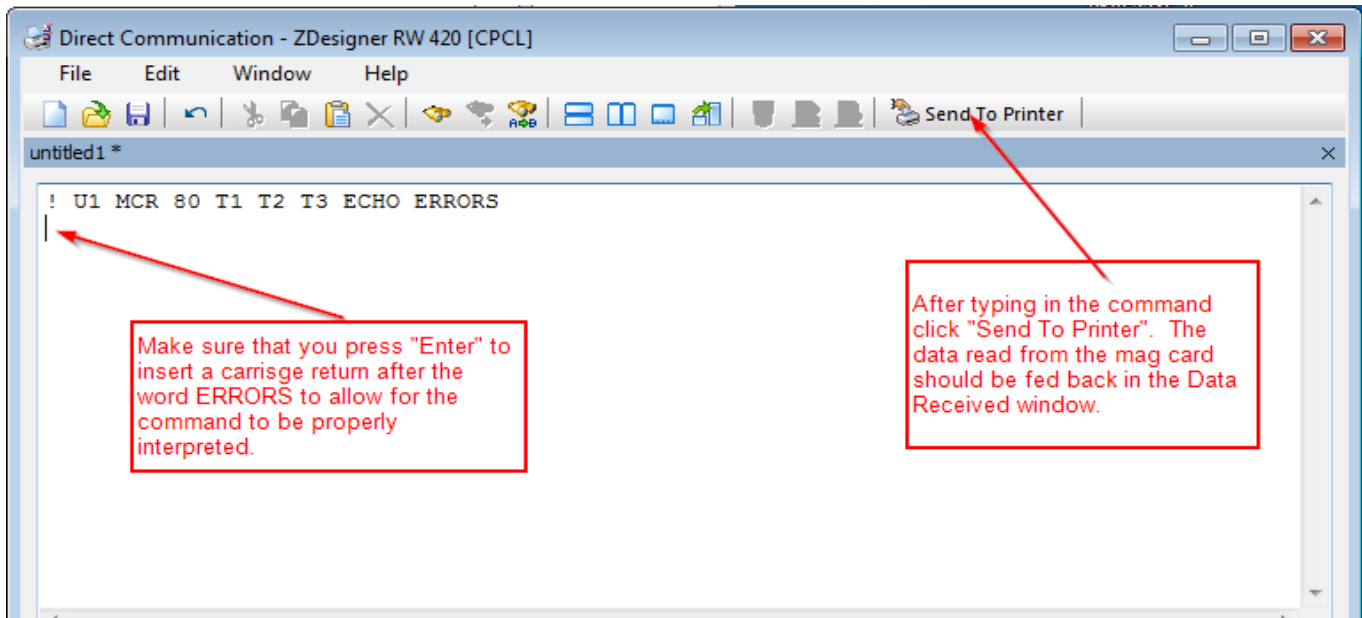
A communications window will allow you to type in commands and also receive data from the printer.



The following commands can be sent to the printer to test the Magnetic card reader.  
**! U1 MCR 80 T1 T2 T3 ECHO ERRORS**



The ECHO parameter allow the data that is read from the card to be read back in the data received window.



The recommended steps are below:

1. Ensure communication with the printer via your Zebra Setup Utilities by using "Open Printer Tools" and sending a "Feed One Label" command.
2. Once communication is verified, use "Open Communication with Printer" to allow for read of the magnetic card.
3. When the "Open Communication with Printer" option is open, type in the command:

! U1 MCR 80 T1 T2 T3 ECHO ERRORS

- Send the command to the printer
- After sending the command, swipe your Mag Card
- Send the command again and after sending the command the second time you should receive the data from the Mag Card back in the Data Received Window.