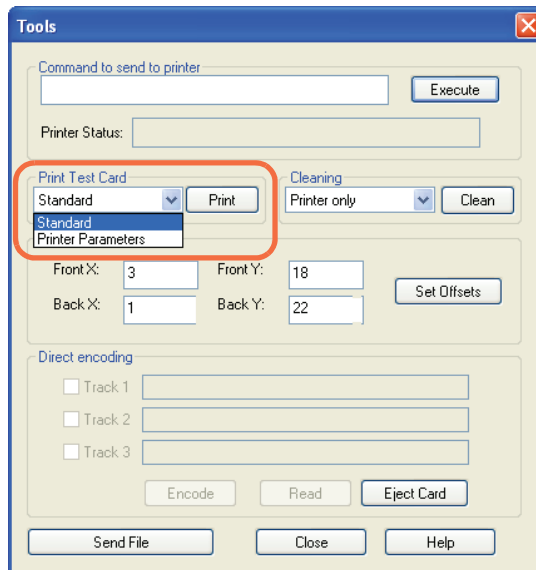


## 2.11 Print a Test Card

With ribbon cartridge and cards loaded, your printer is ready to print. To check the operation of the printer, you should print a test card.

**Step 1.** Go to the Driver **Tools** tab ( Select *Start > Settings > Printers and Faxes*. Right click on the *Zebra ZXP Card Printer* listing. Select *Properties > Device Settings > Tools* ).



**Step 2.** From the Print Test Card dropdown menu, select the desired test card (circled above).

- Standard
- Printer Parameters
- Encoder Parameters

**Step 3.** Click on the **Print** button; see sample test cards below.

Standard:



Printer Parameters

