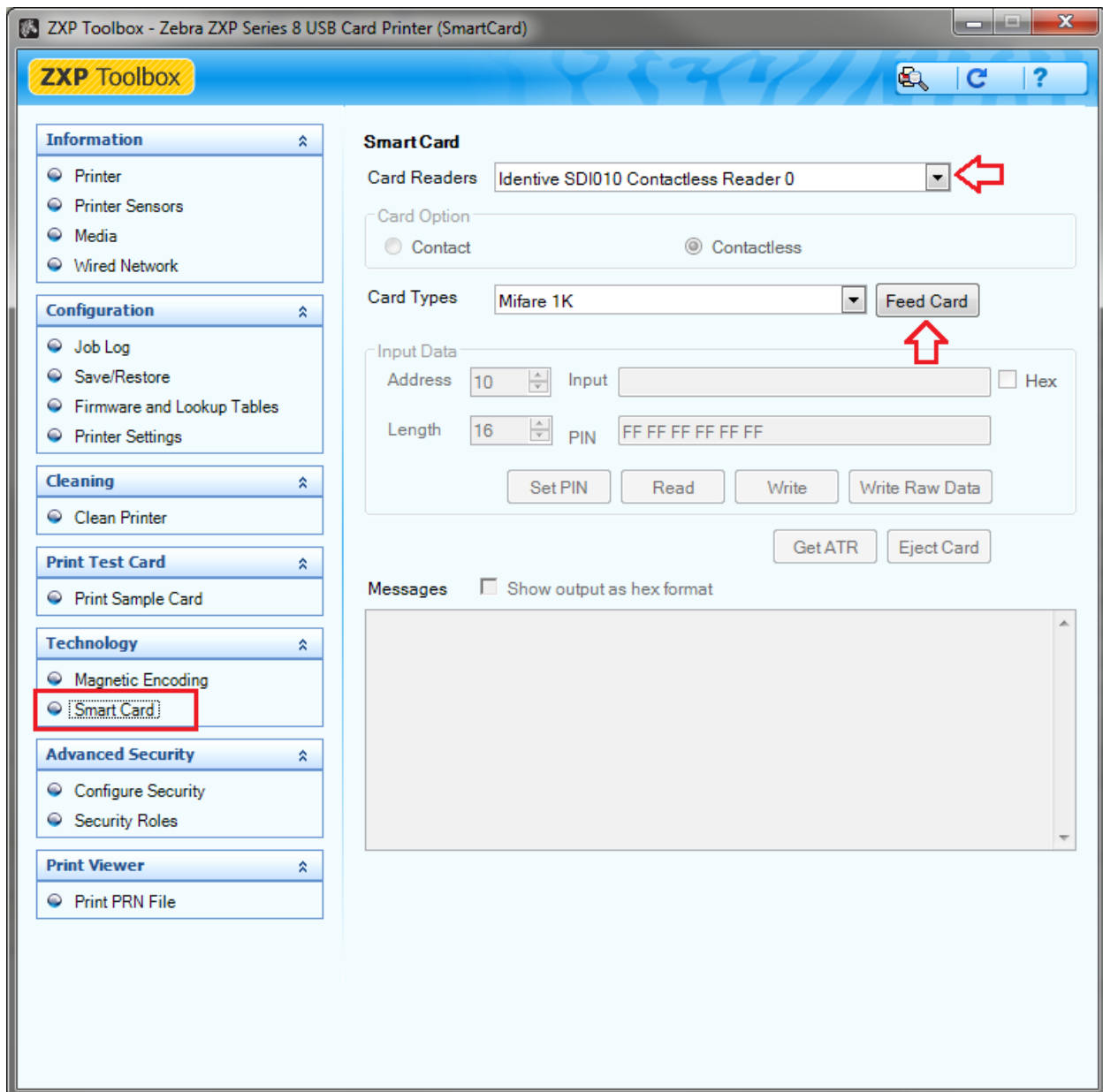
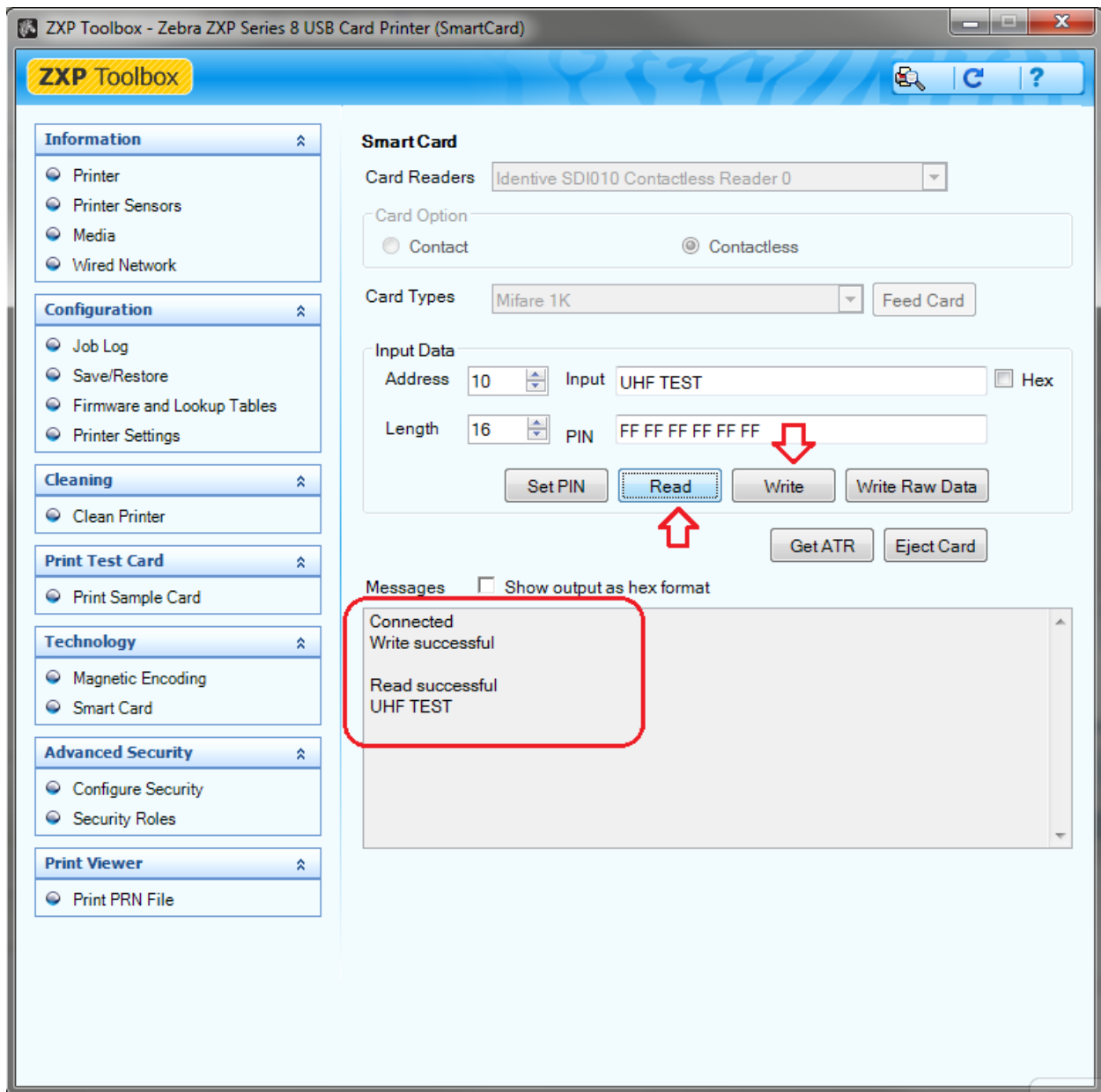


## Testing the Smart Card Option Using the ZXP Toolbox

1. Go to the printer's **Toolbox**:
  - a. From **Windows XP**: Go to Start> Settings> Printers and Faxes. Right click on the ZXP Series 7 driver and select Properties> Device Information> ZXP Toolbox
  - b. From **Windows 7**: Go to the Windows Icon> Devices and Printers. Right click on the ZXP Series 7 driver and select Printer Properties> Device Information> ZXP Toolbox
2. Select the **Smart Card** option under the **Technology** section
3. Choose the type of Smart Card option your printer has under **Card Readers** (if it has contact and contactless combo)



4. Select your smart card type. Place the card in the hopper and click **Feed Card**



5. Type your data under **Input** and click **Write**. The **Messages** box will show if writing was successful
6. You can use the **Read** button to verify the data was encoded successfully
7. This completes the smart card test

**NOTE:** For additional **Input Data** settings information, please refer to the printer's user's manual