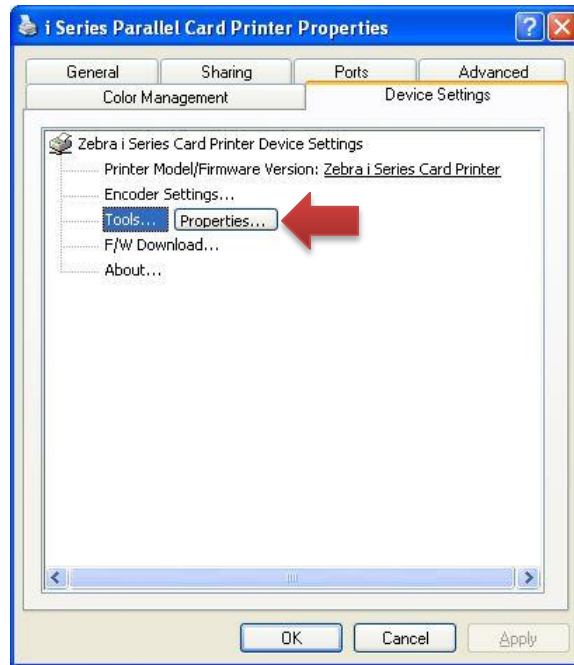
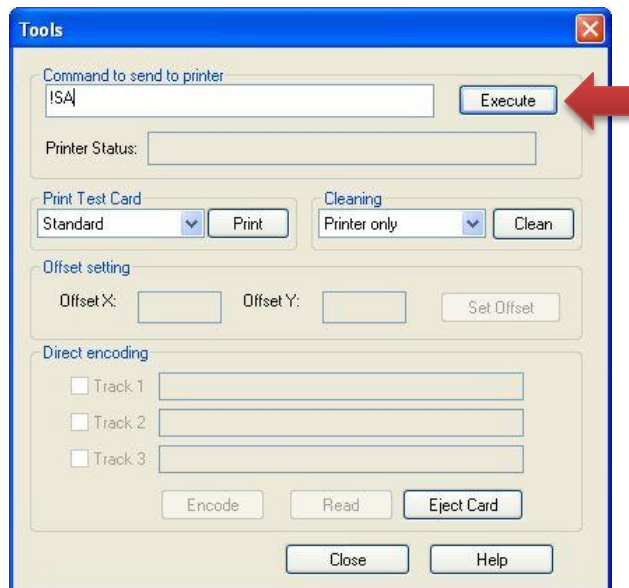


Calibrating the Printer's Color Sensor

1. Make sure ribbon is installed, printer is turned on and connected to the PC
2. Place a card in the feeder
3. Go to the **Start > Printer and Faxes**. Right-click on your printer, then go to **Properties> Device Settings> Tools> Properties**.



4. Type **!SA** under "Command to send to printer" and click **Execute**. A blank card will feed in, then out of the printer. The ribbon will start spinning and calibrating.



5. After a few seconds, the printer will display **READY**
6. This completes the calibration process.