



Z-TECH NEWSLETTER Q1 2016

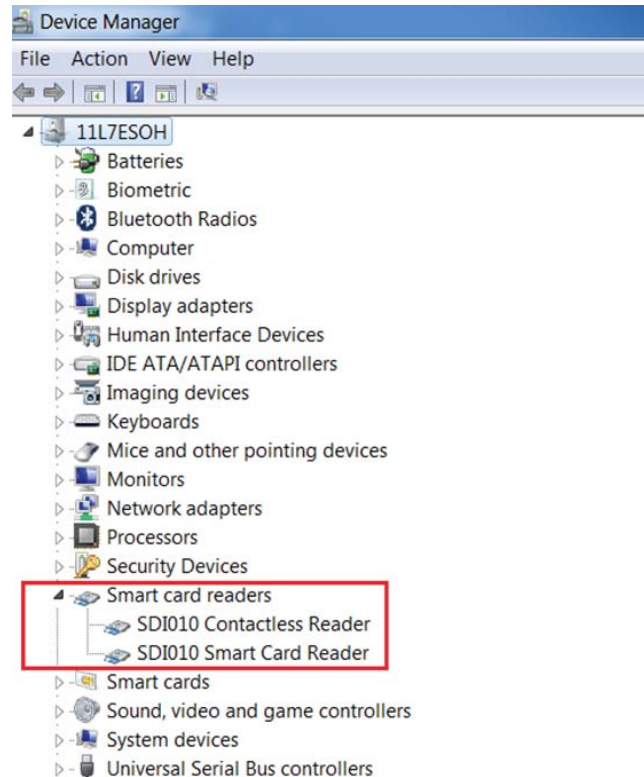
Encoding Contact and Contactless Via Ethernet on CardStudio Professional Edition Version 1.27

Eric Soh APAC Sales Engineer

In the past, it is not possible to encode contact or contactless card over Ethernet from any of our current printer models. But now, you can take full advantage of our latest CardStudio Pro Version 1.27 together with the latest driver version to encode contact and contactless card over Ethernet – any version lower than 1.27 is not supported.

Before beginning any encoding operations, please make sure the following prerequisites are in place:

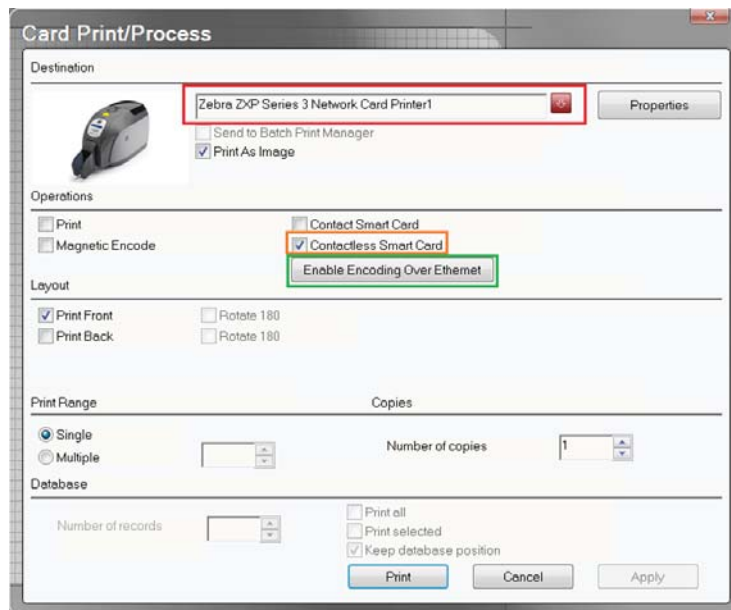
Prior connecting the printer via Ethernet, it always a best practice to check and ensure that the Identive Smart Card Reader drivers have been installed and recognized through USB interface in your PC/Laptop by opening the Device Manager.



Once this is done, proceed with the usual network printer setup connection.

Thereafter, open CardStudio and then go to File and select Card Print or Ctrl + P to choose the network printer currently installed in your PC/Laptop.

In the Card Print/Process window check the box next to Contact Smart Card or Contactless Smart Card.



Click Enable Encoding Over Ethernet and observe that Device Manager has recognized the Identive Smart Card Reader drivers.

You will only get the message below, if you have installed your Identive Smart Card Reader drivers successfully.



And now, you are all set to perform contactless smart card encoding via Ethernet.