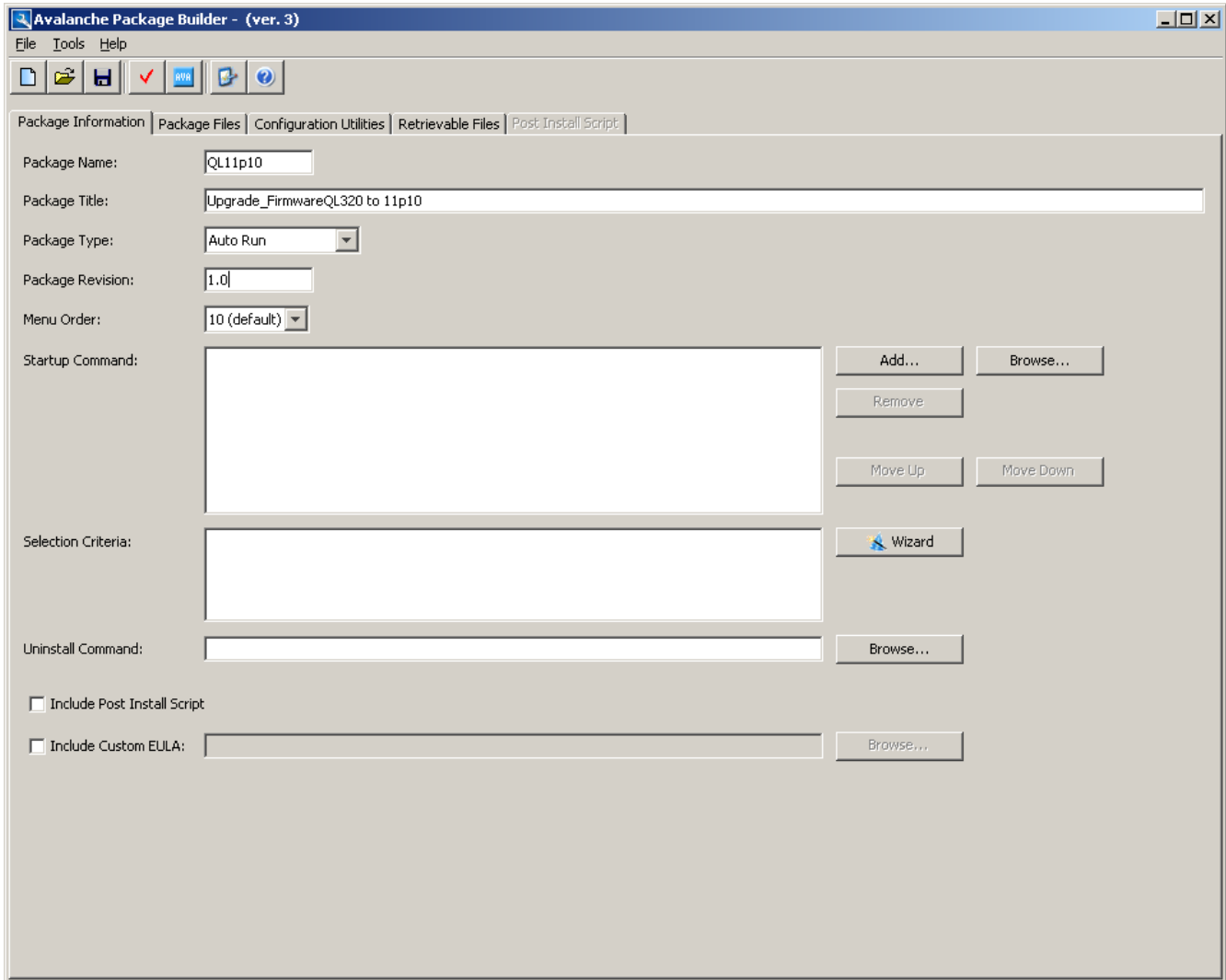


A common question regarding the mobile printers and Wavelink Avalanche Mobility center regards the ability to upgrade firmware using the utility. Wavelink Avalanche has a support site that references this question as well. The package being used for firmware upgrades should be of the type “AutoRun”

The following are screenshots of the Avalanche Package builder application  
The step below is showing the creation of a package name of QL11p10 Note that the package type is



set for Auto Run!!!

The screenshot below shows both a Criteria and the file (firmware file) to be sent to the printer to flash the firmware with version SHSTZ11p10. Note that file file is a “hex” file.

**Avalanche Package Builder - (ver. 3)**

File Tools Help

Package Information | Package Files | Configuration Utilities | Retrievable Files | Post-Install Script

Default File Properties

Install Drive: APPS

Flag:

Install Path:


Criteria: ModelName=QL320

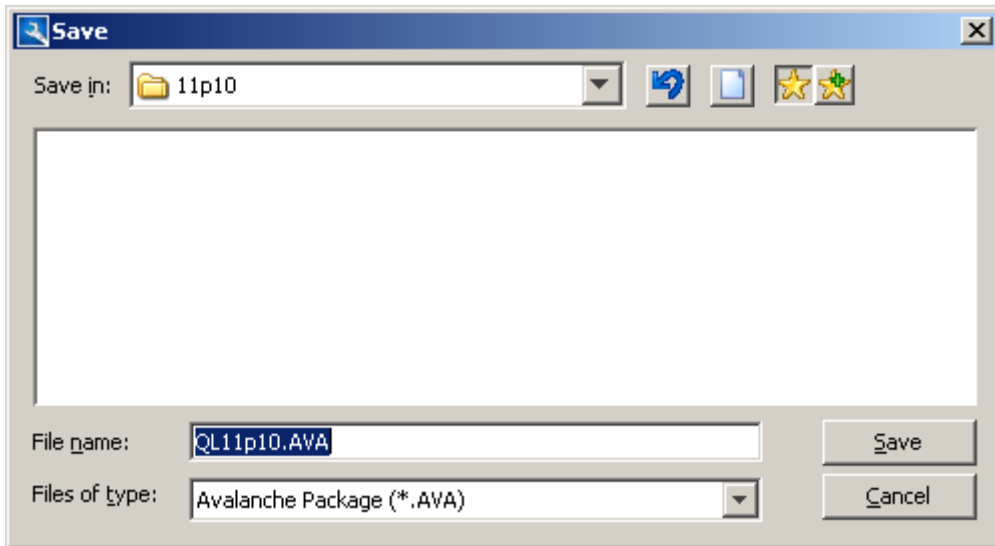
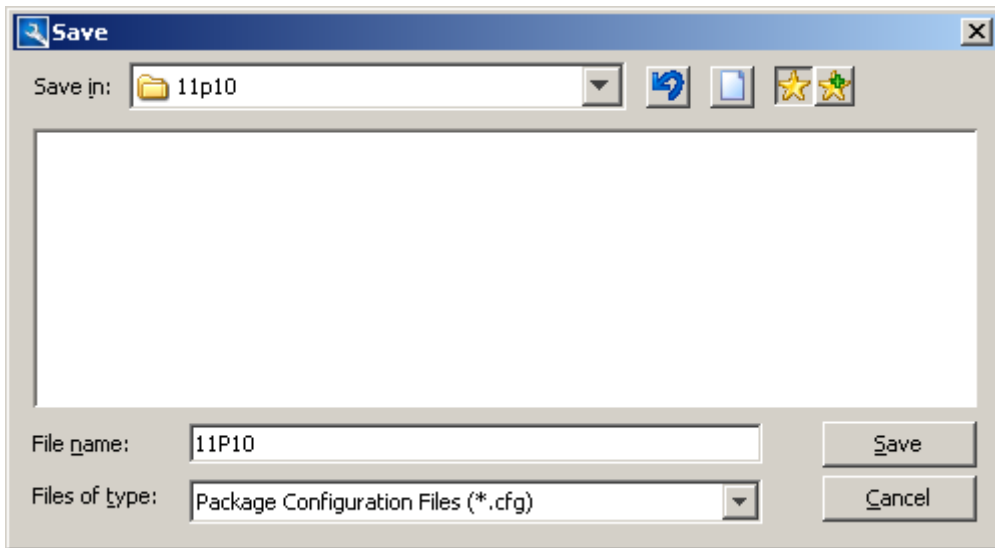
Auto Apply Defaults to New Files

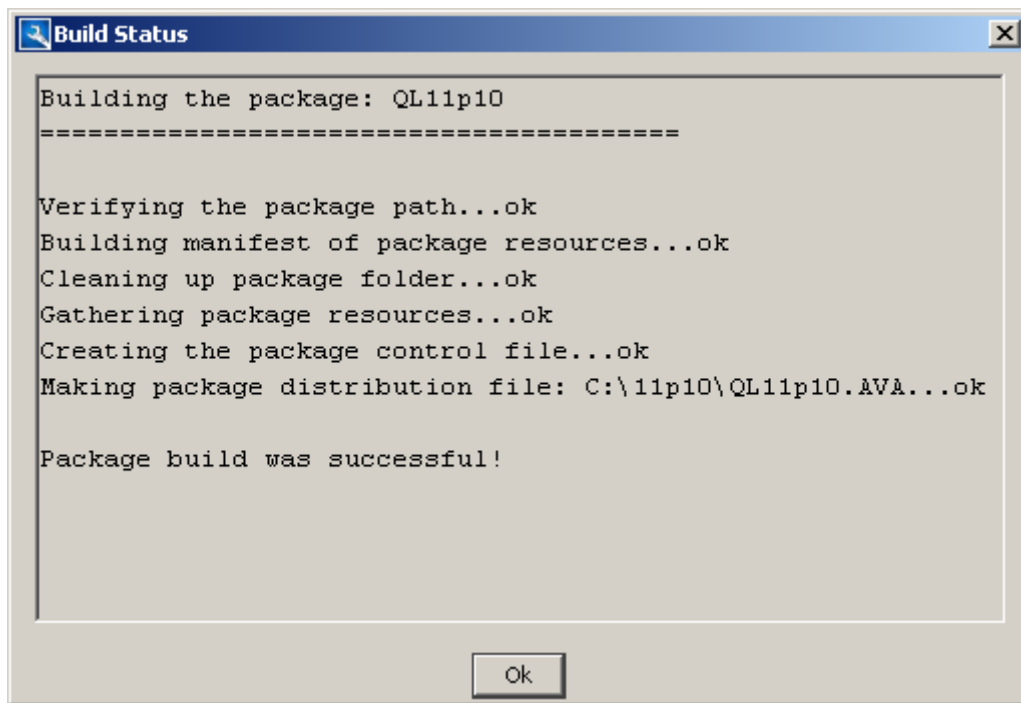
Source File	Install Drive	Install Path	File Name	Flag	Criteria
C:\11p10\SHSTZ11p10.hex	APPS		SHSTZ11p10.hex		

Package files count:

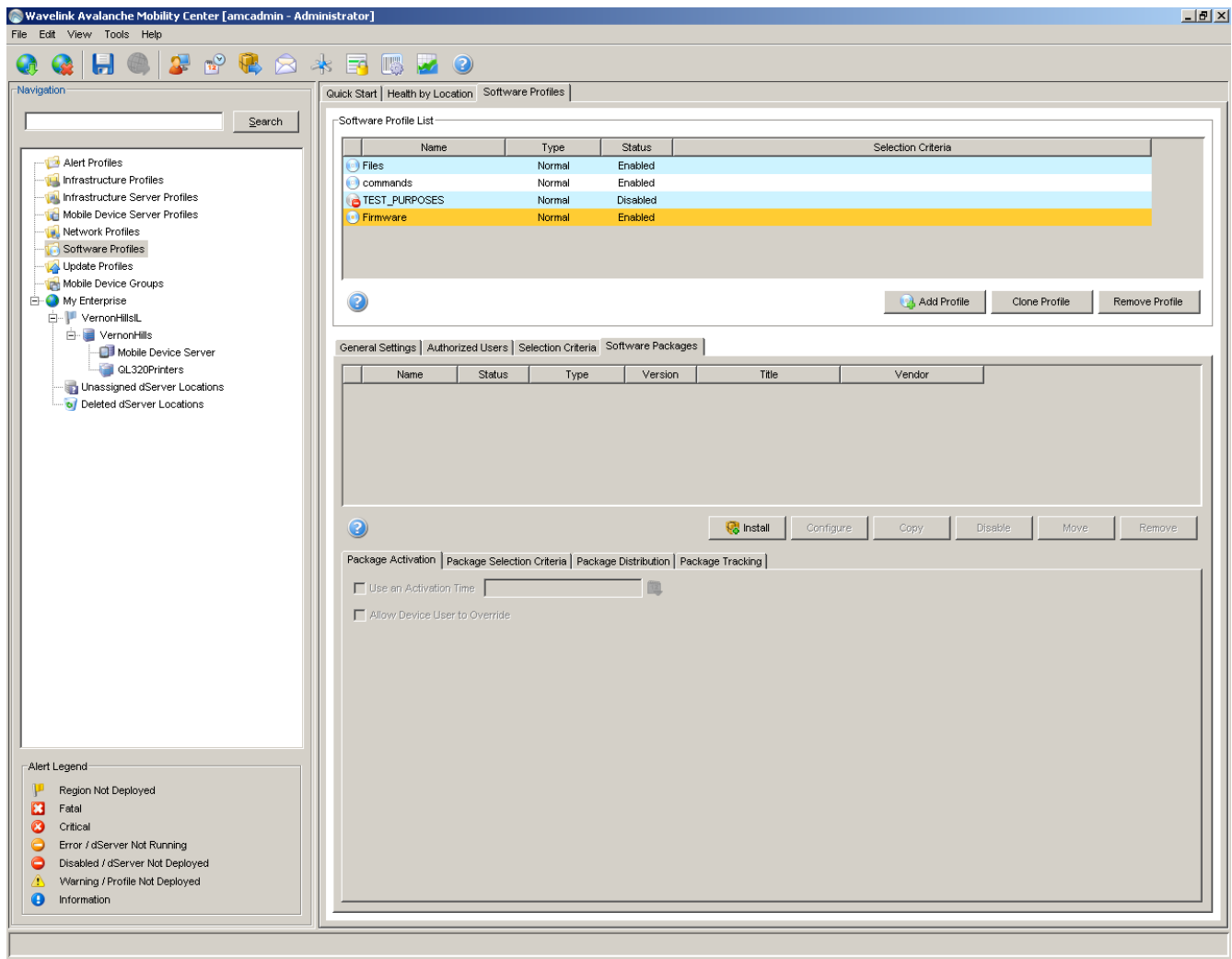
**Avalanche Package Builder**

 Do you want to save the changes to QL11p10?





The next screen shots are of the Wavelink Avalanche Mobility Center application. I have added a Software profile that I named Firmware.



I then need to install the package that I created earlier.



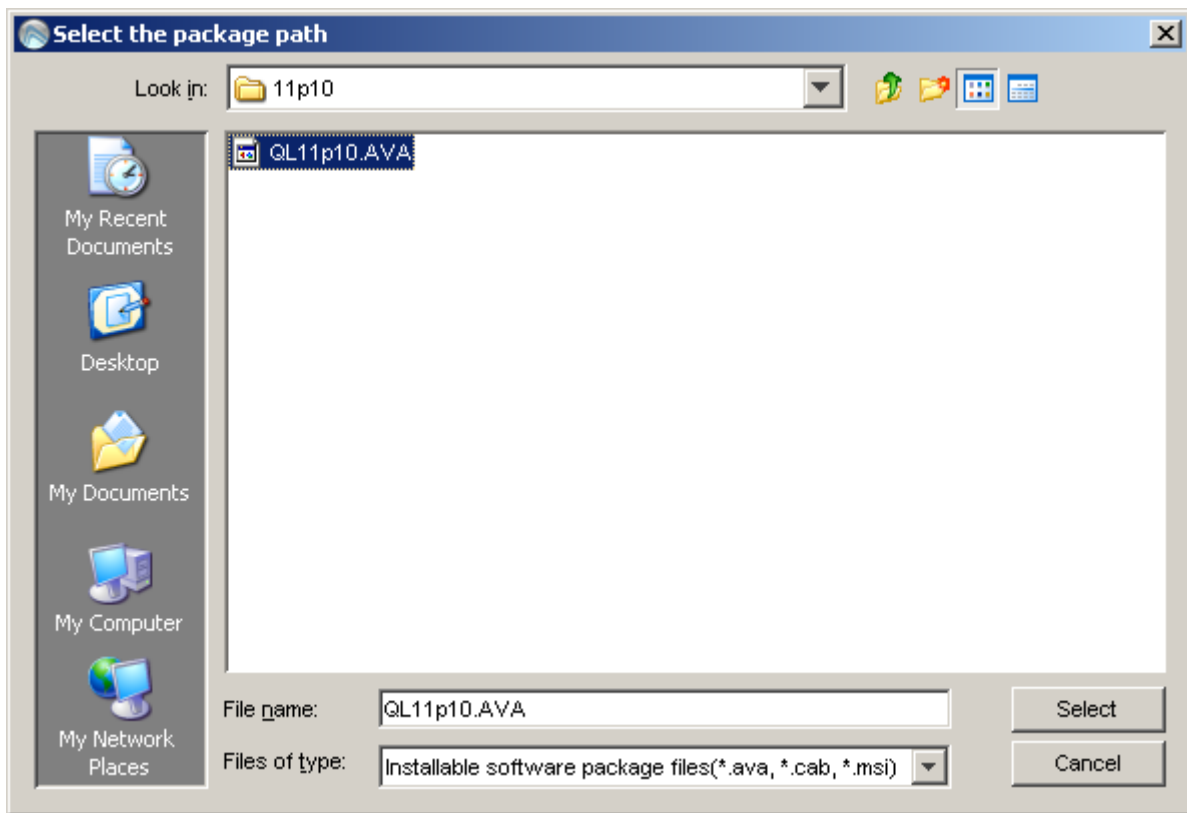
### Select the software package to install

The first step of the installation process is to select the software package you wish to install. Avalanche Mobility Center supports software package files that are built specifically for Avalanche clients, or CAB or MSI install packages. Avalanche MC software package files are generally recognized by their '.ava' extension.

You may either type the file system path to the file in the text field or click the '...' button to open a file browser.

 ...

< Back   Next >   Cancel





### Select the software package to install

The first step of the installation process is to select the software package you wish to install. Avalanche Mobility Center supports software package files that are built specifically for Avalanche clients, or CAB or MSI install packages. Avalanche MC software package files are generally recognized by their '.ava' extension.

You may either type the file system path to the file in the text field or click the '...' button to open a file browser.



< Back

Next >

Cancel



Install Software Package Wizard



Please read this license agreement carefully before proceeding.

**LICENSE AGREEMENT**

BY CLICKING ON THE "Yes" BUTTON AND USING THE WAVELINK SOFTWARE, YOU ARE CONSENTING TO BE BOUND BY THIS AGREEMENT. IF YOU DO NOT AGREE TO ALL OF THE TERMS OF THIS AGREEMENT, CLICK THE "No" BUTTON AND THE INSTALLATION PROCESS WILL STOP. DO NOT USE THE WAVELINK SOFTWARE IF YOU DO NOT WANT TO BE BOUND BY THIS AGREEMENT.

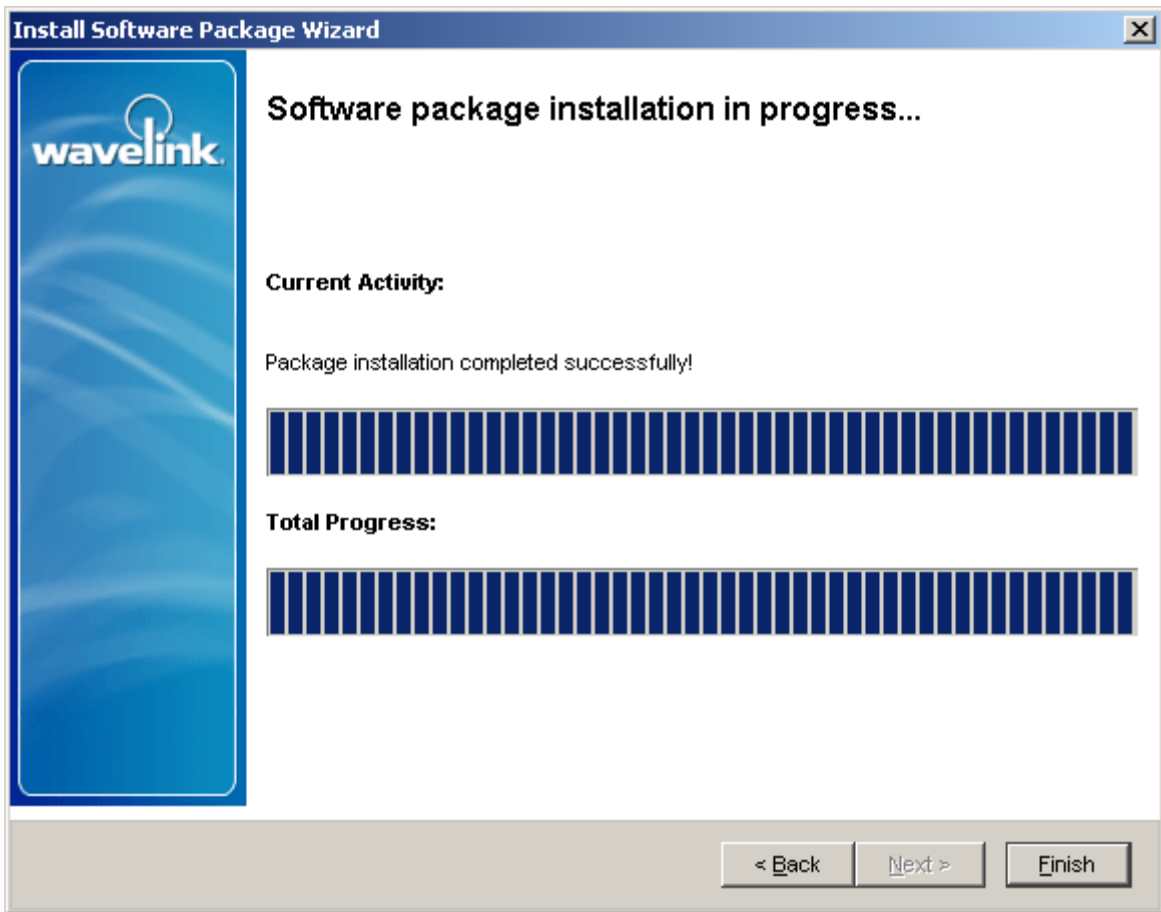
This Agreement has three parts. Part I applies if you have not purchased a license to the accompanying software (the "Software"). Part II applies if you have purchased a license to the Software. Part

YES, I agree     NO, I disagree

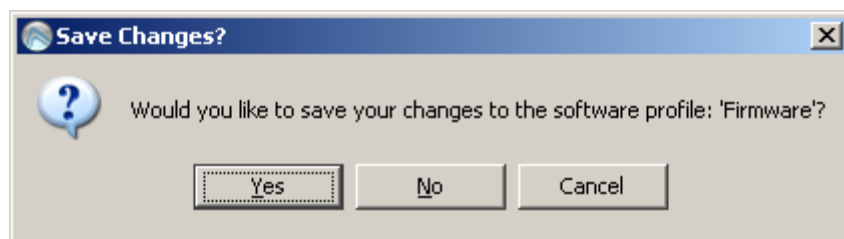
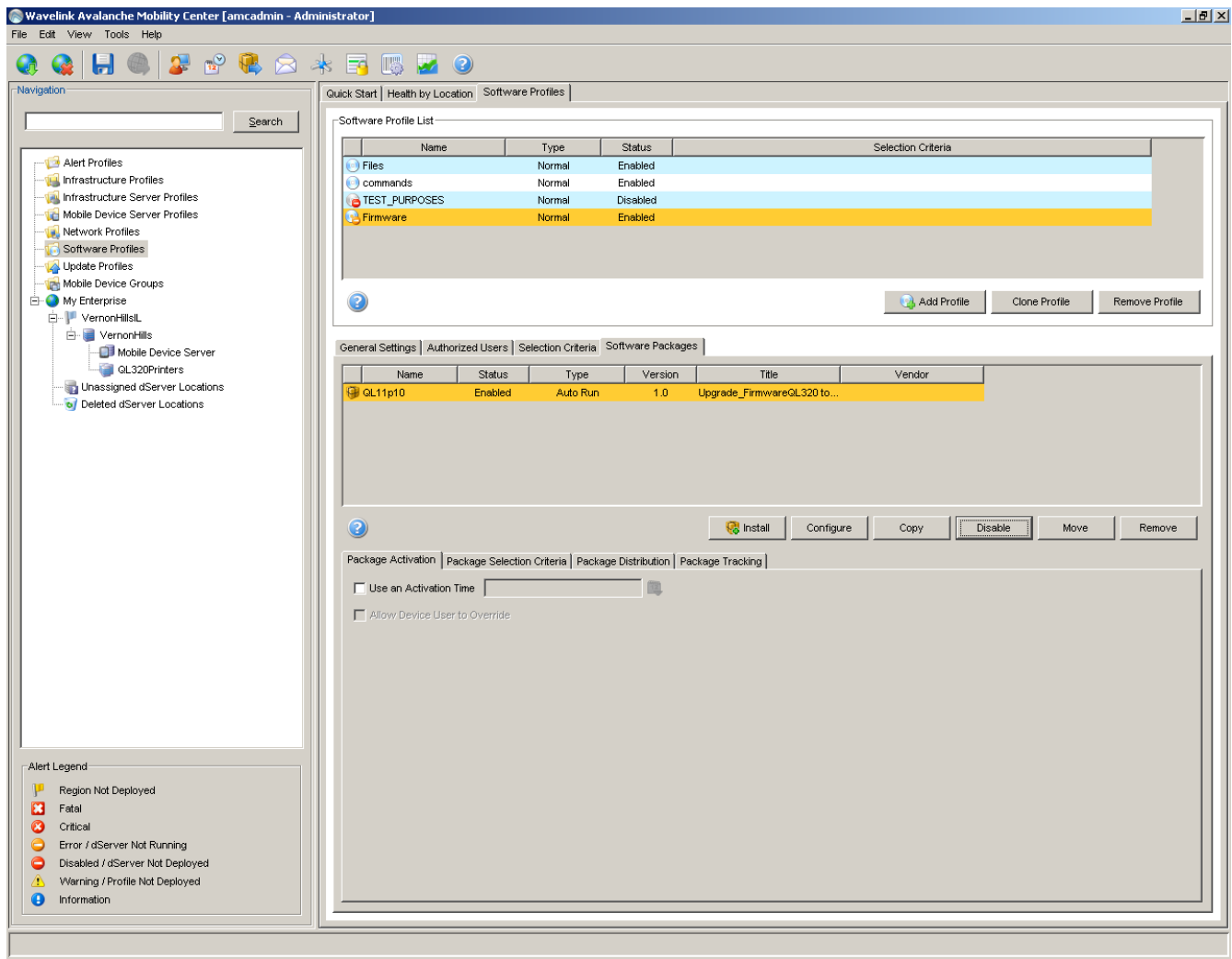
< Back

Next >

Cancel



I then need to enable the package.



I then click on the Save Icon.

The next section is where I add the Software profile to the Site (in my example QL320Printers)

Wavelink Avalanche Mobility Center [amcadmin - Administrator]

File Edit View Tools Help

Navigation

Search

- Alert Profiles
- Infrastructure Profiles
- Infrastructure Server Profiles
- Mobile Device Server Profiles
- Network Profiles
- Software Profiles
- Update Profiles
- Mobile Device Groups
- My Enterprise
  - VernonHillsL
    - VernonHills
      - Mobile Device Server
      - GL320Printers
    - Unassigned dServer Locations
    - Deleted dServer Locations

Alert Legend

- Region Not Deployed
- Fatal
- Critical
- Error / dServer Not Running
- Disabled / dServer Not Deployed
- Warning / Profile Not Deployed
- Information

Quick Start | Health by Location | Mobile Device Inventory | Infrastructure Inventory | Site Properties

General Settings

Name: GL320Printers

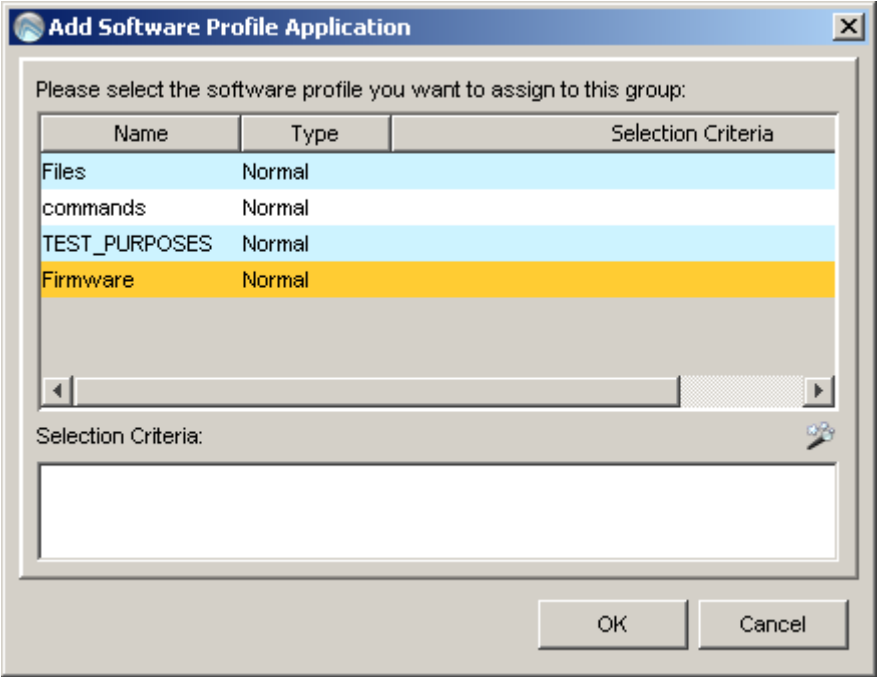
Selection Criteria

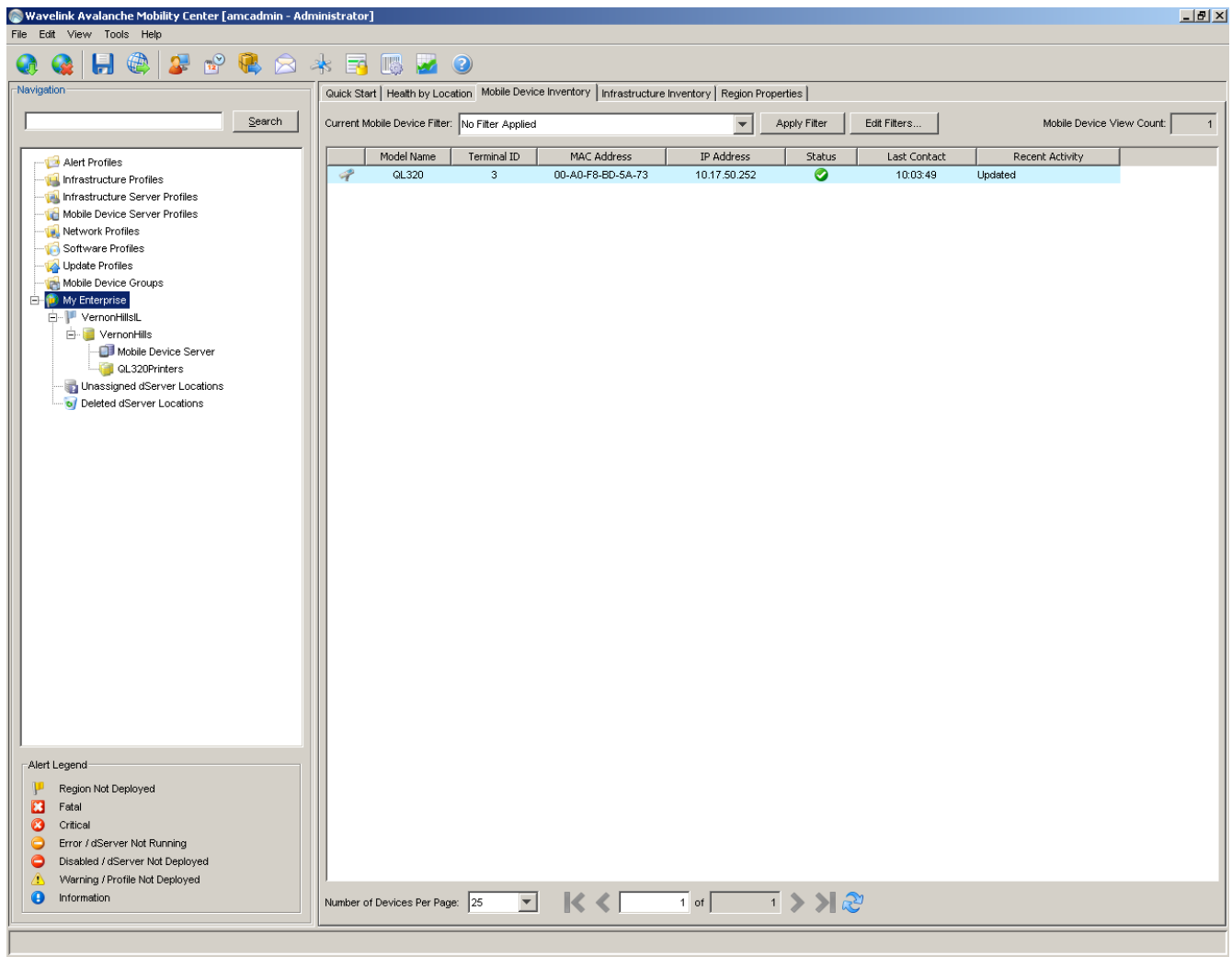
ModelName = GL320

Authorized Users | Network Profiles | Software Profiles | Update Profiles

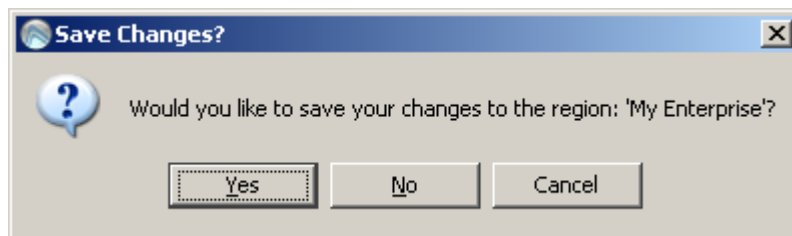
Name	Source	Selection Criteria
------	--------	--------------------

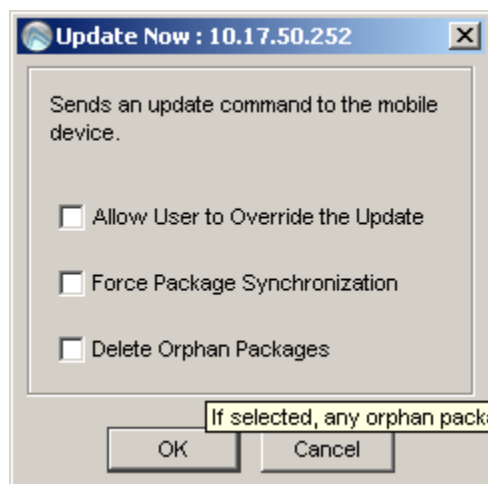
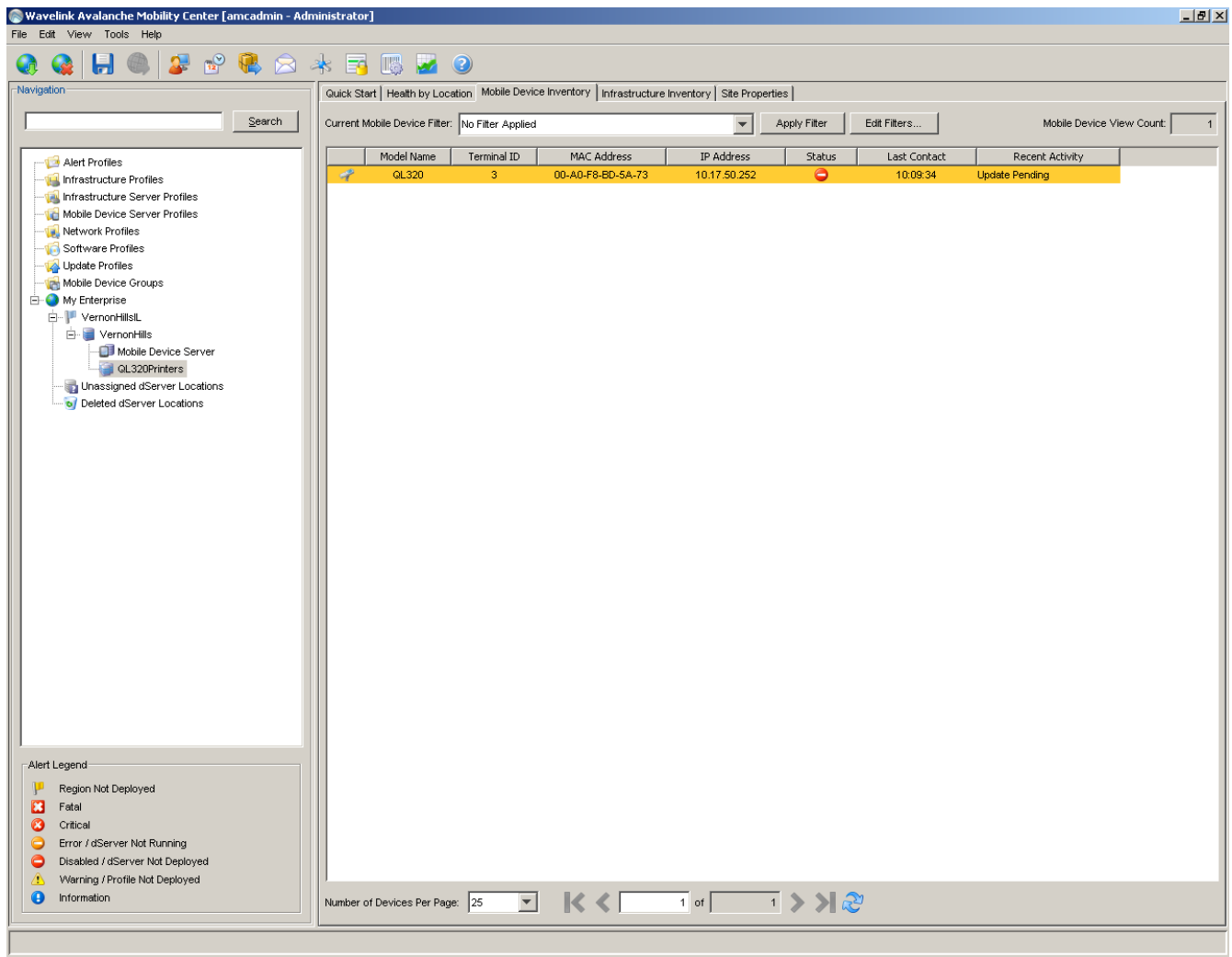
Move Up Move Down Add Remove





I then am going to deploy. I right click on My Enterprise and click on deploy now.





I then right click on the printer and click on update now.

It takes a few minutes to upgrade the firmware on the printer.