

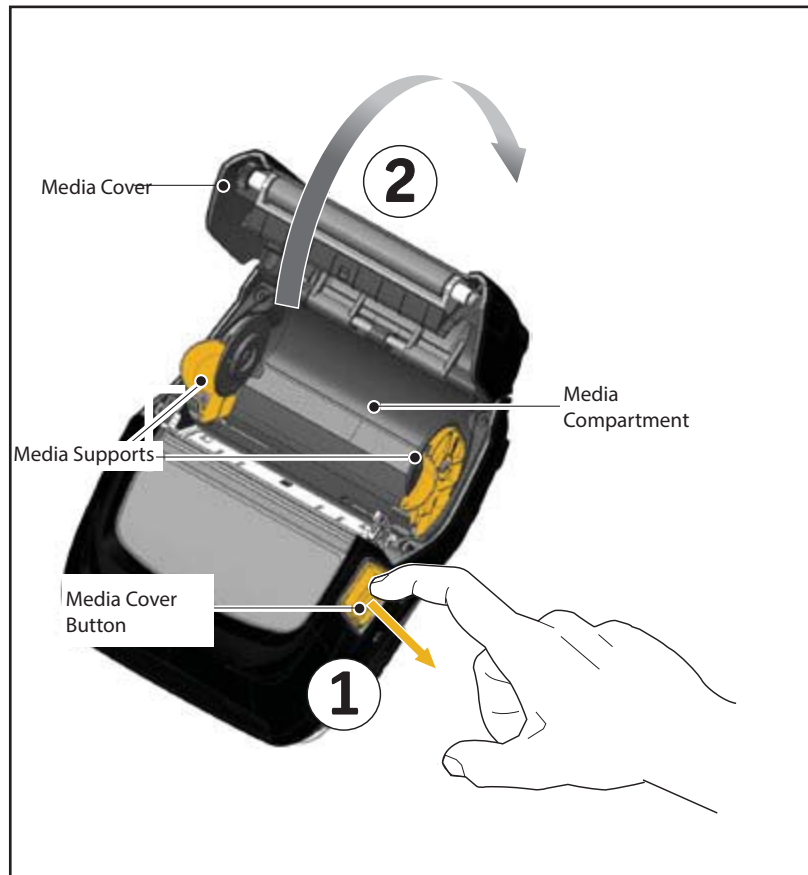
## Loading the Media in the ZQ500 Series Printers

The ZQ500 Series printers are designed to print either continuous (receipt) media or label stock.

### Loading Media Procedure

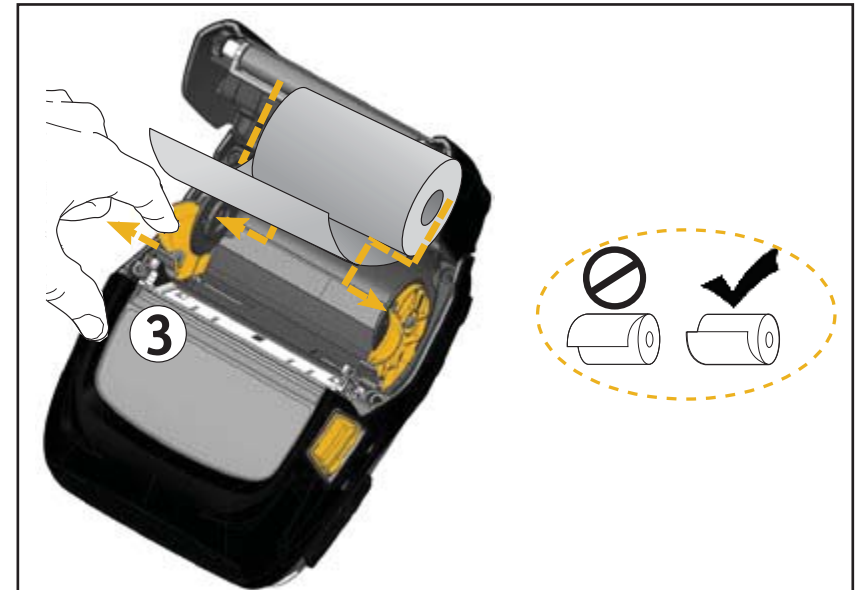
1. Open the printer (Refer to Figure 7).
  - Press the Media Cover Button on the side of the printer as shown in "1" below. The Media Cover will open automatically.
  - Rotate the Media Cover back completely as shown in "2", exposing the media compartment and adjustable media supports.

Figure 7: Opening the Printer



2. Pull the media supports apart as shown in Figure 8 below. Insert the roll of media (in the orientation shown) between the supports and let the supports secure the media in place. The supports will adjust themselves to the width of the media, and the media roll should be able to spin freely on the supports.

Figure 8: Loading Media



3. Close the Media Cover until it clicks into place and the media will advance as shown.

